

# HINIKER 4000 SHREDDER PARTS BOOK

<b>SECTION 1</b>	<b>PTO SHAFTS</b>
<b>SECTION 2</b>	<b>GEARBOX</b>
<b>SECTION 3</b>	<b>HITCH ASSEMBLIES</b>
<b>SECTION 4</b>	<b>BODY ASSEMBLIES</b>
<b>SECTION 5</b>	<b>COMPONENT PARTS</b>
<b>SECTION 6</b>	<b>OPTIONAL EQUIPMENT</b>
<b>SECTION 7</b>	<b>NUMERICAL INDEX</b>



# PARTS

FN 818-#223ps

It is the policy of Hiniker Company to constantly improve its products whenever it is practical to do so.

Hiniker Company must therefore reserve the right to redesign or change its equipment or component parts thereof without incurring the obligation to install or furnish such changes on equipment previously delivered.

## INSTRUCTIONS FOR ORDERING PARTS

1. The item numbers in the illustrations correspond to the same item numbers in the description list. An assembly having a part number can be ordered. All other parts must be ordered individually. The quantity in the "number required" column is the number of parts used in this area of the machine. The term "A/R" for number required indicates "as required" where the quantity may vary. Order all parts by their number and name. Do not use the item number.
2. All references to left and right, front and rear apply to the machine as viewed from the rear of direction of travel.
3. Always mention the identification number of the code and serial numbers found on the name plate of the unit on which the part is to be used. Much delay and confusion can be avoided when correct numbers are specified on parts order and correspondence.
4. Owners, order all parts through your local dealer.
5. Dealers must indicate how to ship; whether by truck, rail freight, express, or parcel post.
6. Collect phone calls will not be accepted.
7. Address all orders for parts as follows:

HINIKER COMPANY  
P.O. BOX 3407  
MANKATO, MN 56002-3407  
PH (507) 625-6621

## INSTRUCTIONS FOR RETURNING PART FOR ADJUSTMENT

1. To assure prompt handling of claims, your dealer or distributor should follow standard claim and forward claim within thirty (30) days, of any part failure or malfunction believed to be a warranty claim, to Hiniker Company claims department for processing.
2. No returned part will be accepted unless they are transportation prepaid and accompanied by the packing list copy of the returned goods authorization form, or the packing list copy of the warranty claim form.
3. Parts returned should have a tag attached with sender's name and address clearly printed.



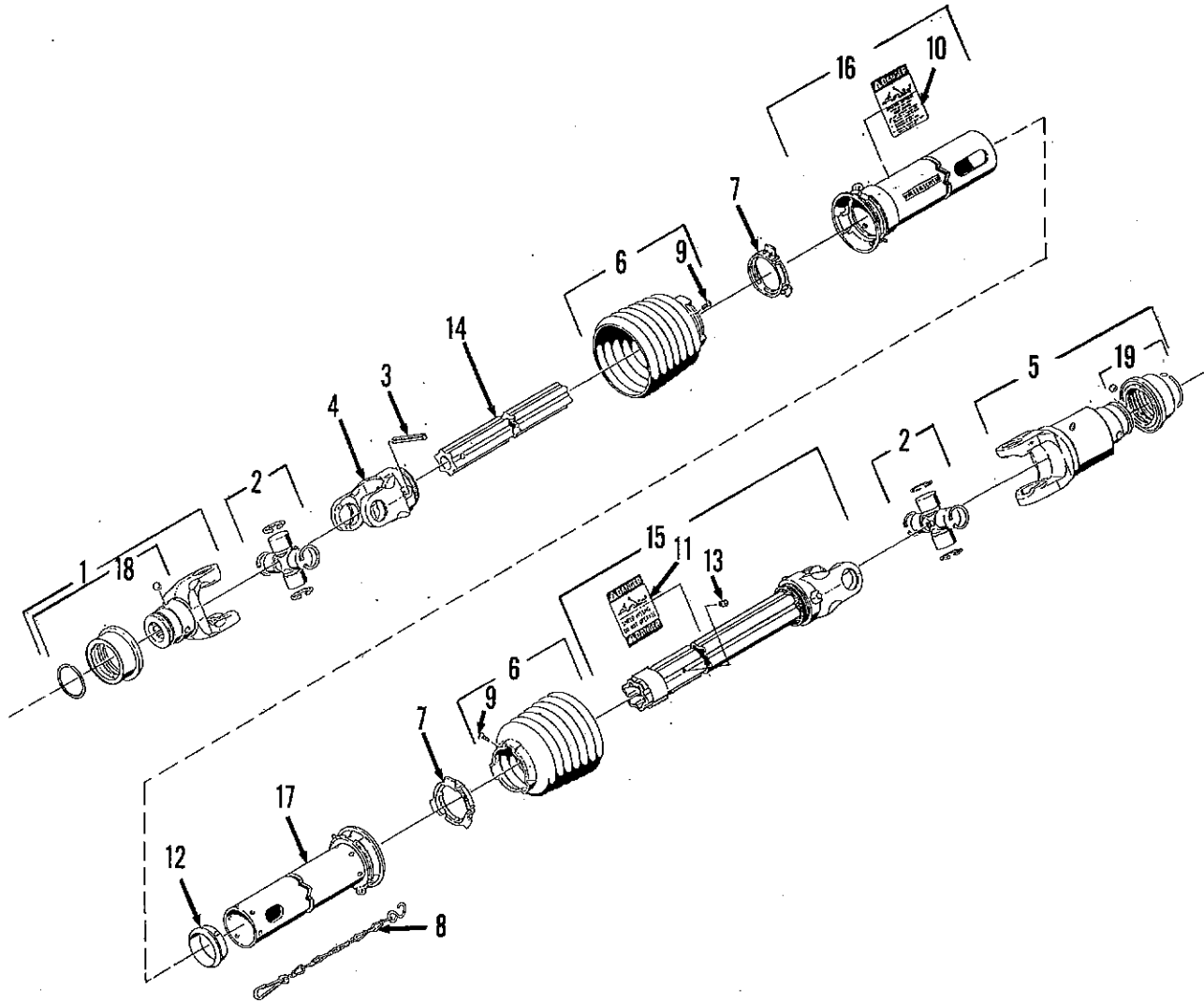
# SECTION 1

# PTO SHAFTS

<b>PAGE 2</b>	<b>3 PT. HITCH PTO 1 3/8 - 21</b>
<b>PAGE 3</b>	<b>3 PT. HITCH PTO 1 3/4 - 20</b>
<b>PAGE 4</b>	<b>540 RPM CV PTO</b>
<b>PAGE 5</b>	<b>1000 RPM CV PTO</b>
<b>PAGE 6</b>	<b>1 3/4 - 20 1000 RPM CV PTO</b>
<b>PAGE 7</b>	<b>OVERRUNNING CLUTCH, 540 RPM</b>
<b>PAGE 7</b>	<b>OVERRUNNING CLUTCH, 1000 RPM</b>

HINIKER 4000 SHREDDER

3 PT. HITCH PTO 1 3/8 - 21



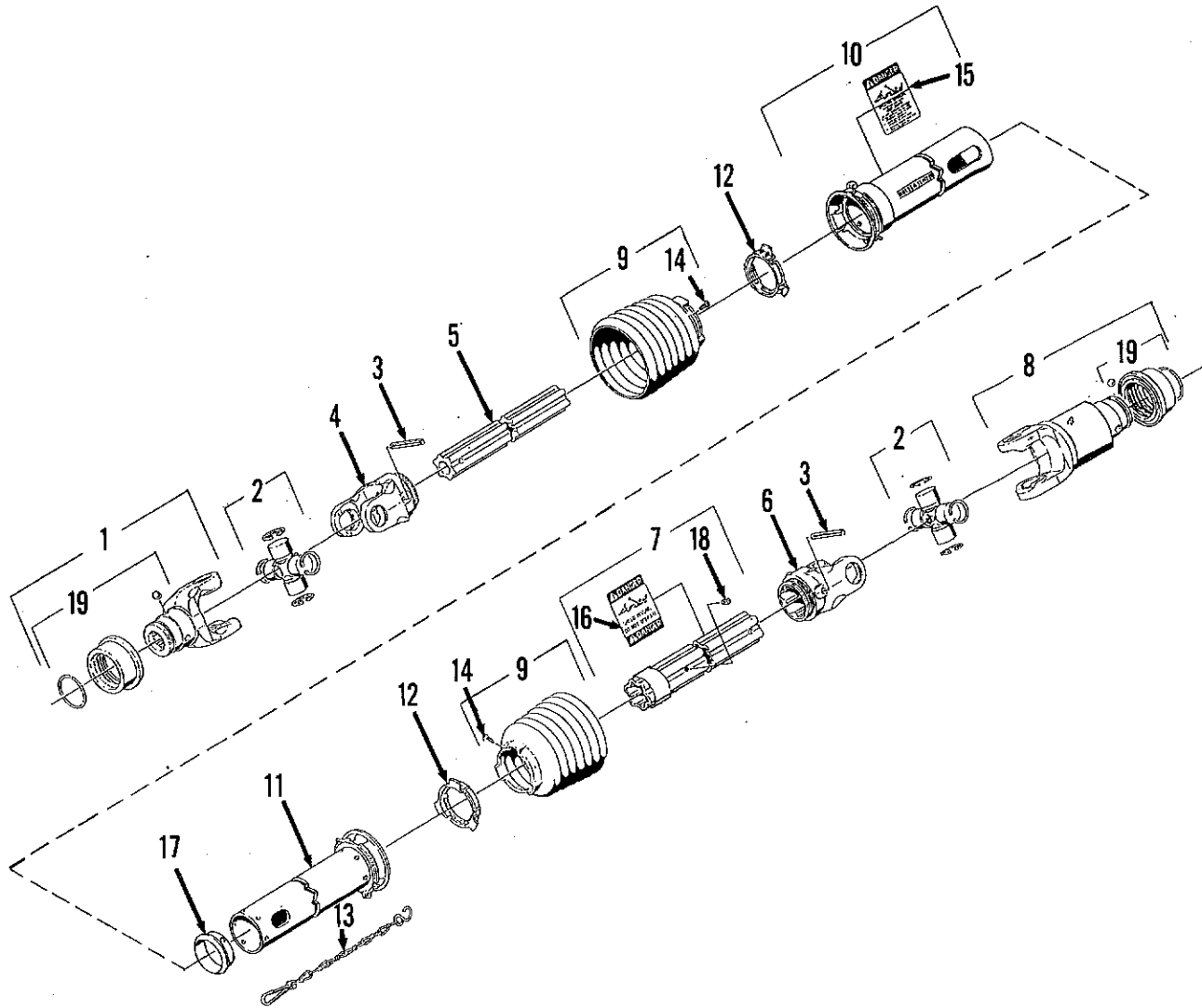
DWG. NO. 2509

REF. NO.	PART NUMBER	DESCRIPTION	QTY.	REF. NO.	PART NUMBER	DESCRIPTION	QTY.
1	520-03158	Yoke 1 3/8 - 21 Spline	1	11	520-03139	Inner Decal	1
2	520-03128	Cross & Bearing Kit	2	12	520-03136	Support Bearing	1
3	520-03124	Spring Pin 10 x 90	1	13	520-03140	Grease Zerk	1
4	520-03159	Inboard Yoke	1	14	520-03165	Inner Profile	2
5	520-03118	Overrunning Clutch (See Section 1 Page 7)	1	15	520-03162	Inboard Yoke Outer	1
6	520-03134	Shield Cone 7 Rib	2	16	520-03163	Outer Shield Tube	1
7	520-03129	Bearing Ring	2	17	520-03164	Inner Shield Tube	1
8	520-03137	Chain	1	18	520-03141	Collar Kit	0
9	520-03135	Screw	2	19	520-03142	Collar Kit	0
10	520-03138	Outer Decal	1		520-02157	Complete PTO Shaft Assembly	

# HINIKER 4000 SHREDDER

3 PT. HITCH PTO 1 3/4 - 20

SECTION 1

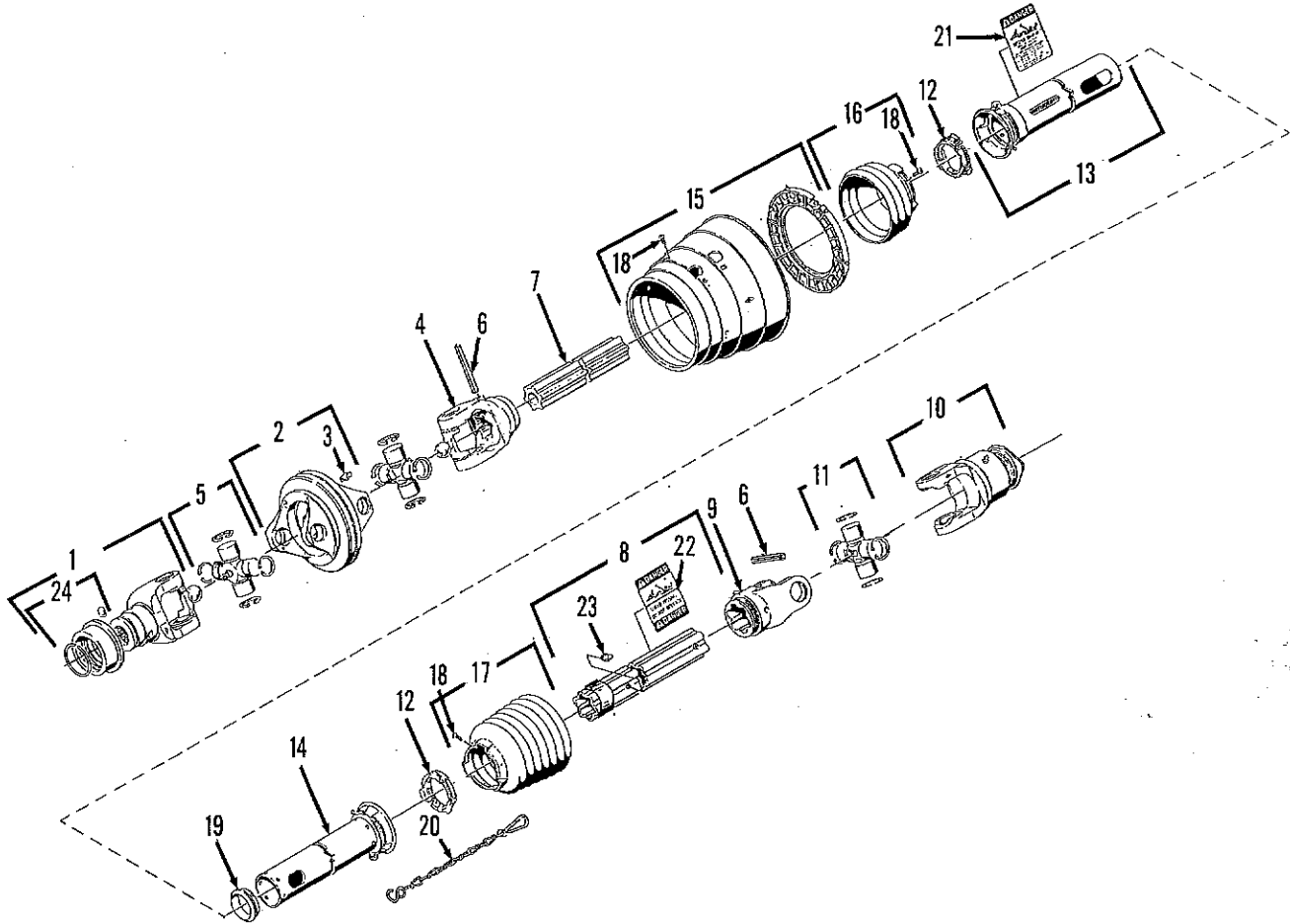


DWG. NO. 2515

REF. NO.	PART NUMBER	DESCRIPTION	QTY.	REF. NO.	PART NUMBER	DESCRIPTION	QTY.
1	520-03170	Yoke 1 3/4 - 20 Spline	1	11	520-03174	Inner Shield Tube	1
2	520-03128	Cross & Bearing Kit	2	12	520-03129	Bearing Ring	1
3	520-03124	Spring Pin	2	13	520-03137	Chain	1
4	520-03159	Inboard Yoke	1	14	520-03135	Screw	2
5	520-03171	Inner Profile	1	15	520-03138	Danger Decal	1
6	520-03127	Inboard Yoke	1	16	520-03139	Danger Decal	1
7	520-03172	Outer Profile	1	17	520-03136	Support Bearing	1
8	520-03118	Overrunning Clutch (See Section 1 Page 7)	1	18	520-03140	Grease Zerk	1
9	520-03134	Shield Cone	2	19	520-03142	Collar Kit	0
10	520-03173	Outer Shield Tube	1		520-02159	Complete 3 Pt. PTO Assembly	

HINIKER 4000 SHREDDER

540 RPM CV PTO



DWG. NO. 2508

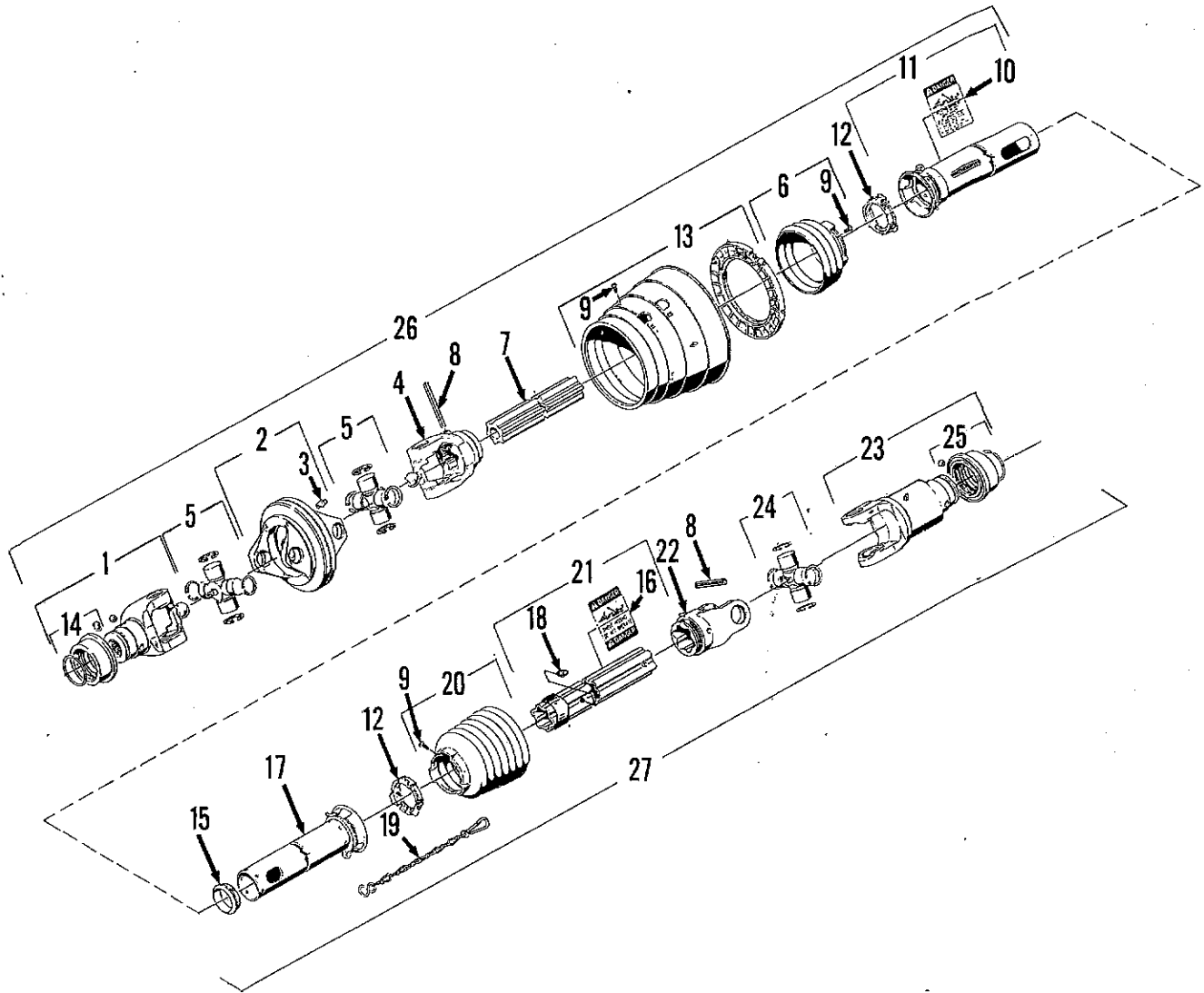
REF. NO.	PART NUMBER	DESCRIPTION	QTY.	REF. NO.	PART NUMBER	DESCRIPTION	QTY.
1	520-03152	Yoke 1 3/8 - 6 Spline	1	14	520-03131	Inner Shield Tube	1
2	520-03120	Double Yoke	1	15	520-03132	CV Cone & Bearing Assembly	1
3	520-03121	Grease Zerk	1	16	520-03133	Shield Cone, 3 Rib	1
4	520-03122	Inboard Yoke	1	17	520-03134	Shield Cone, 7 Rib	1
5	520-03123	Cross & Bearing Kit	2	18	520-03135	Screw	8
6	520-03124	Spring Pin	2	19	520-03136	Support Bearing	1
7	520-03125	Inner Profile	1	20	520-03137	Chain	1
8	520-03126	Profile 8 Sleeve Weld	1	21	520-03138	Danger Decal, Outer	1
9	520-03127	Inboard Yoke	1	22	520-03139	Danger Decal, Inner	1
10	520-03169	Overrunning Clutch 540 RPM (See Section 1 Page 7)	1	23	520-03140	Grease Zerk	1
11	520-03128	Cross & Bearing Kit	1	24	520-03141	Collar Kit	0
12	520-03154	Bearing Ring	2		520-03156	Quick Disconnect Kit	0
13	520-03155	Outer Shield Tube	1		520-02158	Complete 540 RPM CV PTO Assembly	



# HINIKER 4000 SHREDDER

1000 RPM CV PTO

SUN

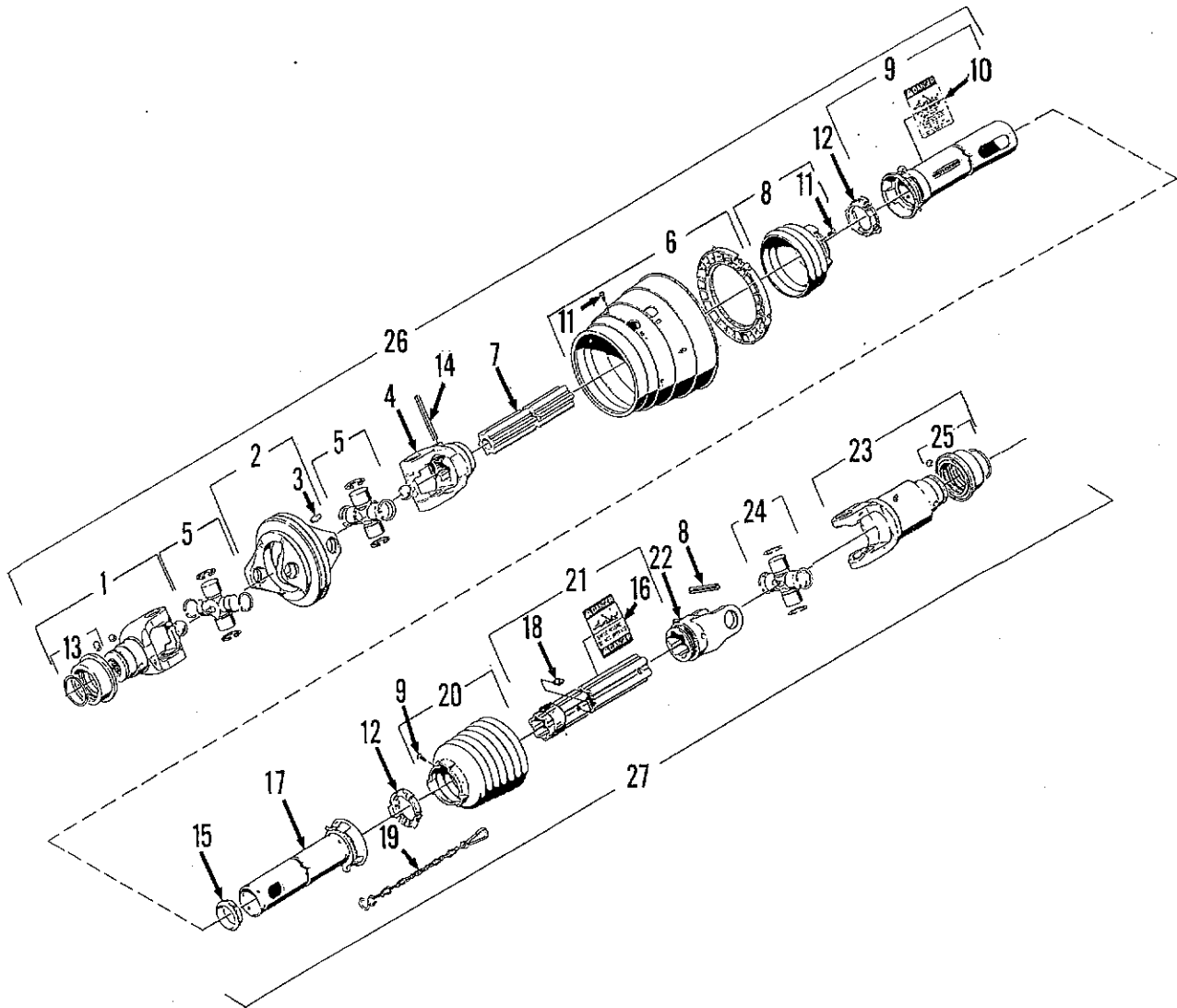


DWG. NO. 2518

REF. NO.	PART NUMBER	DESCRIPTION	QTY.	REF. NO.	PART NUMBER	DESCRIPTION	QTY.
1	520-03119	Yoke, 1 3/8 - 21 Spline	1	15	520-03136	Support Bearing	1
2	520-03120	Double Yoke	1	16	520-03139	Inner Decal	1
3	520-03121	Grease Zerk	1	17	520-03131	Inner Shield	1
4	520-03122	Inboard Yoke	1	18	520-03140	Grease Zerk	1
5	520-03123	Cross & Bearing Kit	2	19	520-03137	Chain	1
6	520-03133	Shield Cone 3 Rib	1	20	520-03134	Shield Cone, 7 Rib	1
7	520-03125	Inner Profile	1	21	520-03126	Profile & Sleeve Weld	1
8	520-03124	Spring Pin	1	22	520-03127	Inboard Yoke	1
9	520-03135	Screw	7	23	520-03118	Overrunning Clutch	1
10	520-03138	Outer Decal	1	24	520-03128	Cross & Bearing Kit	1
11	520-03130	Outer Shield	1	25	520-03142	Collar Kit	0
12	520-03129	Bearing Flng	1	26	520-03115	Complete Front Half, 1 3/8 - 21 CV Assembly	
13	520-03132	CV Cone & Bearing Assembly	1	27	520-03116	Complete Rear Half, 1 3/4 - 20 CV Assembly	
14	520-03141	Collar Kit	0		520-02156	Complete CV PTO Shaft Assembly	

# HINIKER 4000 SHREDDER

1 3/4 - 20 1000 RPM CV PTO

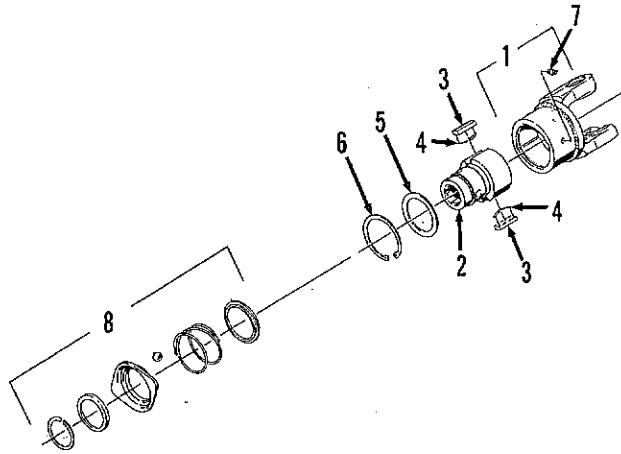


DWG. NO. 2671

REF. NO.	PART NUMBER	DESCRIPTION	QTY.	REF. NO.	PART NUMBER	DESCRIPTION	QTY.
1	520-03143	Yoke 1 3/4 - 20 Spline	1	15	520-03136	Support Bearing	1
2	520-03120	Double Yoke	1	16	520-03139	Inner Decal	1
3	520-03121	Grease Zerk	1	17	520-03177	Inner Shield	1
4	520-03122	Inboard Yoke	1	18	520-03140	Grease Zerk	1
5	520-03123	Cross & Bearing Kit	2	19	520-03137	Safety Chain	1
6	520-03132	CV Cone & Bearing Kit	1	20	520-03134	Shield Cone 7 Rib	1
7	520-03144	Inner Profile	1	21	520-03176	Profile & Sleeve Weld	1
8	520-03133	Shield Cone, 3 Rib	2	22	520-03127	Inboard Yoke	1
9	520-03145	Outer Shield	1	23	520-03118	Overrunning Clutch	1
10	520-03138	Outer Decal	1	24	520-03128	Cross & Bearing Kit	1
11	520-03135	Screw	8	25	520-03142	Collar Kit	1
12	520-03129	Bearing Ring	3	26	520-03117	Complete Front Half, 1 3/4 - 20 CV Assembly	
13	520-03142	Collar Kit	1	27	520-03175	Complete Rear Half 1 3/4 - 20 CV Assembly	
14	520-03124	Spring Pin	2		520-02160	Complete 1 3/4 PTO Shaft Assembly 1000 RPM	

# HINIKER 4000 SHREDDER

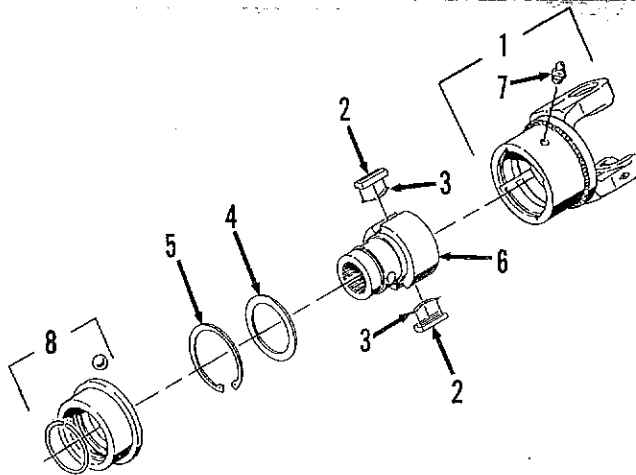
## OVERRUNNING CLUTCH 540 RPM



DWG. NO. 2511

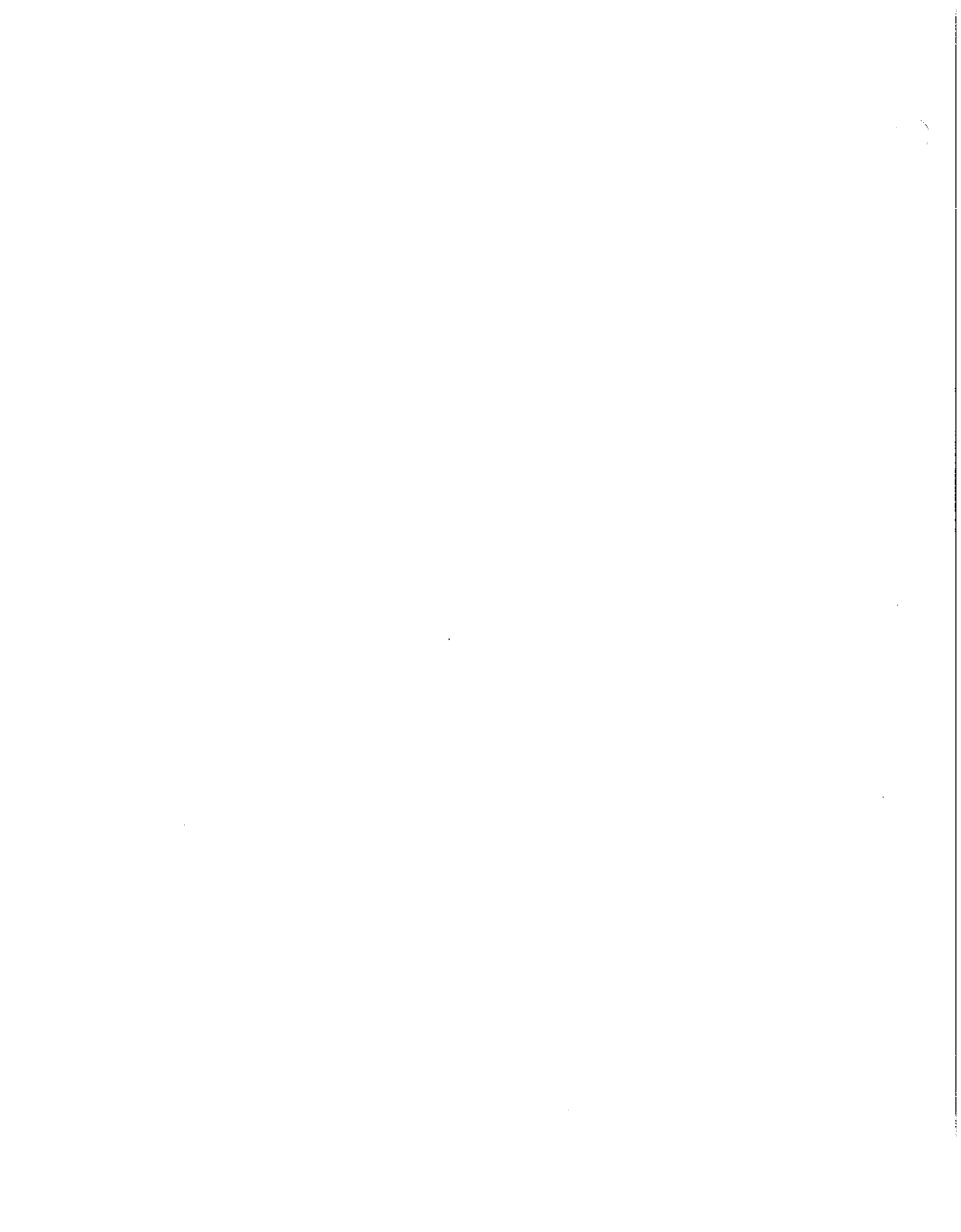
REF. NO.	PART NUMBER	DESCRIPTION	QTY.	REF. NO.	PART NUMBER	DESCRIPTION	QTY.
1	520-03146	Clutch Housing	1	6	520-03150	Retaining Ring	1
2	520-03168	Hub 1 3/8 - 16 SPL Q.D.	1	7	520-03121	Grease Zerk	1
3	520-03147	Key	2	8	520-03167	Q.D. Flange Kit	1
4	520-03148	Leaf Spring	2		520-03169	Complete Clutch Assembly	
5	520-03166	Supporting Ring	1				

## OVERRUNNING CLUTCH 1000 RPM



DWG. NO. 2512

REF. NO.	PART NUMBER	DESCRIPTION	QTY.	REF. NO.	PART NUMBER	DESCRIPTION	QTY.
1	520-03146	Clutch Housing	1	6	520-03151	Hub, 1 3/4 - 20 Spline	1
2	520-03147	Key	2	7	520-03121	Grease Zerk	1
3	520-03148	Leaf Spring	2	8	520-03142	Collar Kit	1
4	520-03149	Supporting Ring	2		520-03118	Complete Overrunning Clutch Assembly	
5	520-03150	Retaining Ring	1				

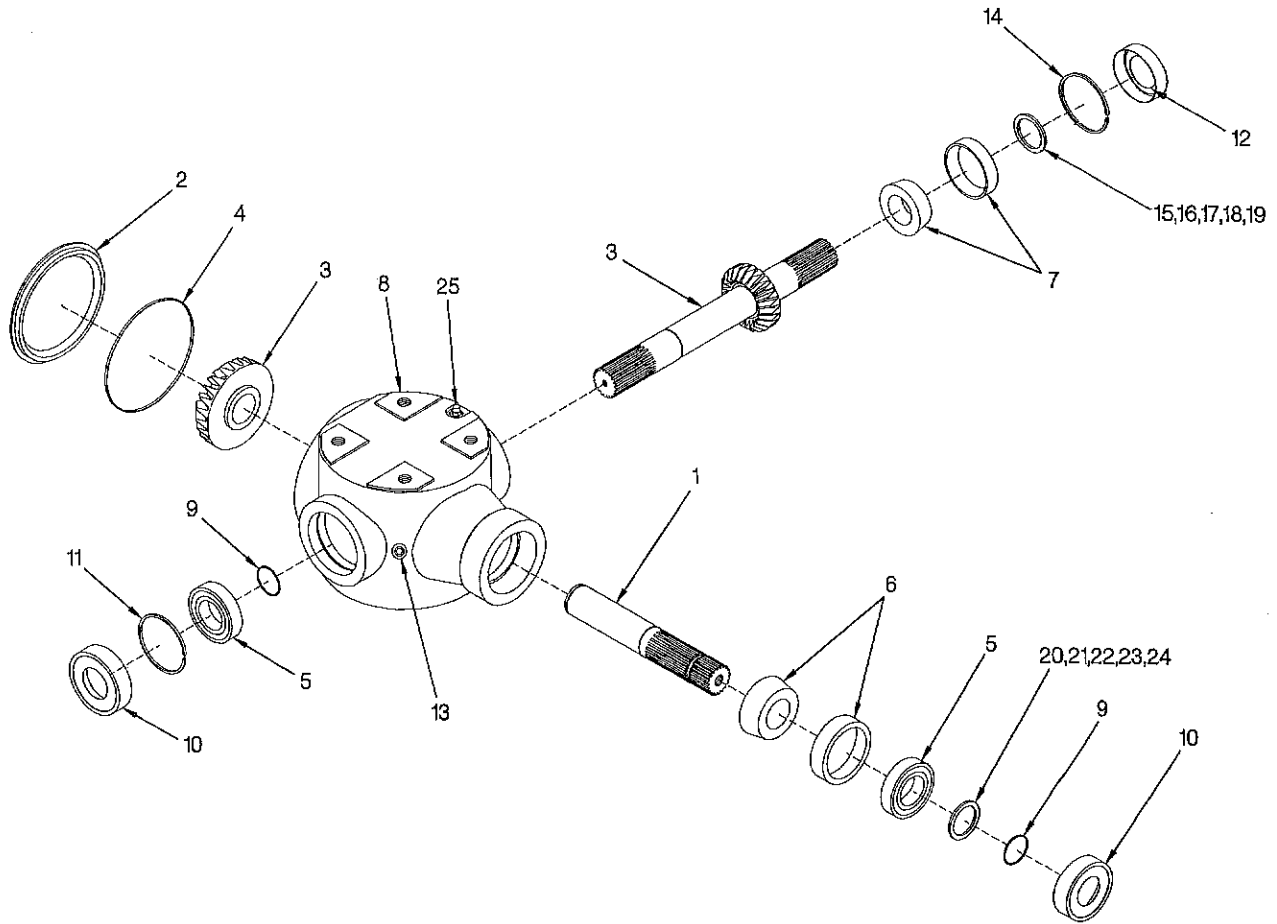


# SECTION 2 GEARBOXES

PAGE 2	GEARBOX ASSEMBLY, 540 RPM
PAGE 3	GEARBOX ASSEMBLY, 1000 RPM

# HINIKER 4000 SHREDDER

## GEARBOX ASSEMBLY, 540 RPM



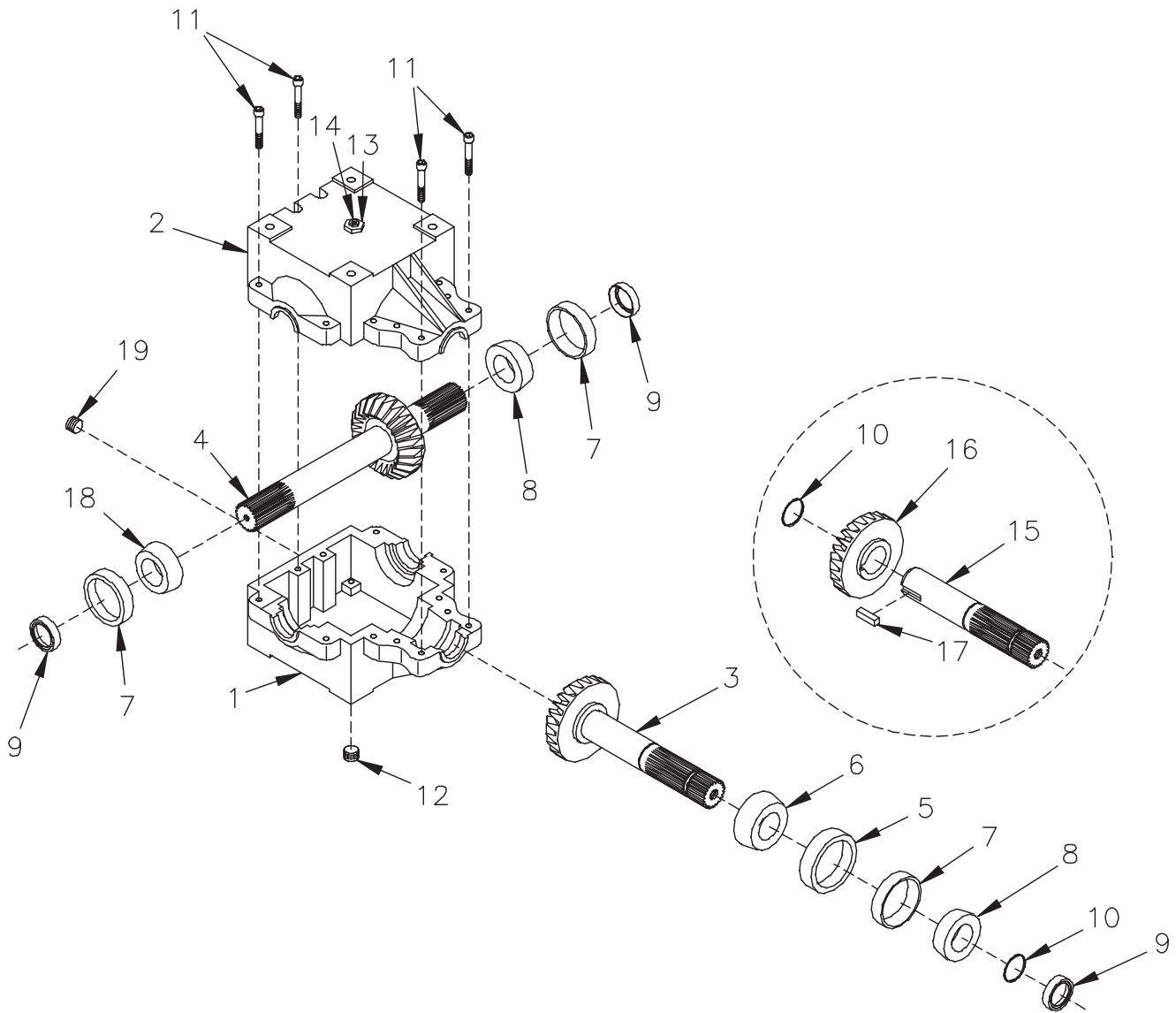
DWG. NO. 2508

REF. NO.	PART NUMBER	DESCRIPTION	QTY.	REF. NO.	PART NUMBER	DESCRIPTION	QTY.
1	501-06485	Shaft	1	14	702-06053	Snap Ring	1
2	400-17208	Cover	1	15	652-28025	Ring, 0.6 MM	A/R
3	517-10158	Bevel Gear	1	16	652-28026	Ring, 0.8 MM	A/R
4	650-06058	Oil Seal	1	17	652-28027	Ring, 1.0 MM	A/R
5	600-02083	Ball Bearings	2	18	652-28028	Ring, 0.3 MM	A/R
6	601-02076	Tapered Roller Bearings	1	19	652-28024	Ring, 0.4 MM	A/R
7	601-02077	Tapered Roller Bearings	1	20	652-28020	Ring, 0.6 MM	A/R
8	400-17207	Housings	1	21	652-28021	Ring, 0.8 MM	A/R
9	702-06052	Snap Ring	2	22	652-28022	Ring, 1.0 MM	A/R
10	650-06059	Oil Seal	2	23	652-28023	Ring, 0.3 MM	A/R
11	702-06054	Snap Ring	1	24	652-28029	Ring, 0.4 MM	A/R
12	650-06057	Oil Seal	1	25	203-51174	Breather Plug (BSPT)	1
13	203-51173	Oil Plug (BSPT)	2		517-00207	Complete Gearbox Assembly	

# HINIKER 4000 SHREDDER

## GEARBOX ASSEMBLY, 1000 RPM

SEC  
2



51700216 1000 RPM Gearbox Assembly

DWG. NO. 2505C

REF. NO.	PART NUMBER	DESCRIPTION	QTY.	REF. NO.	PART NUMBER	DESCRIPTION	QTY.
1	400-17205	Casting (Tapped Holes)	1	11	950-011-032	Socket Head Cap Screw 3/8-16 x 2 1/4	12
2	400-17206	Casting (Thru Holes)	1	12	203-51156	Plug, 1/2 NPT Hex Socket Head	1
3	50106488	Pinion Shaft/Gear (Replaces 15, 16, 17, 10) S/N-103	1	13	203-51074	Bushing, 1/2 NPT - 1/8 NPT	1
4	50106489	Cross Shaft/Gear	1	14	203-50308	Pressure Relief	1
5	601-05002	Bearing Cup (Large) #3720	1	15	501-06483	Pinion Shaft	1
6	601-02075	Bearing Cone (Large) #3782	1	16	517-11099	Gear 1:1 Ratio	1
7	601-05001	Bearing Cup (Small) #25520	3	17	702-53219	3/8 Square x 1.45 Long Keys	1
8	601-03003	Bearing Cone (Small) #25581	2	18	601-02001	Bearing Cone 625580	1
9	650-06056	Seal (1 3/4 Shaft)	3	19	79201412	Plain Plug 1/4 NPT	1
10	702-05093	Retaining Ring (1 3/4 Shaft)	A/R				



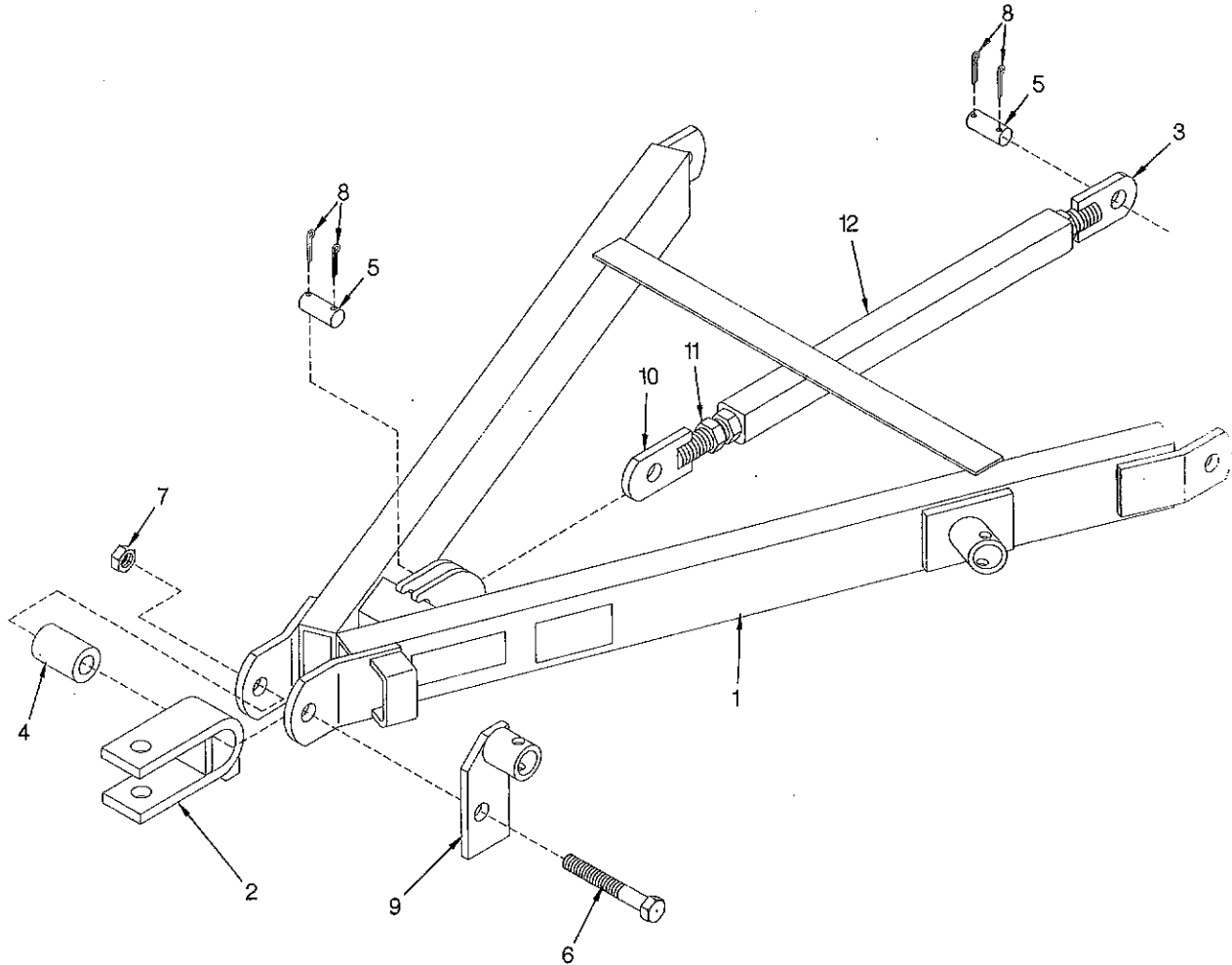


# SECTION 3 HITCH ASSEMBLIES

PAGE 2	TRAIL HITCH ASSEMBLY
PAGE 3	3 - POINT HITCH ASSEMBLY

# HINIKER 4000 SHREDDER

## TRAIL HITCH ASSEMBLY

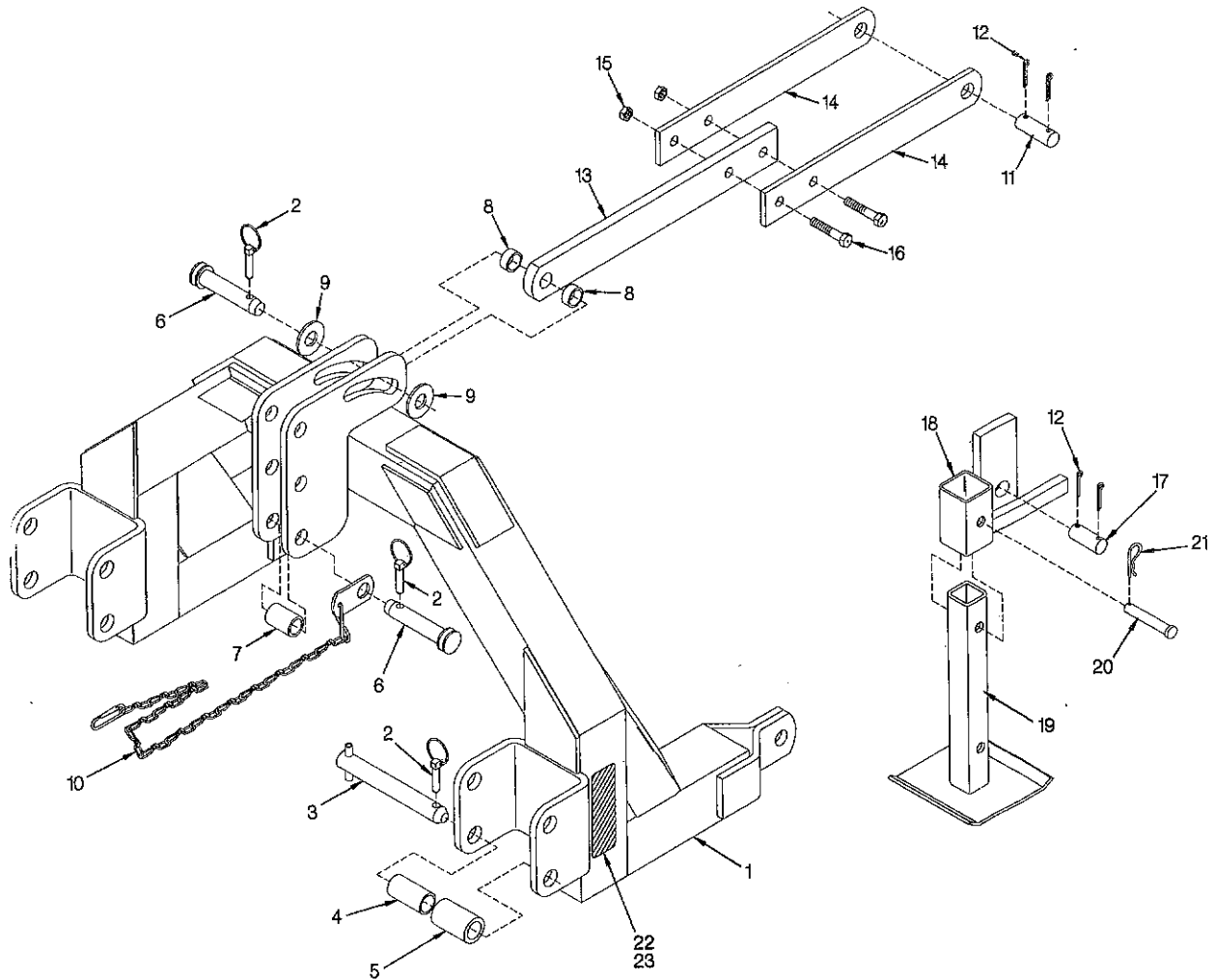


DWG. NO. 2493

REF. NO.	PART NUMBER	DESCRIPTION	QTY.	REF. NO.	PART NUMBER	DESCRIPTION	QTY.
1	79200996	Trail Hitch Assembly	1	8	035-42065	1/4 x 1 3/4 Cotter Pin	4
2	79200945	Clevis Weld	1	9	79201079	Jack Mount Weld (Not Required On Hitches With Jack Mounts)	1
3	79201097	LH Turnbuckle Rod Weld	1	10	79201098	RH Turnbuckle Rod Weld	1
4	79200942	Hitch Spacer	1	11	951-001-022	1 1/4 - 7 UNC Hex Nut	1
5	79200993	Hitch Pin	2	12	79200869	Turnbuckle Weld	1
6	950-001-215	1" - 8 UNC 5 1/2 Hex Hd Cap Screw Gr. 8	1		79200872	Turnbuckle Assembly (Includes Items 3, 10, 11 & 12)	
7	034-05175	1" - 8 UNC Lock Nut Stover	1				

# HINIKER 4000 SHREDDER

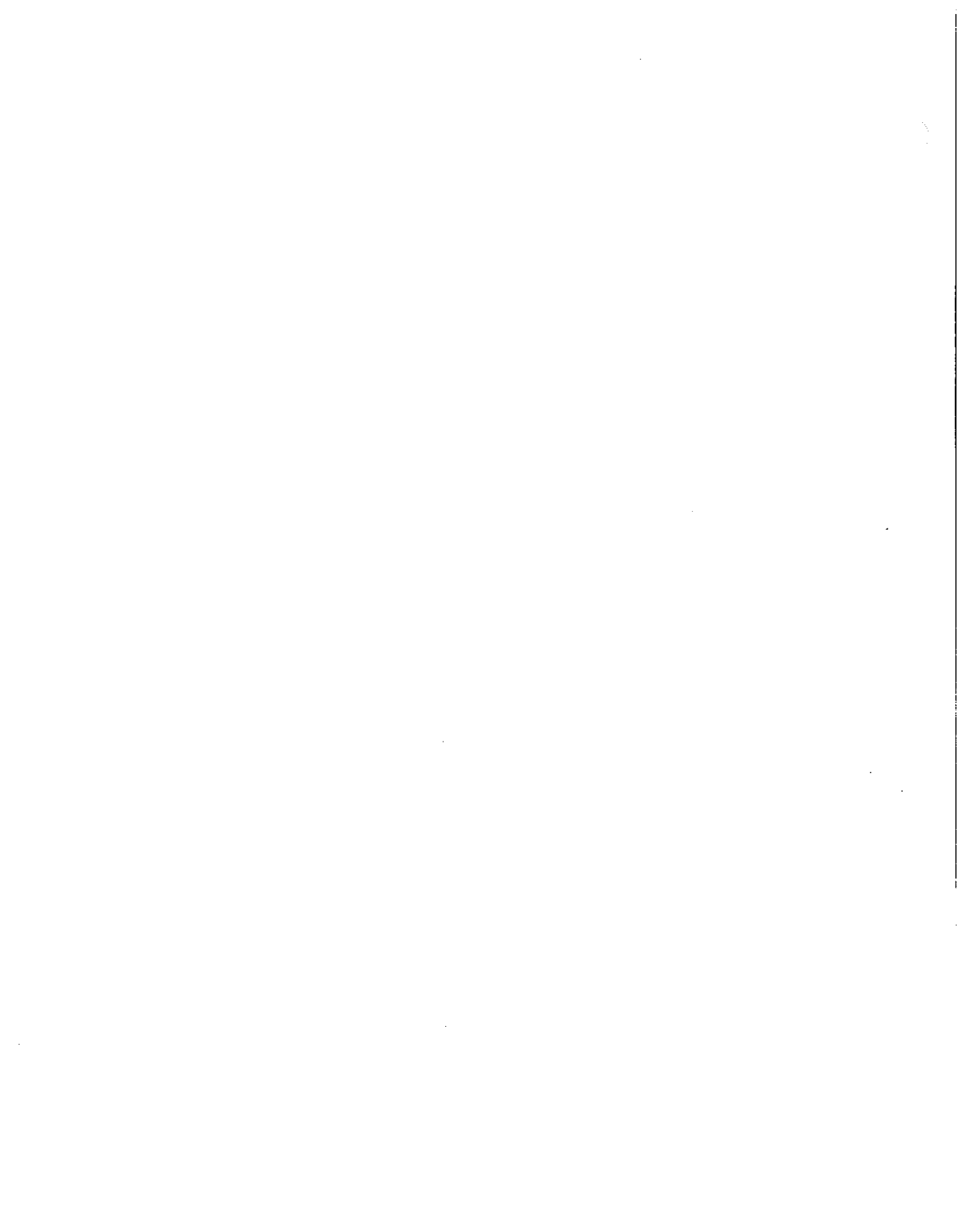
## 3 - POINT HITCH ASSEMBLY



3  
3

DWG. NO. 2494

REF. NO.	PART NUMBER	DESCRIPTION	QTY.	REF. NO.	PART NUMBER	DESCRIPTION	QTY.
1	79200968	3 - Point Hitch Assembly	1	13	79200880	Top Link	1
2	230-026-005	Klik Pin	4	14	79200881	Link	2
3	851-001-032	Lower Pin Assembly	2	15	034-05172	5/8 - 11 UNC UNI-Torque Lock Nut	2
4	117-010-008	Small Spacer	2	16	950-001-147	5/8 - 11 UNC x 2 1/2 LG Hex HD Cap Screw GR. 5	2
5	117-010-009	Large Spacer	2	17	79200993	Lower Trail Hitch Pin	1
6	875-001-123	Top Link Pin	2	18	79201083	Stand Mount Weld	1
7	890-001-009	Spacer	1	19	79201081	Stand Tube Weld	1
8	79200965	Spacer Collar	2	20	953-002-021	Clevis Pin, 5/8 x 3 1/2 LG.	1
9	952-002-010	1" Flat Washer	2	21	953-005-001	Cotter Pin	1
10	79200990	PTO Chain Assembly	1	22	715-06000	Red Reflector	1
11	79200964	Center Link Pin	1	23	715-06004	Amber Reflector (Opposite Side)	1
12	035-42064	1/4 x 1 1/2 Cotter Pin	4		79200997	Complete 3-PT Hitch Assembly	



# SECTION 4 BODY ASSEMBLIES

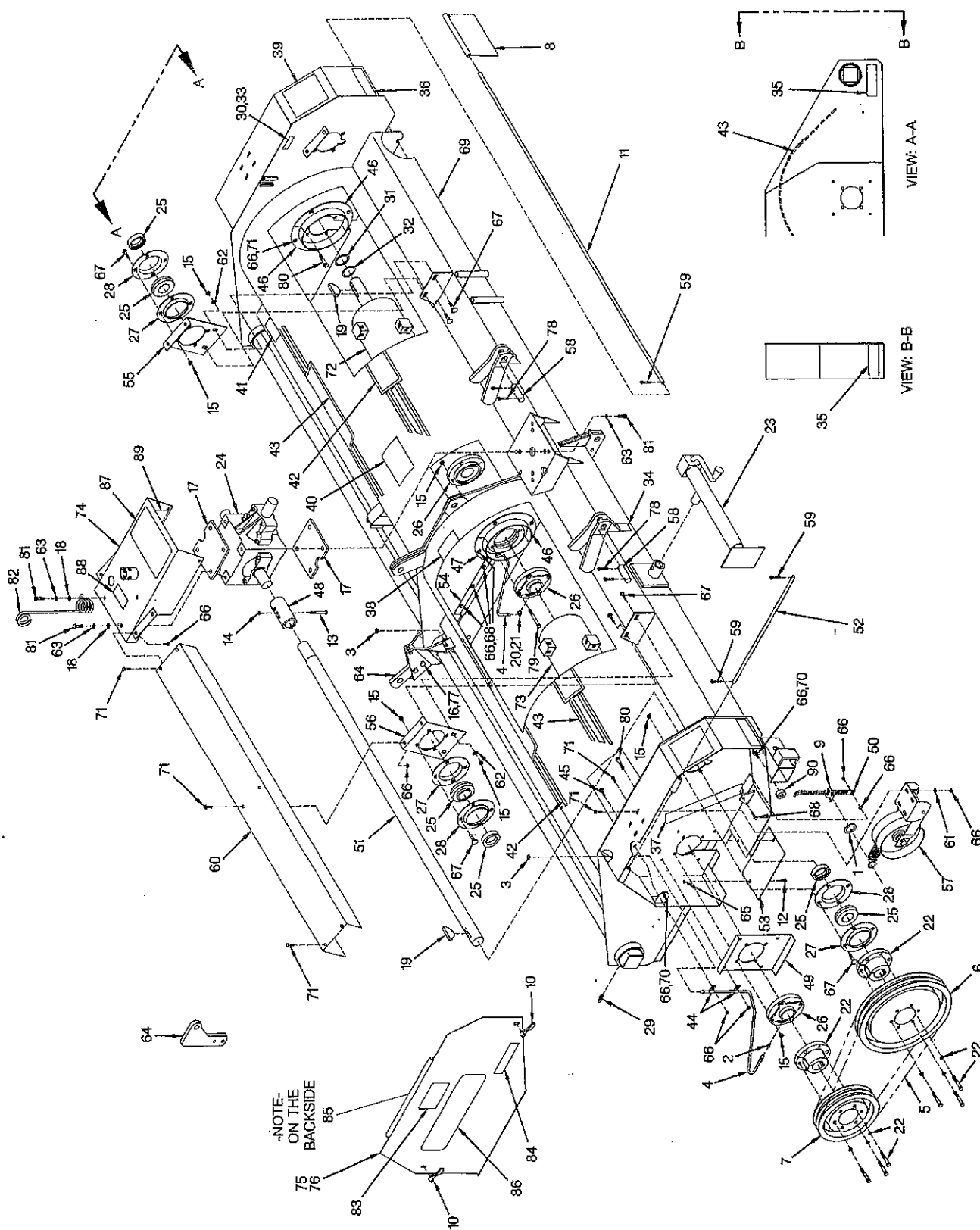
**PAGE 2**     **12 FT. 540 RPM, 1000 RPM & 15 FT. BODY ASSEMBLY**  
**PAGE 4**     **18 & 20 FT. BODY ASSEMBLY**

SEC  
4

# HINKER 4000 SHREDDER

## 12 FT. 540 RPM, 1000 RPM & 15 FT. BODY ASSEMBLY

SECTION 4



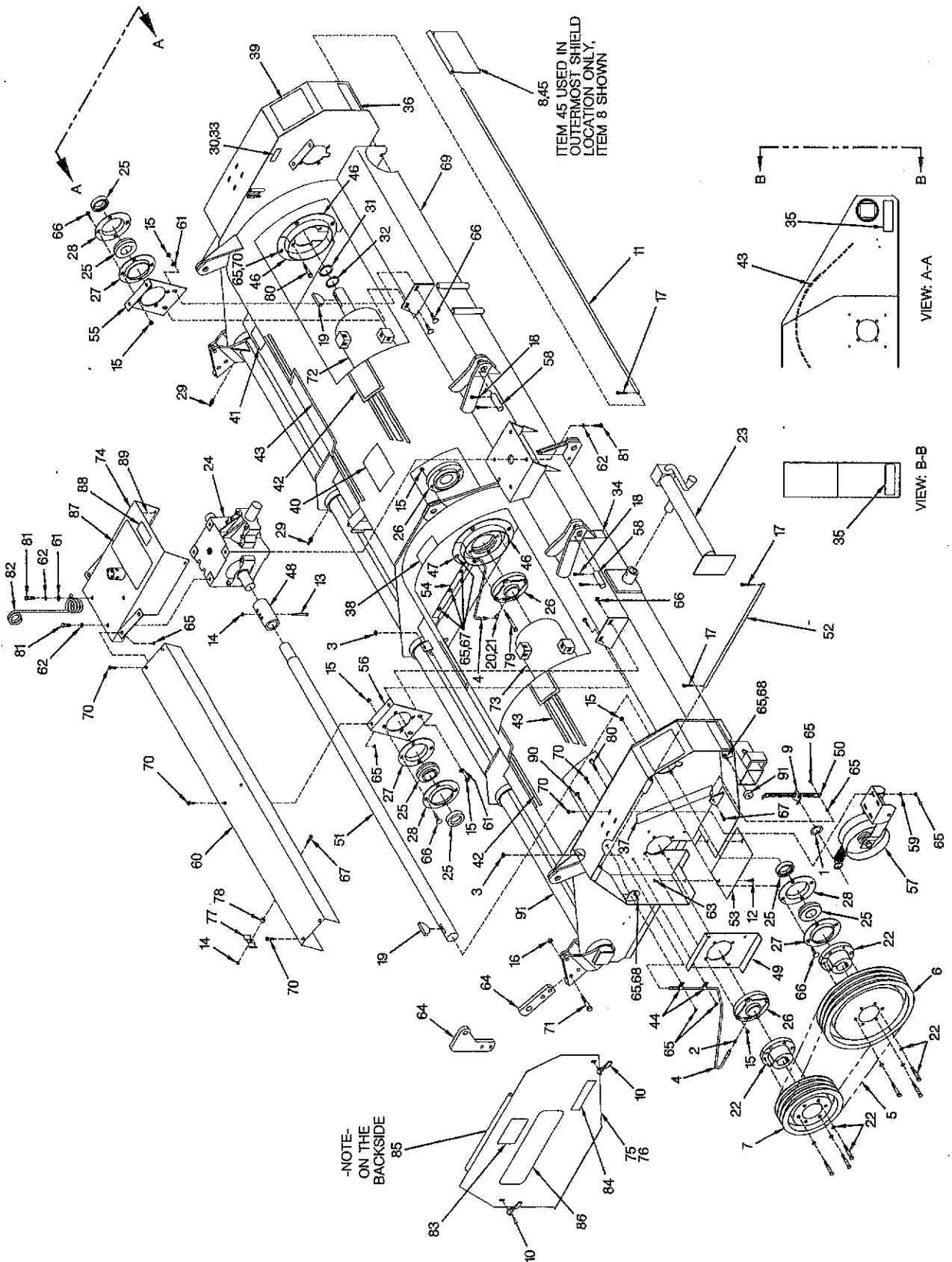
DWG. NO. 2495

## HINIKER 1700 SHREDDER

REF. NO.	PART NUMBER	DESCRIPTION	QTY.	REF. NO.	PART NUMBER	DESCRIPTION	QTY.
1	000-20179	1 3/8 Machinery Bushing	2	49	79200860	Bearing Support	2
2	000-20192	Adapter Fitting	4	50	79200866	Take Up Bar	2
3	000-24063	Lock Nut	4	51	79200912	12' Solid Line Shaft (Used On 12 FT. Shredders)	2
4	000-24090	Grease Hose	4		79200911	15' Solid Line Shaft (Used On 15 FT. Shredders)	2
5	516-15001	"HC" V-Belt Set of 2	2	52	79200920	Shield Rod	2
6	515-18008	Sheave, 2 Groove, Type "6"	2	53	79200923	Bottom Cover	2
7	51599032	Sheave, 2 Groove, Type "1"	2	54	79200928	Hose Shield	2
8	000-64011	Shield Plate	A/R	55	79200958	Bearing Support	2
9	000-65186	Spring Anchor	2	56	79201810	Outside Shield (Used on 12 Ft. Shredders)	2
10	000-65223	Threaded Handle	4		79201763	Outside Shield (Used on 12 Ft. Shredders)	2
11	000-65411	Flipper Shield Rod (Used On 12 FT. Shredders Only)	2	57		Idler Assembly (See Section 5 Page 3)	2
	79200976	Flipper Shield Rod (Used On 15 FT. Shredders Only)	2	58	79200967	Lower Hitch Pin	2
12	950-603-054	3/8 - 16 UNC x 3/4 Carr. Bolt SS GR. 5 (S/N - 101)	4	59	953-001-002	1/8 x 1" Sq. Cut Cotter Pin	6
13	031-06113	3/8 - 16 UNC x 3 LG Hex HD Cap Screw GR. 5	2	60	79201779	RH Line Shield	1
14	034-05168	3/8 - 16 UNC UNI-Torque Lock Nut	2	61	952-003-006	3/8 SAE Flat Washer	8
15	034-05170	1/2 - 13 UNC UNI-Torque Lock Nut	31	62	952-004-067	1/2 Flat Washer Hardened	4
16	034-05172	5/8 - 11 UNC UNI-Torque Lock Nut	3	63	952-001-004	1/2 Lockwasher (Used On 12 FT. & 15 FT. 1000 RPM Shredders)	1
17	79201778	LH Line Shield	1				
18	952-003-004	1/2 SAE Flat Washer	1	64	79201780	Cylinder Lug	4
19	035-60063	1/2 x 2 3/4 Woodruff Key	4	65	951-005-003	3/8 - 16 UNC Mac Lock Nut	51
20	203-51251	45° Elbow Lube Line	2	66	951-005-003	3/8 - 16 UNC Mac Lock Nut	20
21	203-51254	45° Elbow	2	67	950-003-028	1/2 - 13 UNC x 1 1/4 Lg Carr. Bolt	9
22	400-27038	Q.D. Hub, Type "SF", 2 Bore	4	68	950-002-014	3/8 - 16 UNC x 1 1/2 LG HHFL WZLK Bolt	4
23	400-34074	Tubular Mount Jack	1	69	79201120	Shield Bumper	4
24	517-00206	Gear Box Assembly, 1000 RPM, OBS R/B		70	950-002-010	3/8 - 16 UNC x 1 1/2 LG HHFL WZLK Bolt	28
	517-00216	Gear Box Assembly, 1000 RPM	1	71	950-002-009	3/8 - 16 UNC x 1" LG HHFL WZLK Bolt	1
25	600-03029	2" Spherical Bearing	4	72	79201808	LH 12' Cylinder Assembly Cup Knife	1
26	60005052	Flange Bearing, 2" Shaft	4		79201884	LH 12' Cylinder Assembly Side Knife	1
27	60400524	*Relube Flange W/O Fitting	4		79201812	LH 15' Cylinder Assembly Cup Knife	1
28	60400525	*Relube Flange W/Fitting	4		79201882	LH 15' Cylinder Assembly Side Knife	1
29	619719	5/16 Press Grease Zerk	3		79201958	LH 15' Cylinder Assembly Cup Knife & Side Slice	1
30	701-43002	1/8 Dia. Blind Rivet	2	73	79201809	RH 12' Cylinder Assembly Cup Knife	1
31	710-05332	Washer	A/R		79201883	RH 12' Cylinder Assembly Side Knife	1
32	710-05333	Washer	A/R		79201813	RH 15' Cylinder Assembly Cup Knife	1
33	715-02020	Name Plate Serial Tag	1		79201881	RH 15' Cylinder Assembly Side Knife	1
34	715-03174	Lift Here Decal	2		79201957	RH 15' Cylinder Assembly Cup & Side Slicer	1
35	715-06000	Red Reflective Strip	3	74	79201037	Shield Assembly With Decals	1
36	715-06004	Amber Reflective Strip	2	75	79201861	RH Cover Assembly	1
37	71503213	Belt Tension Decal	2	76	79201860	LH Cover Assembly (Not Shown)	1
38	71504126	Important Decal	1	77	950-001-147	5/8 - 11 UNC x 2 1/2 Hex Hd Cap Screw Gr. 5	4
39	71505171	Warning Decal	2	78	953-001-010	1/4 x 1 1/2 Sq. Cut Cotter Pin	2
40	71504131	Danger Decal	1	79	950-001-124	1/2 - 13 UNC x 4 LG Hex HD Cap Screw GR. 5	8
41	71504136	Important Decal	2	80	950-001-112	1/2 - 13 UNC x 2 LG Hex HD Cap Screw GR. 5	1
42	79201811	Inside Shield (Used on 12 Ft. Shredders)	2	81	950-001-111	1/2 - 13 UNC x 1 1/4 Lg Hex HD Cap Screw Gr. 5	2
	79201794	Inside Shield (Used on 15 Ft. Shredders)	2	82	000-69096	Hose Carrier (Used On Trail Shredders)	2
43	71505168	"Hiniker" Decal	6	83	71505169	Warning Decal	2
44	720-02399	3/8 Cable Clamp	4	84	71505167	Decal 1700	1
45	950-003-054	3/8 - 16 UNC x 3/4 Carr. Bolt SS GR. 5	2	85	71505170	Warning Decal	1
46	79200825	Anti-Wrap Ring	6	86	71504133	Important Decal	1
47	79200826	Relube Shield	2	87	71504132	Caution Decal	1
48	79200836	Splined Coupler W/Fittings	2	88	71504129	Caution Decal (Used On 1000 RPM Shield Assembly)	1
				89	79201215	Rockshaft Repair Kit 12FT. (Not Shown)	
					79201213	Rockshaft Repair Kit 15FT. (Not Shown)	

# HINIKER 4000 SHREDDER

## 18 & 20 FT. BODY ASSEMBLY



4 CIMS



# HINIKER 4000 SHREDDER

REF. NO.	PART NUMBER	DESCRIPTION	QTY.	REF. NO.	PART NUMBER	DESCRIPTION	QTY.
1	000-20179	1 3/8 Machinery Bushing	2		79200914	20' Solid Line Shaft	2
2	000-20192	Adapter Fitting	4	52	79200920	Shield Rod	2
3	000-24063	Lock Nut	4	53	79200923	Bottom Cover	2
4	000-24090	Grease Hose	4	54	79200928	Hose Shield	2
5	000-25168	"HC" V-Belt Set of 3	2	55	79200935	LH Bearing Support	1
6	000-28511	Drive Shaft Sheave	2	56	79200938	RH Bearing Support	1
7	000-28513	Cylinder Sheave	2	57		Idler Assembly (See Section 5 Page 3)	2
8	000-64011	Shield Plate	A/R	58	79200967	Lower Hitch Pin	2
9	000-65186	Spring Anchor	2	59	952-003-006	SAE Washer 3/8 Inch	8
10	000-65223	Threaded Handle	4	60	79200986	18' Line Shield	2
11	79201071	18' Flipper Shield Rod (Used On 18 FT. Shredder Only)	2		79200985	20' Line Shield	2
	000-65627	Rod (Used On 20 FT. Shredder Only)	2	61	952-004-067	1/2 Flat Washer Hardened	5
12	030-16041	5/16 - 18 UNC x 3/4 Lg Carr. Bolt GR. 5 (S/N - 100)	4	62	952-001-004	Lockwasher, 1/2 Inch	8
	950-003-054	3/8 - 16 UNC x 3/4 Lg Carr. Bolt SS GR. 5 (S/N - 101)	4	63	951-005-036	Mac-Lock Nut, 5/16 - 18 UNC (S/N - 100)	4
13	031-06113	HHCS, 3/8 - 16 UNC x 3 GR. 5	2		951-005-003	Mac Lock Nut 3/8 - 16 UNC (S/N - 101)	4
14	034-05168	UNI-Torque Lock Nut, 3/8 - 16 UNC	6	64	79201005	Cylinder Lug	2
15	034-05170	UNI-Torque Lock Nut, 1/2 - 13 UNC	32	65	951-005-003	Mac-Lock Nut, 3/8 - 16 UNC	51
16	034-05172	UNI-Torque Lock Nut, 5/8 - 11 UNC	6	66	950-003-028	Carriage Bolt, 1/2 - 13 UNC x 1 1/4 GR. 5	20
17	953-001-002	Square Cut Cotter Pin, 1/8 x 1" Long	6	67	950-002-014	HHFL Wiz-Lock Bolt, 3/8 - 16 UNC x 1 1/4	9
18	953-001-010	Square Cut Cotter Pin, 1/8 x 1 1/2 Long	4	68	950-002-010	HHFL Wiz-Lock Bolt, 3/8 - 16 UNC x 1 1/2	4
19	035-60063	Woodruff Key, 1/2 x 2 3/4	4	69		18' Body Weld	NA
20	203-51251	Lube Line 45° Elbow	2			20' Body Weld	NA
21	203-51254	45° Elbow	2	70	950-002-009	HHFL Wiz-Lock Bolt, 3/8 - 16 UNC x 1"	36
22	400-27039	Q.D. Hub, Type "E", 2 Bore	4	71	950-001-024	HHCS, 5/8 - 11 UNC x 2 1/2 GR. 8	6
23	400-34074	Tubular Mount Jack	1	72	79201033	18' LH Cylinder Assembly (S/N - 100) Cup Knife Replaced By 79201111 Side Knife	NA
24	517-00206	1000 RPM Gear Box Assembly	1		79201035	18' RH Cylinder Assembly (S/N - 100) Cup Knife Replaced By 79201110 Side Knife	NA
25	600-03029	2" Spherical Bearing	4			18' Cylinder Assembly (S/N - 101)	2
26	60005052	Flange Bearing, 2" Shaft	4	73	79201034	18' RH Cylinder Assembly (S/N - 100) Cup Knife Replaced By 79201111 Side Knife	NA
27	60400524	Relube Flange W/O Fitting	4		79201036	20' RH Cylinder Assembly (S/N - 100) Cup Knife Replaced By 79201110 Side Knife	NA
28	60400525	Relube Flange W/Fitting	4		79201110	20' Cylinder Assembly (S/N - 101)	2
29	619719	Grease Fitting, 5/16 Inch	5	74	79201037	1000 RPM Shield W/Decals	1
30	701-43002	1/8 Dia. Blind Rivet	2	75	79201038	RH Cover W/Decals	1
31	710-05332	Washer	A/R	76	79201039	LH Cover W/Decals (Not Shown)	1
32	710-05333	Washer	A/R	77	850-001-520	Hose Clamp	4
33	715-02020	Name Plate Serial Tag	1	78	850-001-521	Clamp Spacer	4
34	715-03174	Decal "Lift Here"	2	79	950-001-142	HHCS, 1/2 - 13 UNC x 3 1/2 GR. 5 (20 Ft. Only)	4
35	715-06000	Red Reflective Tape	3		950-001-124	HHCS, 1/2 - 13 UNC x 4 GR. 5 (18 Ft. Only)	4
36	715-06004	Amber Reflective Tape	2	80	950-001-112	HHCS, 1/2 - 13 UNC x 2 GR. 5	8
37	71503213	Decal "Belt Tension"	2	81	950-001-111	HHCS, 1/2 - 13 UNC x 1 1/4 GR. 5	8
38	71504126	Decal "Important"	1	82	000-69096	Hose Carrier (Used on Trail Shredders)	1
39	71504130	Decal "Warning"	2	83	71504127	Warning Decal	2
40	71504131	Decal "Danger"	1	84	71505162	Brady Decal	2
41	71504136	Decal "Important"	2	85	71504134	Warning Decal	2
42	71505160	Decal "4000"	2	86	71505163	Hiniker Decal	2
43	71505161	Decal "Hiniker"	2	87	71504132	Caution Decal	1
44	720-02399	Cable Clamp, 3/8 Inch	4	88	71504129	Caution Decal	1
45	79201072	18 FT. Shield Plate (Used on 18 FT. Shredder Only)	2	89	71504133	Important Decal	1
46	79200825	Anti-Wrap Ring	6	90	950-003-054	3/8 - 16 UNC x 3/4 Carr. Bolt SS Gr. 5	2
47	79200826	Relube Shield	2	91	79201120	Shield Bumper (Starting S/N - 101)	4
48	79200836	Splined Coupler W/Fittings	2	92	79201218	Rockshaft Repair Kit 18 FT.	1
49	79200860	Bearing Support	2		79201216	Rockshaft Repair Kit 20 FT.	1
50	79200866	Take Up Bar	2				
51	79200913	18' Solid Line Shaft	2				

4 Cms

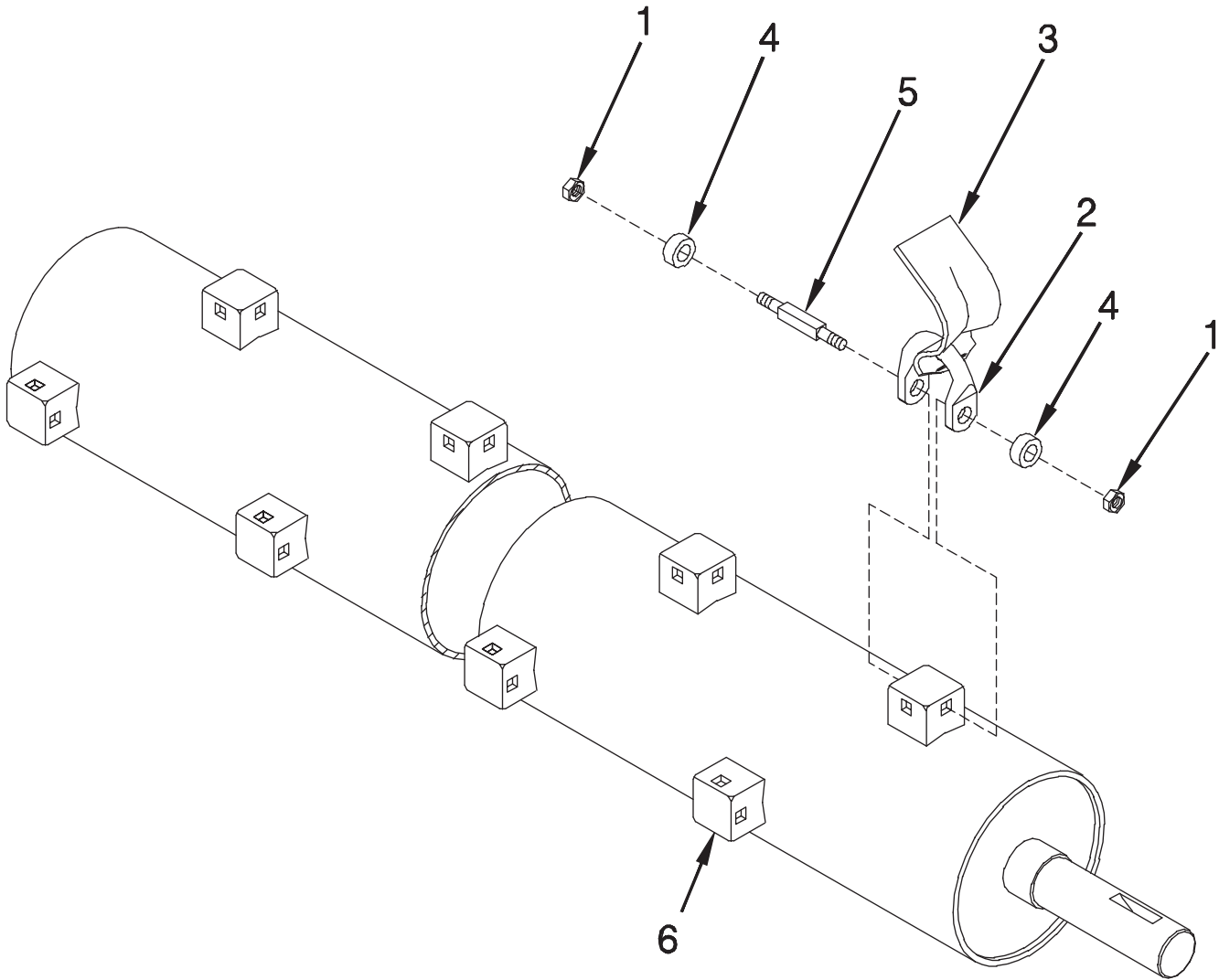


# SECTION 5 COMPONENT PARTS

<b>PAGE 2</b>	<b>KNIFE &amp; ROTOR ASSEMBLY</b>
<b>PAGE 3</b>	<b>IDLER ASSEMBLY</b>
<b>PAGE 4</b>	<b>WHEEL &amp; LEG ASSEMBLY</b>
<b>PAGE 5</b>	<b>SMV SIGN ASSEMBLY</b>

# HINIKER 4000 SHREDDER

## KNIFE & ROTOR ASSEMBLY



### \* QUANTITY USED

REF. NO.	12'	15'	18'	20'
1	96	144	144	192
2	48	72	72	96
3	48	72	72	96
4	96	144	144	192
5	48	72	72	96
6	48	72	72	96

DWG. NO. 2497

REF. NO.	PART NUMBER	DESCRIPTION	QTY.	REF. NO.	PART NUMBER	DESCRIPTION	QTY.
1	951-005-085	7/16-14 Flex Lock Nut	*	4	79201220	Spacer	*
2	79200959	Attaching Ring	*	5	79201221	Pivot Stud	*
3	79201350	Shredder Knife Formed Flange	*	6	79200961	Knife Bracket	*

SEC  
5

INSTALLATION INSTRUCTIONS FOR:  
4000 SERIES SHREDDER 3" CUP KNIFE

Hiniker Company  
P.O. BOX 3407  
Airport Road  
Mankato, MN 56002

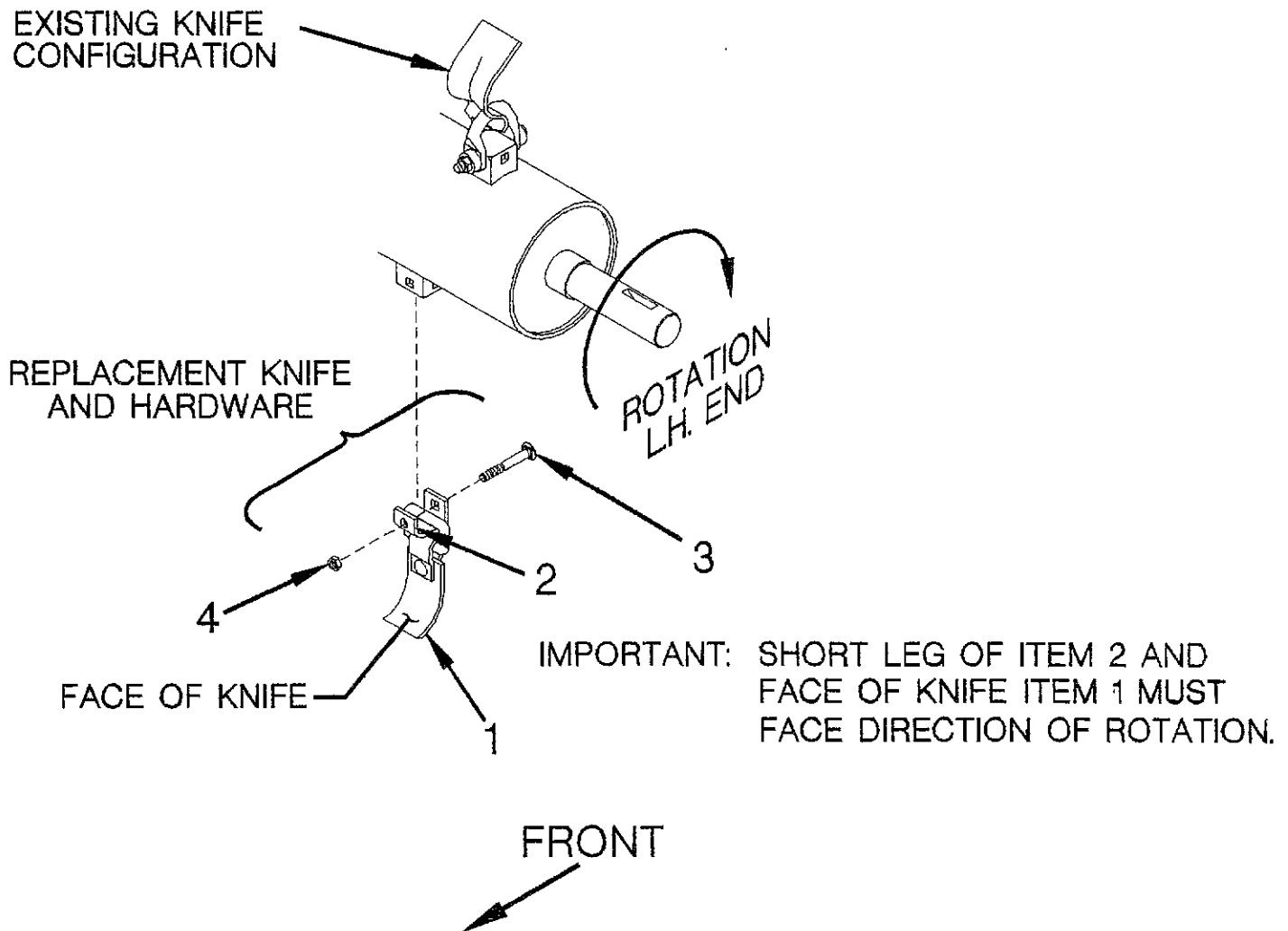
PART NUMBER: 79201432

January 5, 1994

SHREDDER 3" CUP KNIFE REPLACEMENT KIT NUMBER: 79201434



**WARNING:** DEATH OR SERIOUS INJURY CAN RESULT. DO NOT SERVICE A SHREDDER IN A RAISED POSITION UNLESS IT HAS BEEN SECURELY BLOCKED FROM UNEXPECTED DROPPING.



Replacement kit 79201434 contains 24 knives and hardware.

DRAWING NO. 2913

REF. NO.	PART NUMBER	DESCRIPTION	QTY	REF. NO.	PART NUMBER	DESCRIPTION	QTY
1	79201437	KNIFE ASSEMBLY	24	3	030-16139	CARRIAGE BOLT, 1/2-13 UNC X 3 1/4	24
2	000-65141	KNIFE PIVOT	24	4	034-05170	UNI-TORQUE LOCKNUT, 1/2-13 UNC	24

12 FOOT SHREDDER = 48 KNIVES = 2 KITS  
 15 FOOT SHREDDER = 72 KNIVES = 3 KITS  
 18 FOOT SHREDDER = 72 KNIVES = 3 KITS  
 20 FOOT SHREDDER = 96 KNIVES = 4 KITS

# INSTALLATION INSTRUCTIONS FOR: 4000 SERIES SHREDDER SIDE SLICER KNIFE

Hiniker Company  
P.O. BOX 3407  
Airport Road  
Mankato, MN 56002

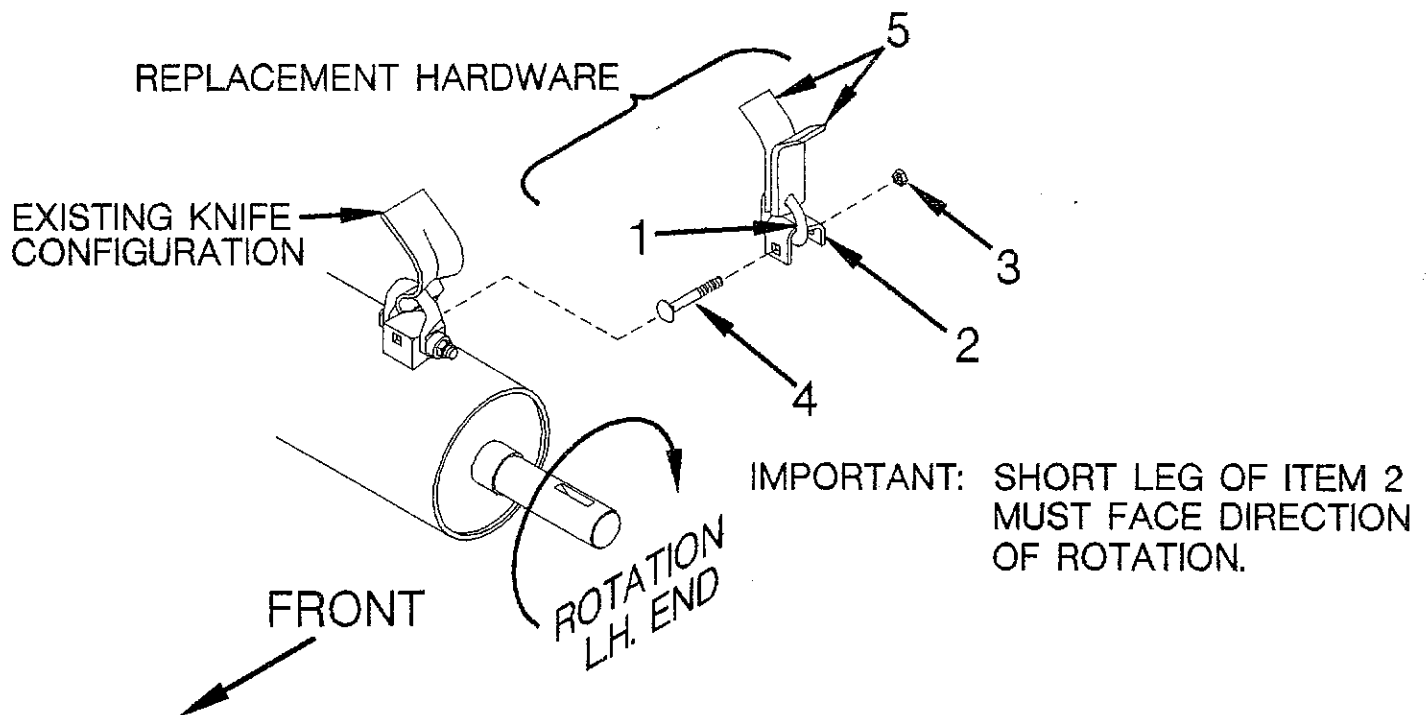
PART NUMBER: 79201433

January 5, 1994

SHREDDER SIDE SLICER KNIFE REPLACEMENT KIT NUMBER: 79201435



**WARNING:** DEATH OR SERIOUS INJURY CAN RESULT. DO NOT SERVICE A SHREDDER IN A RAISED POSITION UNLESS IT HAS BEEN SECURELY BLOCKED FROM UNEXPECTED DROPPING.



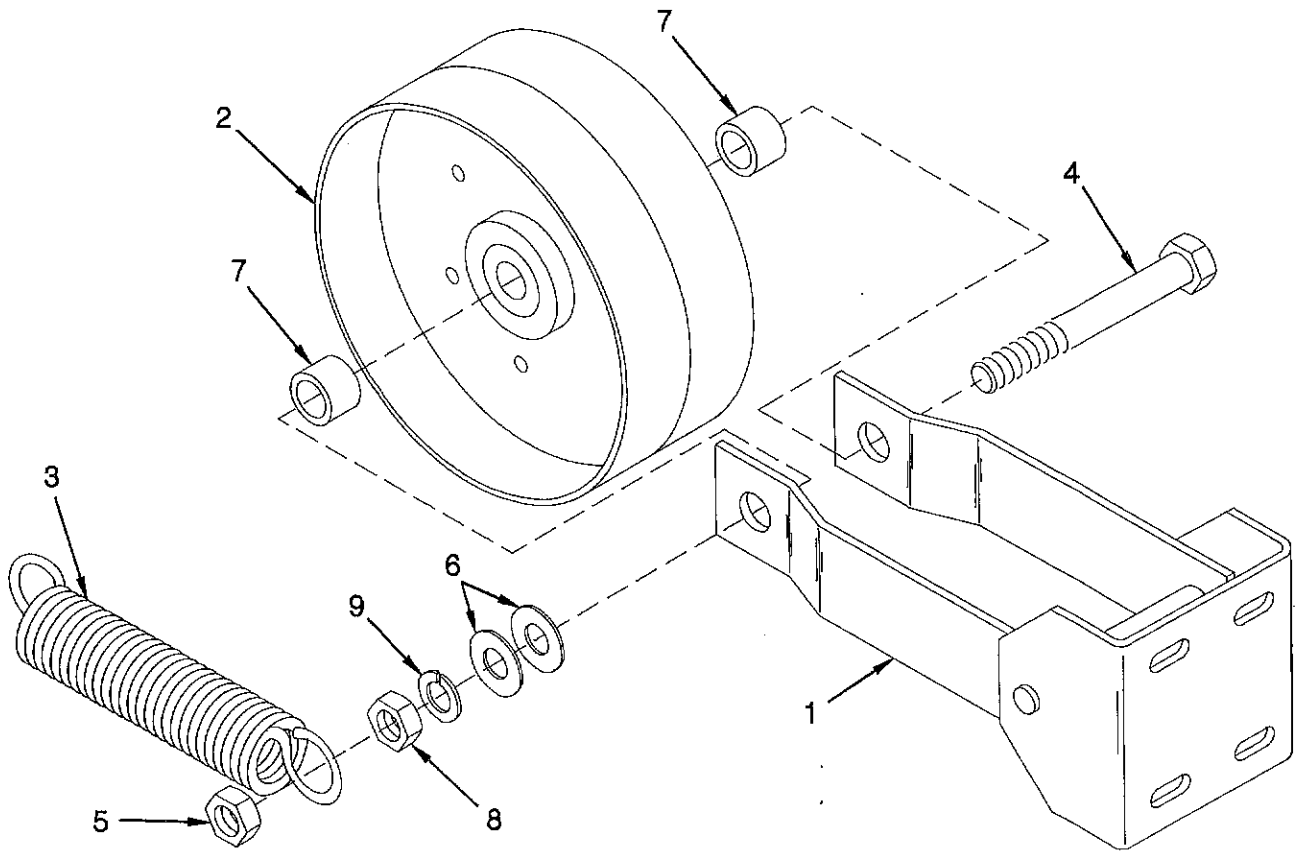
Replacement kit 79201435 contains hardware to update 24 knives.

DRAWING NO. 2914

REF. NO.	PART NUMBER	DESCRIPTION	QTY	REF. NO.	PART NUMBER	DESCRIPTION	QTY
1	000-65142	D-RING	24	4	030-16139	CARRIAGE BOLT, 1/2-13 UNC X 3 1/4	24
2	000-65141	KNIFE PIVOT	24	5	000-65143	SIDE KNIFE	48
3	034-05170	UNI-TORQUE LOCKNUT, 1/2-13 UNC	24				

12 FOOT SHREDDER = 48 KNIVES = 2 KITS  
 15 FOOT SHREDDER = 72 KNIVES = 3 KITS  
 18 FOOT SHREDDER = 72 KNIVES = 3 KITS  
 20 FOOT SHREDDER = 96 KNIVES = 4 KITS

IDLER ASSEMBLY

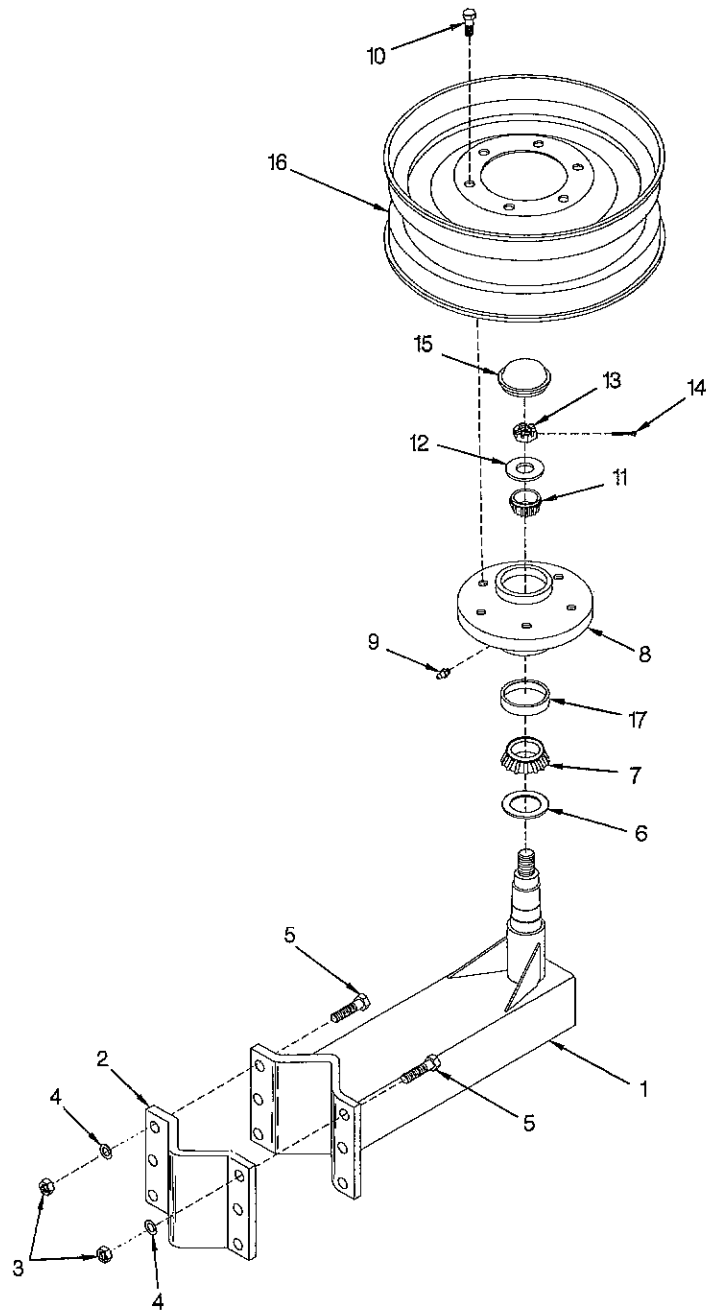


DWG. NO. 2514

REF. NO.	PART NUMBER	DESCRIPTION	QTY.	REF. NO.	PART NUMBER	DESCRIPTION	QTY.
1	79200955	Idler Weld	1	6	033-12013	Flat Washer, 3/4 Inch	2
2	51599031	8" Idler Pulley	1	7	400-10466	Spacer	2
3	725-03047	Extension Spring	1	8	951-001-009	Hex Nut, 3/4 - 10 UNC	1
4	031-06365	HHCS, 3/4 - 10 UNC x 5 Long GR. 5	1	9	952-001-006	Lockwasher, 3/4 Inch	1
5	951-005-037	2 - Way Locknut, 3/4 - 10 UNC	1		79200956	Complete Idler Assembly	

# HINIKER 4000 SHREDDER

## WHEEL & LEG ASSEMBLY

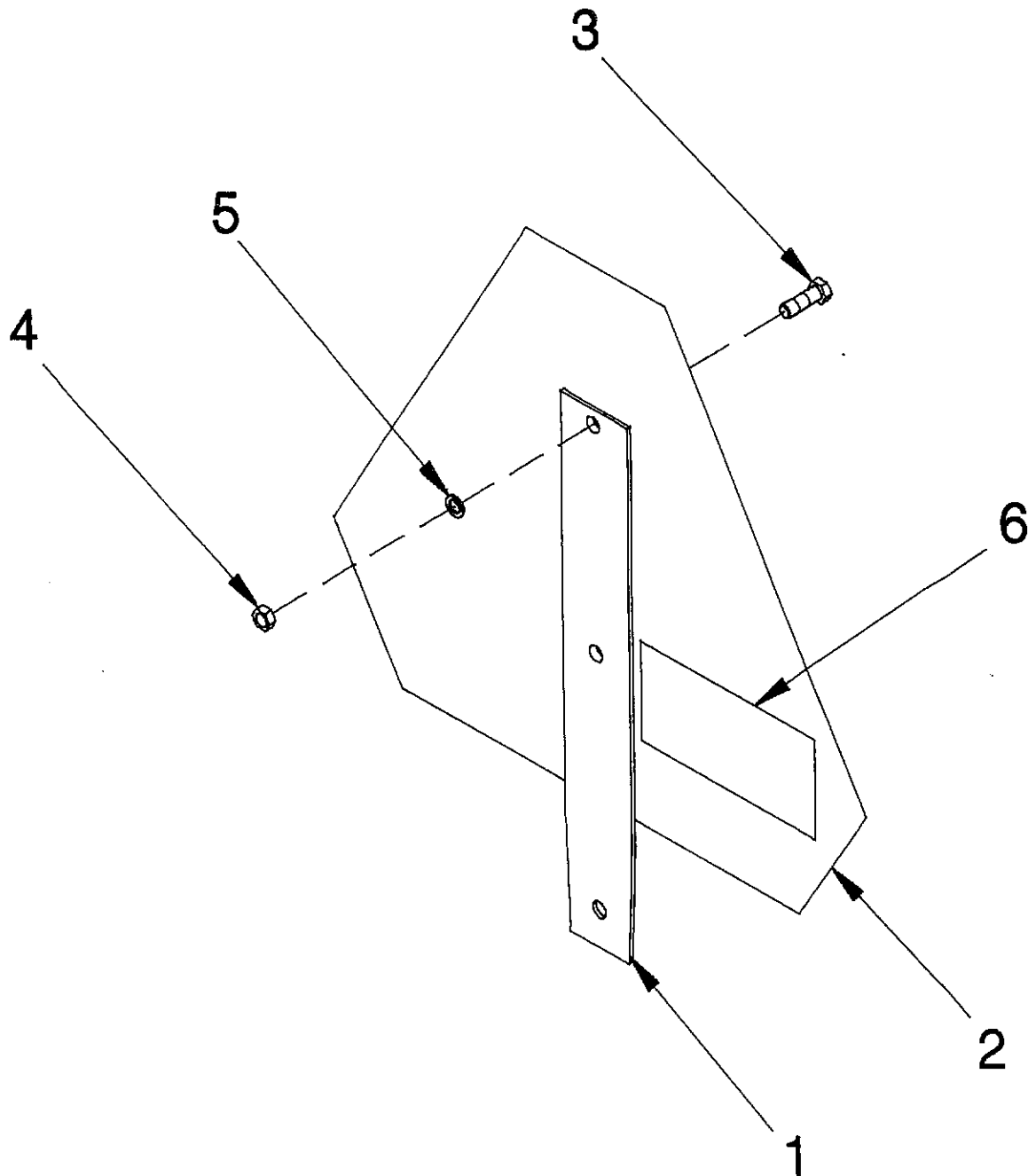


DWG. NO. 2500

REF. NO.	PART NUMBER	DESCRIPTION	QTY.	REF. NO.	PART NUMBER	DESCRIPTION	QTY.
1	79200828	Wheel Leg Weld	1	9	955-001-001	1/8 - 27 NPT Grease Fitting	1
2	79200827	Clamp Plate	1	10	950-011-006	1/2 - 20 UNC x 1" LG Wheel Bolt	6
3	951-001-008	5/8 - 11 UNC Hex Nut	6	11	850-001-153	Cone LM 67048	1
4	952-001-005	5/8 Lockwasher	6	12	802-000-007	7/8 Washer	1
5	950-001-023	5/8 - 11 UNC x 2 LG Hex HD Cap Screw GR. 5	6	13	951-005-002	7/8 - 14 UNC Slotted Nut	1
6	850-001-164	Triple Lip Seal	1	14	953-001-017	5/32 x 1 1/2 Sq. Cut Cotter Pin	1
7	850-001-154	Cone J.L. 69349	1	15	850-001-155	Dust Cap	1
8	850-003-053	Hub W/Wear Sleeve	1	16	850-001-828	5 KB x 15 Flim - 6 Bolt (Not Part of Assembly)	1
				17	850-001-555	Wear Sleeve	1
					79200973	Complete Wheel Leg Assembly W/Hub	



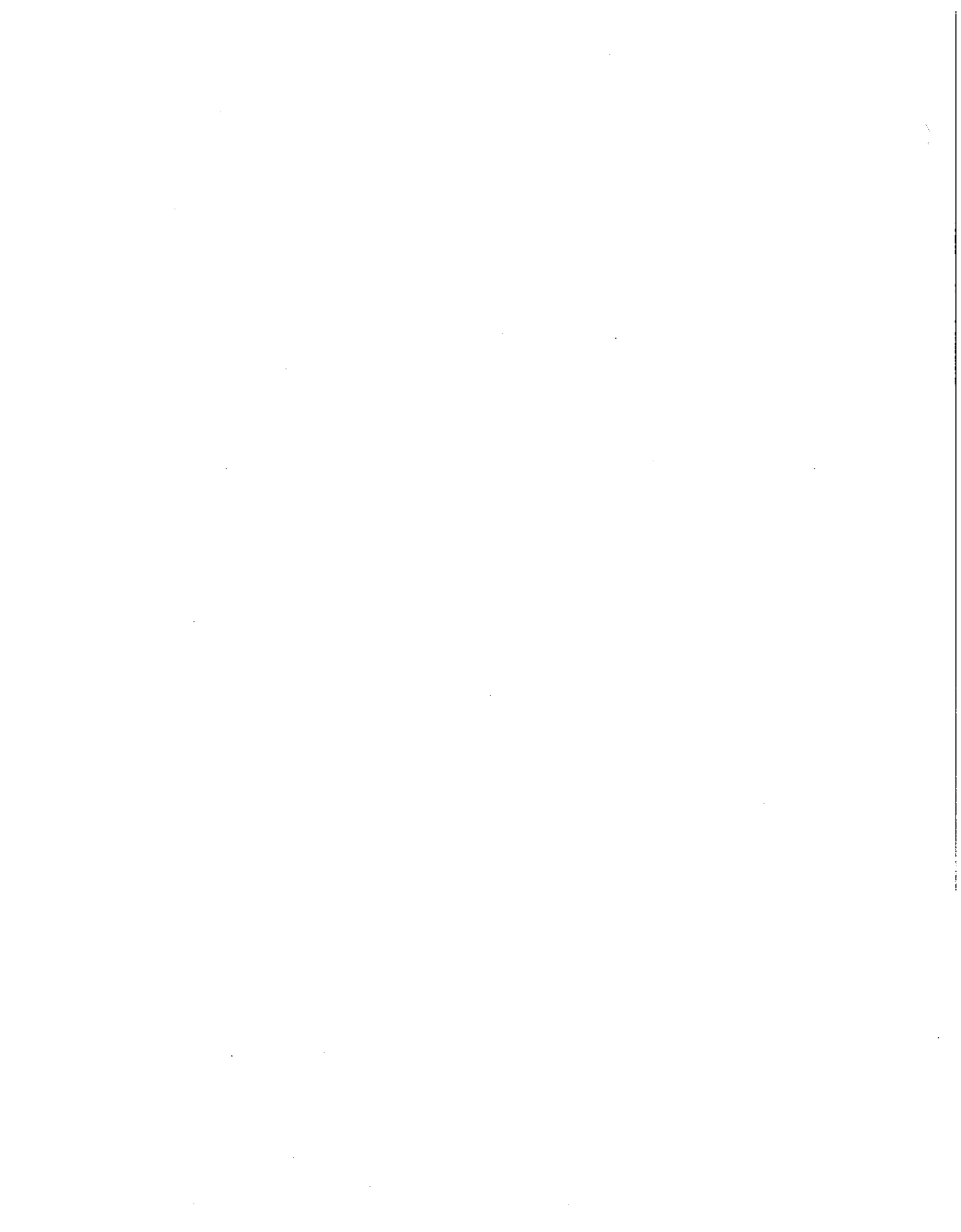
SMV SIGN ASSEMBLY



DWG. NO. 2521

REF. NO.	PART NUMBER	DESCRIPTION	QTY.	REF. NO.	PART NUMBER	DESCRIPTION	QTY.
1	400-22083	Mount	1	5	033-22007	#10 Lockwasher	2
2	715-04009	SMV Emblem	1	6	715-03056	Caution Decal	1
3	031-10599	#10 - 24 UNC x 1/2 LG Slotted RD HD Mach. Screw	2		790-41218	Complete SMV Sign Assembly	
4	951-001-002	#10 - 24 UNC Hex Nut	2				



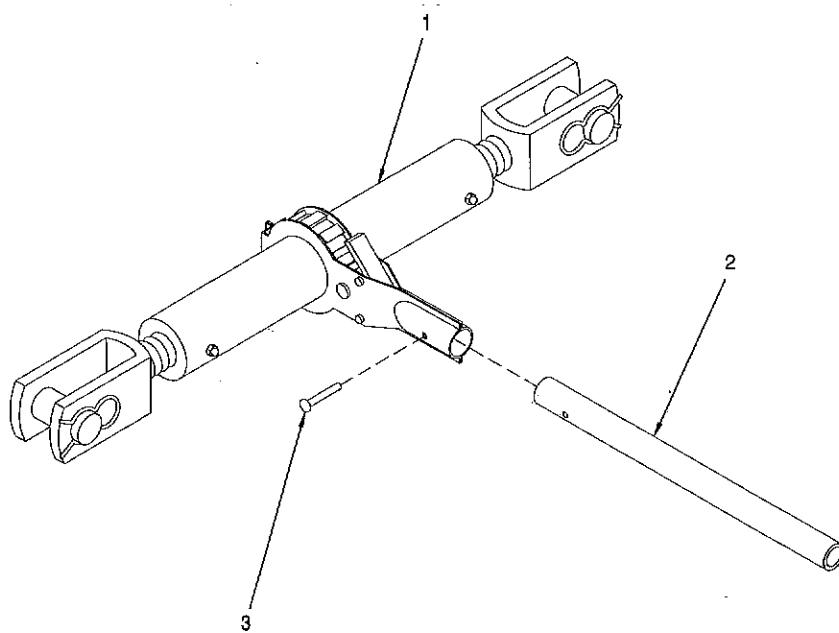


# SECTION 6 OPTIONAL EQUIPMENT

<b>PAGE 2</b>	<b>RATCHET JACK ASSEMBLY</b>
<b>PAGE 3</b>	<b>DISC HITCH ASSEMBLY</b>
<b>PAGE 4</b>	<b>END TRANSPORT KIT</b>
<b>PAGE 5</b>	<b>HUB &amp; SPINDLE ASSEMBLY</b>
<b>PAGE 6</b>	<b>TOUCH UP KIT</b>

# HINIKER 4000 SHREDDER

## RATCHET JACK ASSEMBLY

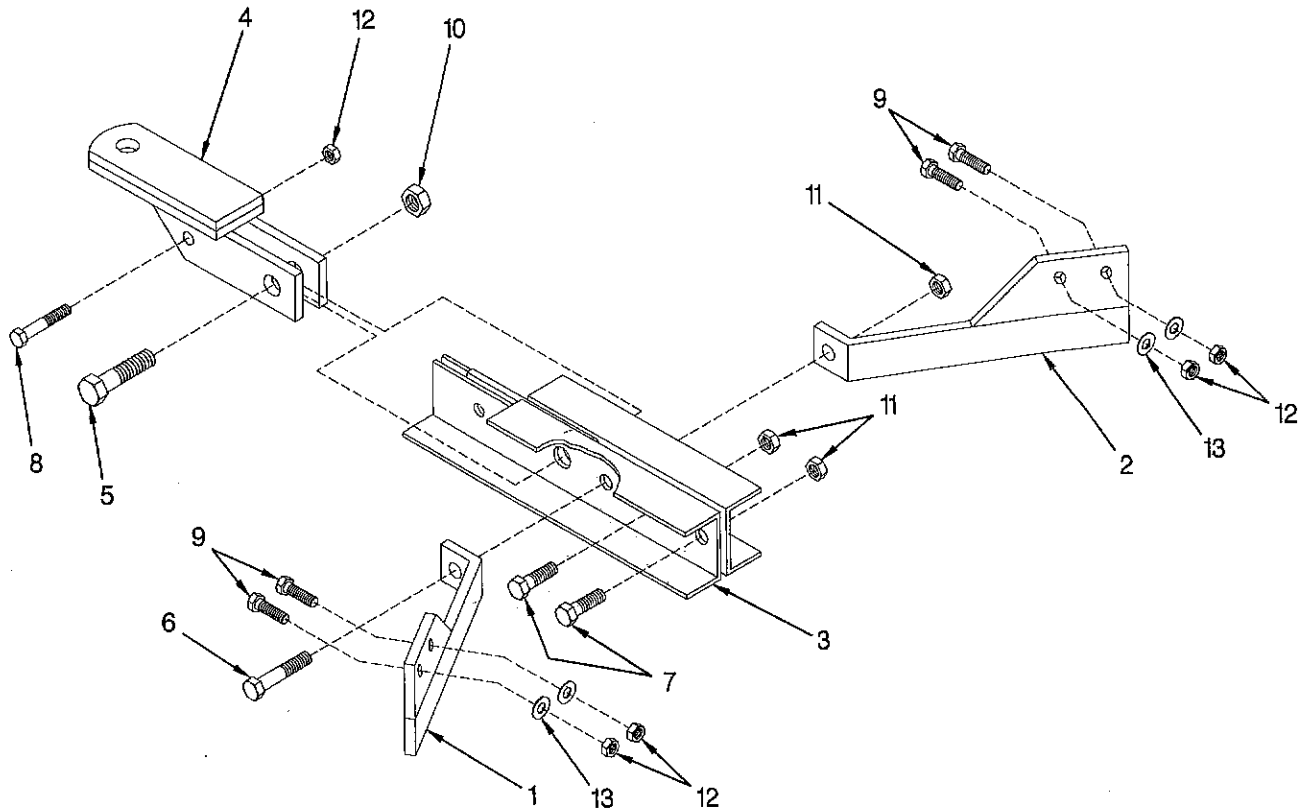


DWG. NO. 2502

REF. NO.	PART NUMBER	DESCRIPTION	QTY.	REF. NO.	PART NUMBER	DESCRIPTION	QTY.
1	000-24556	Ratchet Jack Body	1	3	954-001-012	Rivet	1
2	000-24502	Screw Jack Handle	1		000-04067	Complete Ratchet Jack Assembly	

SECTION 6

DISC HITCH ASSEMBLY



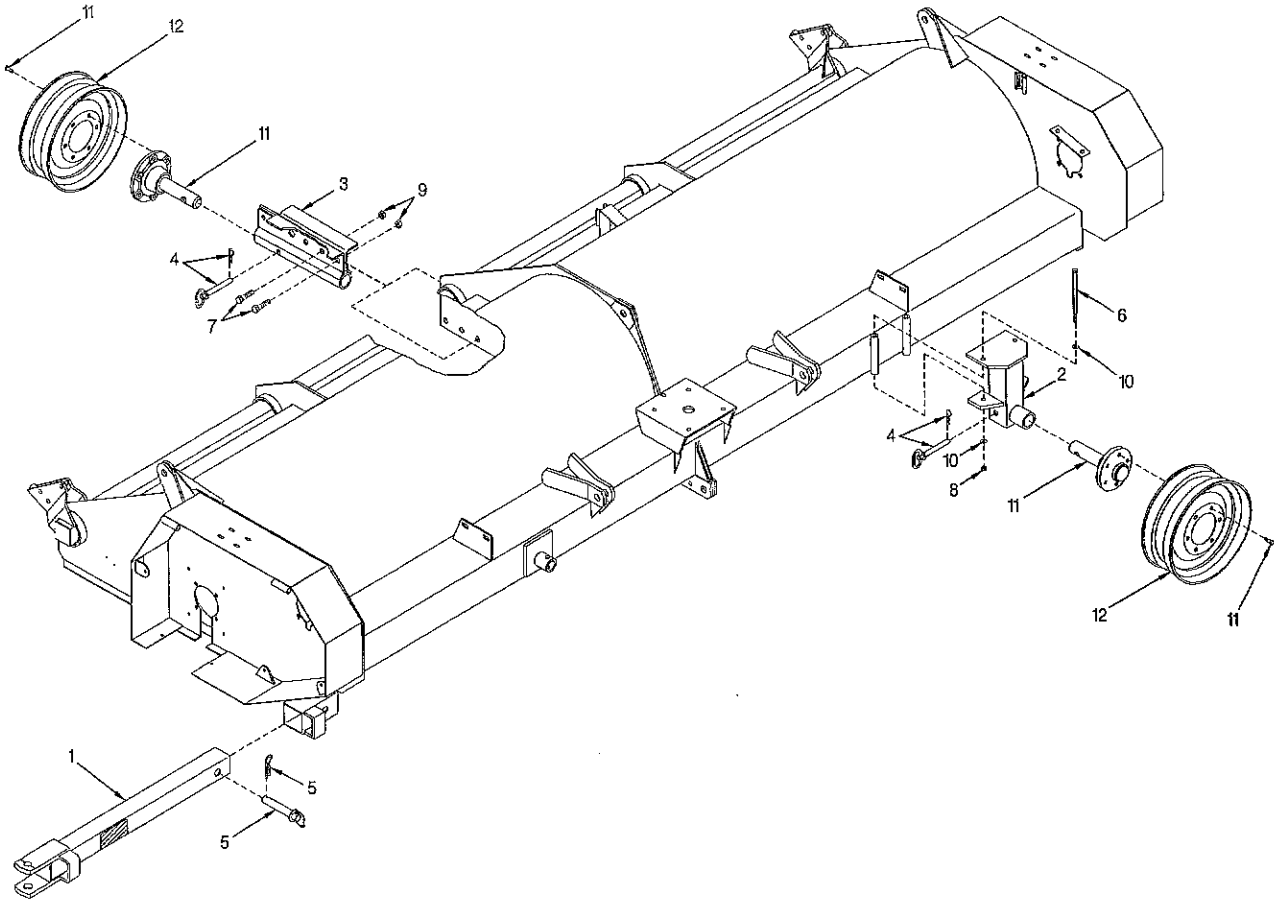
DWG. NO. 2499

REF. NO.	PART NUMBER	DESCRIPTION	QTY.	REF. NO.	PART NUMBER	DESCRIPTION	QTY.
1	79201055	RH Brace Weld	1	8	031-06308	5/8 - 11 UNC x 2 3/4 LG Hex HD Cap Screw GR. 5	1
2	79201056	LH Brace Weld	1	9	950-001-132	5/8 - 11 UNC x 1 3/4 LG Hex HD Cap Screw GR. 5	4
3	79201063	Hitch Mount Weld	1	10	034-05175	1" - 8 UNC UNI-Torque Lock Nut	1
4	79201059	Disc Hitch Tongue Weld	1	11	034-05173	3/4 - 10 UNC UNI-Torque Lock Nut	3
5	031-06459	1" - 8 UNC x 3 LG Hex HD Cap Screw GR. 5	1	12	034-05172	5/8 - 11 UNC UNI-Torque Lock Nut	5
6	950-001-031	3/4 - 10 UNC x 3 LG Hex HD Cap Screw GR. 5	1	13	952-002-007	5/8 WRT Flat Washer	4
7	950-001-029	3/4 - 10 UNC x 1 3/4 LG Hex HD Cap Screw GR. 5	2		79201065	Disc Hitch Bundle	



# HINIKER 4000 SHREDDER

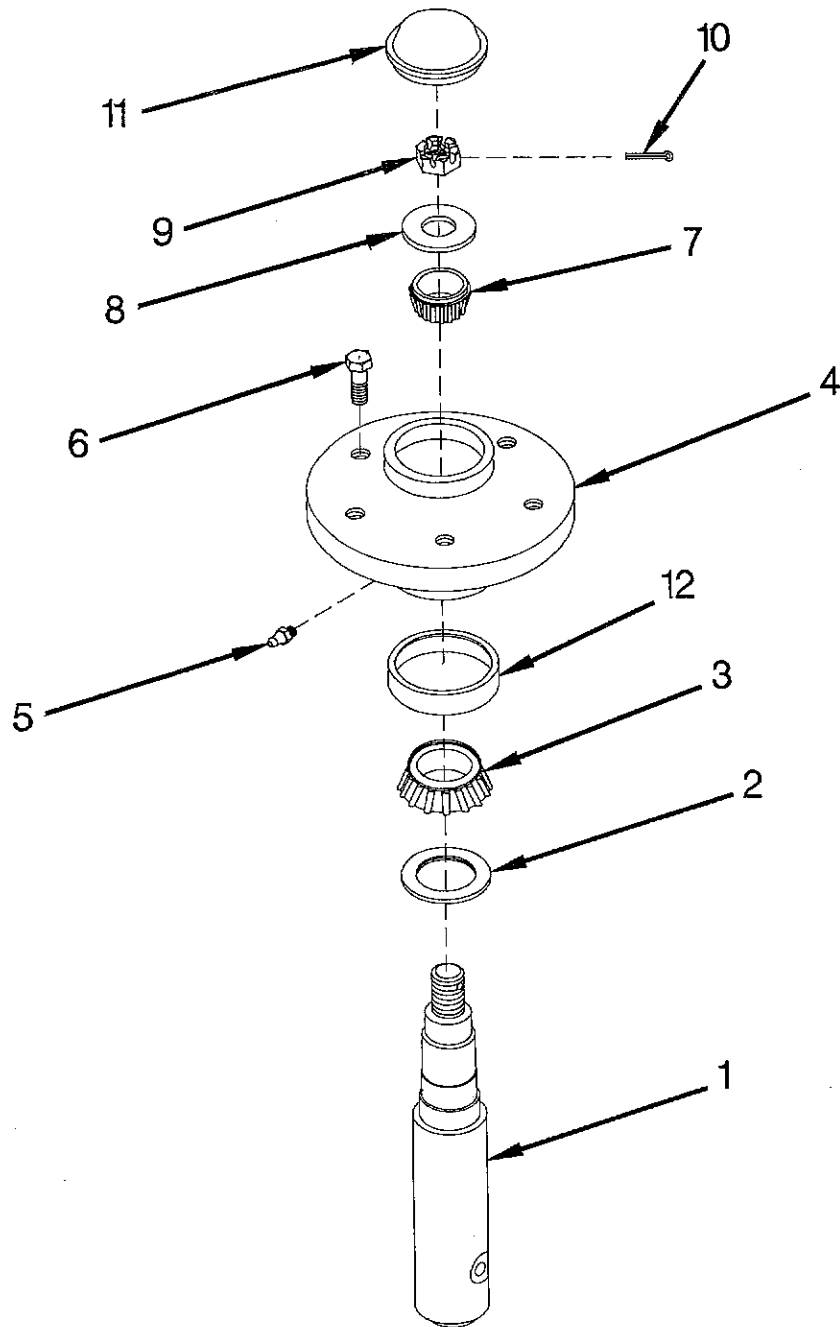
## END TRANSPORT KIT



DWG. NO. 2501

REF. NO.	PART NUMBER	DESCRIPTION	QTY.	REF. NO.	PART NUMBER	DESCRIPTION	QTY.
1	79201040	Transport Tongue Assembly	1	7	950-001-166	3/4 - 10 UNC X 2 LG Hex HD Cap Screw GR. 5	3
2	79201023	Front Transport Mount Weld	1	8	034-05170	1/2 - 13 UNC UNI-Torque Lock Nut	2
3	79200977	Rear Transport Weld	1	9	034-05173	3/4 - 10 UNC UNI-Torque Lock Nut	3
4	850-001-309	Hitch Pin Assembly	2	10	952-003-004	1/2 SAE Flat Washer	4
5	000-20255	Clevis Pin Assembly	1	11	79201044	End Transport Spindle Assembly (Sec. 6 Page 5)	2
6	950-001-259	1/2 - 13 UNC x 8 LG Hex HD Cap Screw GR. 5	2	12	850-001-828	5 KB x 15 Flim - 6 Bolt	2

HUB & SPINDLE ASSEMBLY

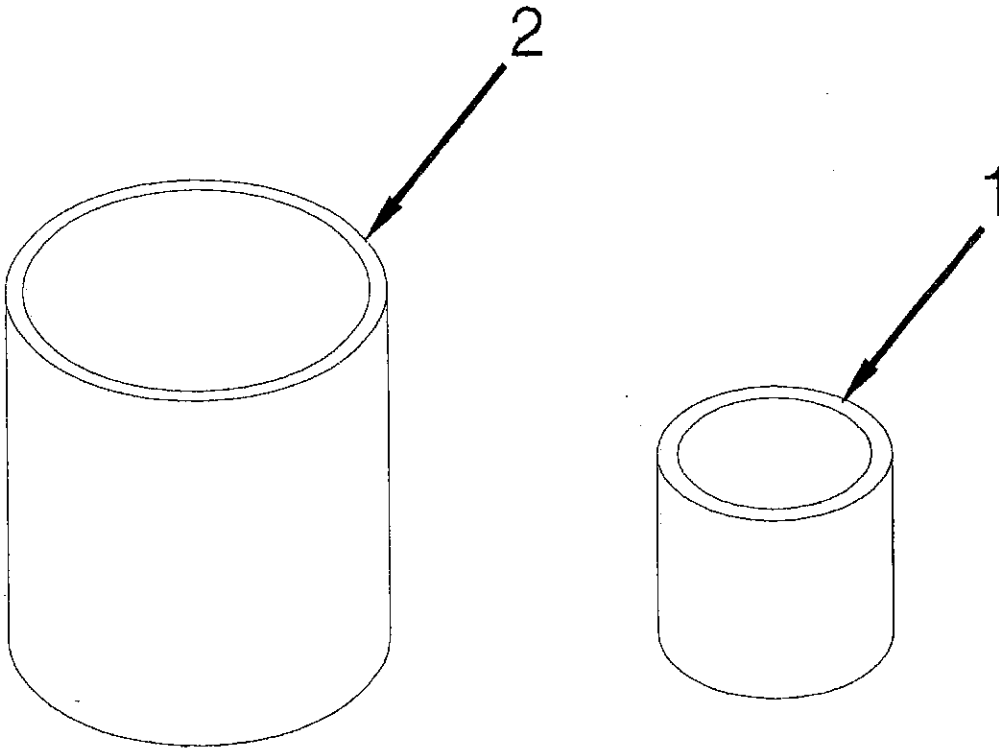


DWG. NO. 2519

REF. NO.	PART NUMBER	DESCRIPTION	QTY.	REF. NO.	PART NUMBER	DESCRIPTION	QTY.
1	79201028	Spindle End Transport	1	8	802-000-007	7/8 Washer	1
2	850-001-164	Triple Lip Seal	1	9	951-005-002	7/8 - 14 UNC Slotted Nut	1
3	850-001-154	Cone JL69349	1	10	953-001-017	5/32 x 1 1/2 Sq. Cut Cotter Pin	1
4	850-003-053	Hub W/Wear Sleeve (Includes Item 12)	1	11	850-001-155	Dust Cap	1
5	955-001-001	1/8 - 27 NPT Grease Fitting	1	12	850-001-555	Wear Sleeve	1
6	950-011-006	1/2 - 20 UNC x 1\" LG Wheel Bolt	6		79201044	Complete Spindle Assembly	
7	850-001-153	Cone LM67048	1				

HINIKER 4000 SHREDDER

TOUCH UP KIT



DWG. NO. 2520

REF. NO.	PART NUMBER	DESCRIPTION	QTY.	REF. NO.	PART NUMBER	DESCRIPTION	QTY.
1	921-001-191	Quart Gray Paint		2	921-001-199	Gallon Gray Paint	



# SECTION 7 NUMERICAL PART INDEX

# HINIKER 4000 SHREDDER

PART NUMBER	SEC. NO.	PAGE NO.	REF. NO.	PART NUMBER	SEC. NO.	PAGE NO.	REF. NO.	PART NUMBER	SEC. NO.	PAGE NO.	REF. NO.	PART NUMBER	SEC. NO.	PAGE NO.	REF. NO.
000-04067	6	2		400-17205	2	3	8	520-03128	1	6	24	520-03150	1	7	6
000-20179	4	3	1	400-17206	2	3	9	520-03129	1	2	7	520-03150	1	7	5
000-20179	4	5	1	400-17207	2	2	8	520-03129	1	3	12	520-03151	1	7	6
000-20192	4	3	2	400-17208	2	2	2	520-03129	1	5	12	520-03152	1	4	1
000-20192	4	5	2	400-22083	5	5	1	520-03129	1	6	12	520-03154	1	4	12
000-20255	6	4	5	400-27038	4	3	22	520-03130	1	5	11	520-03155	1	4	13
000-24063	4	2	3	400-27039	4	5	22	520-03131	1	4	14	520-03156	1	4	
000-24063	4	5	3	400-34074	4	3	23	520-03131	1	5	17	520-03158	1	2	1
000-24083	4	3	3	400-34074	4	5	23	520-03132	1	4	15	520-03159	1	2	4
000-24090	4	3	4	501-06483	2	3	1	520-03132	1	5	13	520-03159	1	3	4
000-24090	4	5	4	501-06484	2	3	2	520-03132	1	6	6	520-03162	1	2	15
000-24502	6	2	2	501-06485	2	2	1	520-03133	1	4	16	520-03163	1	2	16
000-24556	6	2	1	515-18007	4	3	7	520-03133	1	5	6	520-03164	1	2	17
000-25168	4	5	5	515-18008	4	3	6	520-03133	1	6	8	520-03165	1	2	14
000-28511	4	5	6	51599031	5	3	2	520-03134	1	2	6	520-03166	1	7	5
000-28513	4	5	7	516-15001	4	3	5	520-03134	1	3	9	520-03167	1	7	8
000-64011	4	3	8	517-00206	4	3		520-03134	1	4	17	520-03168	1	7	2
000-64011	4	5	8	517-00206	2	3		520-03134	1	5	20	520-03169	1	4	10
000-65186	4	3	9	517-00206	2	5	24	520-03134	1	6	20	520-03169	1	7	
000-65186	4	5	9	517-00207	2	2		520-03135	1	2	9	520-03170	1	3	1
000-65223	4	3	10	517-00207	4	3	24	520-03135	1	3	14	520-03171	1	3	5
000-65223	4	5	10	517-10158	2	2	3	520-03135	1	4	18	520-03172	1	3	7
000-65411	4	3	11	517-11099	2	3	3	520-03135	1	5	9	520-03173	1	3	10
000-65627	4	5		520-02156	1	5		520-03135	1	6	11	520-03174	1	3	11
000-69096	4	3	82	520-02157	1	2		520-03136	1	2	12	520-03175	1	6	27
000-69096	4	5	82	520-02158	1	4		520-03136	1	3	17	520-03176	1	6	21
030-16041	4	3	12	520-02159	1	3		520-03136	1	4	19	520-03177	1	6	17
030-16041	4	5	12	520-02160	1	6		520-03136	1	5	15	600-02083	2	2	5
031-06113	4	3	13	520-03115	1	5	26	520-03136	1	6	15	600-03029	4	3	25
031-06113	4	5	13	520-03116	1	5	27	520-03137	1	2	8	600-03029	4	5	25
031-06308	6	3	8	520-03117	1	6	26	520-03137	1	3	13	60005052	4	3	26
031-06365	5	3	4	520-03118	1	2	5	520-03137	1	4	20	60005052	4	5	26
031-06459	6	3	5	520-03118	1	3	8	520-03137	1	5	19	601-02075	2	3	6
031-08303	4	3	81	520-03118	1	5	23	520-03137	1	6	19	601-02076	2	2	6
031-10599	5	5	3	520-03118	1	6	23	520-03138	1	2	10	601-02077	2	2	7
033-12013	5	3	6	520-03118	1	7		520-03138	1	3	15	601-03003	2	3	4
033-22007	5	5	5	520-03119	1	5	1	520-03138	1	4	21	601-05001	2	3	5
034-05168	4	3	14	520-03120	1	4	2	520-03138	1	5	10	601-05002	2	3	7
034-05168	4	5	14	520-03120	1	5	2	520-03138	1	6	10	60400524	0	3	27
034-05170	4	3	15	520-03120	1	6	2	520-03139	1	2	11	60400524	4	5	27
034-05170	4	5	15	520-03121	1	4	3	520-03139	1	3	16	60400525	4	3	28
034-05170	6	4	8	520-03121	1	5	3	520-03139	1	4	22	60400525	4	5	28
034-05172	3	3	15	520-03121	1	6	3	520-03139	1	5	16	619719	4	3	29
034-05172	4	3	16	520-03121	1	7	7	520-03139	1	6	16	619719	4	5	29
034-05172	4	5	16	520-03121	1	7	7	520-03140	1	2	13	650-06056	2	3	10
034-05172	6	3	12	520-03122	1	4	4	520-03140	1	3	18	650-06057	2	2	12
034-05173	6	3	11	520-03122	1	5	4	520-03140	1	4	23	650-06058	2	2	4
034-05173	6	4	9	520-03122	1	6	4	520-03140	1	5	18	650-06059	2	2	10
034-06175	3	2	7	520-03123	1	4	5	520-03140	1	5	18	652-28020	2	2	20
034-05175	6	3	10	520-03123	1	5	5	520-03141	1	2	18	652-28021	2	2	21
035-42064	3	3	12	520-03123	1	6	5	520-03141	1	4	24	652-28022	2	2	22
035-42065	3	2	8	520-03124	1	2	3	520-03141	1	5	14	652-28023	2	2	23
035-60063	4	3	19	520-03124	1	3	3	520-03142	1	2	19	652-28024	2	2	19
035-60063	4	5	19	520-03124	1	4	6	520-03142	1	3	19	652-28025	2	2	15
117-010-009	3	3	5	520-03124	1	5	8	520-03142	1	5	25	652-28026	2	2	16
117-010-008	3	3	4	520-03124	1	6	14	520-03142	1	6	13	652-28027	2	2	17
203-50308	2	3	15	520-03125	1	4	7	520-03142	1	6	25	652-28028	2	2	18
203-51074	2	3	14	520-03125	1	5	7	520-03142	1	7	8	652-28029	2	2	24
203-51156	2	3	13	520-03126	1	4	8	520-03143	1	6	1	701-43002	4	3	30
203-51173	2	2	13	520-03126	1	5	21	520-03144	1	6	7	701-43002	4	5	30
203-51174	2	2	25	520-03127	1	3	6	520-03145	1	6	9	702-05093	2	3	11
203-51251	4	3	20	520-03127	1	4	9	520-03146	1	7	1	702-06052	2	2	9
203-51251	4	5	20	520-03127	1	5	22	520-03146	1	7	1	702-06053	2	2	14
203-51254	4	3	21	520-03127	1	6	22	520-03147	1	7	3	702-06054	2	2	11
203-51254	4	5	21	520-03128	1	2	2	520-03147	1	7	2	702-53219	2	3	12
230-026-005	3	3	2	520-03128	1	3	2	520-03148	1	7	4	710-05332	4	3	31
30008667	3	2	7	520-03128	1	4	11	520-03148	1	7	3	710-05332	4	5	31
400-10466	5	3	7	520-03128	1	5	24	520-03149	1	7	4	710-05333	4	3	32

7 CMS

## HINIKER 4000 SHREDDER

PART NUMBER	SEC. NO.	PAGE NO.	REF. NO.	PART NUMBER	SEC. NO.	PAGE NO.	REF. NO.	PART NUMBER	SEC. NO.	PAGE NO.	REF. NO.	PART NUMBER	SEC. NO.	PAGE NO.	REF. NO.
710-05333	4	5	32	79200914	4	5		79201083	3	3	18	950-002-010	4	5	68
710-16110	2	3	17	79200920	4	3	52	79201087	3	2	3	950-002-014	4	3	68
715-02020	4	3	33	79200920	4	5	52	79201098	3	2	10	950-002-014	4	5	67
715-02020	4	5	33	79200923	4	3	53	79201106	5	2	5	950-003-028	4	3	67
715-03056	5	5	6	79200923	4	5	53	79201108	4	2		950-003-028	4	5	66
715-03174	4	3	34	79200928	4	3	54	79201110	4	5		950-003-054	4	5	
715-03174	4	5	34	79200928	4	5	54	79201111	4	5		950-003-054	4	3	45
715-03213	4	3	37	79200935	4	3	55	79201112	4	2		950-003-054	4	5	90
715-04009	5	5	2	79200935	4	5	55	79201120	4	2	90	950-011-006	5	4	10
715-06000	3	3	22	79200938	4	3	56	79201120	4	5	91	950-011-006	6	5	6
715-06000	4	3	35	79200938	4	5	56	79201213	4	3	91	950-011-032	2	3	16
715-06000	4	5	35	79200942	3	2	4	79201215	4	3	91	950-603-054	4	2	
715-06004	3	3	23	79200945	3	2	2	79201216	4	5	92	951-001-002	5	5	4
715-06004	4	3	36	79200955	5	3	1	79201218	4	5	92	951-001-008	5	4	3
715-06004	4	5	36	79200956	5	3		79201220	5	2	4	951-001-009	5	3	8
71503213	4	5	37	79200958	5	2	6	79201221	5	2	5	951-001-022	3	2	11
71504126	4	3	38	79200959	5	2	2	79201350	5	2	3	951-005-002	5	4	13
71504126	4	5	38	79200960	5	2	4	79201389	4	3	64	951-005-002	6	5	9
71504127	4	3	83	79200964	3	3	11	79201389	4	5	64	951-005-003	4	2	
71504127	4	5	83	79200965	3	3	8	79201419	2	3	18	951-005-003	4	3	66
71504128	4	3	88	79200967	4	3	58	802-000-007	5	4	12	951-005-003	4	5	
71504129	4	3		79200967	4	5	58	802-000-007	6	5	8	951-005-003	4	5	65
71504129	4	5	88	79200968	3	3	1	850-001-153	5	4	11	951-005-036	4	3	65
71504130	4	3	39	79200971	4	3	17	850-001-153	6	5	7	951-005-036	4	5	63
71504130	4	5	39	79200973	5	4		850-001-154	5	4	7	951-005-037	5	3	5
71504131	4	3	40	79200976	4	3		850-001-154	6	5	3	951-005-085	5	2	1
71504131	4	5	40	79200977	6	4	3	850-001-155	5	4	15	952-001-004	4	3	
71504132	4	3	87	79200985	4	5		850-001-155	6	5	11	952-001-004	4	5	62
71504132	4	5	87	79200986	4	5	60	850-001-164	5	4	6	952-001-005	4	3	63
71504133	4	3	89	79200987	4	3		850-001-164	6	5	2	952-001-005	5	4	4
71504133	4	5	89	79200988	4	3	60	850-001-309	6	4	4	952-001-006	5	3	9
71504134	4	3	85	79200990	3	3	10	850-001-520	4	5	77	952-002-007	6	3	13
71504134	4	5	85	79200993	3	2	5	850-001-521	4	5	78	952-002-010	3	3	9
71504136	4	3	41	79200993	3	3	17	850-001-555	5	4	17	952-003-003	4	3	18
71504136	4	5	41	79200996	3	2	1	850-001-555	6	5	12	952-003-004	4	3	
71505160	4	3	42	79200997	3	3		850-001-828	5	4	16	952-003-004	4	3	62
71505160	4	5	42	79201005	4	3	64	850-001-828	6	4	12	952-003-004	4	5	61
71505161	4	3	43	79201005	4	5	64	850-003-053	5	4	8	952-003-004	6	4	10
71505161	4	5	43	79201019	4	3	72	850-003-053	6	5	4	952-003-006	4	3	61
71505162	4	3	84	79201020	4	3	73	851-001-032	3	3	3	952-003-006	4	5	59
71505162	4	5	84	79201021	4	3		875-001-123	3	3	6	952-004-067	4	2	62
71505163	4	3	86	79201022	4	3		890-001-009	3	3	7	953-001-002	4	3	59
71505163	4	5	86	79201023	6	4	2	921-001-191	6	6	1	953-001-002	4	5	17
720-02399	4	3	44	79201028	6	5	1	921-001-199	6	6	2	953-001-010	4	3	78
720-02399	4	5	44	79201033	4	5	72	950-001-023	3	3	16	953-001-010	4	5	18
725-03047	5	3	3	79201034	4	5	73	950-001-023	5	4	5	953-001-017	5	4	14
790-41218	5	5		79201035	4	5		950-001-024	4	4	71	953-001-017	6	5	10
79200810	3	2	3	79201036	4	5		950-001-029	6	3	7	953-002-021	3	3	20
79200825	4	3	46	79201037	4	3		950-001-031	6	3	6	953-005-001	3	3	21
79200825	4	5	46	79201037	4	5	74	950-001-087	4	2		954-001-012	6	2	3
79200826	4	3	47	79201038	4	3	75	950-001-111	4	3		955-001-001	5	4	9
79200826	4	5	47	79201038	4	5	75	950-001-111	4	5	81	955-001-001	6	5	5
79200827	5	4	2	79201039	4	3	76	950-001-112	4	3	80				
79200828	5	4	1	79201039	4	5	76	950-001-112	4	5	80				
79200836	4	3	48	79201040	6	4	1	950-001-124	4	2	79				
79200836	4	5	48	79201041	4	3	74	950-001-124	4	5					
79200860	4	3	49	79201042	5	2	5	950-001-132	6	3	9				
79200860	4	5	49	79201044	6	4	11	950-001-142	4	3	79				
79200866	4	3	50	79201044	6	5		950-001-142	4	5	79				
79200866	4	5	50	79201055	6	3	1	950-001-147	3	3	16				
79200869	3	2	12	79201056	6	3	2	950-001-147	4	3	77				
79200871	3	2	10	79201059	6	3	4	950-001-147	4	5	71				
79200872	3	2		79201063	6	3	3	950-001-166	6	4	7				
79200880	3	3	13	79201065	6	3		950-001-215	3	2	6				
79200881	3	3	14	79201071	4	5	11	950-001-259	6	4	6				
79200911	4	3		79201072	4	5	45	950-002-009	4	3	71				
79200912	4	3	51	79201079	3	2	9	950-002-009	4	5	70				
79200913	4	5	51	79201081	3	3	19	950-002-010	4	3	70				



