

# HINIKER ROW CULTIVATOR SERIES 1000 INDEX

SECTION 1	RIGID SERIES ROW CULTIVATOR
SECTION 2	FOLDING SERIES ROW CULTIVATOR
SECTION 3	HYDRAULICS
SECTION 4	COMPONENT PARTS BREAKDOWN
SECTION 5	OPTIONAL EQUIPMENT

# PARTS

FN -#177ps

It is the policy of Hiniker Company to constantly improve its products whenever it is practical to do so.

Hiniker Company must therefore reserve the right to redesign or change its equipment or component parts thereof without incurring the obligation to install or furnish such changes on equipment previously delivered.

## INSTRUCTIONS FOR ORDERING PARTS

1. The item numbers in the illustrations correspond to the same item numbers in the description list. An assembly having a part number can be ordered. All other parts must be ordered individually. The quantity in the "number required" column is the number of parts used in this area of the machine. The term "A/R" for number required indicates "as required" where the quantity may vary. Order all parts by their number and name. Do not use the item number.
2. All references to left and right, front and rear apply to the machine as viewed from the rear of direction of travel.
3. Always mention the identification number of the code and serial numbers found on the name plate of the unit on which the part is to be used. Much delay and confusion can be avoided when correct numbers are specified on parts order and correspondence.
4. Owners, order all parts through your local dealer.

5. Dealers must indicate how to ship; whether by truck, rail freight, express, or parcel post.
6. Collect phone calls will not be accepted.
7. Address all orders for parts as follows:

HINIKER COMPANY  
AIRPORT ROAD  
P.O. BOX 3407  
MANKATO, MN 56002-3407

PHONE: (507) 625-6621

## INSTRUCTIONS FOR RETURNING PART FOR ADJUSTMENT

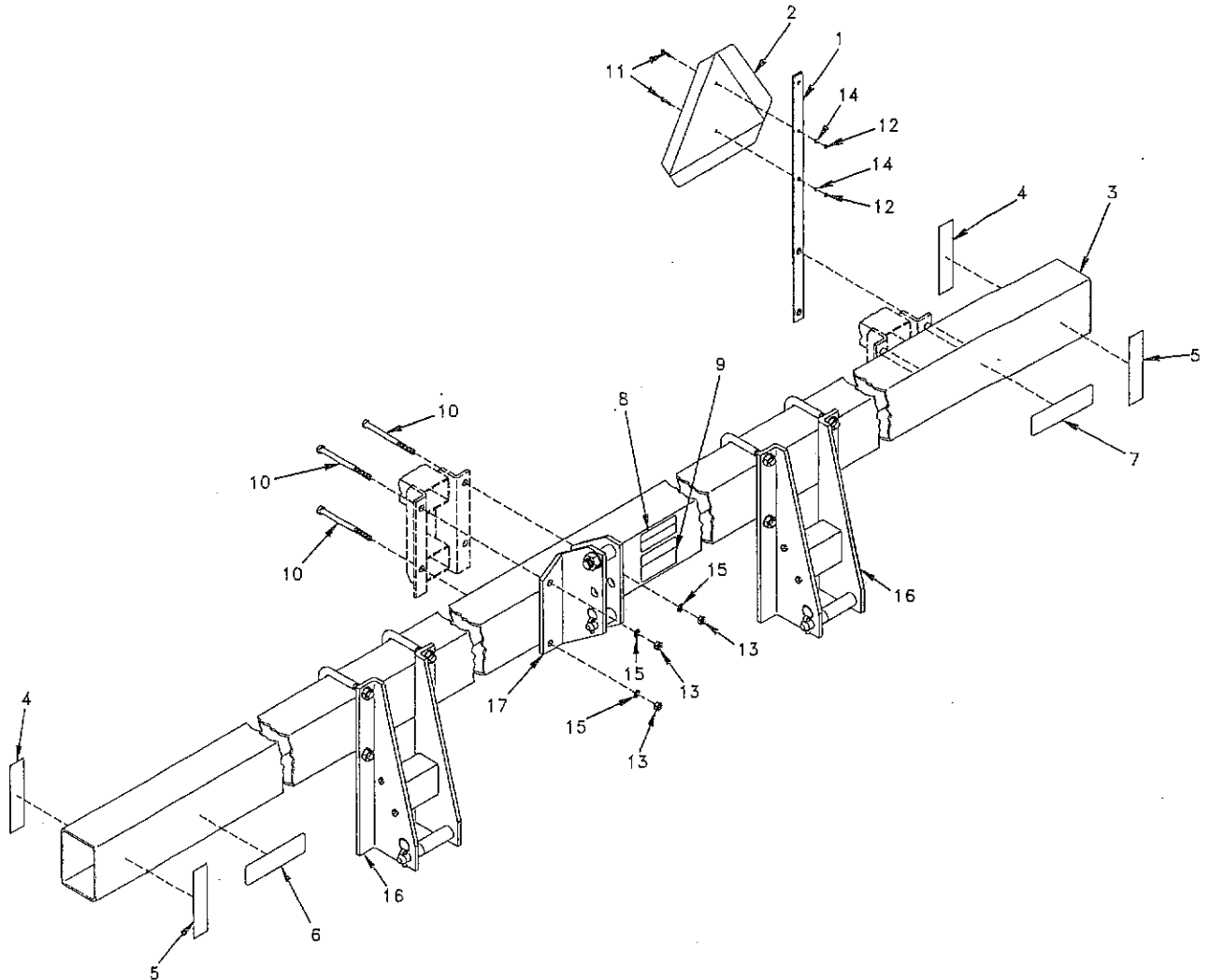
1. To assure prompt handling of claims, your dealer or distributor should follow standard claim and forward claim within thirty (30) days, of any part failure or malfunction believed to be a warranty claim, to Hiniker Company claims department for processing.
2. No returned part will be accepted unless they are transportation prepaid and accompanied by the packing list copy of the returned goods authorization form, or the packing list copy of the warranty claim form.
3. Parts returned should have a tag attached with sender's name and address clearly printed.

# SECTION 1 RIGID SERIES ROW CULTIVATOR

PAGE 2	RIGID TOOLBAR	4 ROW 36/38 INCH
	SERIES 1000	6 ROW 30 INCH
		6 ROW 36/38 INCH
		8 ROW 30 INCH
		8 ROW 36/38 INCH
PAGE 3	RIGID TOOLBAR	12 ROW 20/22 INCH
	SERIES 1000	12 ROW 24 INCH

SERIES 1000 ROW CULTIVATOR

RIGID TOOLBAR SERIES 1000



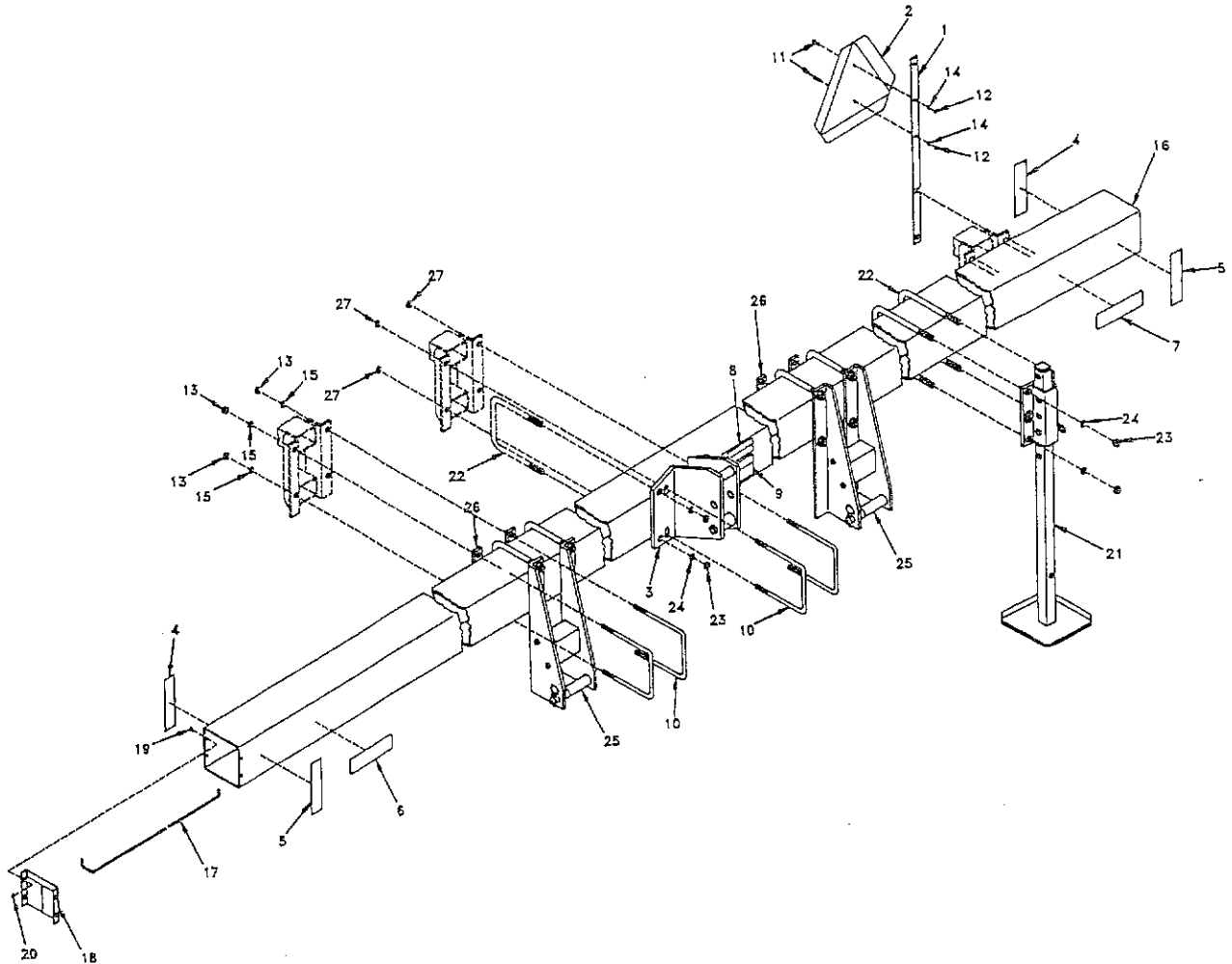
DWG. NO. 3224

REF. NO.	PART NUMBER	DESCRIPTION	QTY.	REF. NO.	PART NUMBER	DESCRIPTION	QTY.
1	815-001-004	SMV Mount Strap	1	8	850-002-426	Caution Decal	1
2	850-001-354	SMV Sign	1	9	810-001-821	Notice Decal	1
3	81003211	Toolbar, 168 Inch (4 Row 36/38)	1	10	950-001-143	5/8 - 11 UNC x 7 HHCS GR. 5 5 x 7 Toolbar	4
	81003030	Toolbar, 196 Inch (6Row 30)	1		950-001-227	5/8 - 11 UNC x 9 HHCS GR. 5 7 x 7 Toolbar	4
	81003012	Toolbar, 244 Inch (6 Row 36/38)	1	11	950-001-003	HHCS, 1/4 - 20 UNC x 1" GR. 2	2
	81003025	Toolbar, 256 Inch (8row 30)	1	12	951-001-003	Hex Nut, 1/4 - 20 UNC	2
	81003210	Toolbar, 320 inch (8 Row 36/38)	1	13	951-001-008	Hex Nut, 5/8 - 11 UNC	4
4	850-001-305	Red Reflective Tape	2	14	952-001-001	Lockwasher, 1/4 Inch	2
5	850-001-285	Yellow Reflective Tape	2	15	952-001-005	Lockwasher, 5/8 Inch	4
6	81003192	"1000" Decal	1	16	81003094	Lower Hitch Assembly 5 x 7 Toolbar (See Section 4 Page 8)	2
7	81003191	"Hiniker" Decal	1	17	81003257	Upper Hitch Assembly 5x 7 Toolbar (See Section 4 Page 8)	1

# SERIES 1000 ROW CULTIVATOR

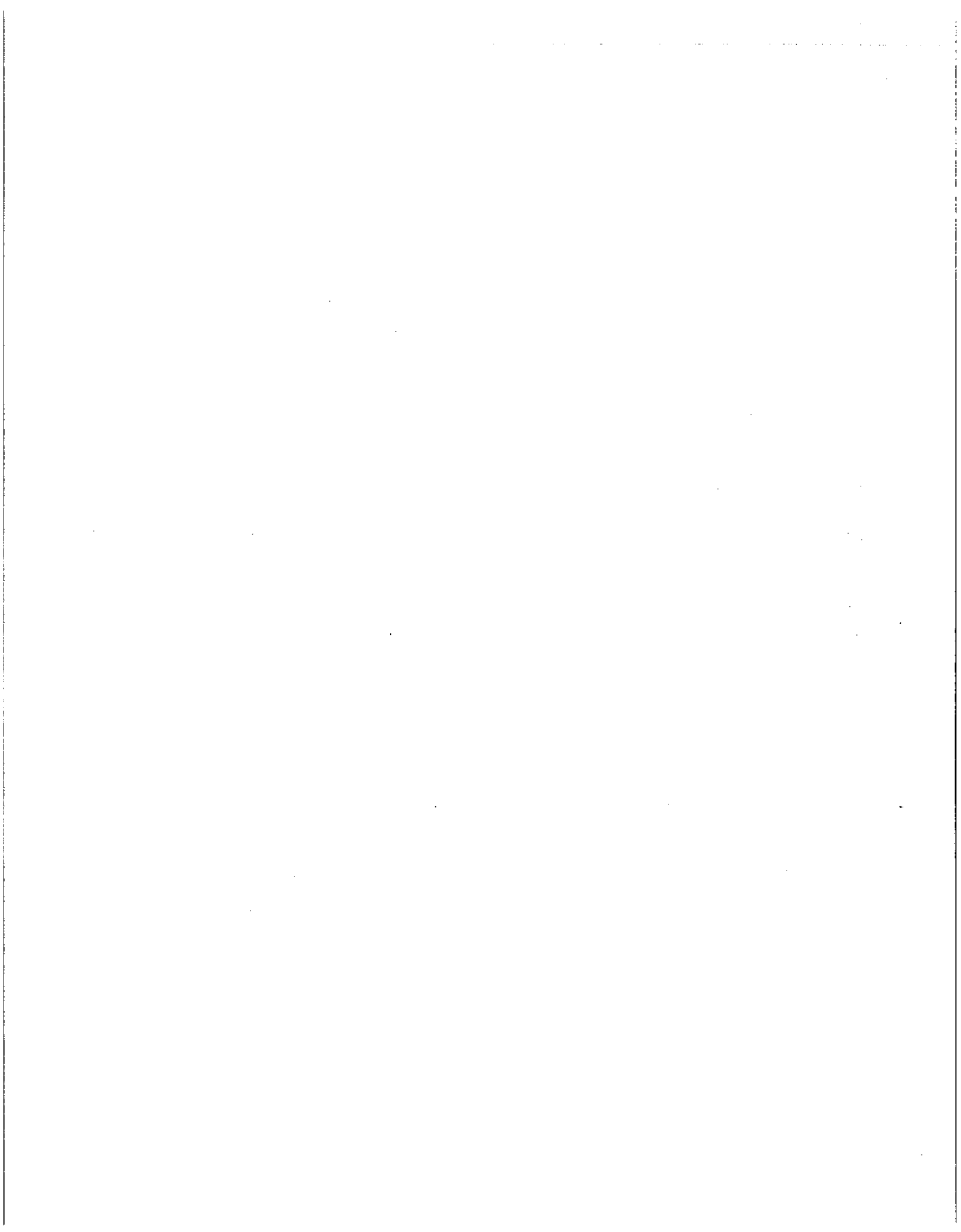
## RIGID TOOLBAR SERIES 1000

### SERIES 1000 12 ROW 22"



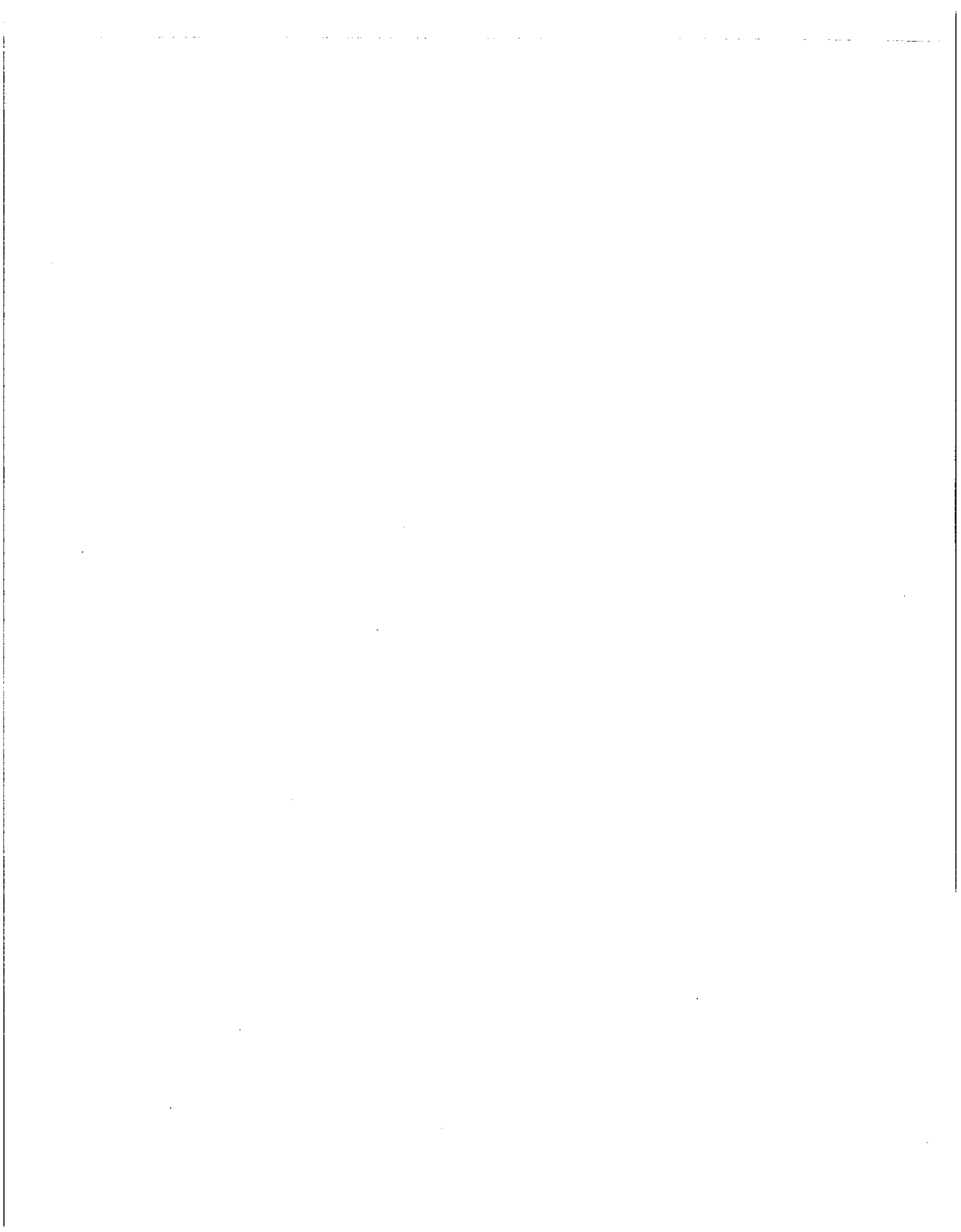
DWG. NO. 3469

REF. NO.	PART NUMBER	DESCRIPTION	QTY.	REF. NO.	PART NUMBER	DESCRIPTION	QTY.
1	815-001-004	SMV Mount Strap	1	16	81003311	Toolbar, 282 inch (12 Row 20/22)	1
2	850-001-354	SMV Sign	1		81003281	Toolbar, 304 inch (12 Row 12/24)	1
3	81003258	Upper Hitch Assembly 7 x 7 toolbar (See Sec. 4 Page 9)	1	17	810-001-475	Block Removing Rod	1
4	850-001-305	Red Reflective Tape	1	18	810-001-284	End Plate	2
5	850-001-285	Yellow Reflective Tape	1	19	950-002-006	Bolt - HHFL Wzlk. 5/16 - 18 x 3/4	8
6	81003192	"1000" Decal	1	20	951-002-002	Nut - FL Wzlk. 5/16 - 18	8
7	81003191	"Hiniker" Decal	1	21	810-001-920	Parking Stand Assembly (See Sec. 4 Page 7) (includes Items 22, 23, 24)	2
8	850-002-426	Caution Decal	2	22	875-001-038	U-Bolt 3/4 (Fits 7 x 7)	6
9	810-001-821	Notice Decal	2	23	951-001-009	Hex Nut 3/4 - 10 UNC	12
10	805-001-332	5/8 U-Bolt	2	24	952-001-006	Lockwasher 3/4	12
11	950-001-003	HHCS 1/4 - 20 UNC x 1" GR. 2	2	25	81003246	Lower Hitch Assembly 7 x 7 Toolbar (Ref. Only See Section 4 Page 9)	2
12	951-001-003	Hex Nut 1/4 - 20 UNC	1	26	81004186	Spacer Strap	4
13	951-001-008	Hex Nut, 5/8 - 11 UNC	4	27	951-005-044	Locknut 5/8 2-Way	4
14	952-001-001	Lockwasher, 1/4 Inch	2				
15	952-001-005	Lockwasher, 5/8 Inch	4				



# SECTION 2 FOLDING SERIES ROW CULTIVATOR

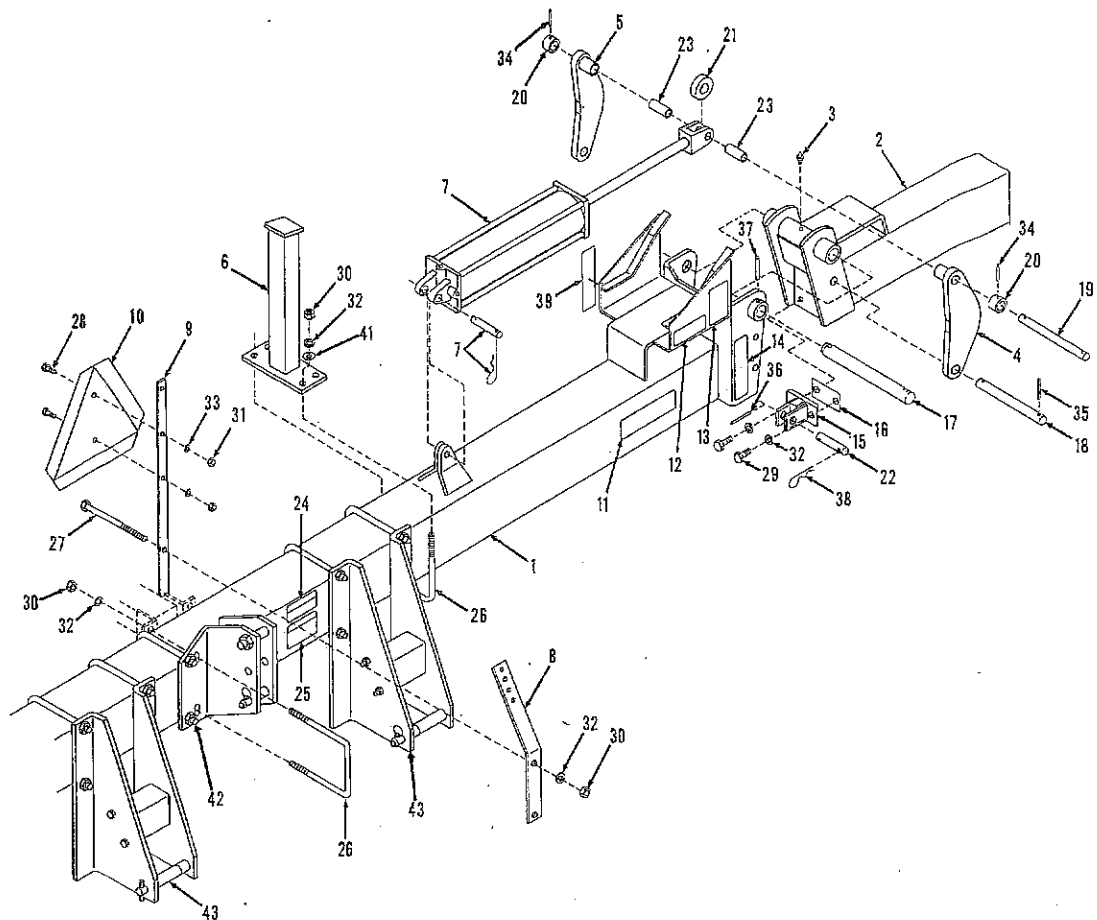
PAGE 2	FOLDING TOOLBAR	8 ROW 30 INCH
	SERIES 1000	8 ROW 36/38 INCH
		12 ROW 30 INCH
		16 ROW 30 INCH
PAGE 3-4	FOLDING TOOLBAR	16 & 18 ROW 20/22 INCH
	SERIES 1000	
PAGE 5-6	FOLDING TOOLBAR	24 ROW 20/22 INCH
	SERIES 1000	





# SERIES 1000 ROW CULTIVATOR

## FOLDING TOOLBAR SERIES 1000



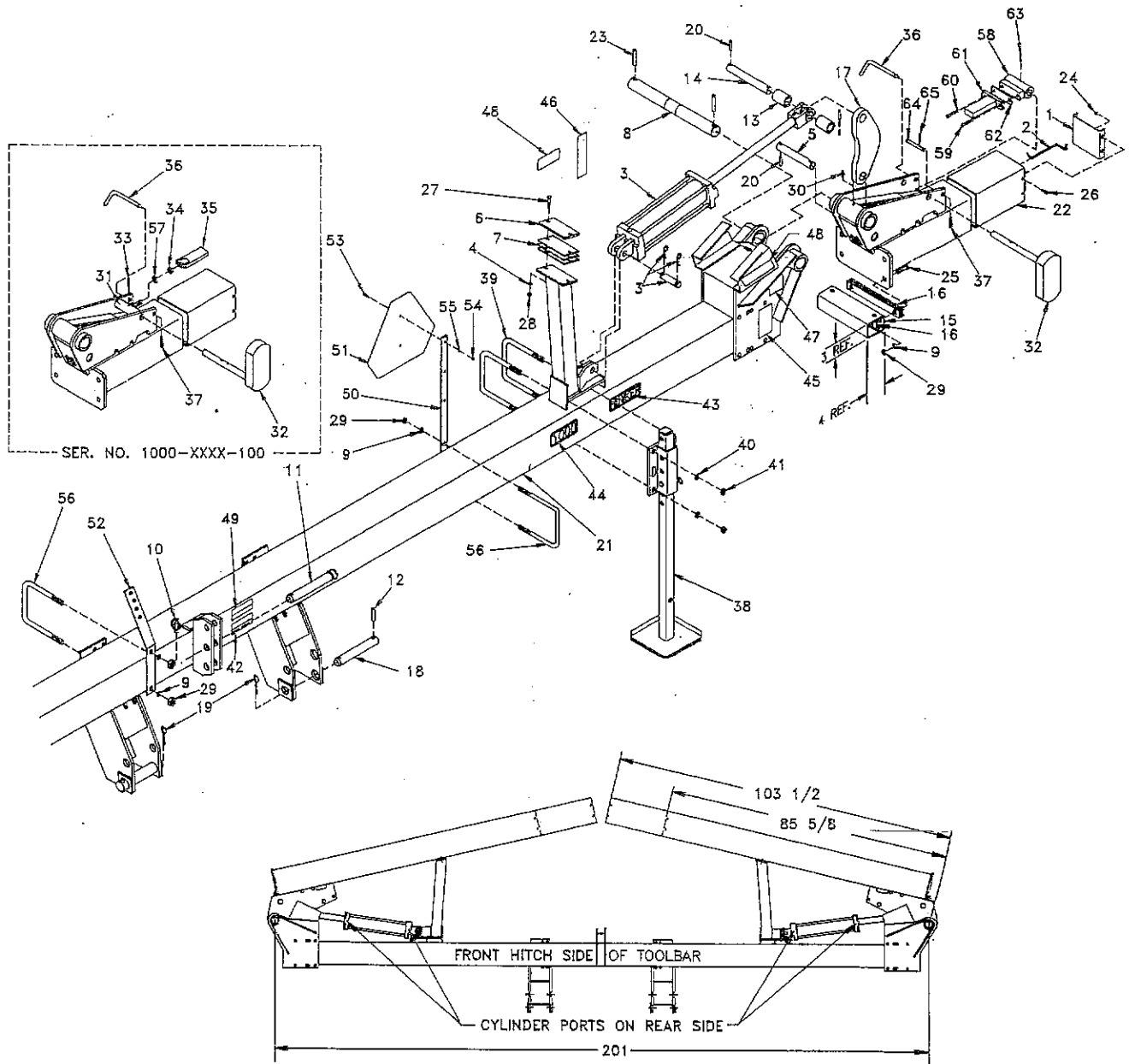
DWG. NO. 2406

REF. NO.	PART NUMBER	DESCRIPTION	QTY.	REF. NO.	PART NUMBER	DESCRIPTION	QTY.
1	81003224	Center Frame Weld (8 Row 30)	1	18	81003133	Link Pin	2
	81003221	Center Frame Weld (8 Row 36/38)	1	19	81003167	Link Pin (8 & 12 Row)	2
	81003164	Center Frame Weld (12 Row 30)	1		81003209	Link Pin (16 Row)	2
	81003227	Center Frame Weld (16 Row 30)	1	20	81003138	Roller (8 & 12 Row)	2
2	81003226	Wing Weld (8 Row 30)	2	21	850-001-205	Roller (8 & 12 Row)	4
	81003220	Wing Weld (8 Row 36/38)	2		810-001-255	Roller (16 Row)	2
	81003127	Wing Weld (12 Row 30)	2	22	850-001-200	Hinge Pin	2
	81003222	Wing Weld (16 Row 30)	2	23	81003169	Tube (8 & 12 Row Only)	2
3	955-001-001	Grease Fitting, 1/8 - 27 NPT	2	24	850-002-426	Caution Decal	4
4	81003112	LH Link Weld	2	25	810-001-821	Notice Decal	1
5	81003111	RH Link Weld	2	26	805-001-332	U-Bolt, 5/8 - 11 UNC x 7 5/8 Center	1
6	81003108	Stand Weld	2	27	950-001-181	HHCS, 5/8 - 11 UNC x 8 1/2 GR. 5	6
7	81002580	3.50 Diameter x 16 Inch Stroke Cylinder (See Section 3B, Page 4)	2	28	950-001-003	HHCS, 1/4 - 20 UNC x 1" GR. 2	2
	81002579	4.00 Diameter x 16 Inch Stroke Cylinder (See Section 3B, Page 4)	2	29	950-001-087	HHCS, 5/8 - 11 UNC x 1 1/2 GR. 5	2
	81004342	4.00 Diameter x 16 Inch Stroke Cylinder (See Section 3B, Page 5)	1	30	951-001-008	Hex Nut, 5/8 - 11 UNC	4
8	805-001-784	30° Bulkhead Plate	1	31	951-001-003	Hex Nut, 1/4 - 20 UNC	14
9	815-001-004	SMV Mount Strap	1	32	952-001-005	Lockwasher, 5/8 Inch	2
10	850-001-354	SMV Sign	1	33	952-001-001	Lockwasher, 1/4 Inch	14
11	81003191	"Hiniker" Decal	4	34	953-003-017	Spring Pin, 5/16 x 2 Long	2
12	850-001-980	Warning Decal	2	35	953-006-008	Coil Spring Pin, 5/16 x 2 1/4 Long	4
13	850-001-306	Warning Decal	2	36	953-003-023	Spring Pin, 5/16 x 3 Long	4
14	850-001-285	Yellow Reflective Tape	2	37	953-003-023	Spring Pin, 1/2 x 2 3/4 Long	2
15	81003120	Lock Weld	4	38	953-005-002	Hair Pin Cotter, .178 x 3 9/16 Long	2
16	81003168	Shim	2	39	850-001-305	Red Reflective Tape	2
17	810-002-155	Hinge Pin	2	40	81003192	"1000" Decal (Not Shown - Same Position As Item 11 But Other End)	2
				41	952-002-007	Flat Washer, 5/8 Inch	1
				42	81003246	Upper Hitch Assembly 7 x 7 (See Sec. 4 Page 9)	8
				43	81003246	Lower Hitch Assembly 7 x 7 (See Sec. 4 Page 9)	1

# SERIES 1000 ROW CULTIVATOR

16 & 18 ROW 20/22 INCH

20ms



**SERIES 1000 ROW CULTIVATOR**

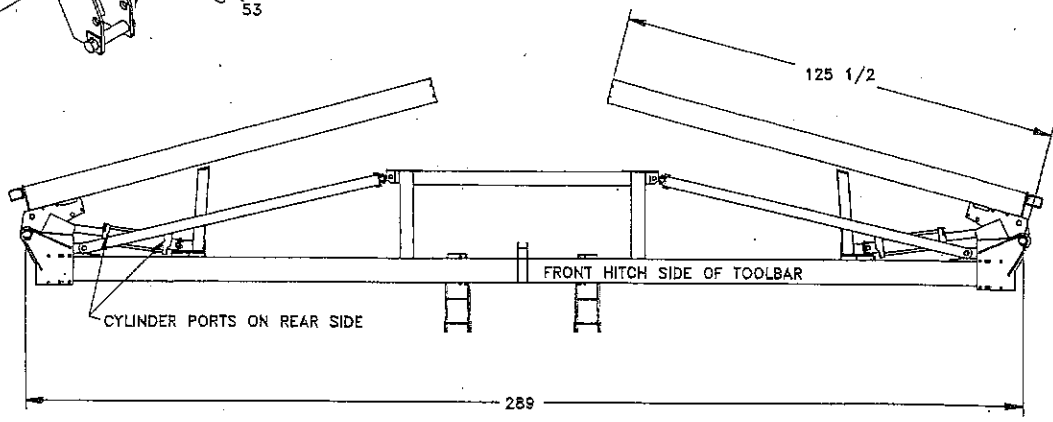
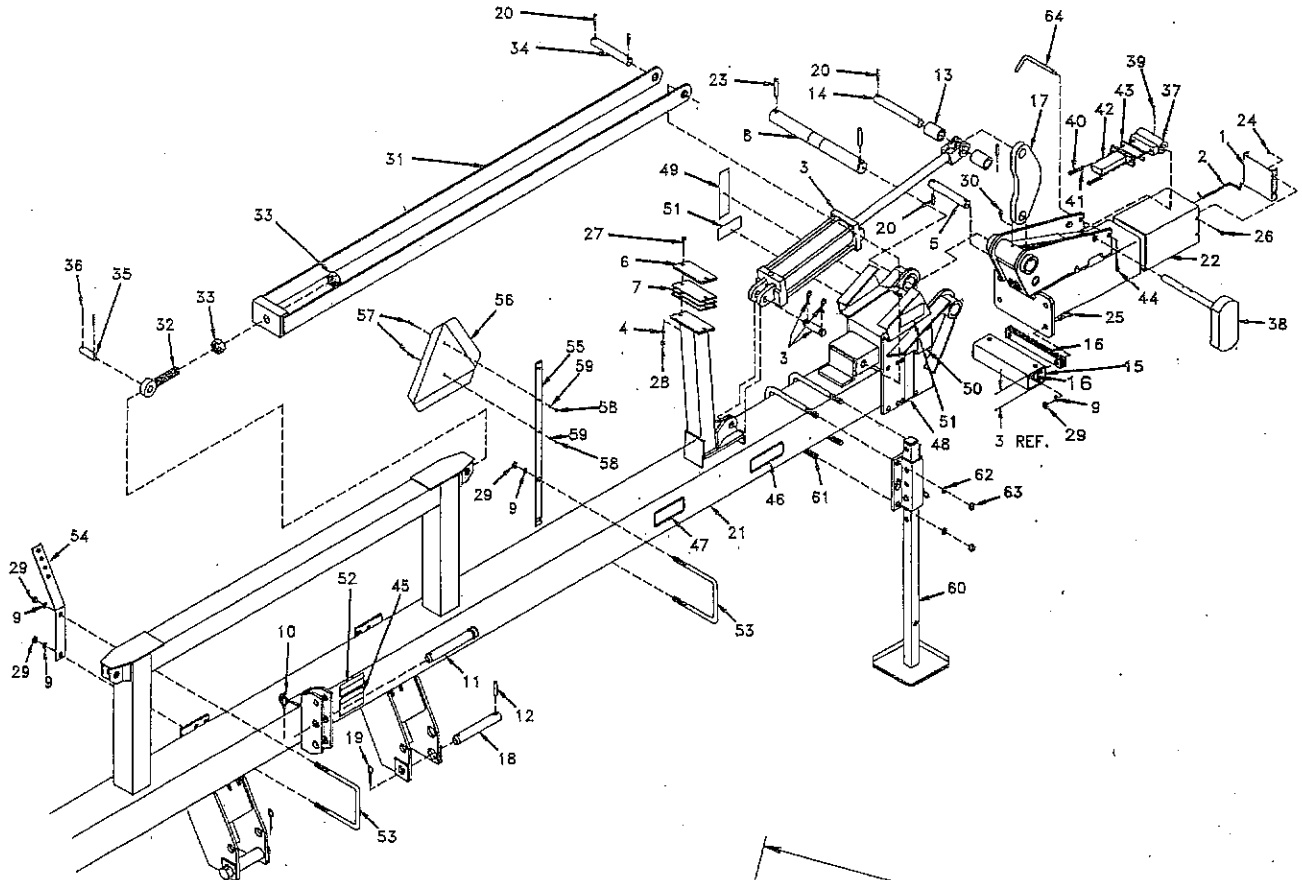
REF. NO.	PART NUMBER	DESCRIPTION	QTY.	REF. NO.	PART NUMBER	DESCRIPTION	QTY.
1	810-001-284	End Plate	2	33	953-003-006	Spring Pin 1/4 X 1 1/2 (Serial No. 1000-xxxx-100)	2
2	810-001-475	Block Removing Rod	1	34	951-001-009	Hex Nut 3/4 - 10 (Serial No. 1000-xxxx-100 Only)	2
3	81004342	Cyl Assy 4 x 16 (See Sec. 3B Page 5)	2	35	81004284	Latch Weld (Serial No. 1000-xxxx-100 Only)	2
4	952-001-007	Lock Washer 3/8 Medium Split SAE	4	36	81003042	Pin	2
5	81004234	Pin	2	37	953-005-001	Pin - Hair Cotter .120 x 2 3/8	2
6	81004235	Rubber Cushion	2	38	810-001-920	Parking Stand Assy (Includes Items '39, 40, 41) (See Sect. 4 Pg. 7)	2
7	81004236	Stand Shim	6	39	875-001-038	U-Bolt Plated	2
8	81004406	Hinge Pin	2	40	952-001-006	Lock Washer 3/4 medium Split SAE	2
9	952-001-005	Lock Washer 5/8 Medium Split SAE	8	41	951-001-009	Hex Nut 3/4 - 10	2
10	81004481	Linch Pin	1	42	810-001-821	Notice Decal	1
11	81004482	Top Link Pin	1	43	81003191	Hinker Decal	1
12	953-003-002	Spring Pin 1/2 x 2 1/2	2	44	81003192	1000 Decal	1
13	81004289	Roller	4	45	850-001-285	Tape - Yellow Reflector	2
14	81004290	Pin	2	46	850-001-305	Tape - Red Reflector	2
15	81004296	Stop	2	47	850-001-306	Decal Lift Cylinder	2
16	81004297	Shim	10	48	850-001-980	Decal - Warning	4
17	81004298	Lift Link	2	49	850-002-426	Decal Caution	2
18	81004300	Lower Hitch Pin	2	50	851-001-004	SMV Mount Strap	1
19	81004301	clinch Pin	2	51	850-001-354	SMV Sign	1
20	953-003-009	Spring Pin 3/8 x 1 3/4	8	52	805-001-754	30 Degree Bulkhead Plate	1
21	81003318	Center Toolbar Weld 18 row (20/22)	1	53	950-001-003	HCS 1/4 - 20 x 1 Gr. 2	2
22	81003335	Wing Toolbar Weld 16/22"	2	54	951-001-003	Hex Nut 1/4 - 20	2
	81003300	Wing Toolbar Weld 18/22"	2	55	952-001-001	Lock Washer 1/4 Med. Split SAE	2
23	953-003-030	Spring Pin 1/2 x 3	4	56	805-001-332	U-Bolt	2
24	951-002-002	Flat Whiz Lock Nut 5/16 - 18	8	57	952-004-003	Mach. Bushing 25832 x 1 1/4 x .075	4
25	950-001-185	Hex Head Cap Screw 5/8 - 11 x 2 1/4 Gr. 5	4	58	81004700	Tube Weld	2
26	950-002-006	Hex Head Flat Whiz Bolt 5/16 - 18	8	59	950-001-108	Hex Bolt 3/8 - 16 NC x 1 1/2	4
27	950-003-009	Carriage bolt 3/8 - 16 x 1 3/4 Gr. 2	4	60	952-001-007	Lock Washer 3/8	4
28	951-001-005	Hex Nut 3/8 - 16	4	61	81004697	Lock Bar Weld	2
29	951-001-008	Hex Nut 5/8 - 11	8	62	81004695	Shim	A/R
30	955-001-001	Grease Fitting 1/8 - 27 NPT	2	63	701-30022	Spring Pin 3/16 x 2	2
31	81004251	Pivot Weld (Serial Number 1000-xxxx-100 Only)	2	64	953-002-011	1/2 x 3 1/2 Adjustabe Clevis Pin (Used on Serial No. 1000-xxxx-100)	2
32	81004287	Weight Weld	2	65	953-003-029	Spring Pin 5/32 x 1 1/4 (Used On Serial No. 1000-xxxx-100)	2

**SECS 2**

SERIES 1000 ROW CULTIVATOR

24 ROW 20/22

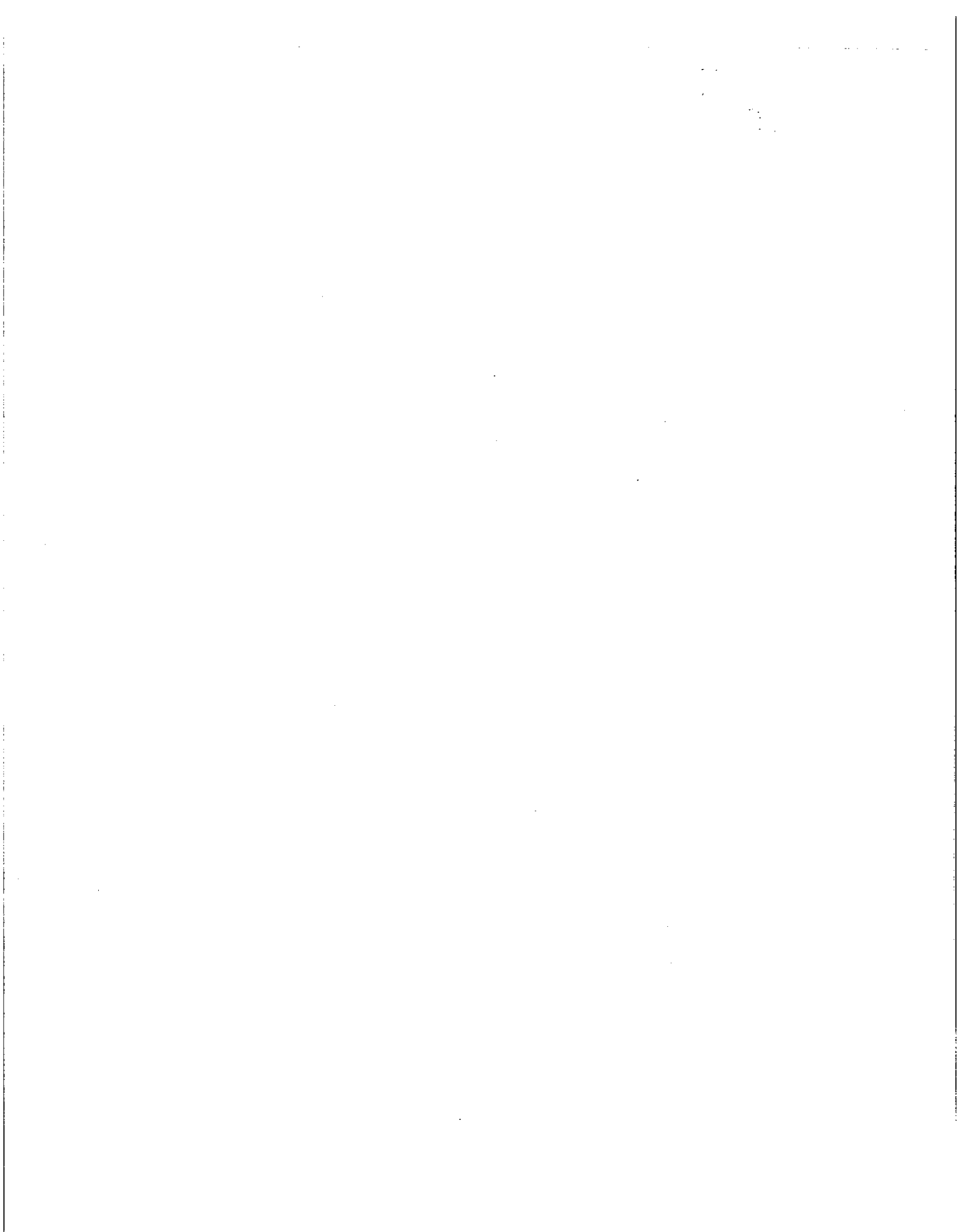
SECTION  
2



**SERIES 1000 ROW CULTIVATOR**

REF. NO.	PART NUMBER	DESCRIPTION	QTY.	REF. NO.	PART NUMBER	DESCRIPTION	QTY.
1	810-001-284	End Plate	2	33	951-001-022	Hex Nut 1 1/4 - 7	4
2	810-001-475	Block Removing Rod	1	34	81004302	Pin	2
3	81002581	Cyl Assy 5" x 16" (See Sec. 3B Page 5)	2	35	865-001-042	Control Arm Link Pin	2
4	952-001-007	Lock Washer 3/8 Inch	4	36	953-003-003	Spring Pin 1/4 x 1 3/4	4
5	81004234	Pin	2	37	81004700	Tube Weld	2
6	81004235	Rubber Cushion	2	38	81004702	Weight Weld	2
7	81004236	Stand Shim	6	39	701-30022	Spring Pin 3/16 x 2	2
8	81004406	Hinge Pin	2	40	950-001-108	Hex Bolt 3/4 - 16 NC x 1 1/2	4
9	952-001-005	Lock Washer 5/8 Inch	8	41	952-001-007	Lock Washer 3/8	4
10	81004481	Linch Pin	1	42	81004697	Lock Bar Weld	2
11	81004482	Top Link Pin	1	43	81004695	Shim	A/R
12	953-003-002	Spring Pin 1/2 x 2 1/2	2	44	953-005-001	Hair Pin Cotter .120 x 2 3/8	2
13	81004289	Roller	4	45	810-001-821	Notice Decal	1
14	81004290	Pin	2	46	81003191	Hiniker Decal	1
15	81004296	Stop	2	47	81003192	1000 Decal	1
16	81004297	Shim	10	48	850-001-285	Tape - Yellow Reflector	2
17	81004298	Lift Link	2	49	850-001-305	Tape - Red Reflector	2
18	81004300	Lower Hitch Pin	2	50	850-001-306	Decal Lift Cylinder	2
19	81004301	Clinch Pin	2	51	850-001-980	Decal - Warning	4
20	953-003-009	Spring Pin 3/8 x 1 3/4	12	52	850-002-426	Decal - Caution	1
21	81003319	Center Toolbar Weld 24 row (20/22)	1	53	805-001-332	U-Bolt 5/8 Fits 7 x 7	2
22	81003317	Wing Toolbar Weld 24/22	2	54	805-001-784	30° Bulk Head Plate	1
23	953-003-030	Spring Pin 1/2 x 3	4	55	815-001-004	SMV Mount Strap	1
24	951-002-002	HHFL Wzlk Nut 5/16 - 18	8	56	850-001-354	SMV Sign	1
25	950-001-185	HHCS 5/8 - 11 x 2 1/4 Gr. 5	4	57	950-001-003	Hex Head Cap Screw 1/2 - 20 UNC x 1	2
26	950-002-006	HHFL Wzlk Bolt 5/16 - 18	8	58	951-001-003	Hex Nut 1/4	2
27	950-003-009	Carr. bolt 3/8 - 16 x 1 3/4 Gr. 2	4	59	952-001-001	Lock Washer 1/4	2
28	951-001-005	Hex Nut 3/8 - 16	4	60	810-001-920	Parking Stand Assy (Items 61, 62, 63 Included Sec. 4 Page 7)	2
29	951-001-008	Hex Nut 5/8 - 11	9				
30	955-001-001	Grease Fitting 1/8 - 27 NPT	2	61	975-001-038	U-Bolt 3/4 Fits 7 x 7	2
31	81004257	Strap Weld	2	62	952-001-006	Lock Washer 3/4	4
32	850-002-503	Bolt Eye 1 1/4 - 7	2	63	951-001-009	Hex Nut 3/4	4
				64	81003042	Pin	2

**2 CMS**



# SECTION 3 HYDRAULICS

## SECTION 3A RIGID AND FOLDING SERIES

- PAGE 2 PLUMBING DIAGRAM 170 DEGREE WING LIFT  
8 ROW 30, 8 ROW 36/38, 12 ROW 30, 12 ROW 36/38, 16 ROW 30
- PAGE 3 PLUMBING DIAGRAM  
16 ROW 20/22, 18 ROW 20/22, 24 ROW 20/22

## SECTION 3B CYLINDERS

- PAGE 4 PRINCE 3.5 INCH DIAMETER X 16 INCH STROKE
- PAGE 4 PRINCE 4.0 INCH DIAMETER X 16 INCH STROKE 1991-94
- PAGE 5 PRINCE 4.0 INCH DIAMETER X 16 INCH STROKE 1994-
- PAGE 5 PRINCE 5.0 INCH DIAMETER X 16 INCH STROKE
- PAGE 6 PRINCE 3.0 INCH DIAMETER X 8 INCH STROKE

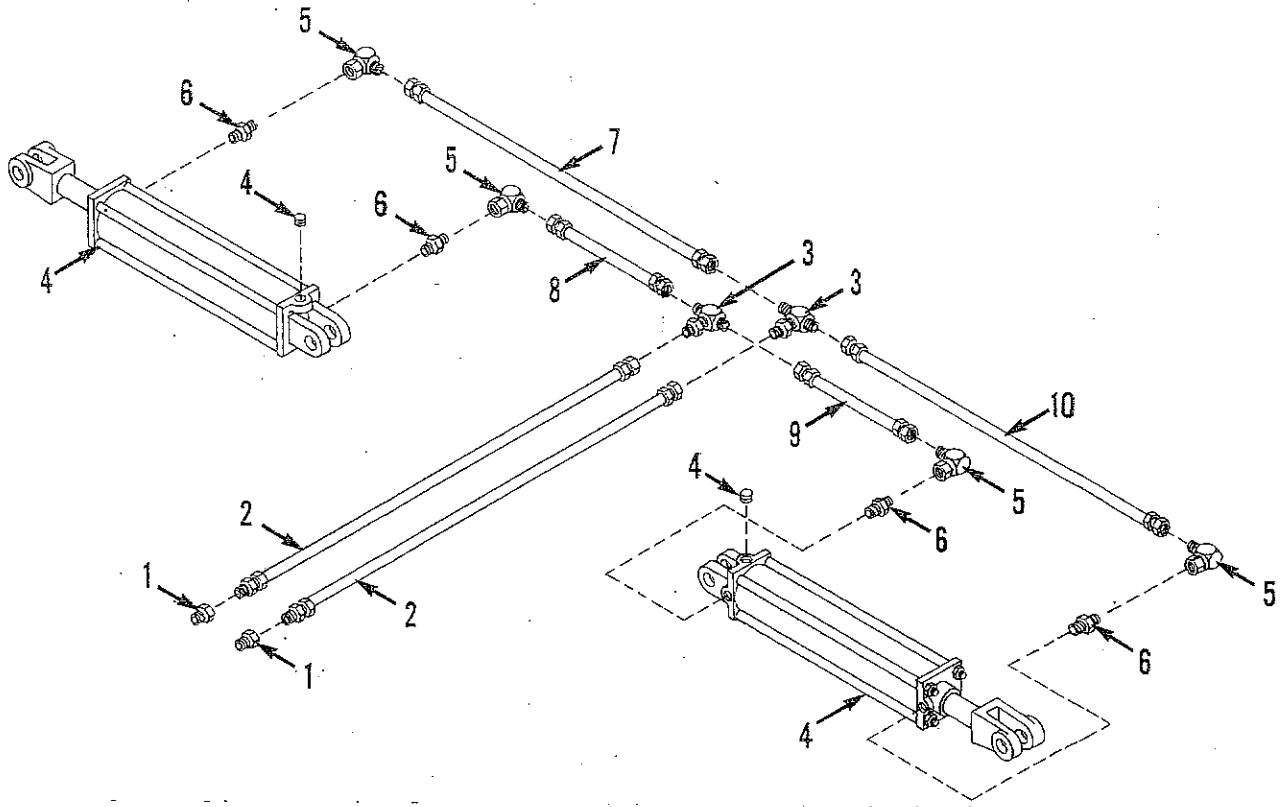
# SERIES 1000 ROW CULTIVATOR

## WING LIFT FOLDING TOOLBAR

Models

- 8 Row 30"
- 8 Row 36/38"
- 12 Row 30"
- 12 Row 36/38"
- 16 Row 30"

SECTION 3A



DWG. NO. 2539

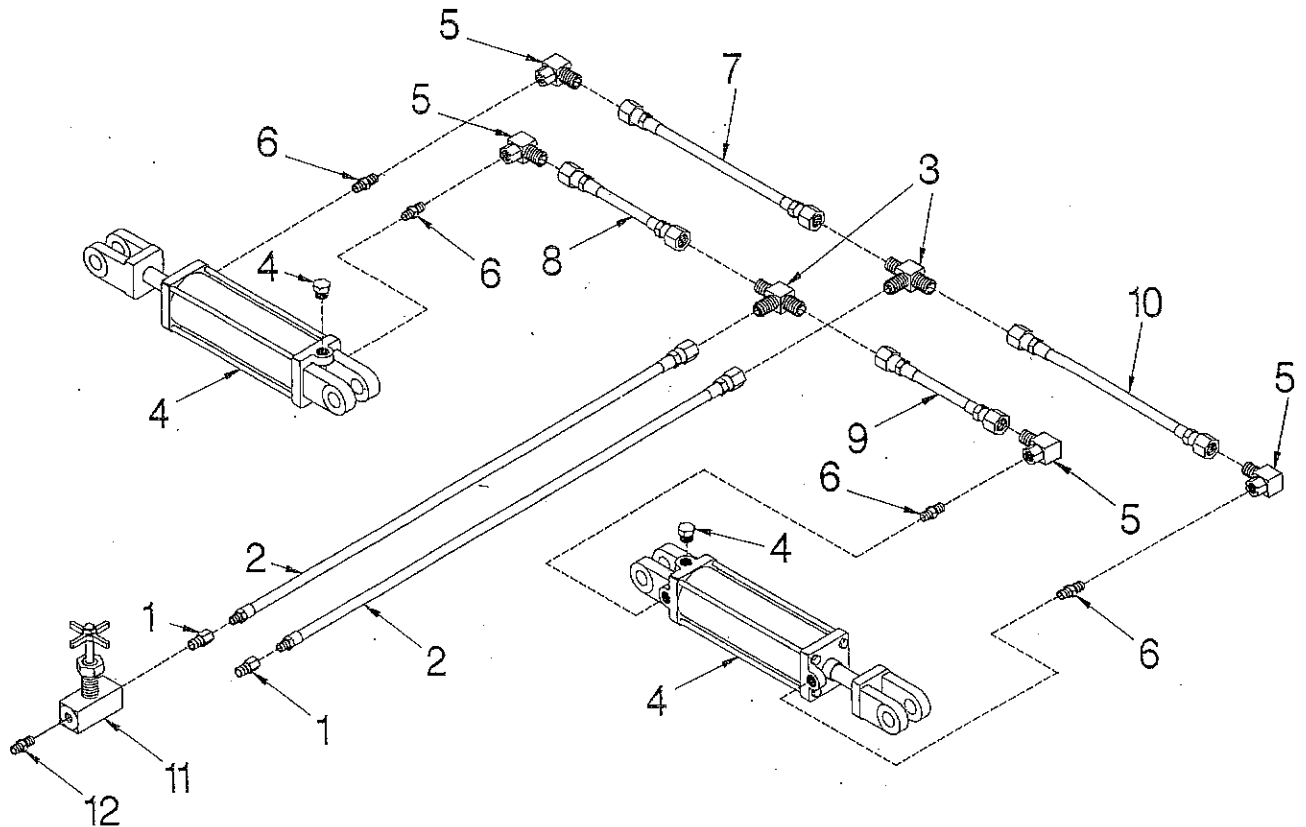
REF. NO.	PART NUMBER	DESCRIPTION	QTY.	REF. NO.	PART NUMBER	DESCRIPTION	QTY.
1	956-004-002	Reducer Bushing, 1/2 - 14 Male NPT To 3/8 - 18 Female NPT	2	8	951-001-004	3/8 x 29 Inch Long Hose Assembly (8 Row 30)	1
2	957-002-014	3/8 x 48 Inch Long Hose Assembly	2	957-002-014	3/8 x 48 Inch Long Hose Assembly (12 Row 36/38)	1	
3	956-007-003	Bulkhead Tee, 9/16 - 18 Male 37° JIC To 9/16 - 18 Male 37° JIC	2	957-001-009	3/8 x 50 Inch Long Hose Assembly (8 Row 36/38)	1	
4	81002579	4.00 Inch Diameter x 16 Inch Stroke Cylinder (16 Row 30) 1991-1994	2	957-001-014	3/8 x 60 Inch Long Hose Assembly (12 Row 30)	1	
	81004342	4.00 Inch Diameter X 16 Inch Stroke Cylinder (16 Row 30) 1994 -	2	957-001-019	3/8 x 92 Inch Long Hose Assembly (16 Row 30)	1	
	81002580	3.50 Inch Diameter x 16 Inch Stroke Cylinder (8 Row, 30 36/38) (12 Row 30) (12 Row 36/38)	2	957-001-006	3/8 x 41 Inch Long Hose Assembly (8 Row 30)	1	
5	956-005-002	90° Elbow, 9/16 - 18 Female 37° JIC To 9/16 - 18 Male 37° JIC	4	957-001-015	3/8 x 68 Inch Long Hose Assembly (8 Row 36/38)	1	
				957-001-018	3/8 x 79 Inch Long Hose Assembly (12 Row 30)	1	
6	956-008-024	Restrictor Fitting, 3/4 - 16 Male SAE O-Ring To 9/16 - 18 Male 37° JIC	4	957-001-057	3/8 x 86 Inch Long Hose Assembly (12 Row 36/38)	1	
				957-001-056	3/8 x 108 Inch Long Hose Assembly (16 Row 30)	1	
7	957-001-009	3/8 x 50 Inch Long Hose Assembly (8 Row 30)	1	10	957-001-014	3/8 x 60 Inch Long Hose Assembly (8 Row 30)	1
	957-001-017	3/8 x 72 Inch Long Hose Assembly (8 Row 36/38)	1	957-001-057	3/8 x 86 Inch Long Hose Assembly (8 Row 36/38)	1	
	957-001-018	3/8 x 79 Inch Long Hose Assembly (12 Row 30)	1	957-001-020	3/8 x 96 Inch Long Hose Assembly (12 Row 30)	1	
	957-001-071	3/8 x 102 Inch Long Hose Assembly (12 Row 36/38)	1	957-001-023	3/8 x 120 Inch Long Hose Assembly (12 Row 36/38)	1	
	957-001-056	3/8 x 108 Inch Long Hose Assembly (16 Row 30)	1	957-001-054	3/8 x 126 Inch Long Hose Assembly (16 Row 30)	1	



# SERIES 1000 ROW CULTIVATOR

## WING LIFT FOLDING TOOLBAR

Models  
 16 Row 20/22"  
 18 Row 20/22"  
 24 Row 20/22"

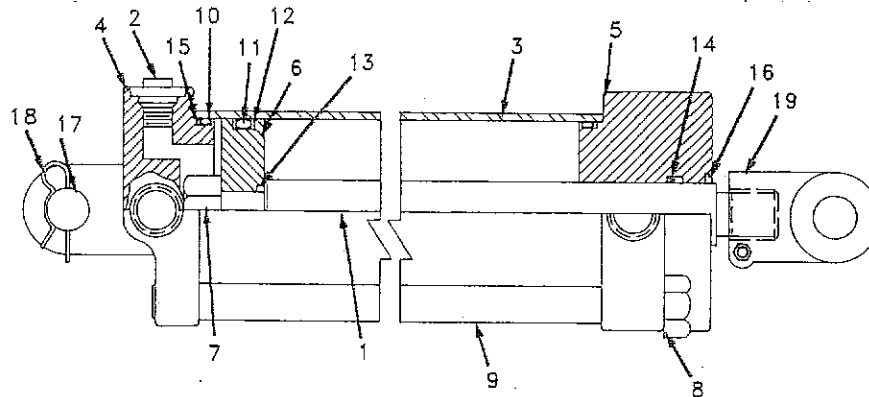


DWG. NO. 3238

REF. NO.	PART NUMBER	DESCRIPTION	QTY.	REF. NO.	PART NUMBER	DESCRIPTION	QTY.
1	956-004-002	Reducer Bushing 1/2 Male NPT To 3/8 Female NPT	2	7	957-001-018	3/8 Inch Hose Assembly 79 Inch 16 Row 22, 18 Row 22	1
2	957-002-014	3/8 Inch Hose Assembly 48 Inches	2		957-001-023	3/8 Inch Hose Assembly 126 Inch 24 Row 22	1
3	956-007-003	Bulkhead Tee 9/16 Male JIC To 9/16 Male JIC To 9/16 Male JIC	2	8	957-001-014	3/8 Inch Hose Assembly 60 Inch 16 Row 22, 18 Row 22	1
4	81004342	4.00 Inch Diameter x 16 Inch Stroke Cylinder 16 & 18 Row 20/22	2		957-001-056	3/8 Inch Hose Assembly 108 Inch 24 Row 22	1
	81002581	5.00 Inch Diameter x 16 Inch Stroke Cylinder 24 Row 20/22	2	9	957-001-018	3/8 Inch Hose Assembly 79 Inch 16 Row 22, 18 Row 22	1
5	956-005-002	90 ° Elbow 9/16 Female JIC To Male 9/16 JIC	4		957-001-056	3/8 Inch Hose Assembly 108 Inch 24 Row 22	1
6	956-008-024	Restrictor Fitting 3/4 male SAE O-Ring 9/16 Male JIC 3.50 Cyl. & 4.00 Cyl.	4	10	957-001-020	3/8 Inch Hose Assembly 96 Inch 16 Row 22, 18 Row 22	1
	956-008-025	Restrictor Fitting 7/8 male SAE O-Ring 9/16 Male JIC 5.00 Cyl.	4		957-001-027	3/8 Inch Hose Assembly 144 Inch 24 Row 22	1
				11	81004701	3/8 Needle Valve (Optional)	1
				12	956-003-022	Str. Adapter 3/8 MNPT To 1/2 MNPT (Optional)	1

**SERIES 1000 ROW CULTIVATOR.**

**3.50 INCH DIAMETER X 16 INCH STROKE  
CYLINDER WITH O-RING BOSS PORTS**



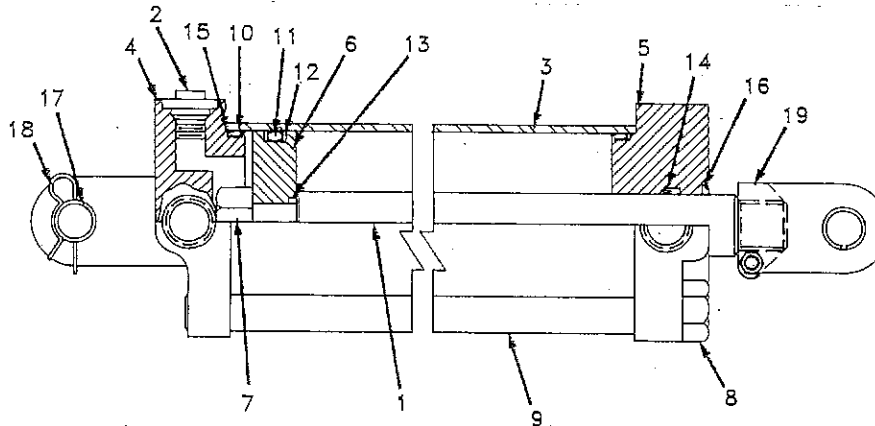
CYLINDER IDENTIFICATION HINIKER P/N 81002580  
PRINCE P/N SAE - 9316A SP

DWG. NO. 2301

REF. NO.	PART NUMBER	DESCRIPTION	QTY.	REF. NO.	PART NUMBER	DESCRIPTION	QTY.
1	81002605	Piston Rod	1	12	*	Back-Up Washer	2
2	855-001-404	#8 SAE Plug	1	13	*	O-Ring	1
3	850-001-794	Tube	1	14	*	U-Cup	1
4	855-001-413	Butt	1	15	*	Back-Up Washer	2
5	856-001-252	Gland	1	16	*	Wiper	1
6	81002604	Piston	1	17	850-001-804	Clevis Pin	1
7	855-001-387	Lock Nut 7/8 - 14 UNC Uni-Torque	1	18	840-001-206	Hair Pin Clip	2
8	856-001-254	Hex Nut	4	19	856-001-239	Clevis Assembly	1
9	850-001-796	Tie Rod	4		856-001-258	Seal Kit (Includes Items 10, 11, 12, 13, 14, 15 & 16)	
10	*	O-Ring	2		81002580	Complete 3.50 Dia. x 16 Inch Stroke Cylinder	
11	*	O-Ring	1				

\* NOTE:  
Items marked "\*" are available in seal kit.

**4.00 INCH DIAMETER X 16 INCH STROKE CYLINDER  
3/4 O-RING PORTS 1991 - 1994**



CYLINDER IDENTIFICATION HINIKER P/N 81002579  
PRINCE P/N AM - 111 SP

DWG. NO. 2298

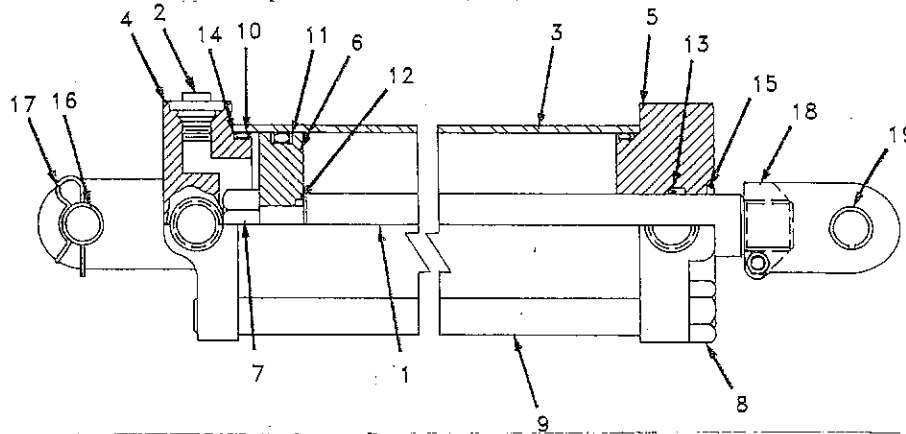
REF. NO.	PART NUMBER	DESCRIPTION	QTY.	REF. NO.	PART NUMBER	DESCRIPTION	QTY.
1	861-001-222	Piston Rod	1	12	*	Backup Washer	2
2	855-001-404	#8 SAE Plug	1	13	*	O-Ring	1
3	861-001-223	Tube	1	14	*	U-Cup	1
4	855-001-426	Butt	1	15	*	Backup Washer	2
5	855-001-425	Gland	1	16	*	Wiper	1
6	850-001-809	Piston	1	17	850-001-818	Clevis Pin	1
7	951-005-034	Lock Nut, 1 1/4 - 12 UNF UNI-Torque	1	18	840-001-206	Hair Pin Clip	2
8	855-001-424	Hex Nut	4	19	855-001-402	Clevis Assembly	1
9	81002578	Tie Rod	4		855-001-429	Seal Kit (Includes Items 10, 11, 12, 13, 14, 15 & 16)	
10	*	O-Ring	2		81002579	Complete 4 x 16 Cylinder Assembly	
11	*	O-Ring	1				

\* NOTE:  
Items marked "\*" are available in seal kit.

3B

## SERIES 1000 ROW CULTIVATOR

### 4.00 INCH DIAMETER X 16 INCH STROKE CYLINDER 3/4 O-RING PORTS 1994 & LATER



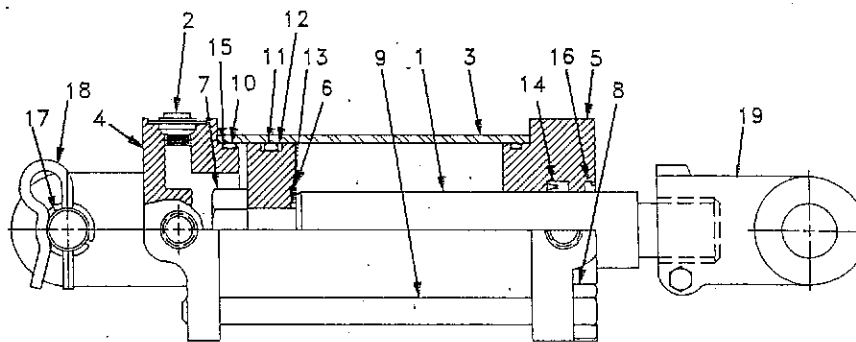
CYLINDER IDENTIFICATION HINIKER P/N 81004342  
PRINCE P/N AR-264

DWG. NO. 2938

REF. NO.	PART NUMBER	DESCRIPTION	QTY.	REF. NO.	PART NUMBER	DESCRIPTION	QTY.
1	81004343	Piston Rod	1	12	*	O-Ring	1
2	855-001-404	#8 SAE Plug	1	13	*	U-Cup	1
3	850-001-223	Tube	1	14	*	Back-Up Washer	2
4	855-001-426	Butt	1	15	*	Wiper Ring	1
5	81004344	Gland	1	16	81004348	Clevis Pin	1
6	81004345	Piston	1	17	840-001-206	Hair Pin Clip	2
7	951-005-034	Lock Nut 1 1/4 - 12 UNC UNF Uni-Torque	1	18	81004349	Clevis Assembly	1
8	855-001-424	Hex Nut	4	19	81004351	Bushing	2
9	81002578	Tie Rod	4		81004352	Seal Kit (Includes Items 10, 11, 12, 13, 14, & 15)	
10	*	O-Ring	2		81004342	Complete 4.00 Dia. x 16 Inch Stroke Cylinder	
11	*	Crown Seal	1				

\* NOTE:  
Items marked "\*" are available in seal kit.

### 5 INCH DIAMETER X 16 INCH STROKE CYLINDER 7/8 O-RING PORTS



CYLINDER IDENTIFICATION HINIKER P/N 81002581  
PRINCE P/N SAE9516

DWG. NO. 2935

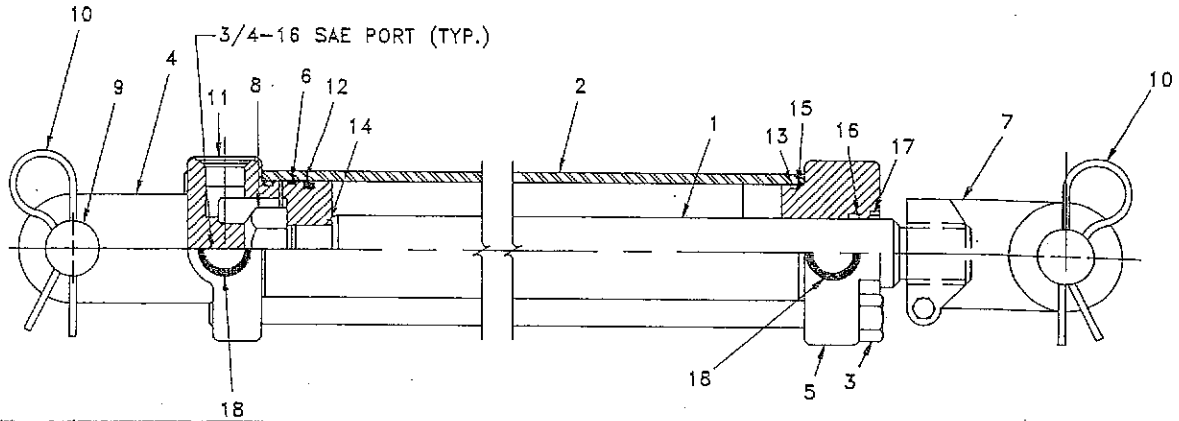
REF. NO.	PART NUMBER	DESCRIPTION	QTY.	REF. NO.	PART NUMBER	DESCRIPTION	QTY.
1	840-001-189	Piston Rod	1	12	*	BU Washer	2
2	81002593	#10 SAE Plug	1	13	*	O-Ring	1
3	840-001-191	Tube	1	14	*	U-Cup	1
4	81002592	Butt	1	15	*	BU Washer	2
5	81002591	Gland	1	16	*	Wiper	1
6	840-001-194	Piston	1	17	81004348	Clevis Pin	1
7	951-005-034	Locknut	1	18	840-001-206	Hair Pin Clip	2
8	855-001-424	Hex Nut	4	19	81002585	Clevis Assembly	1
9	81002590	Tie Rod	4		81002594	Seal Kit (Includes Items 10, 11, 12, 13, 14, 15 & 16)	
10	*	O-Ring	2				
11	*	O-Ring	1		81002581	Complete 5x16 Cylinder Assembly	

\* NOTE:  
Items marked "\*" are available in seal kit.

3 of 5

# SERIES 1000 ROW CULTIVATOR

## 3 INCH DIAMETER X 8 INCH STROKE CYLINDER 3/4 O-RING PORTS



CYLINDER IDENTIFICATION HINIKER P/N 81004503  
PRINCE HYD. P/N SAE 33008SP

DWG. NO. 3012

REF. NO.	PART NUMBER	DESCRIPTION	QTY.	REF. NO.	PART NUMBER	DESCRIPTION	QTY.
1	81004504	Piston Rod	1	12	*	Crown Seal	1
2	81004505	Tube	1	13	*	O-Ring	2
3	81004506	Tie Rod Assembly	4	14	*	O-Ring	1
4	81004507	Butt	1	15	*	BU-Washer	2
5	81004508	Gland	1	16	*	U-Cup	1
6	81004509	Piston	1	17	*	Wiper	1
7	81004510	Clevis Assembly	1	18	81004515	Port Plug	2
8	81004511	Lock Nut	1	19	81004516	Cotter Pin	4
9	81004512	Clevis Pin	2		81004517	Seal Kit	
10	81004513	Hair Pin Clip	2		81004503	Complete 3x8 Cylinder Assembly	
11	81004514	Port Plug 3/4-16	1				

\* NOTE:  
Items marked \* are available in  
seal kit.

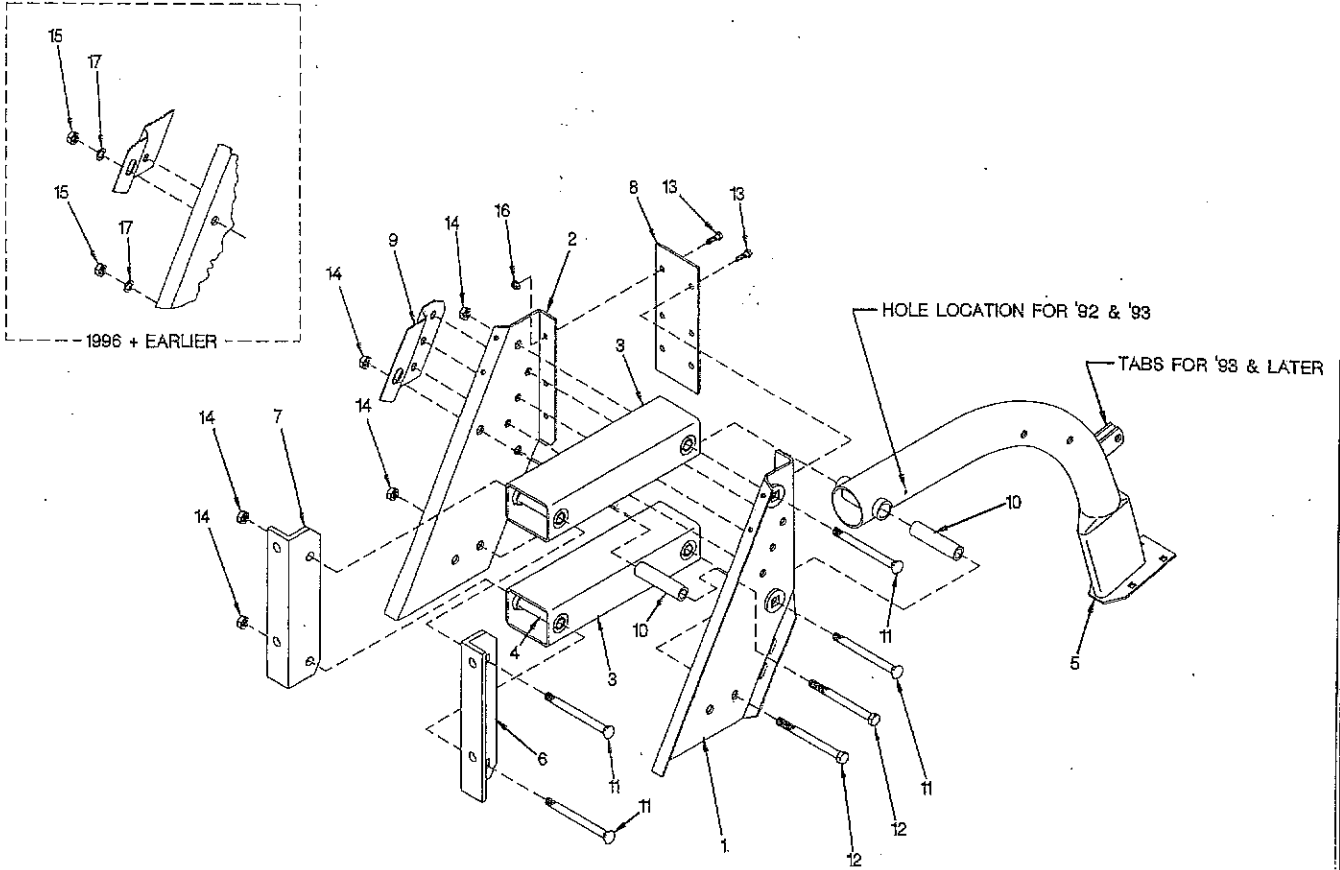
3 CMS  
3B

# SECTION 4 COMPONENT PARTS BREAKDOWN

PAGE 2	CULTIVATOR ROW UNIT ASSEMBLY
PAGE 3	TILLAGE UNIT PARTS
PAGE 4	TOGGLE TRIP
PAGE 5	SPRING CUSHION
PAGE 6	COULTER MAST
PAGE 7	COULTER BLADE & HUB
PAGE 7	PARKING STAND ASSEMBLY
PAGE 8	LOWER HITCH RIGID
PAGE 8	UPPER HITCH RIGID
PAGE 9	LOWER HITCH FOLDING & 12 ROW 20/22 RIGID
PAGE 9	UPPER HITCH FOLDING & 12 ROW 20/22 RIGID
PAGE 10	TILLAGE UNIT GAUGE WHEEL
PAGE 10	COULTER & GAUGE WHEEL HUB
PAGE 11	TILLAGE UNIT MOUNTING HARDWARE

SERIES 1000 ROW CULTIVATOR

1000 CULTIVATOR ROW UNIT ASSEMBLY



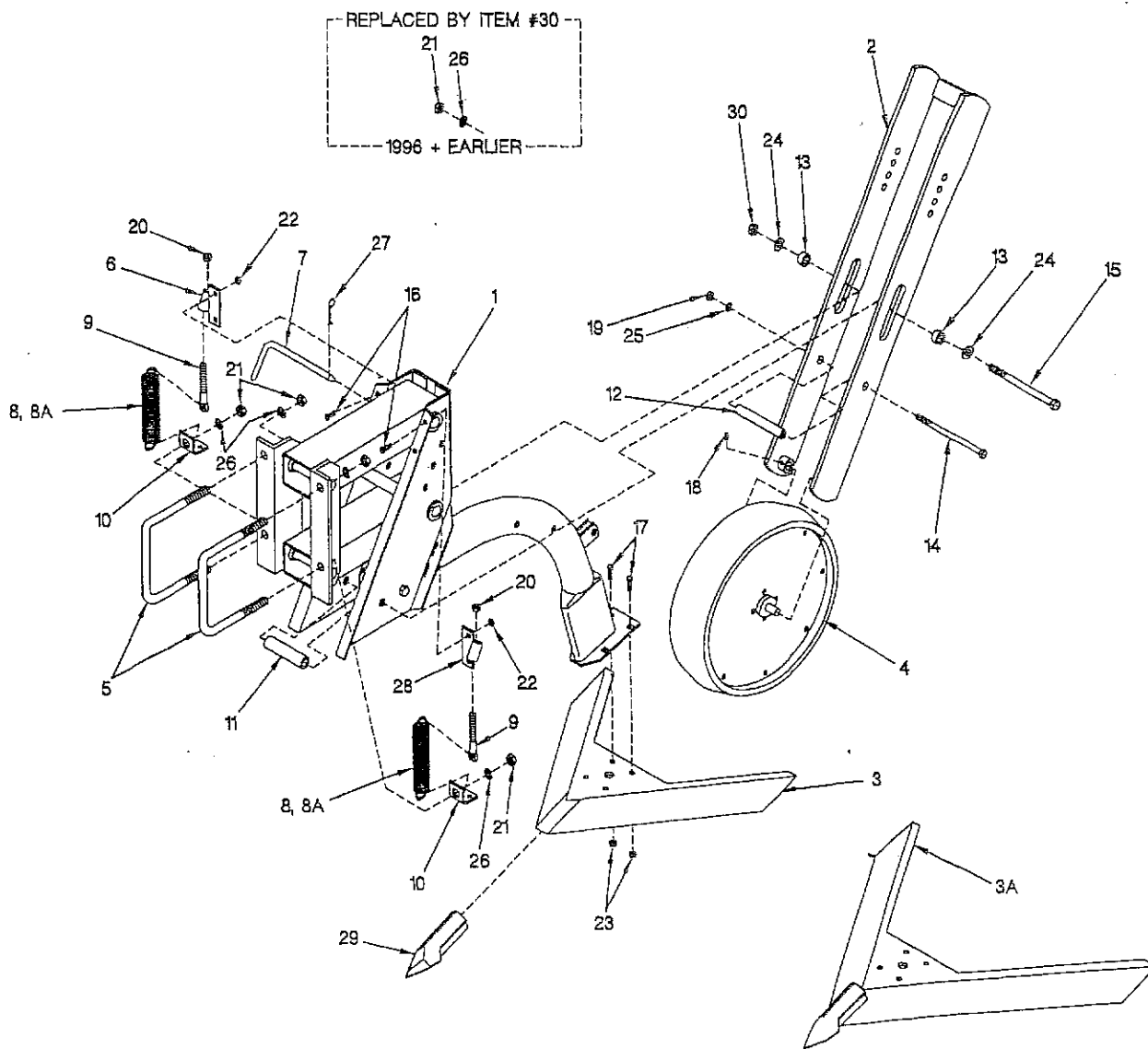
4 CHS

DWG. NO. 2442 B

REF. NO.	PART NUMBER	DESCRIPTION	QTY.	REF. NO.	PART NUMBER	DESCRIPTION	QTY.
1	81003056	LH Side Plate Weld	1	9	81003041	Lock Plate	1
	81003055	RH Side Plate Weld	1	10	81003016	Sleeve	2
3	81003048	Tube Press Assembly (Includes Item 4)	2	11	81003253	Special Carriage Bolt	4
4	81003015	Bushing (Service Part Only)	4	12	950-001-163	HHCS, 5/8 - 11 UNC x 5 1/2, GR. 5	2
5	81003229	Shank Weld ('92 & Later By Letter "S" Stamped On Bottom Plate)	1	13	950-001-105	HHCS, 3/8 - 16 UNC x 1", GR. 5	2
	81003049	Shank Weld ('91 & Earlier)	1	14	951-005-082	Uni-Torque Locknut, 5/8 - 11 UNC	4
6	81003059	LH Angle	1	15	951-001-008	Hex Nut, 5/8 - 11 UNC (Serial No. 1000-xxxx-100)	2
7	81003058	RH Angle	1	16	951-002-003	Whiz Locknut, 3/8 - 16 UNC	2
8	81003044	Back Plate	1	17	952-001-005	Lockwasher, 5/8 Inch (Serial No. 1000-xxxx-100)	2

# SERIES 1000 ROW CULTIVATOR

## TILLAGE UNIT PARTS

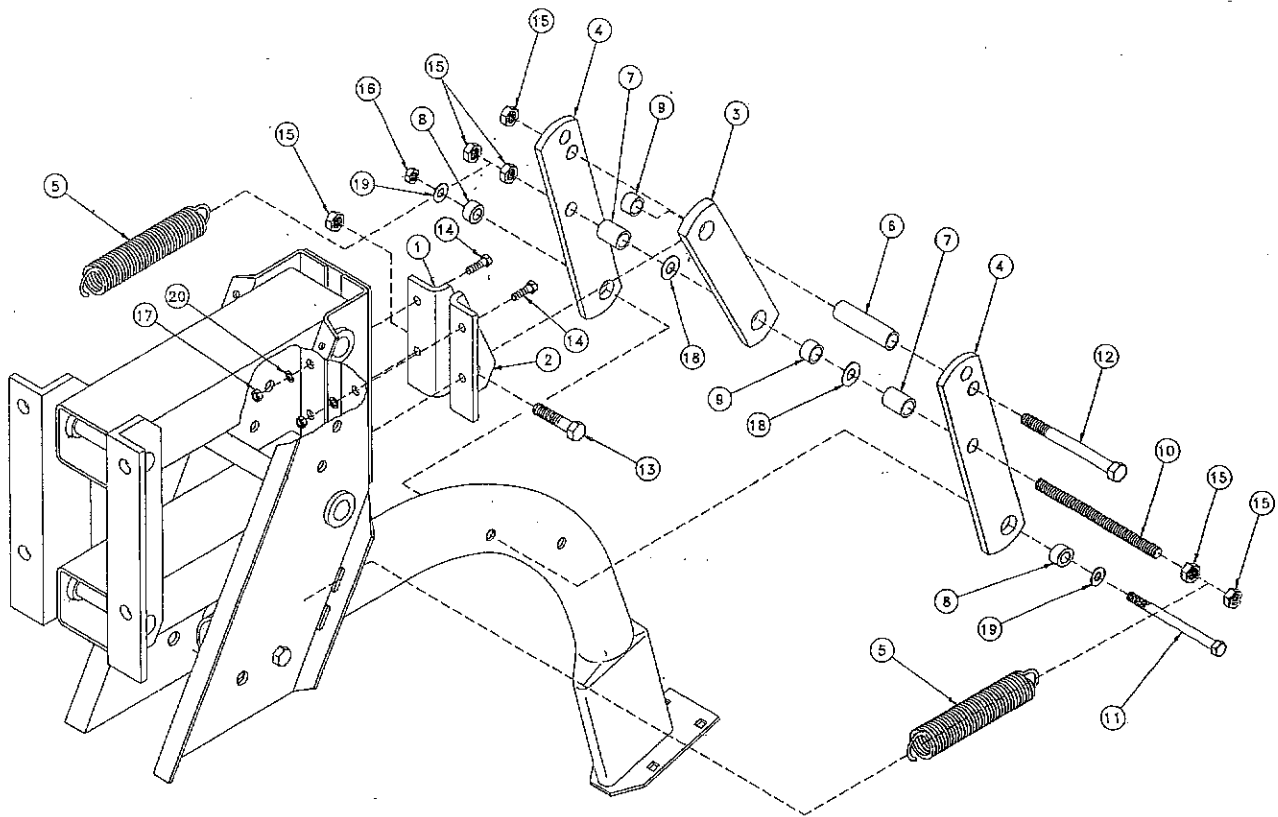


DWG. NO. 2331C

REF. NO.	PART NUMBER	DESCRIPTION	QTY.	REF. NO.	PART NUMBER	DESCRIPTION	QTY.
1		Tillage Unit Assembly (See Section 4 Page 2)	1	10	81003033	Anchor Strap	2
2	81003053	Support Weld	1	11	81003016	Sleeve, 4 1/16 Long	1
3	81003205	27 inch Sweep	1	12	81003163	Spacer, 3/4 OD x .120 Wall x 4 11/16 Long	1
	81003206	25 inch Sweep	1	13	81003018	Spacer, 1" OD x .179 Wall x 1/2 Long	2
	81003001	21 inch Sweep	1	14	950-001-214	HHCS, 1/2 - 13 UNC x 6 GR. 2	1
	81003002	19 inch Sweep	1	15	950-001-027	HHCS, 5/8 - 11 UNC x 6 1/2 GR. 5	1
	81003003	17 inch Sweep	1	16	950-001-113	HHCS, 5/16 - 18 UNC x 3/4 GR. 5	4
3A	81003486	27 Inch Sweep w/Point	1	17	950-003-029	Carriage Bolt, 3/8 - 16 UNC x 1" GR. 5	4
	81003485	25 Inch Sweep w/Point	1	18	701-05101	Square Head Set Screw, 5/16 - 18 UNC x 3/8 Cup PT.	2
	81003484	21 Inch Sweep w/Point	1	19	951-001-007	Hex Nut, 1/2 - 13 UNC	1
	81003483	19 inch Sweep w/Point	1	20	951-003-009	Nylon Insert Locknut, 1/2 - 13 UNC	2
	81003482	17 inch Sweep w/Point	1	21	951-001-008	Hex Nut, 5/8 - 11 UNC	4
4	81003050	4 x 16 Tire Assembly (See Section 4 Page 10)	1	22	951-002-002	Flange Whiz Locknut, 5/16 - 18 UNC	4
5	81003020	U-Bolt, 5/8 - 11 UNC x 7 5/8 Center x 6 1/2 Long (5 x 7 Bar Only)	2	23	951-002-003	Flange Whiz Locknut, 3/8 - 16 UNC	4
	805-001-332	U-Bolt, 5/8 - 11 UNC x 7 5/8 Center x 8 3/4 Long (7 x 7 Bar Only)	2	24	952-002-007	Flat Washer, 5/8 Inch	2
6	81003051	RH Anchor Weld	1	25	952-001-004	Lockwasher, 1/2 Inch	1
7	81003042	Pin	1	26	952-001-005	Lockwasher, 5/8 Inch	4
8	725-03024	Extension Spring (Obs. Replaced By 81003548)	2	27	953-005-001	Hair Pin	1
8A	81003548	Extension Spring	2	28	81003052	LH Anchor Weld	1
9	81003036	Adjusting Rod	2	29	81003270	Auxiliary Cast Point Kit (Optional)	A/R
				30	950-005-082	Uni-Torque Locknut 5/8 - 11 UNC	1

SERIES 1000 ROW CULTIVATOR

TOGGLE TRIP SHANK



4 0116

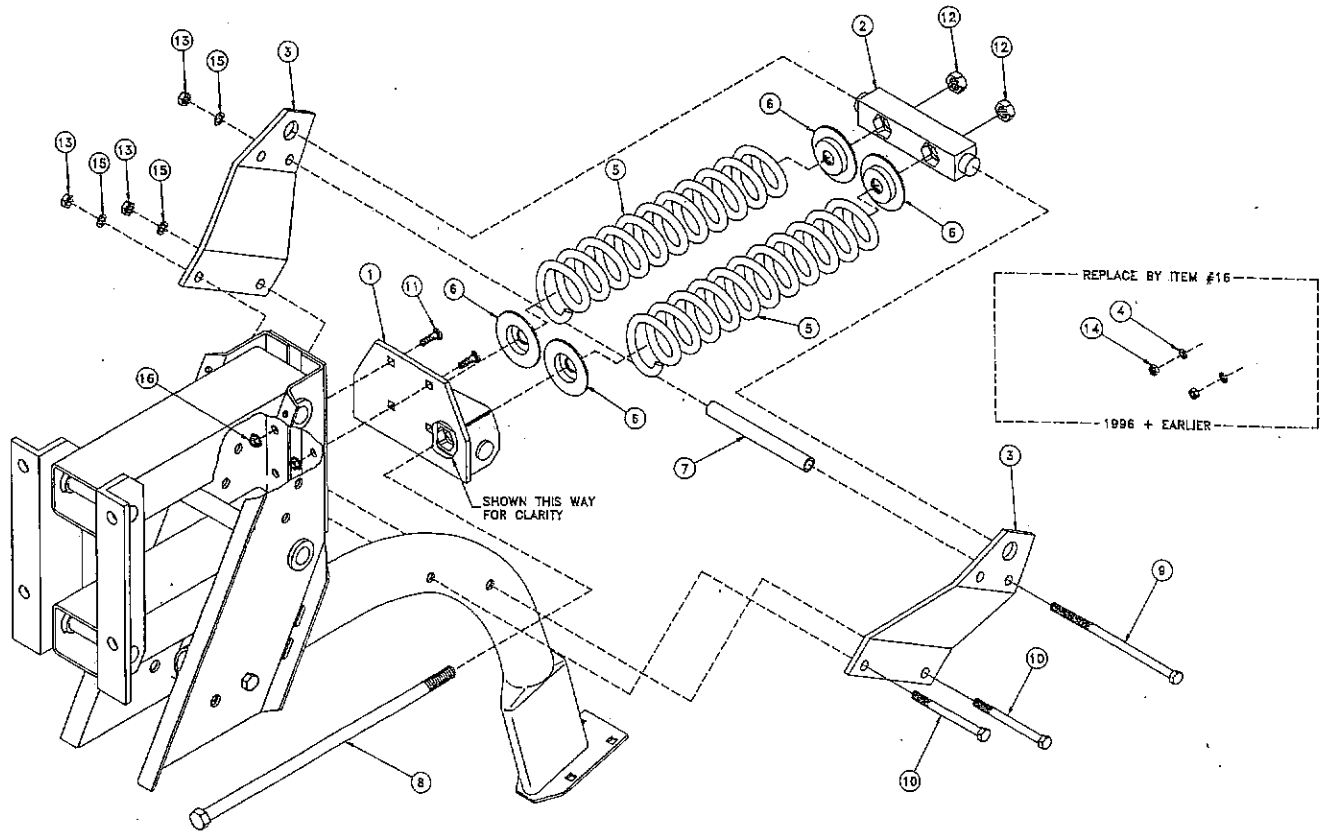
DWG. NO. 2341

REF. NO.	PART NUMBER	DESCRIPTION	QTY.	REF. NO.	PART NUMBER	DESCRIPTION	QTY.
1	81003028	RH Upper Anchor Plate	1	11	950-001-060	1/2 - 13 UNC x 5 Hex HD Cap Screw GR. 5	1
2	81003029	LH Upper Anchor Plate	1	12	950-001-148	5/8 - 11 UNC x 5 Hex HD Cap Screw GR. 5	1
3	81003101	Pivot Link	1	13	950-001-023	5/8 - 11 UNC x 2 Hex HD Cap Screw GR. 5	1
4	81003102	Pivot Strap	2	14	950-001-106	3/8 - 16 UNC x 1-1/4" Hex HD Cap Screw GR. 5	4
5	725-03024	Extension Spring	2	15	951-005-063	5/8 - 11 UNC UNI-Torque Lock Nut	6
6	81003045	Sleeve 5/8 ID x 3 - 316 Long	1	16	034-05156	1/2 - 13 UNC UNI-Torque Lock Nut	1
7	81003046	Spacer 5/8 ID x 1 3/16 Long	2	17	951-001-005	3/8 - 16 UNC Hex Nut	4
8	81003027	Bushing 1/2 ID x 7/16 Long	2	18	952-002-007	5/8 Flat Washer	2
9	81003026	Bushing 5/8 ID x 9/16 Long	2	19	952-002-005	1/2 Flat Washer	2
10	81003043	Threaded Rod 5/8 - 11 UNC x 7	1	20	952-001-007	3/8 Lockwasher	4



# SERIES 1000 ROW CULTIVATOR

## SPRING CUSHION SHANK

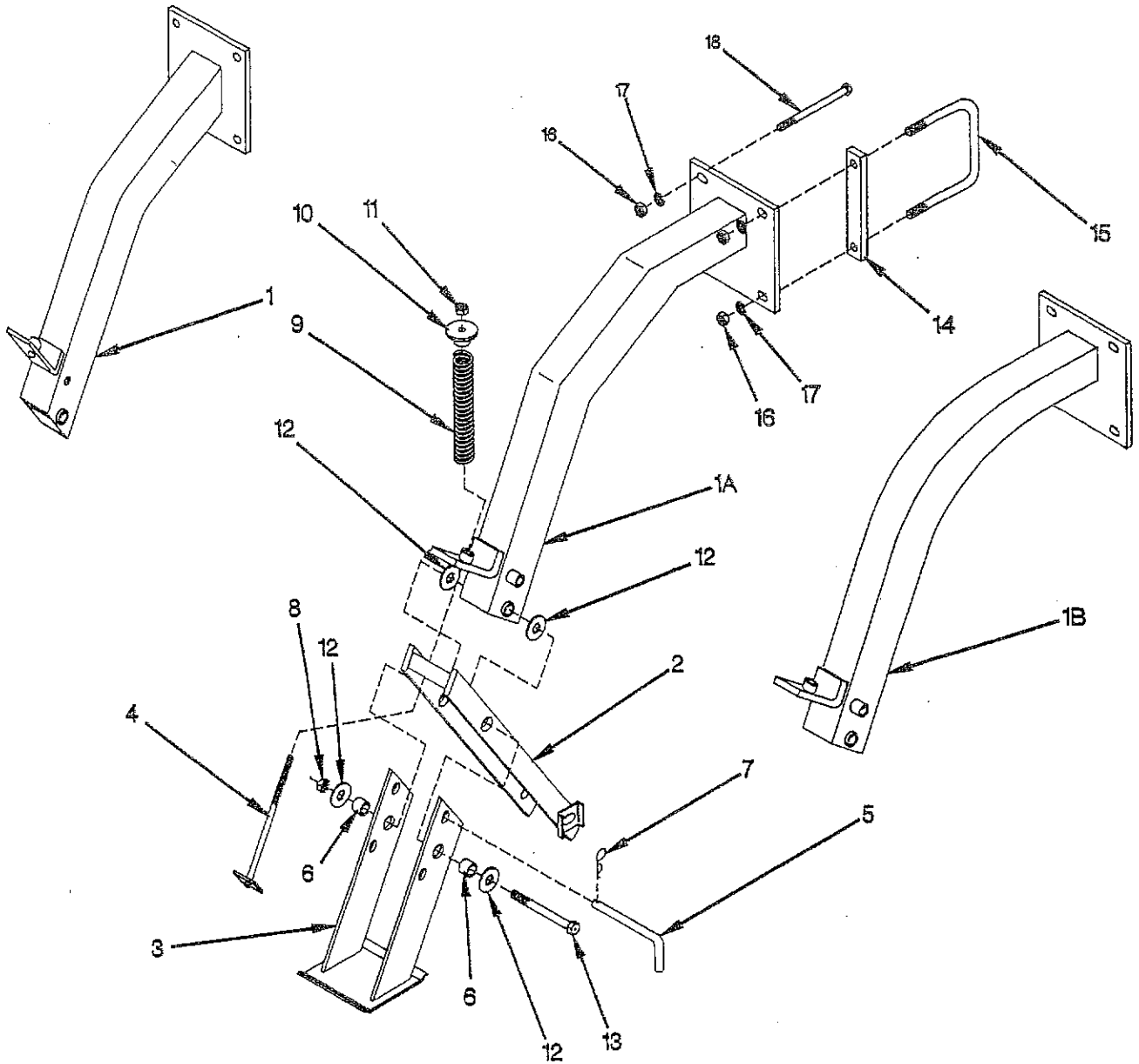


DWG. NO. 2348A

REF. NO.	PART NUMBER	DESCRIPTION	QTY.	REF. NO.	PART NUMBER	DESCRIPTION	QTY.
1	81003054	Trunnion Support Weld	1	9	950-001-259	HHCS, 1/2 - 13 UNC x 8 1/2 GR. 5	1
2	81003011	Trunnion	1	10	950-001-128	HHCS, 1/2 - 13 UNC 4 1/2 GR. 5	2
3	81003032	Spring Anchor	2	11	950-003-007	Carriage Bolt 3/8 - 16 UNC x 1 1/4 GR. 5	4
4	952-001-007	Lockwasher 3/8 Inch (1996 & Earlier)	4	12	951-005-033	Uni-Torque Locknut 3/4 - 10 UNC	2
5	81003061	Compression Spring	2	13	951-001-007	Hex Nut 1/2 - 13 UNC	3
6	81003060	Washer	4	14	951-001-005	Hex Nut 3/8 - 16 UNC (1996 & Earlier)	4
7	81003087	Tube	1	15	952-001-004	Lockwasher 1/2 inch	4
8	950-001-278	HHCS 3/4 - 10 UNC x 17 1/2 GR. 5	2	16	951-002-003	Flanged Whiz Locknut 3/8 - 16 UNC	4

SERIES 1000 ROW CULTIVATOR

STABILIZING COULTER



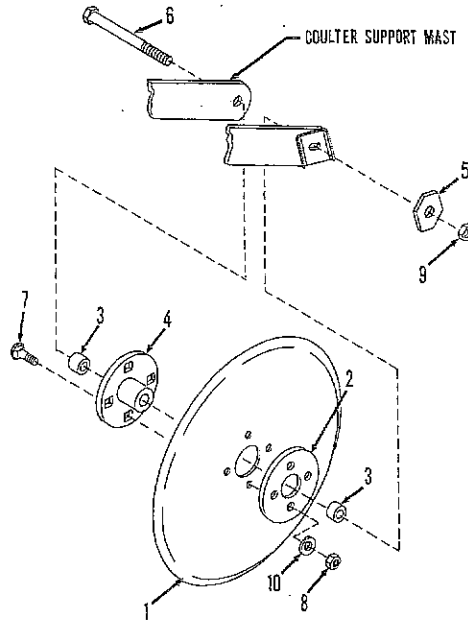
4  
CFIGS

DWG. NO. 2446A

REF. NO.	PART NUMBER	DESCRIPTION	QTY.	REF. NO.	PART NUMBER	DESCRIPTION	QTY.
1	81003262	Mast Weld	1	11	034-05170	Uni-Torque Locknut, 1/2 - 13 UNC	1
1A	81003316	Center Mount Mast Weld OBS R/B 81003506	1	12	952-002-008	Flat Washer, 3/4 Inch	4
1B	81003506	Center Mount Mast Weld	1	13	950-001-253	HHCS, 3/4 - 10 UNC x 7 GR. 5	1
2	81003062	Pivot Arm Weld	1	14	81003082	Spacer Block, 5/8 TK (90 Only)	2
3	81003097	Parking Stand Weld	1	15	81003020	U-Bolt, 5/8 - 11 UNC x 7 5/8 Center (5 x 7 Bar Only)	2
4	81003085	Spring Rod Weld	1		805-001-332	U-Bolt, 5/8 - 11 UNC x 7 5/8 Center (7 x 7 Bar Only)	2
5	81003144	Parking Stand Pin	2	16	951-001-008	Hex Nut, 5/8 - 11 UNC	4
6	81003067	Tube	1	17	952-001-005	Lockwasher, 5/8 Inch	4
7	953-005-001	Hair Pin	1	18	950-001-143	HHCS, 5/8 - 11 UNC x 7 GR. 5 (5 x 7 Bar Only)	4
8	951-005-037	2-Way Locknut, 3/4 - 10 UNC	1		950-001-227	HHCS, 5/8 - 11 UNC x 9 GR. 5 (7 x 7 Bar Only)	4
9	805-002-007	Compression Spring	1		950-001-178	HHCS, 5/8 - 11 UNC x 10 Gr. 5 (22 Inch Rows Only)	4
10	81003081	Spring Plate Weld					

# SERIES 1000 ROW CULTIVATOR

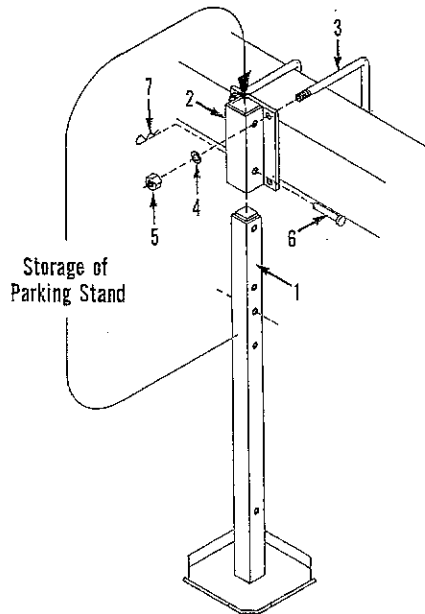
## STABILIZING COULTER BLADE & HUB



DWG. NO. 2365

REF. NO.	PART NUMBER	DESCRIPTION	QTY.	REF. NO.	PART NUMBER	DESCRIPTION	QTY.
1	805-001-001	Coulters Blade 18 Inch	1	6	950-001-152	HHCS 3/4 - 10 UNC x 6 GR. 5	1
2	805-001-015	Backup Washer	1	7	950-003-028	Carr Bolt 1/2m - 13 UNC x 1 1/4	4
3	810-002-102	Spacer - 3/4 ID x 1/2 Long	2	8	951-001-007	Hex Nut 1/2 - 13 UNC	4
4	810-002-100	Hub w/Bearing Assembly (See Sec. 4, Page 12)	1	9	951-005-037	Locknut 3/4 - 10 UNC	4
5	81003086	Adjustment Washer	1	10	952-001-004	Lockwasher 1/2 Inch	4

## PARKING STAND ASSEMBLY

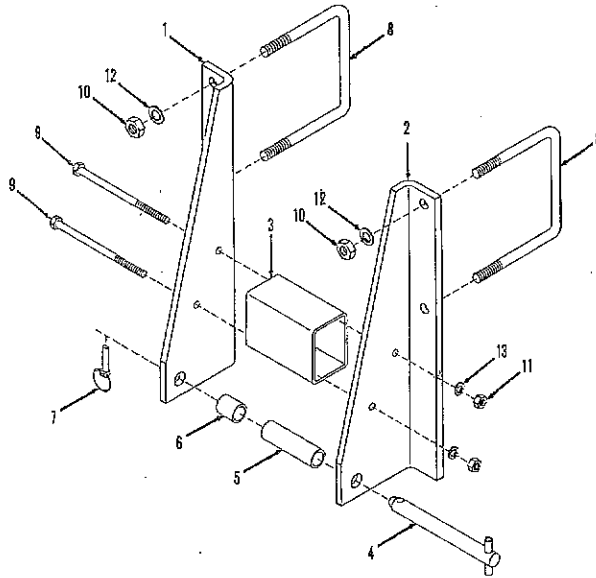


DWG. NO. 1384

REF. NO.	PART NUMBER	DESCRIPTION	QTY.	REF. NO.	PART NUMBER	DESCRIPTION	QTY.
1	885-001-037	Stand Weld	1	4	952-001-006	Lock Washer 3/4	4
2	805-001-847	Mounting Bracket Weld	1	5	951-001-009	Hex Nut 3/4	4
3	875-001-038	U-Bolt 3/4x7-13/16 Inch Center Fits 7x7	2	6	953-002-021	Clevis Pin 5/8x3-1/2 Lg.	1
	875-001-035	U-Bolt 3/4x7-13/16 Inch Center Fits 5x7	2	7	953-005-001	Hair Pin Cotter .120x2-3/8 Lg.	1

# SERIES 1000 ROW CULTIVATOR

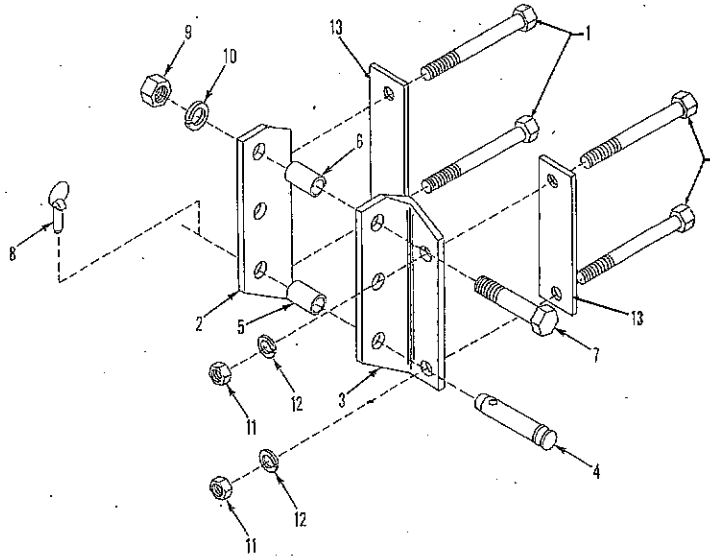
## LOWER HITCH RIGID



DWG. NO. 2395

REF. NO.	PART NUMBER	DESCRIPTION	QTY.	REF. NO.	PART NUMBER	DESCRIPTION	QTY.
1	81003092	RH Lower Hitch Plate	1	8	875-001-035	3/4 - 10 UNC x 7 13/16 Center U-Bolt (5 x 7 Toolbar)	2
2	81003093	LH Lower Hitch Plate	1		875-001-038	3/4 - 10 UNC x 7 13/16 Center U-Bolt (7 x 7 Toolbar)	2
3	81003031	Spacer Tube	1	9	950-001-246	1/2 - 13 UNC x 7 1/2 Hex Hd Cap Screw GR. 5	2
4	851-001-032	Lower Pin Assembly	1	10	951-001-009	3/4 - 10 UNC Hex Nut	4
5	81003024	Large Spacer	1	11	951-001-007	1/2 - 13 UNC Hex Nut	2
6	81003023	Small Spacer	1	12	952-001-006	3/4 Lockwasher	4
7	230-026-005	Klik Pin	1	13	952-001-004	1/2 Lockwasher	2

## UPPER HITCH RIGID

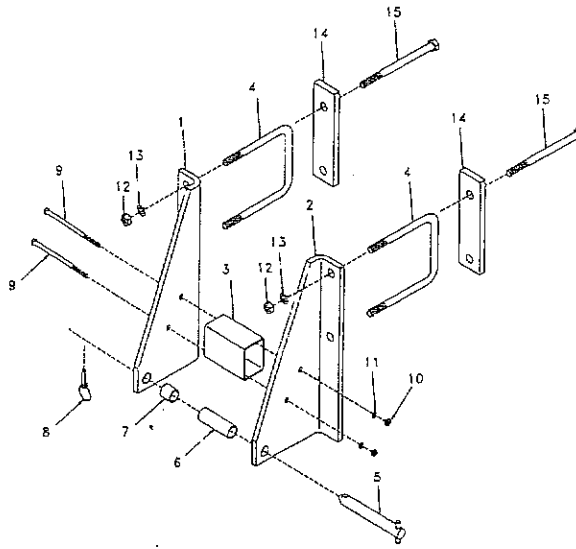


DWG. NO. 2393

REF. NO.	PART NUMBER	DESCRIPTION	QTY.	REF. NO.	PART NUMBER	DESCRIPTION	QTY.
1	950-001-165	HHCS, 5/8 - 11 UNC x 7 1/2 GR. 5 (5 x 7 Bar Only)	4	7	950-001-170	HHCS, 1" - 8 UNC x 4 1/2 GR. 5	1
	950-001-230	HHCS, 5/8 - 11 UNC x 9 1/2 GR. 5 (7 x 7 Bar Only)	4	8	230-026-005	Klik Pin	1
2	81003250	RH Upper Hitch Plate	1	9	951-001-011	Hex Nut, 1" - 8 UNC	1
3	81003249	LH Upper Hitch Plate	1	10	952-001-009	Lockwasher, 1 Inch	1
4	875-001-123	Top Link Pin	1	11	951-001-008	Hex Nut, 5/8 - 11 UNC	4
5	230-026-004	Bushing, 1.005 ID x 1 1/4 OD x 1 15/16 Long	1	12	952-001-005	Lockwasher, 5/8 Inch	4
6	890-001-009	Spacer, 1 1/32 ID x 1 3/8 OD x 2 Long	1	13	81003047	Reinforcing Strap	1

**SERIES 1000 ROW CULTIVATOR**

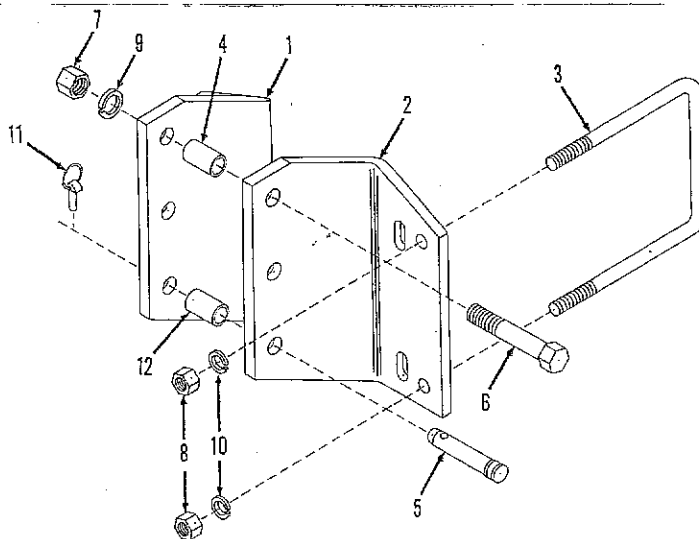
**LOWER HITCH FOLDING &  
12 ROW 20/22" RIGID**



DWG. NO. 2394A

REF. NO.	PART NUMBER	DESCRIPTION	QTY.	REF. NO.	PART NUMBER	DESCRIPTION	QTY.
1	81003247	RH Lower Hitch Plate	1	9	950-001-259	HHCS, 1/2 - 13 UNC x 8 GR. 5	2
2	81003248	LH Lower Hitch Plate	1	10	951-001-007	Hex Nut, 1/2 - 13 UNC	2
3	81003031	Spacer Tube	1	11	952-001-004	Lockwasher, 1/2 Inch	2
4	875-001-038	U-Bolt, 3/4 - 10 UNC x 7 13/16 Center (1990 12 Row 30 Only)	2	12	951-001-009	Hex Nut, 3/4 - 10 UNC (1990 12 Row 30 Only)	4
	81003235	U-Bolt, 7/8 - 9 UNC x 7 7/8 Center	2		951-001-010	Hex Nut, 7/8 - 9 UNC	4
5	851-001-032	Lower Pin Assembly	1	13	952-001-006	Lockwasher, 3/4 Inch (1990 12 Row Only)	4
6	81003024	Large Spacer	1		952-001-008	Lockwasher, 7/8 Inch	4
7	81003023	Small Spacer	1	14	81003524	Mount Plate (1999 16R30)	2
8	230-026-005	Klik Pin	1	15	950-001-210	HHCS 7/8-9 UNC x 10 Gr. 5 (1999 16R30)	4

**UPPER HITCH FOLDING &  
12 ROW 20/22" RIGID**

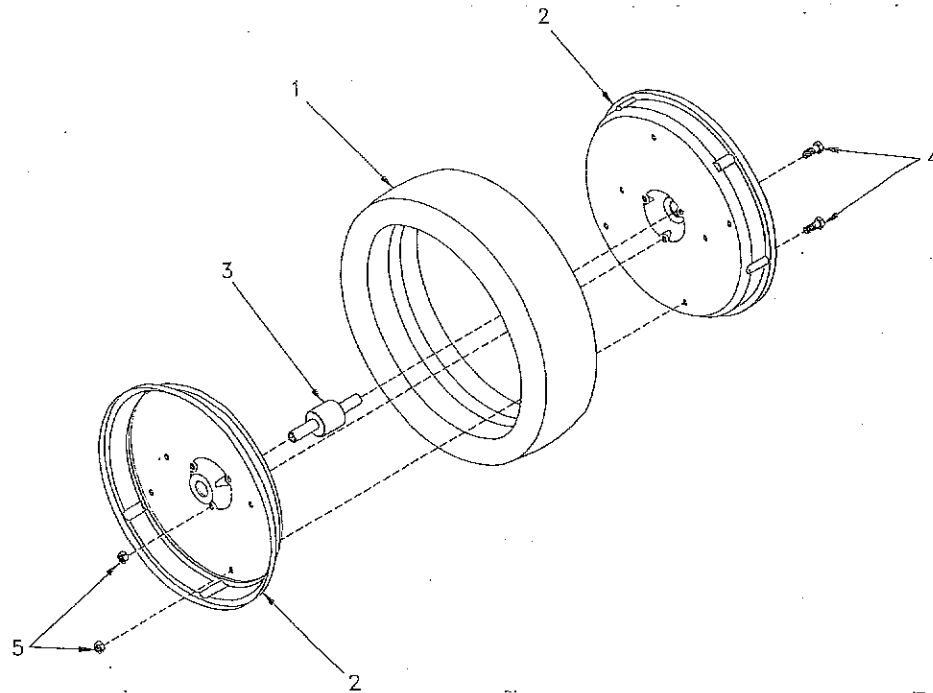


DWG. NO. 2392

REF. NO.	PART NUMBER	DESCRIPTION	QTY.	REF. NO.	PART NUMBER	DESCRIPTION	QTY.
1	81003252	RH Upper Hitch	1	7	951-001-011	Hex Nut, 1" - 8 UNC	1
2	81003251	LH Upper Hitch	1	8	951-001-009	Hex Nut, 3/4 - 10 UNC	4
3	875-001-038	U-Bolt, 3/4 - 10 UNC x 7 13/16 Center	2	9	952-001-009	Lockwasher, 1 Inch	1
4	890-001-009	Spacer, 1 1/32 ID x 1 3/8 OD x 2 Long	1	10	952-001-006	Lockwasher, 3/4 Inch	4
5	875-001-123	Top Link Pin	1	11	230-026-005	Klik Pin	1
6	950-001-170	HHCS, 1" - 8 UNC x 4 1/2 GR. 5	1	12	230-026-004	Bushing, 1.005 ID x 1 1/4 OD x 1 15/16 Long	1

**SERIES 1000 ROW CULTIVATOR**

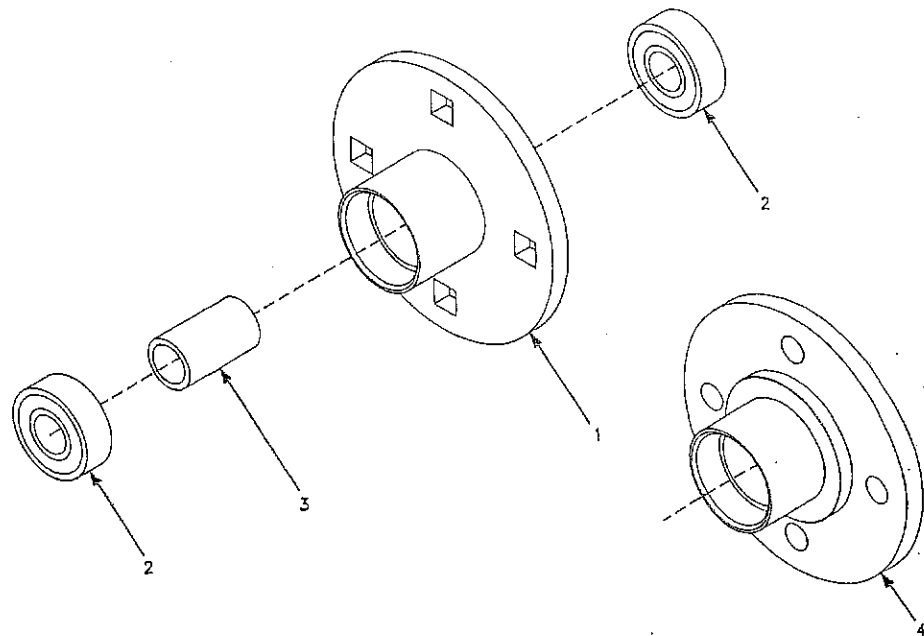
**TILLAGE UNIT GAUGE WHEEL**



DWG. NO. 2447

REF. NO.	PART NUMBER	DESCRIPTION	QTY.	REF. NO.	PART NUMBER	DESCRIPTION	QTY.
1	81003194	Tire, 4x16 Smooth Crown	1	4	950-001-232	HHCS 5/16 - 18 UNC x 5/8 GR.5	7
2	81003196	Wheel Half	2	5	951-005-064	2-Way Lock Nut 5/16 - 18 UNC	7
3	81003195	Bearing Shaft	1				

**COULTER AND GAUGE WHEEL HUB**



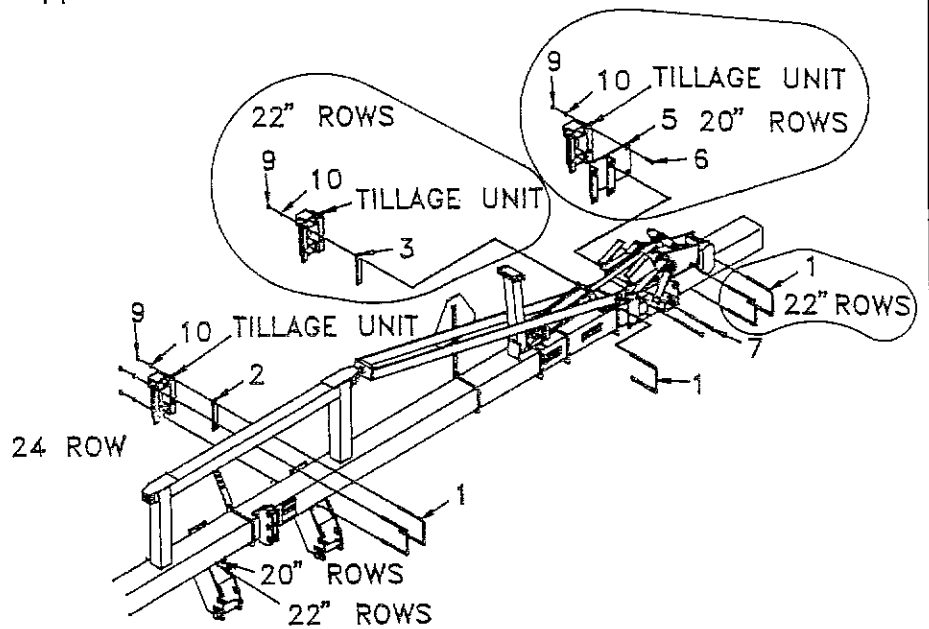
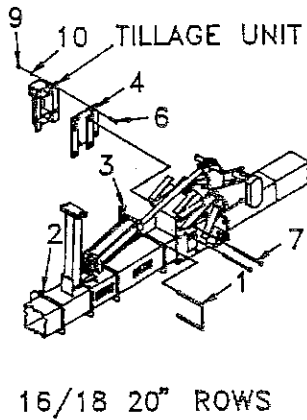
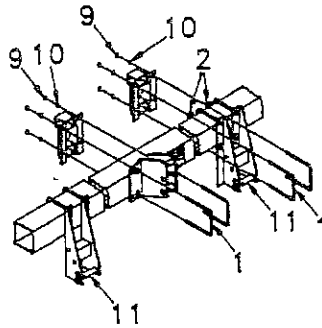
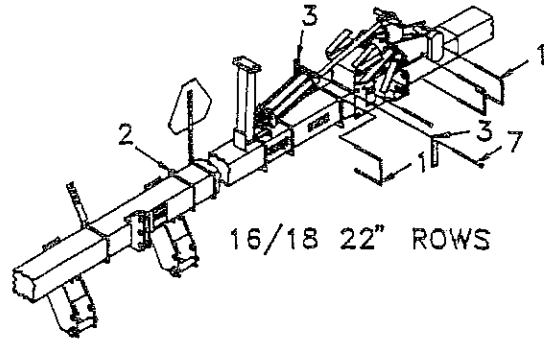
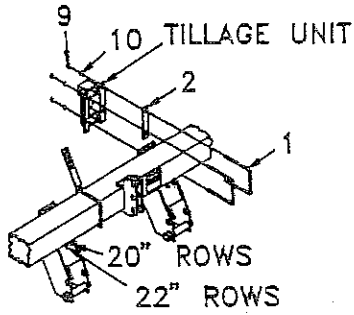
DWG. NO. 2408

REF. NO.	PART NUMBER	DESCRIPTION	QTY.	REF. NO.	PART NUMBER	DESCRIPTION	QTY.
1	810-002-101	4 Bolt Hub Weld	1	810-002-100	Complete Hub with Bearings	Coulters Only (Include Items 1, 2 & 3)	
2	600-02009	3/4 Inch Bearing	2	81003521	Hub w/Bearing Assembly	Gauge Wheel Only (Include Items 1, 2 & 4)	
3	810-002-034	Spacer	1				
4	81003519	4 Bolt HD Hub Weld	1				

4 Cms

# SERIES 1000 ROW CULTIVATOR

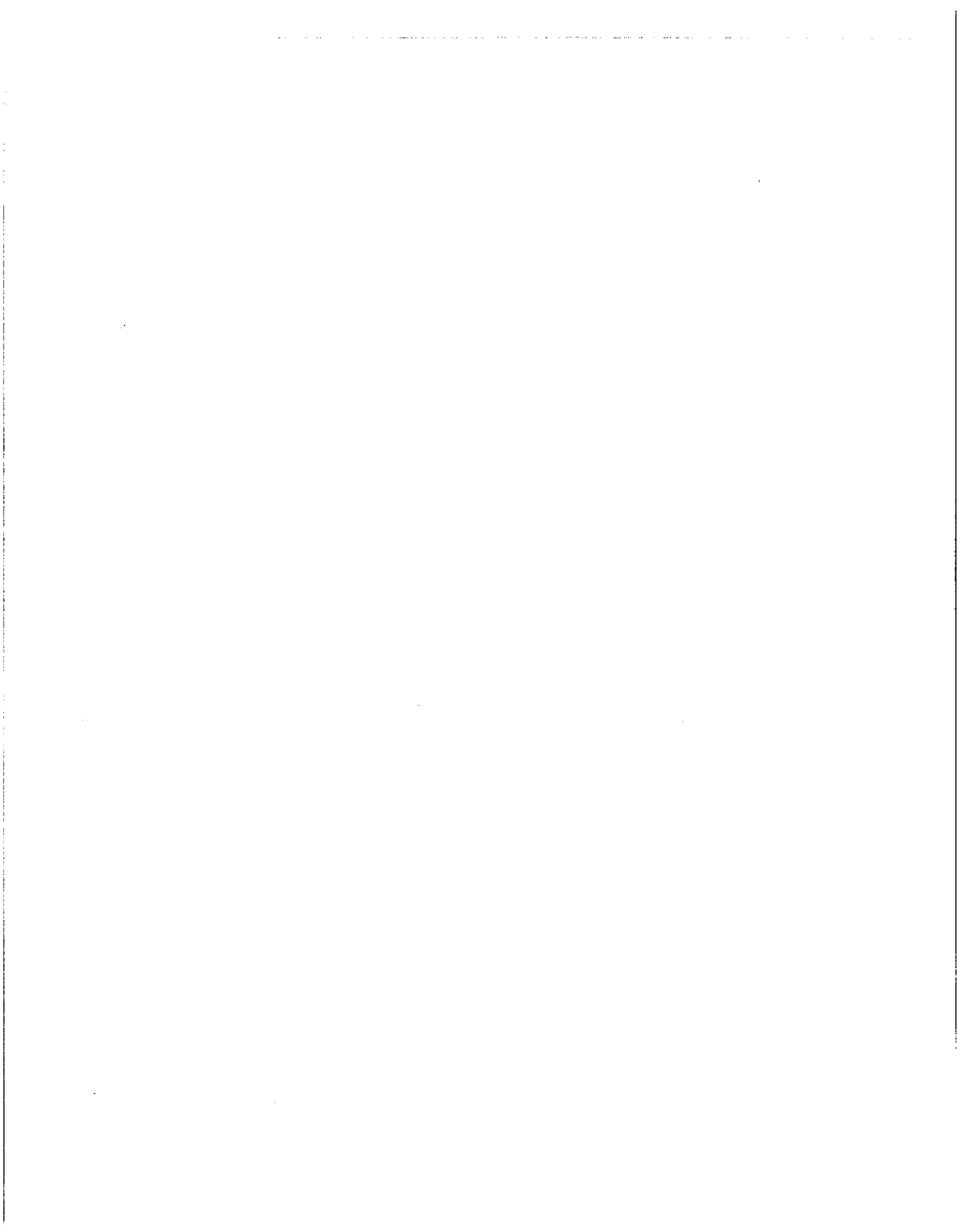
## TILLAGE UNIT MOUNTING HARDWARE



DWG. NO. 3227

REF. NO.	PART NUMBER	DESCRIPTION	QTY.	REF. NO.	PART NUMBER	DESCRIPTION	QTY.
1	805-001-332	U-Bolt 5/8 (Fits 7x7)	A/R	6	950-001-134	Hex Head Cap Screw 5/8 - 11 x 1 3/4	8
2	81003293	Spacer Plate (3/8 Thick)	2	7	81003020	Hex Head Cap Screw 5/8 - 11 x 9 1/2	8
3	81004186	Spacer Strap (22" Rows Only)	4	8	950-001-178	Hex Head Cap Screw 5/8 - 11 x 10	8
4	81003322	Offset Weld 16-18/20"	2	9	951-001-008	Nut Hex 5/8 - 11	A/R
5	81003327	Offset Weld 24/20"	2	10	952-001-005	Washer LK 5/8 Med	A/R

4 OF 5



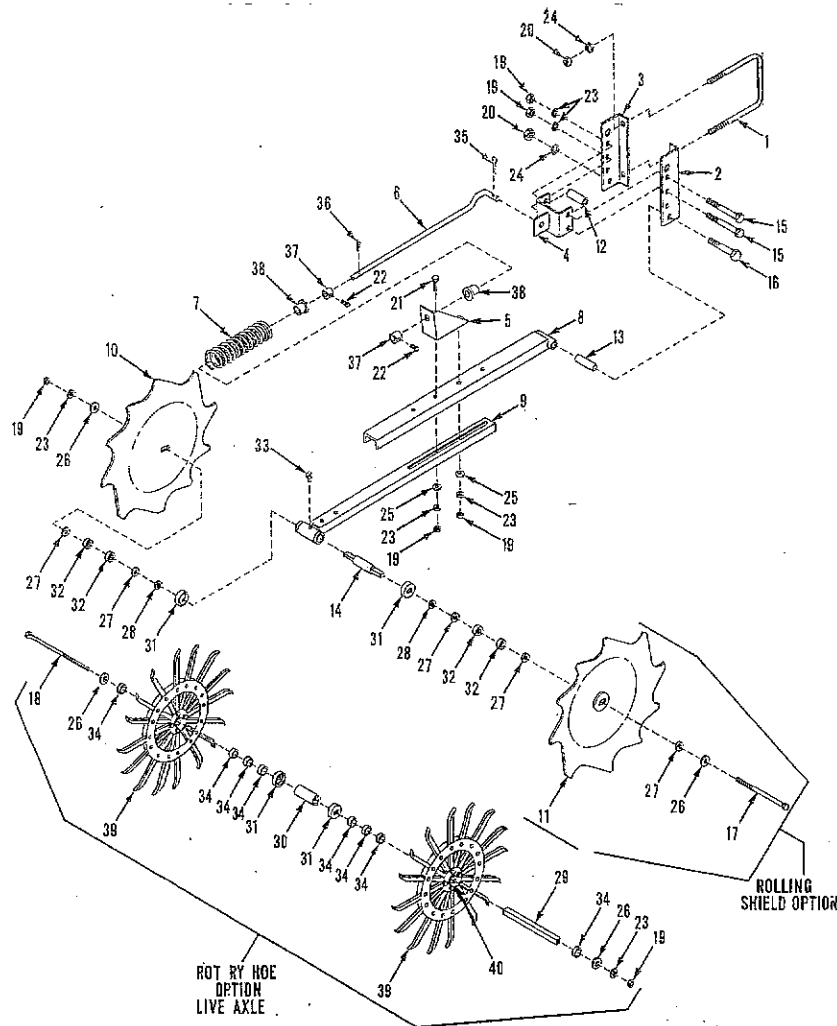


# SECTION 5 OPTIONAL EQUIPMENT

PAGE 2	ROLLING/ROTARY HOE SHIELDS
PAGE 3	SHIELD MOUNTING FOLDING TOOLBAR
PAGE 4	RIDGERS
PAGE 5	CUTAWAY HOE SHIELD
PAGE 6-7	TUNNEL SHIELD
PAGE 8-10	SINGLE LIFT ASSIST ASSEMBLY
PAGE 9	HUB ASSEMBLY
PAGE 10	WELD ON CAST POINT
PAGE 10	HYDRAULIC PLUMBING SINGLE LIFT ASSIST
PAGE 11	TELESCOPING REAR HITCH
PAGE 12	TOOLBAR GAUGE WHEEL
PAGE 13	WARNING LIGHT ASSEMBLY

# SERIES 1000 ROW CULTIVATOR

## ROLLING SHIELD AND ROTARY HOE WHEEL



DWG. NO. 1855

REF. NO.	PART NUMBER	DESCRIPTION	QTY.	REF. NO.	PART NUMBER	DESCRIPTION	QTY.
1	805-001-332	5/8 x 7 5/8 Inch Center U-Boly (7 x 7 Toolbar)	2	21	950-001-125	1/2 - 13 NC x 1 1/2 LG Hex HD Bolt; Grade 5	2
	81003020	5/8 x 7 5/8 Inch Center U-Bolt (5 x 7 Toolbar)	2	22	950-008-008	1/2-13 NC x 3/4 LG SQ HD Set Screw	2
2	810-002-364	Right Mount Bracket	1	23	952-001-004	1/2 Inch Lockwasher	5
3	810-002-363	Left Mount Bracket	1	24	952-001-005	5/8 Inch Lockwasher	5
4	810-001-487	Bracket Weld	2	25	952-002-005	1/2 Inch Flatwasher	2
5	810-001-497	Spring Bracket	2	26	952-004-059	9/16 x 1 3/4 x .250 Flatwasher	2
6	810-001-500	Rod	1	27	952-002-010	1 Inch Flatwasher (Rolling Shield Option Only)	5
7	850-002-403	Compression Spring	1	28	952-003-005	1 Inch Flatwasher SAE (Rolling Shield Option Only)	2
8	810-002-357	Outer Channel Weld	1	29	810-002-462	Axle Tube (Rotary Hoe Option Only)	1
9	810-001-179	Inner Channel Assembly (Includes Item 33)	1	30	810-002-461	Sleeve Axle Bearing (Rotary Hoe Option Only)	1
10	810-001-499	Left Rolling Shield Weld	1	31	515-301-012	Dust Cap	2
11	810-001-498	Right Rolling Shield Weld	1	32	810-001-591	Spacer (Rolling Shield Option Only)	4
12	810-001-490	Spacer	1	33	955-001-002	1/4 - 28 UNF Grease Fitting	1
13	810-002-361	Tube	1	34	810-002-463	Axle Spacer (Rotary Hoe Option Only)	8
14	810-001-590	Axle (Rolling Shield Only)	1	35	953-005-002	.178 x 3 9/16 Hair Pin Cotter	1
15	950-001-060	1/2 - 13 NC x 5 LG Hex Head Bolt; Grade 5	2	36	953-001-010	1/4 x 1 1/2 Cotter Pin	1
16	950-001-131	5/8 - 11 NC x 4 1/2 LG Hex Head Bolt; Grade 5	1	37	828-001-005	Lock Collar	2
17	950-001-259	1/2 - 13 NC X 8 LG Hex HD Bolt; GR. 5 (Rolling Shield Option Only)	1	38	810-001-493	Spring Cap Weld	2
18	950-001-274	1/2 - 13 NC x 10 LG Hex HD Bolt; GR. 5 (Rotary Hoe Option Only)	1	39	810-002-467	Wheel Assembly W/Washer Weld	2
19	951-001-007	1/2 - 13 NC Hex Nut	5	40	810-002-466	Washer Weld (Service Replacement Part)	4
20	951-001-008	5/8 - 11 NC Hex Nut	5				

UTOMAS

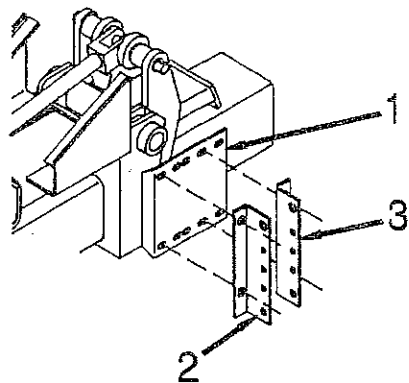
SERIES 1000 ROW CULTIVATOR

FOLDING TOOLBAR MOUNTING

8/30, 8/36-38, 12/30, 12/36-38

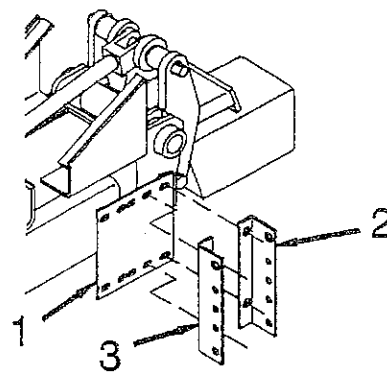
ROLLING SHIELD & ROTARY HOE WHEEL MOUNTING BRACKETS,  
WITH OR WITHOUT TELESCOPING REAR HITCH OR LIFT ASSIST

30" ALL MODELS

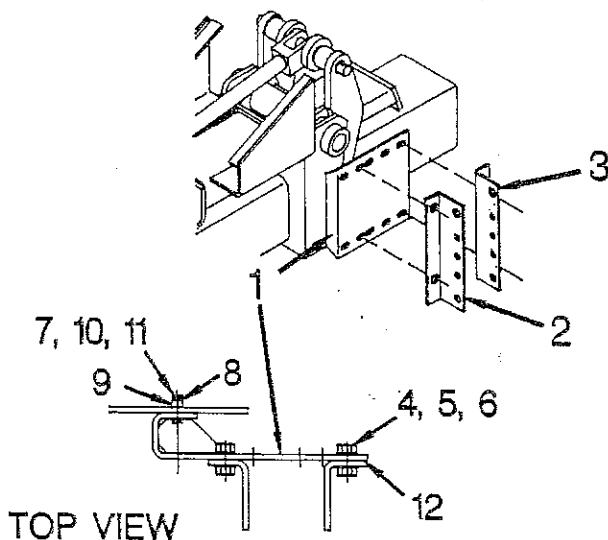


RIGHT SIDE HINGE SHOWN

36" ALL MODELS



38" 12 ROW



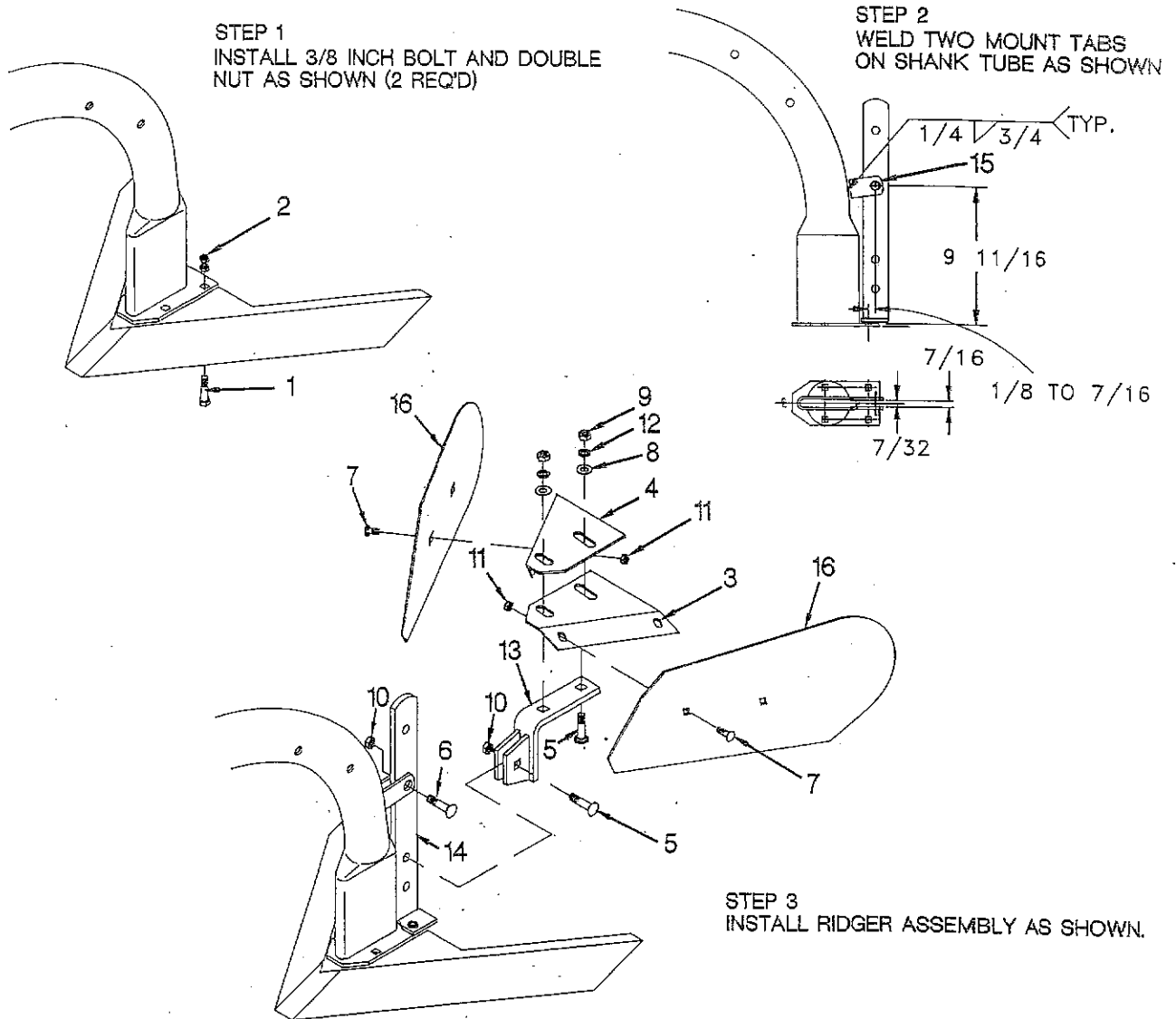
TOP VIEW

DWG. NO. 3561

REF. NO.	PART NUMBER	DESCRIPTION	QTY.	REF. NO.	PART NUMBER	DESCRIPTION	QTY.
1	810-002-311	Mount Bracket Weld	2	8	952-002-008	Flat Washer 3/4	2
2	810-002-364	RH Mount Bracket	4	9	810-002-421	Bushing	2
3	810-002-363	LH Mount Bracket	8	10	952-001-006	Lock Washer 3/4	4
4	950-001-087	Hex Head Bolt 5/8-11 UNC x 1 1/2 Lg.	16	11	951-001-009	Hex Nut 3/4-10 UNC	4
5	952-001-005	Lock Washer 5/8	A/R	12	805-001-329	Spacers*	A/R
6	951-001-008	Hex Nut 5/8-11 UNC	A/R			* Note: Spacer used to align shields over the row	
7	950-001-029	Hex Head Bolt 3/4-10 UNC	4				

# SERIES 1000 ROW CULTIVATOR

## RIDGER ASSEMBLY

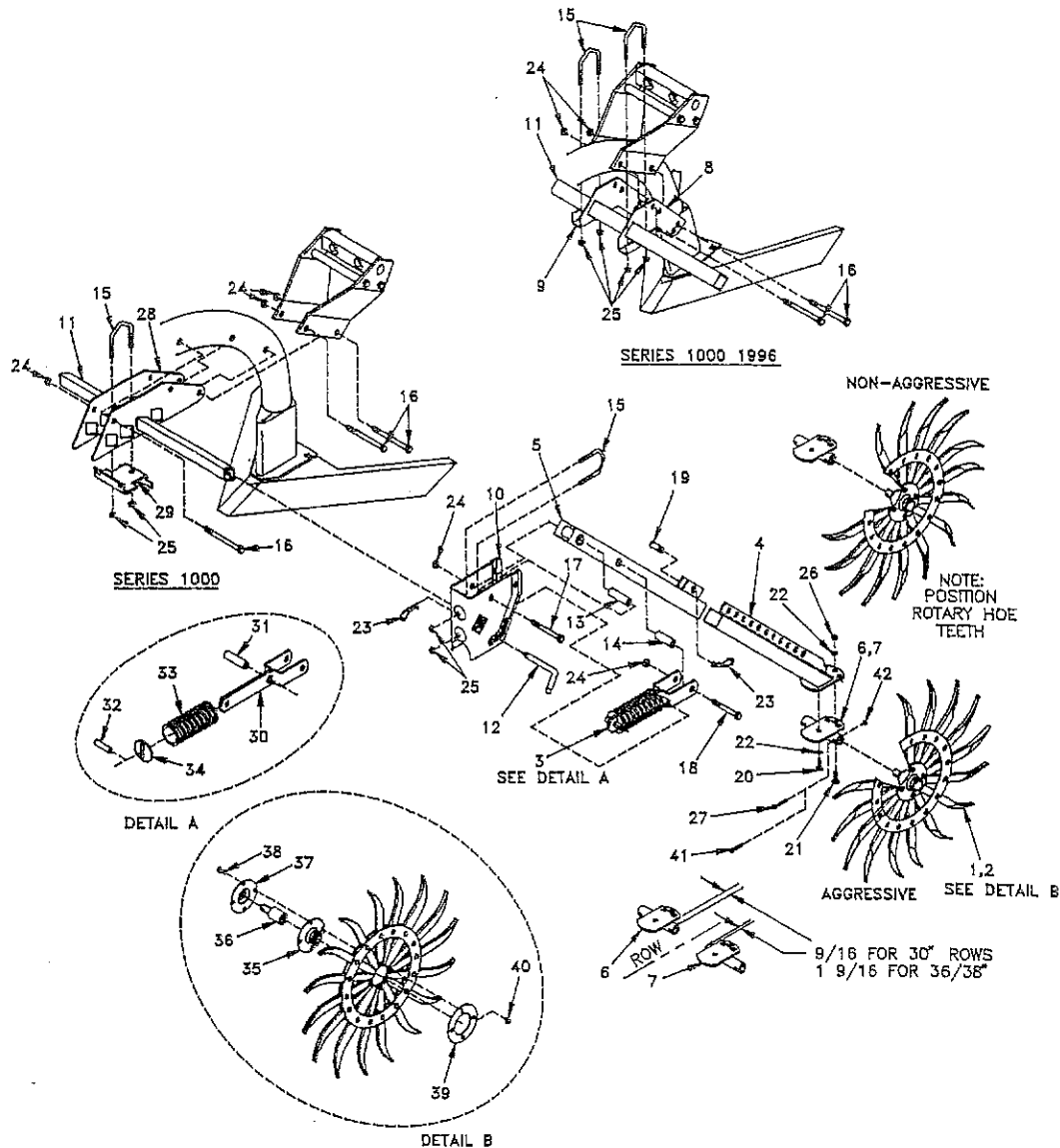


DWG. NO. 3116

REF. NO.	PART NUMBER	DESCRIPTION	QTY.	REF. NO.	PART NUMBER	DESCRIPTION	QTY.
1	950-001-108	Hex Head Cap Screw 3/8 - 16 UNC X 1 1/2 , Gr. 5	2	9	951-001-007	Hex Nut 1/2 - 13 UNC	2
2	951-001-005	Hex Nut 3/8 - 16. ZP. Gr. A	4	10	10304	Lock Nut 1/2 - 13 UNC, 2 - Way	2
3	810-002-125	LH Support	1	11	851-002-003	Whiz Flange Nut 3/8	4
4	810-002-126	RH Support	1	12	952-001-004	Lock Washer, 1/2 Inch	2
5	030-16132	Carriage Bolt 1/2 - 13 UNC X 1 1/2, Gr. 5	3	13	81004143	Ridger Support Weld	1
6	950-003-025	Carriage Bolt 1/2 - 13 UNC X 2, Gr. 5	1	14	81004422	Support Weld	1
7	030-16067	Carriage Bolt 1/2 - 13 UNC X 3/4, Gr. 5	4	15	81003277	Mount Tab	2
8	952-006-059	Flat Washer 9/16 x 1 3/4 x .25	2	16	810-002-124	Ridger Wings	2

SERIES 1000 ROW CULTIVATOR

CUTAWAY ROTARY HOE SHIELD



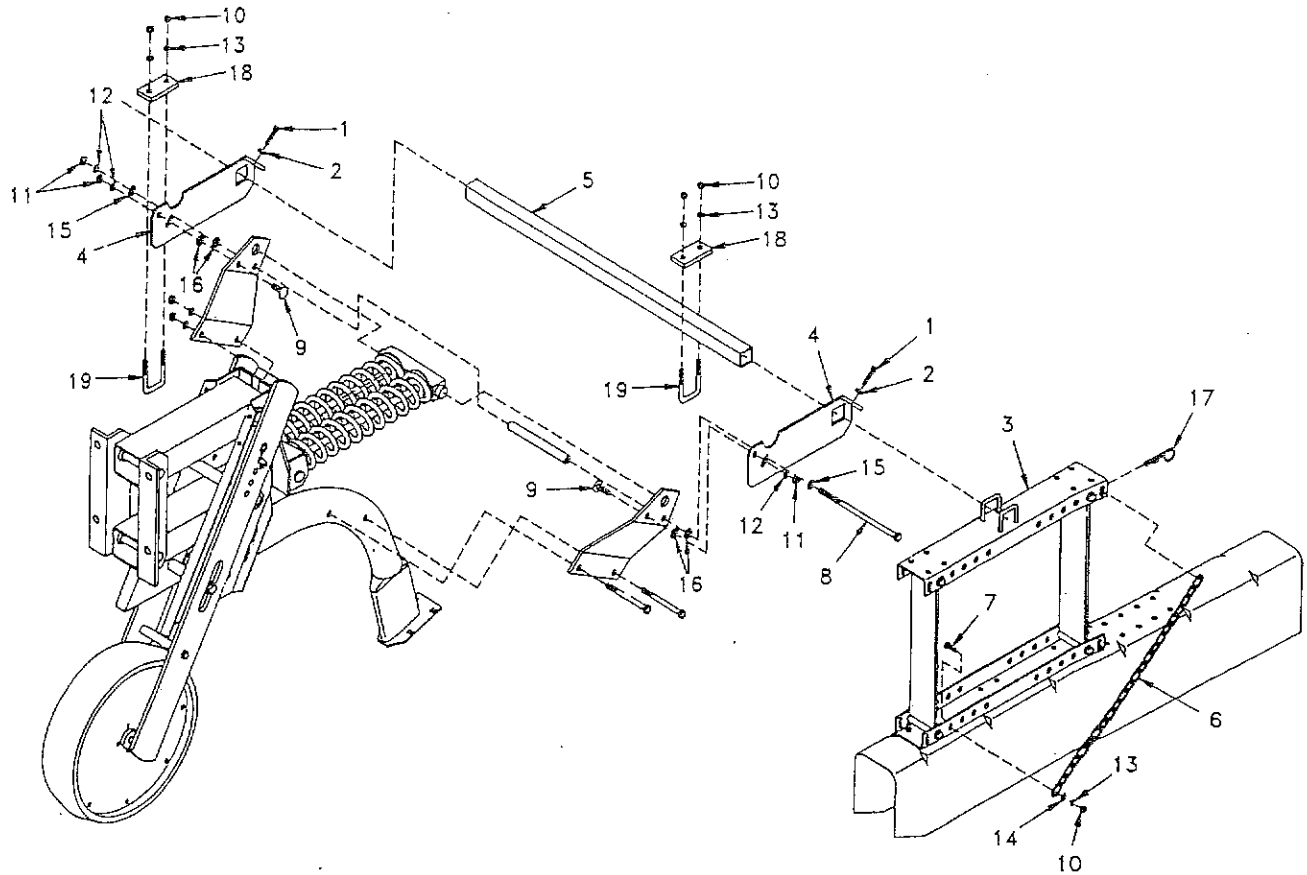
DWG. NO. 3228

REF. NO.	PART NUMBER	DESCRIPTION	QTY.	REF. NO.	PART NUMBER	DESCRIPTION	QTY.
1	81004573	RH Wheel Assembly	1	21	950-003-029	Bolt - Cge 3/8 16 x 1 Gr. #5	2
2	81004574	LH Wheel Assembly	1	22	952-001-007	Washer - Lk 3/8 Med. Split SAE	4
3	81004578	Spring Assembly	2	23	953-003-001	Hair Pin .120 x 2 3/8	4
4	81004649	Inner Mount Tube Weld	2	24	10304	Nut - Lock 1/2 - 13 UNC	6
5	81004652	Tube Weld	2	25	951-002-003	Nut - FL Wzlk 3/8 - 16	8
6	81004583	RH Bottom Plate Weld	1	26	951-001-005	Nut - Hex 3/8 - 16	2
7	81004584	LH Bottom Plate Weld	1	27	035-42065	Cotter Pin 1/4 x 1 3/4 PL (Replaced By 41 & 42)	2
8	81004654	RH Mount Plate (1996 Only)	1	28	81003338	Cutaway Mount Plate (1997 - )	2
9	81004653	LH Mount Plate (1996 Only)	1	29	81003339	Clamp Plate (1997 - )	1
10	81004569	Mounting Channel	2	30	81004581	Guide Strap	2
11	81004582	Mount Tube (22" Narrow Row)	1	31	81004580	Spacer	1
	81004650	Mount Tube (28" Wide Row)	1	32	953-003-019	Spring Pin 1/2 x 2	1
12	81004549	Pin	2	33	81004078	Compression Spring	1
13	81004571	Inner Tube	2	34	81004570	Washer	2
14	81004577	Spacer	2	35	81004217	Hub Flange	1
15	81004572	Diagonal U-Bolt	4	36	81004333	Shaft Bearing	1
16	950-001-126	HHCS 1/2 - 13 x 4 1/2 Gr. #5	3	37	81004216	Hub Flange w/Hole	1
17	950-001-142	HHCS 1/2 - 13 x 3 1/2 Gr. #5	2	38	950-002-007	Bolt - HHFL Wzlk 5/16 - 18 x 1	4
18	950-001-075	HHCS 1/2 - 13 x 3 Gr. #5	2	39	81004565	Disc Wheel Center	1
19	953-003-034	Clevis Pin 1/2 x 1 1/4	2	40	951-002-002	5/16 Whiz Nut	4
20	950-001-105	HHCS 3/8 - 16 x 1 Gr. #5	2	41	031-08007	HHCS, 1/4 - 20 UNC x 1 1/4 Gr. 5	4
				42	951-005-089	2-Way Locknut, 1/4 - 20 UNC	4

GOMG

# SERIES 1000 ROW CULTIVATOR

## TUNNEL SHIELD MOUNTING



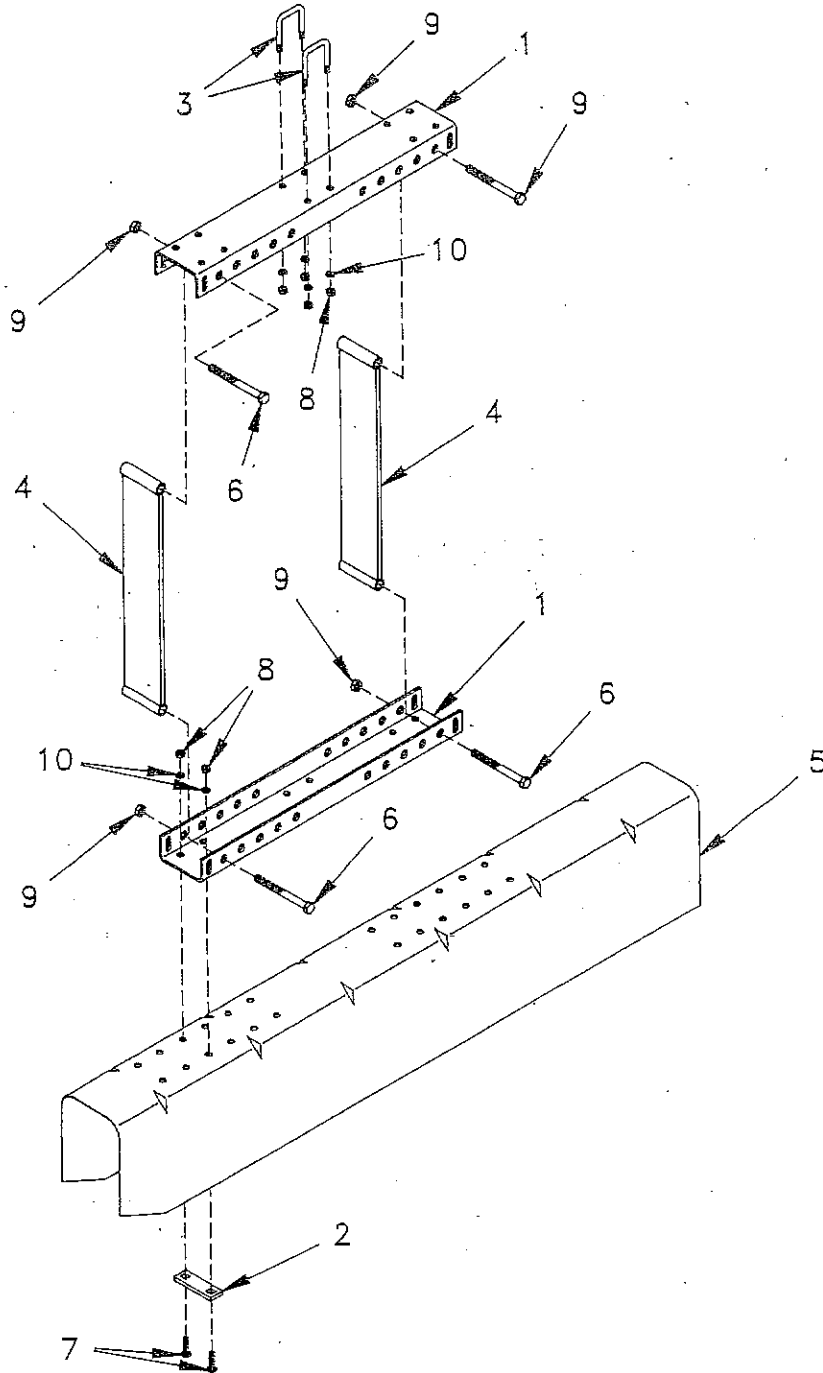
**GTMS**

DWG. NO. 3124

REF. NO.	PART NUMBER	DESCRIPTION	QTY.	REF. NO.	PART NUMBER	DESCRIPTION	QTY.
1	031-21035	Set Scr-Sq Hd 3/8 - 16 x 1 3/4 Cup	2	11	951-001-007	Nut - Hex 1/2 - 13	2
2	034-05117	Nut-Hex Jm 3/8 Unc Pl	2	12	952-001-004	Washer - Lk 1/2 Med Split SAE	2
3	81004666	Tunnel Shield Assembly 48"	2	13	952-001-007	Washer - Lk 3/8 Med Split SAE	6
4	81004669	Mount Plate Weld	2	14	952-002-003	Washer - Flat 3/8 Wrt	2
5	81004671	Mount Tube 30" Rows	1	15	952-002-005	Washer - Flat 1/2 Wrt	2
6	81004677	Chain	2	16	952-004-057	Washer - Lk 1/2 Int - Ext	4
7	950-001-105	HHCS 3/8 - 16 x 1 Gr. #5	2	17	953-005-002	Pin - Hair Cotter .178 x 3 9/16	2
8	950-001-268	HHCS 1/2 - 13 x 9 Gr. #8	1	18	81004797	Support Plate	2
9	950-004-007	Scr - Rd Hd Socket 1/2 - 13 x 1 1/4	2	19	810-001-650	3/8 x 1 7/8 Center U-Bolt	2
10	951-001-005	Nut - Hex 3/8 - 16	2				2

# SERIES 1000 ROW CULTIVATOR

## TUNNEL SHIELD ASSEMBLY



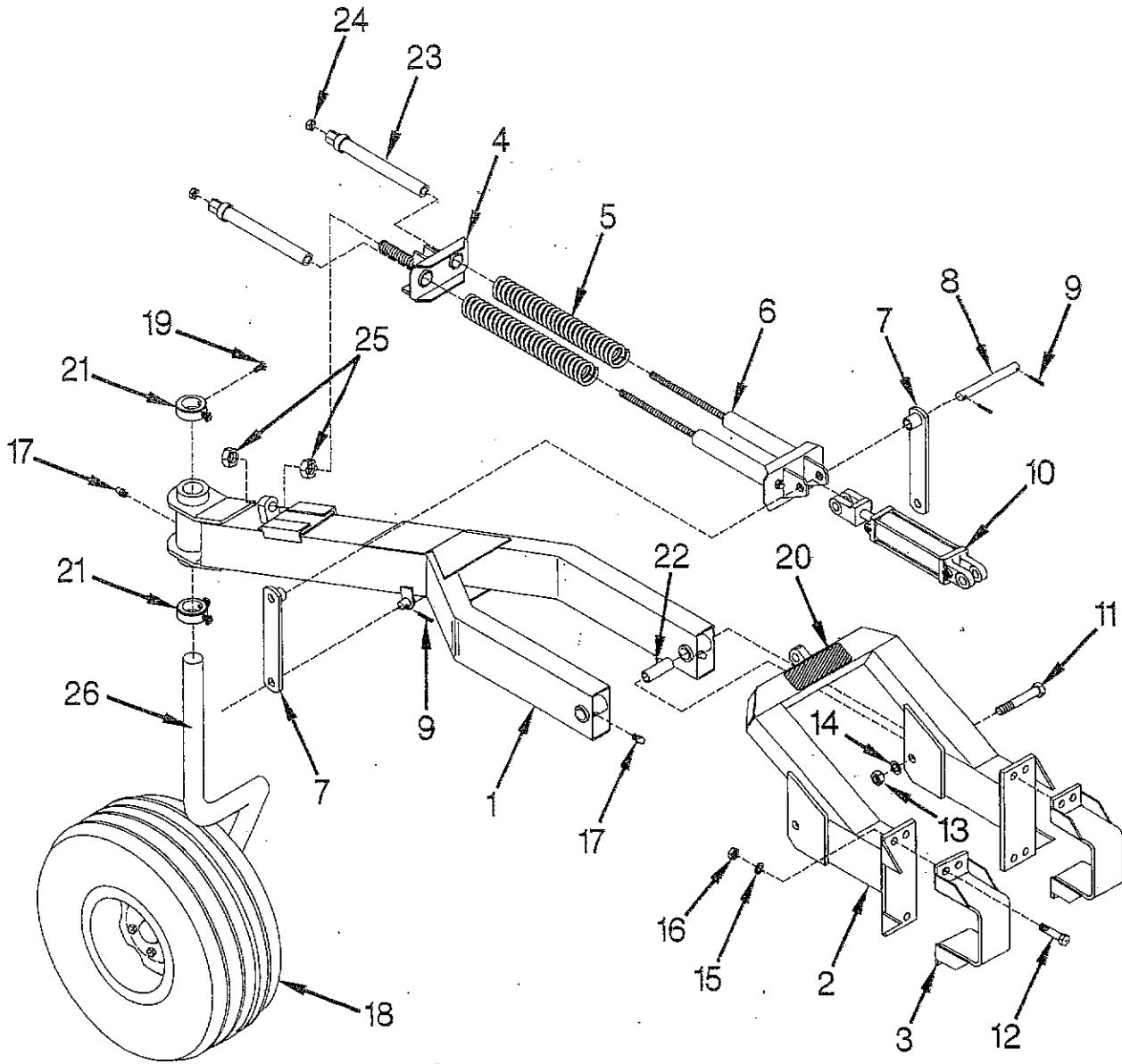
DWG. NO. 3118

REF. NO.	PART NUMBER	DESCRIPTION	QTY.	REF. NO.	PART NUMBER	DESCRIPTION	QTY.
1	810-001-640	Tunnel Channel	2	6	950-001-124	1/2 - 13 x 4 Hex Hd Bolt Gr. #5	4
2	810-001-649	Reinforcement Strap	2	7	950-003-029	3/8 - 16 UNC x 1 Carr. Bolt	4
3	810-001-650	3/8 x 1 - 7/8 Center U - Bolt	2	8	951-001-005	3/8 - 16 UNC Hex Nut	8
4	81004665	Pivot Strap	2	9	951-005-023	1/2 - 13 UNC Mac Lock Nut	4
5	81004670	Tunnel Shield 48"	2	10	952-001-007	Washer - Lk 3/8 Med. Split SAE	8

CROSS

**SERIES 1000 ROW CULTIVATOR**

**SINGLE LIFT ASSIST ASSEMBLY**



**5016**

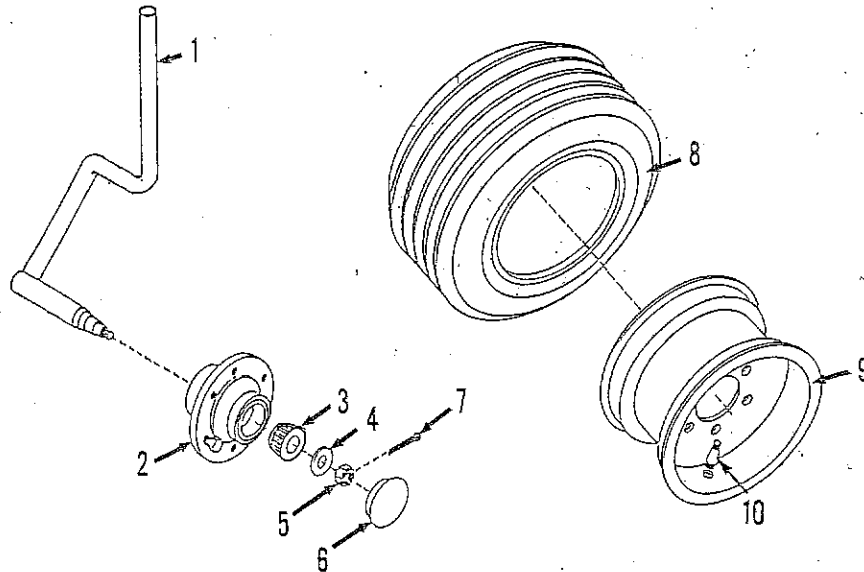
DWG. NO. 2883

REF. NO.	PART NUMBER	DESCRIPTION	QTY.	REF. NO.	PART NUMBER	DESCRIPTION	QTY.
1	81002664	Rear Mast Weld	1	15	952-001-008	Lock Washer 7/8 Inch	8
2	81004203	Front Mast Weld	1	16	951-001-010	Hex Nut 7/8-9 UNC	8
3	81004153	Mount Strap Weld	2	17	955-001-001	Grease Fitting	3
4	81002661	Rear Guide Weld	1	18	850-001-568	Tire And Rim Assembly 9.5Lx15 (See Sect. 5 Pg. 9)	1
5	880-001-071	Compression Spring	2	19	950-008-009	Square Head Set Screw 1/2-13 UNCx1"	4
6	81002660	Front Guide Weld	1	20	81002607	Caution Decal	1
7	81002647	Link Arm Weld	2	21	805-001-105	Stem Collar	2
8	81002648	Cylinder Arm Pin	1	22	810-002-188	Sleeve	2
9	953-003-017	Spring Pin 5/16x2	4	23	81002655	Spring Guide Weld	2
10	81004503	Hydraulic Cylinder 3x8 (See Sect. 3 Page 6)	1	24	034-05173	Uni-Torque Lock Nut 3/4-10 UNC	2
11	950-001-186	Hex Head Cap Screw 1"-8 UNCx6 Gr. 5	2	25	951-001-022	Hex Nut 1-1/4-7 UNC	2
12	950-001-168	Hex Head Cap Screw Flts 7x7	8	26		Caster Stem Spindle And Hub Ass'y (See Sect. 5 Pg. 9)	2
	950-001-210	Hex Hd Cap Screw 7/8x10 Gr. 5 Fits TWIN 5x7	8				
13	951-001-024	Hex Nut 1"-8 UNC	2				
14	952-001-009	Lock Washer 1 Inch	2	6013		Complete Single Lift Assist	



# SERIES 1000 ROW CULTIVATOR

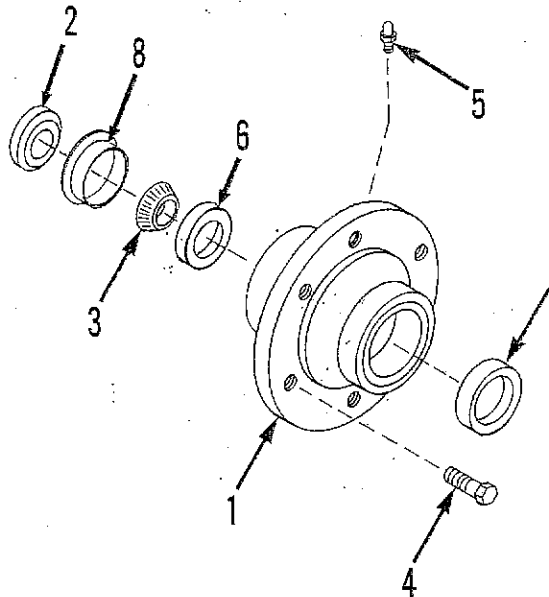
## HUB & SPINDLE/TIRE & RIM



DWG. NO. 3014

REF. NO.	PART NUMBER	DESCRIPTION	QTY.	REF. NO.	PART NUMBER	DESCRIPTION	QTY.
1	805-001-096	Axle Weld	1	6	850-001-155	Hub Cap	1
2		Hub Sub-Assembly (See Below)	1	7	953-001-017	Cotter Pin 5/32x1-1/2	1
3	850-001-153	Outer Bearing Cone LM 67048	1	8	850-001-004	Tire-6 Ply 9.5Lx15"	1
4	802-000-007	Washer	1	9	850-001-093	Rim-6 Bolt 8 LB.x15"	1
5	951-005-002	Slotted Nut 7/8-14 UNF	1	10	850-001-396	Tire Valve	1

## HUB SUB-ASSEMBLY



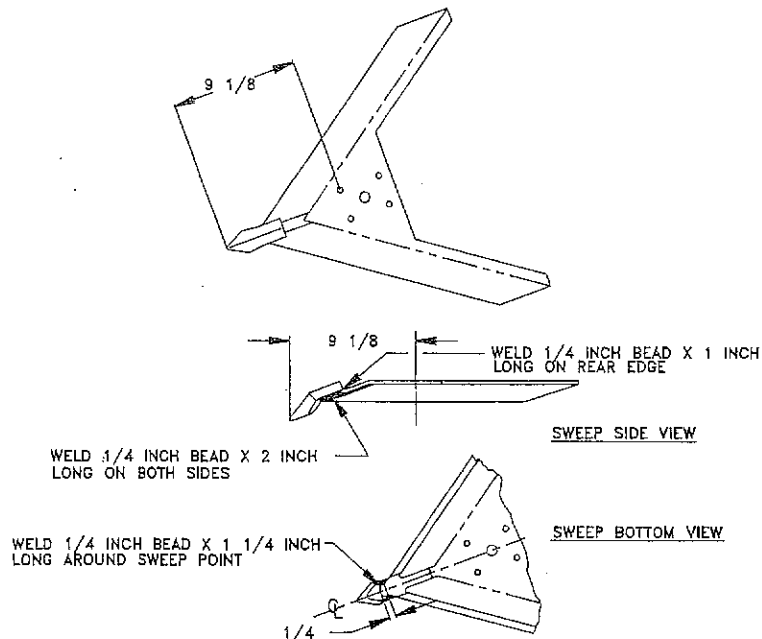
DWG. NO. 1698

REF. NO.	PART NUMBER	DESCRIPTION	QTY.	REF. NO.	PART NUMBER	DESCRIPTION	QTY.
1	850-001-157	Hub Ass'y W/Bearing Cups	1	5	955-001-001	Grease Fitting	1
2	850-001-164	Seal Triple Lip C/R #16286	1	6	850-001-159	Inner Bearing Cup JL 69310	1
3	850-001-154	Inner Bearing Cone JL69349	1	7	850-001-158	Outer Bearing Cup LM 67010	1
4	950-011-006	Wheel Bolt 1/2x1"	6	8	850-001-555	Wear Sleeve	1

JCS

# SERIES 1000 ROW CULTIVATOR

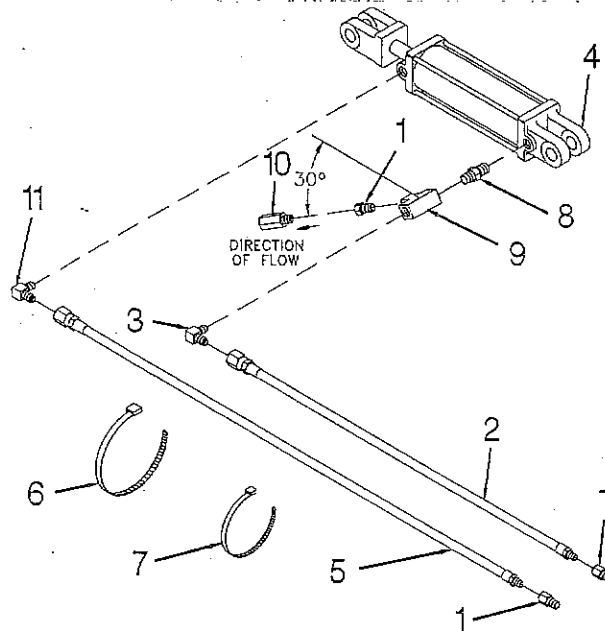
## WELD ON CAST POINT



DWG. NO. 3117

REF. NO.	PART NUMBER	DESCRIPTION	QTY.	REF. NO.	PART NUMBER	DESCRIPTION	QTY.
1	81003270	Auxiliary Cast Point Kit	A/R				

## HYDRAULIC PLUMBING SINGLE LIFT ASSIST WHEEL

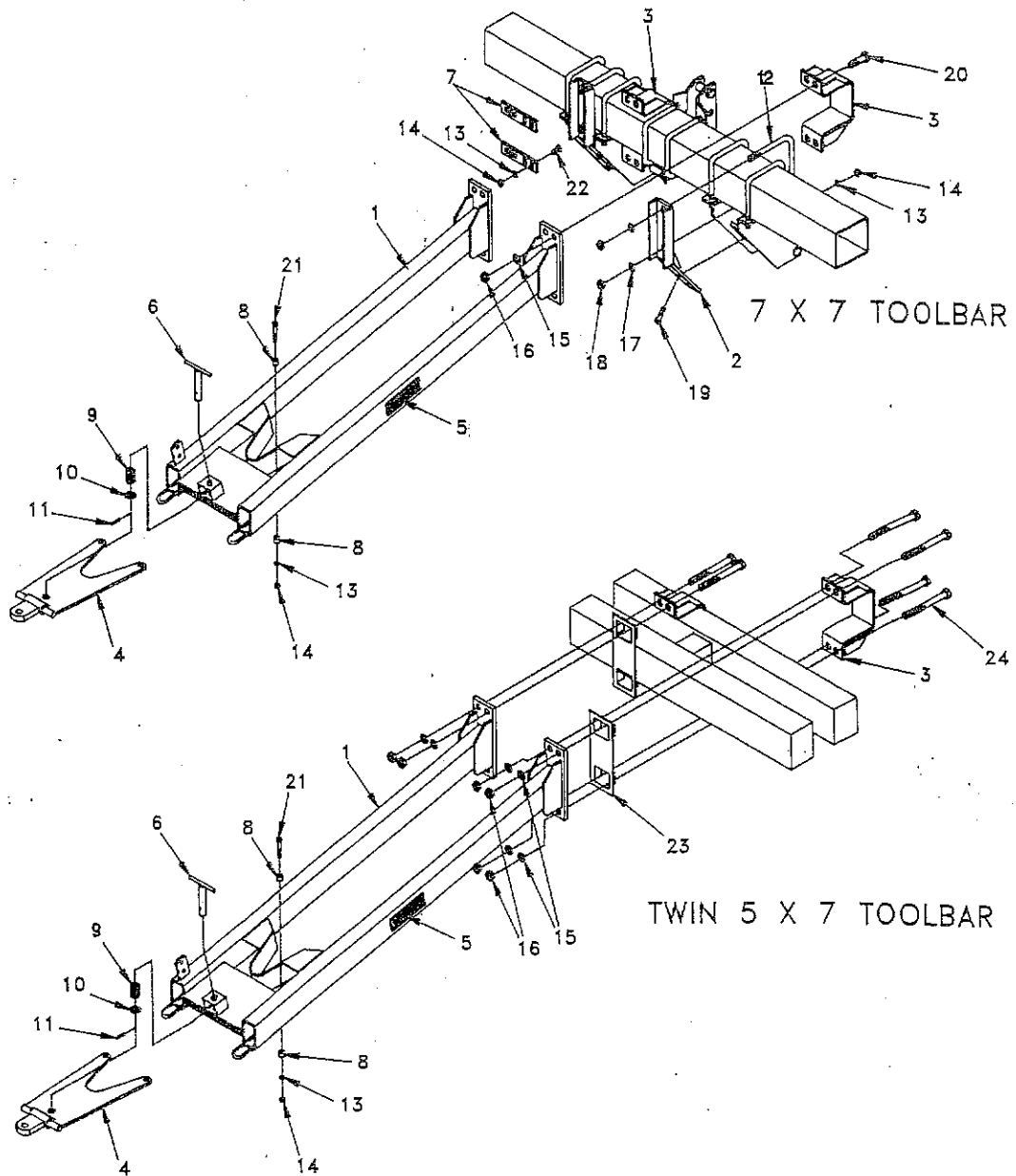


DWG. NO. 2861A

REF. NO.	PART NUMBER	DESCRIPTION	QTY.	REF. NO.	PART NUMBER	DESCRIPTION	QTY.
1	956-004-002	Reducer Bushing 1/2-14 Male NPT To 3/8-18 Female NPT	3	6	921-001-145	Plastic Cable Tie 21 Inch Lg.	3
2	957-002-015	Hose Assembly 3/4x108 Inch Lg.	1	7	921-001-144	Plastic Cable Tie 14 Inch Lg.	3
3	956-005-003	Elbow 90 Degree 1/2-14 Male NPT To 9/16-18 Male 37 Degree JIC	1	8	956-003-020	Straight Adapter 3/4-16 O-Ring To 1/2-14 Male NPT	1
4	81004503	Cylinder 3x8, 3/4-16 O-Ring Ports (See Sect. 3B Pg. 6)	1	9	956-007-002	Tee 1/2-14 Female NPT	1
5	957-002-016	Hose Assembly 3/8x126 Inch Lg.	1	10	956-008-022	Relief Valve 3/8-18 Female NPT	1
				11	956-005-001	Elbow 90 Degree, 3/4-16 O-Ring To 9/16-18 Male 37 Degree JIC	1

# SERIES 1000 ROW CULTIVATOR

## TELESCOPING REAR HITCH



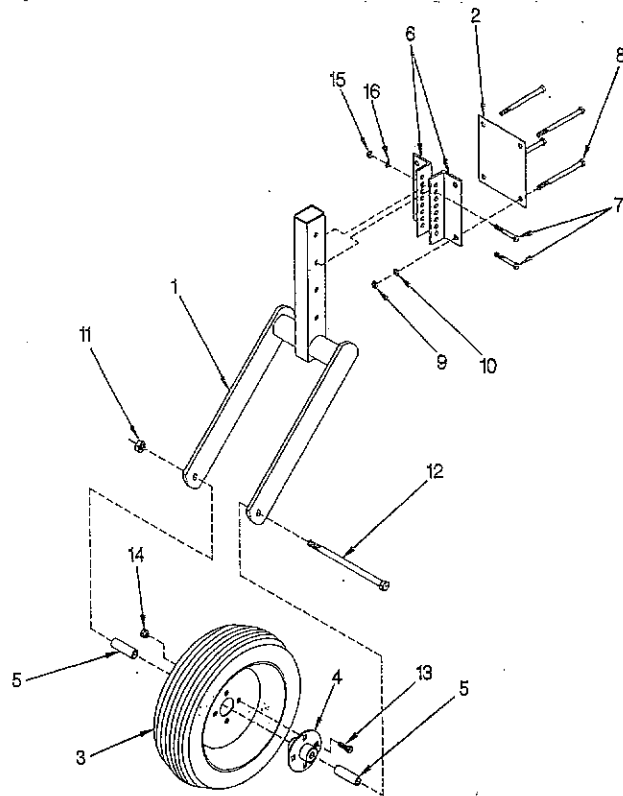
DWG. NO. 2862

REF. NO.	PART NUMBER	DESCRIPTION	QTY.	REF. NO.	PART NUMBER	DESCRIPTION	QTY.
1	81004163	Hitch Weld	1	14	951-001-008	Hex Nut, 5/8-11 UNC	14
2	810-002-212	Support Weld	2	15	952-001-008	Lockwasher, 7/8 Inch	14
3	81004153	Mount Strap Weld	2	16	951-001-010	Hex Nut, 7/8-9 UNC	8
4	81004161	Hitch Plate Weld	1	17	952-001-006	Lockwasher, 3/4 inch	8
5	81004136	Decal	2	18	951-001-009	Hex Nut, 3/4-10 UNC	4
6	810-001-522	Handle Weld	1	19	950-001-147	HHCS 5/8-11 UNCx2 1/2 Gr. 5	4
7	810-001-551	Shield Mount Strap (Used With Rotary Hoe Wheel & Rolling Shields)	4	20	950-001-168	HHCS 7/8-9 UNCx3 Gr. 5	8
8	810-001-526	Collar	4	21	950-001-210	HHCS 7/8x10 Gr. 5 Fits TWIN 5x7	8
9	810-001-527	Spring	1	22	950-001-141	HHCS 5/8-11 UNCx3 Gr. 5	2
10	952-002-010	Flat Washer, 1 Inch	1	23	950-003-021	Carriage Bolt, 5/8-11 UNCx1 1/4 Gr. 2	8
11	953-003-003	Spring Pin, 1/4x1 3/4	1	24	81004690	Lock Plate	2
12	875-001-038	U-Bolt	1	24	950-001-210	HHCS 7/8 - 9 UNC x 10, Gr. 5	8
13	952-001-005	Lockwasher, 5/8 Inch	2		81004116	Complete Hitch Ass'y	8

HHCS

**SERIES 1000 ROW CULTIVATOR**

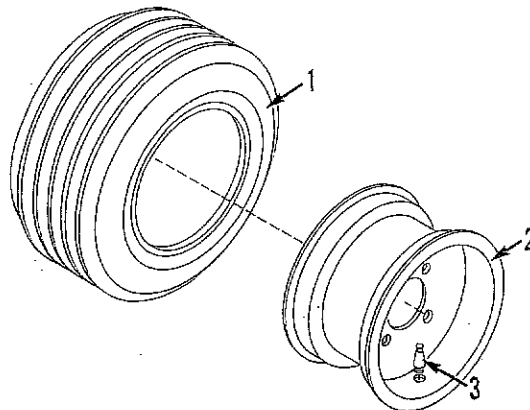
**TOOLBAR GAUGE WHEEL**



DWG. NO. 2448

REF. NO.	PART NUMBER	DESCRIPTION	QTY.	REF. NO.	PART NUMBER	DESCRIPTION	QTY.
1	81003075	Mast Weld	1	9	951-001-008	Hex Nut, 5/8 - 11 UNC	4
2	81003256	Backing Plate	1	10	952-001-005	Lockwasher, 5/8 Inch	4
3	81003095	Tire & Rim Assembly	1	11	951-005-037	2-Way Locknut, 3/4 - 10 UNC	1
4	810-002-100	Hub w/Bearing Assembly (Replaced by 81003521)	1	12	950-001-273	HHCS, 3/4 - 10 UNC x 12 GR. 5	1
4A	81003521	Hub w/Bearing Assembly (Replaces 810-002-100)	1	13	950-001-101	HHCS, 1/2 - 20 UNF x 1 1/4 GR. 5	4
5	81003076	Tube	2	14	700-81067	Wheel Nut, 1/2 - 20 UNF	4
6	81003255	Mast Mount Angle	2	15	951-001-007	Hex Nut, 1/2 - 12 UNC	2
7	031-06212	HHCS, 1/2 - 13 UNC x 3 1/4 GR. 5	2	16	952-001-004	Lockwasher, 1/2 Inch	2
8	950-001-143	HHCS, 5/8 - 11 UNC x 7 GR. 5	4				

**TIRE AND RIM ASSEMBLY (20.5 X 8 X 10)**



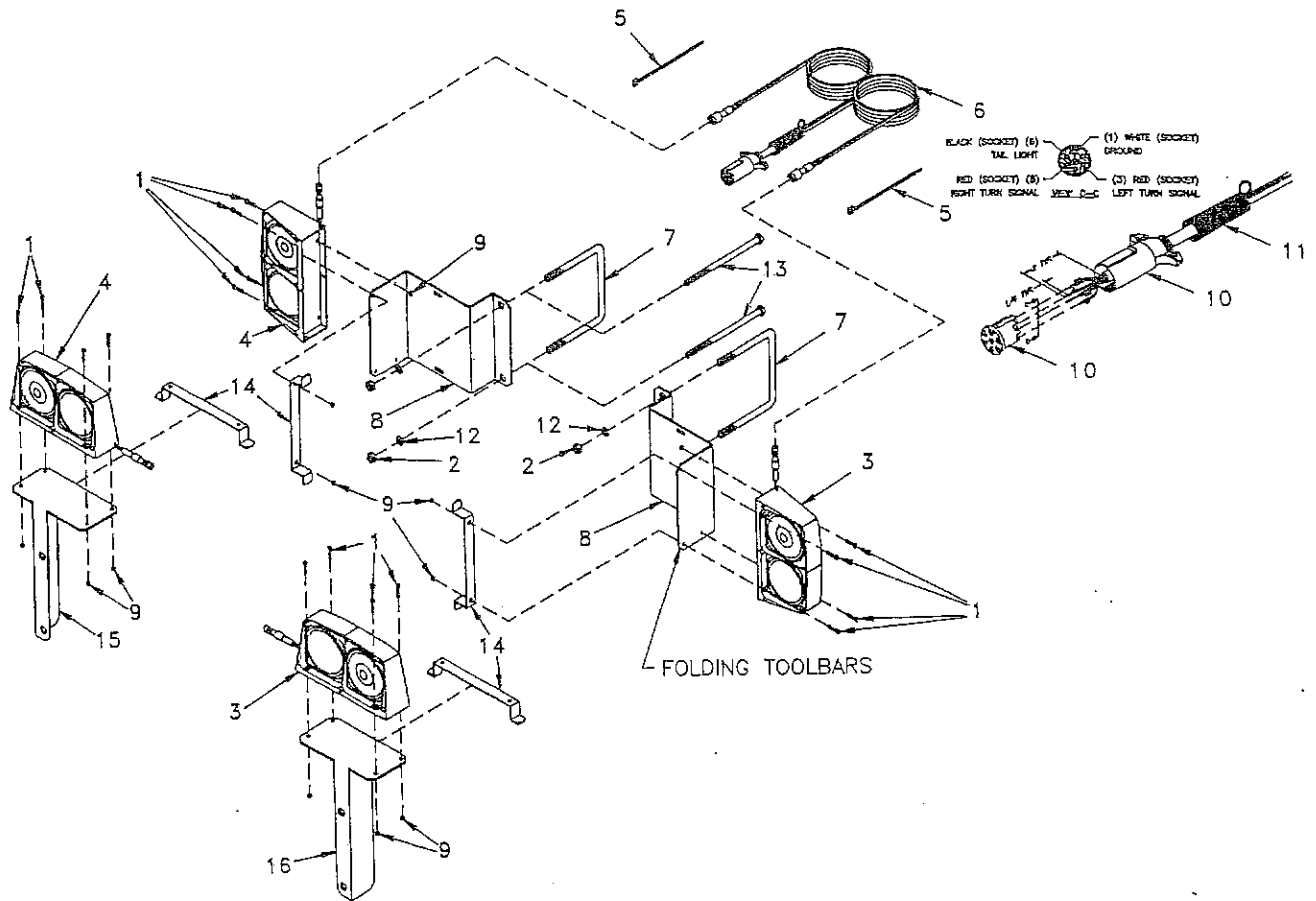
DWG. NO. 2435

REF. NO.	PART NUMBER	DESCRIPTION	QTY.	REF. NO.	PART NUMBER	DESCRIPTION	QTY.
1	875-001-176	20.5/8 x 10 Tire	1	3	850-001-396	Tire Valve	1
2	81003106	6 x 10 Rim - 4 Bolt	1				

5000

# SERIES 1000 ROW CULTIVATOR

## WARNING LIGHT KIT 1000 ROW CROP CULTIVATOR



DWG. NO. 3601

REF. NO.	PART NUMBER	DESCRIPTION	QTY.	REF. NO.	PART NUMBER	DESCRIPTION	QTY.
1	031-06007	HHCS 1/4 UNC x 1 1/4 Gr. 5 PL	8	10	38450002	Connector Plug 7 Pin	1
2	951-001-230	Nut 5/8 UNC PL	4	11	38400004	Strain Relief Spring	1
3	36100000	Light, Implement, LH Assy	1	12	952-001-005	Washer - LK 5/8 Med	8
4	36100001	Light, Implement, RH Assy	1	13	950-001-230	HHCS 5/8-11 x 9 1/2 Gr. 5	4
5	921-001-145	Cable Tie, Black 21 Inch	16	14	624960	Cord Carrier	2
6	38809029	Harness, Lighting, Cult 16' (Includes 10 & 11)	1	15	81003527	RH Warning Light Bracket	1
7	81003020	5/8 U-Bolt 7 5/8 Center	2	16	81003528	LH Warning Light Bracket	1
8	81003404	Warning Light Bracket	2	17	81003529	Instruction Warning Lights (Not Shown)	1
9	034-05150	Locknut Stover 1/4	8				