

HINIKER 1700 SHREDDER PARTS BOOK

| | |
|------------------|---------------------------|
| SECTION 1 | PTO SHAFTS |
| SECTION 2 | GEARBOX |
| SECTION 3 | HITCH ASSEMBLIES |
| SECTION 4 | BODY ASSEMBLIES |
| SECTION 5 | COMPONENT PARTS |
| SECTION 6 | OPTIONAL EQUIPMENT |

PARTS

It is the policy of Hiniker Company to constantly improve its products whenever it is practical to do so.

Hiniker Company must therefore reserve the right to redesign or change its equipment or component parts thereof without incurring the obligation to install or furnish such changes on the equipment previously delivered.

INSTRUCTIONS FOR ORDERING PARTS

1. The reference numbers (Ref. No.) in the illustrations correspond to the same reference numbers (Ref. No.) in the description list. An assembly having a part number can be ordered. All other parts must be ordered individually. The quantity in the (Qty.) column is the number of parts used in this area of the machine. The term "A/R" for number required indicates "as required" where the quantity may vary. Order all parts by their part number and description. Do not use the reference number (Ref. No.).
2. All references to left and right, front and rear apply to the machine as viewed from the rear of the machine, facing forward in the direction of travel.
3. Always mention the identification number of the model and serial numbers found on the name plate of the unit on which the part is to be used. Much delay and confusion can be avoided when correct numbers are specified on parts order and correspondence.

HINIKER COMPANY
58766 240th St.
P.O. BOX 3407
MANKATO, MN 56002-3407 USA
Phone: (800) 433-5620
Fax: (800) 637-3991
e-mail: hiniker@hiniker.com

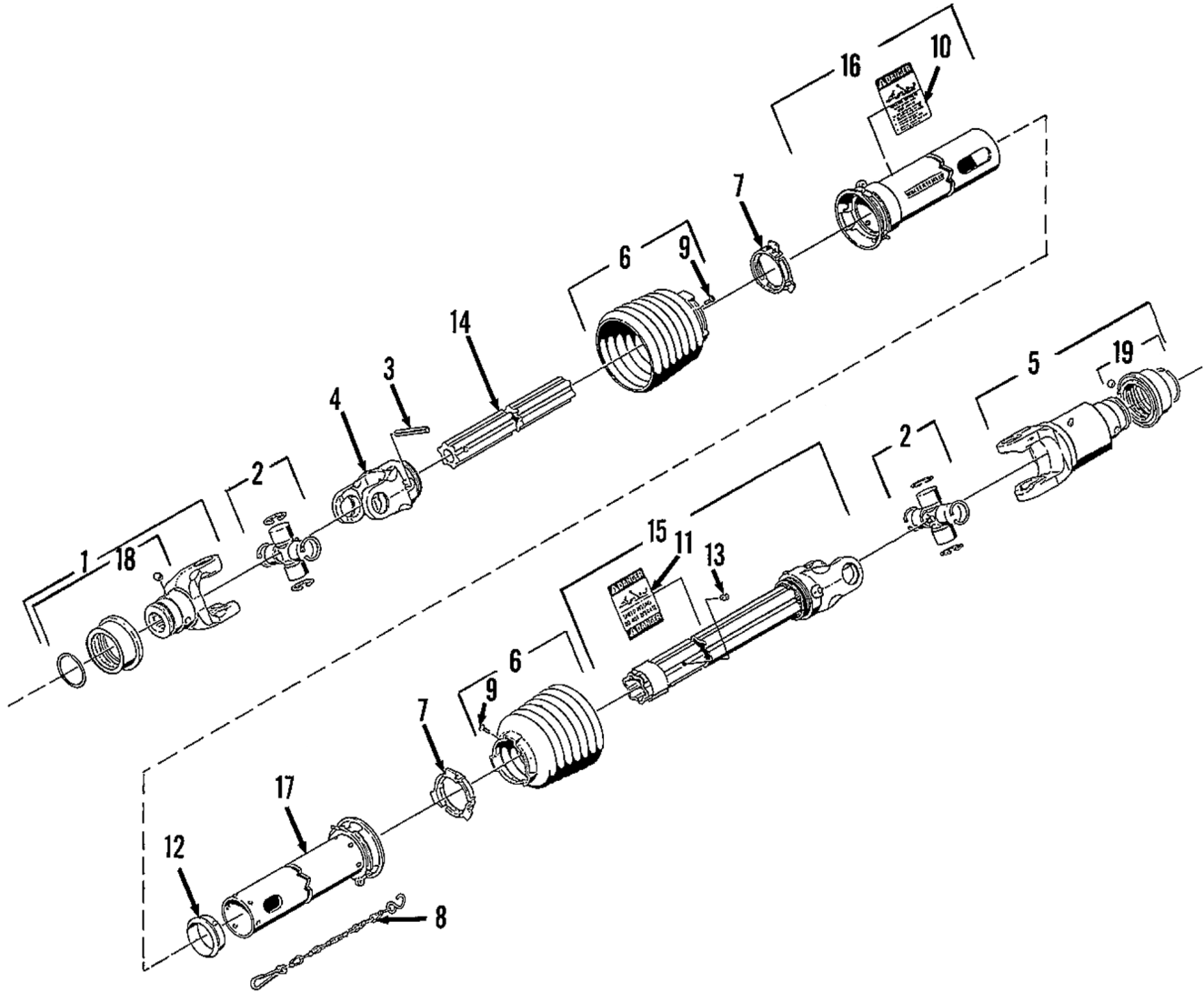
SECTION 1

PTO SHAFTS

| | |
|----------------|--|
| PAGE 2 | 3-POINT HITCH PTO 1 3/8-21 (YELLOW) SHIELDS |
| PAGE 3 | 3-POINT HITCH PTO 1 3/8-21 (BLACK) SHIELDS |
| PAGE 4 | 3-POINT HITCH PTO 1 3/4-20 (YELLOW) SHIELDS |
| PAGE 5 | 3-POINT HITCH PTO 1 3/4-20 (BLACK) SHIELDS |
| PAGE 6 | 1 3/8-21 1000 RPM CV PTO (YELLOW SHIELDS) |
| PAGE 7 | 1 3/4-20 1000 RPM CV PTO (YELLOW SHIELDS) |
| PAGE 8 | 1 3/8-21 1000 RPM CV PTO (BLACK SHIELDS) |
| PAGE 9 | 1 3/4-20 1000 RPM CV PTO (BLACK SHIELDS) |
| PAGE 10 | OVERRUNNING CLUTCH, 1000 RPM |

HINIKER 1700 SHREDDER

3 POINT HITCH PTO 1 3/8-21
(YELLOW SHIELDS)

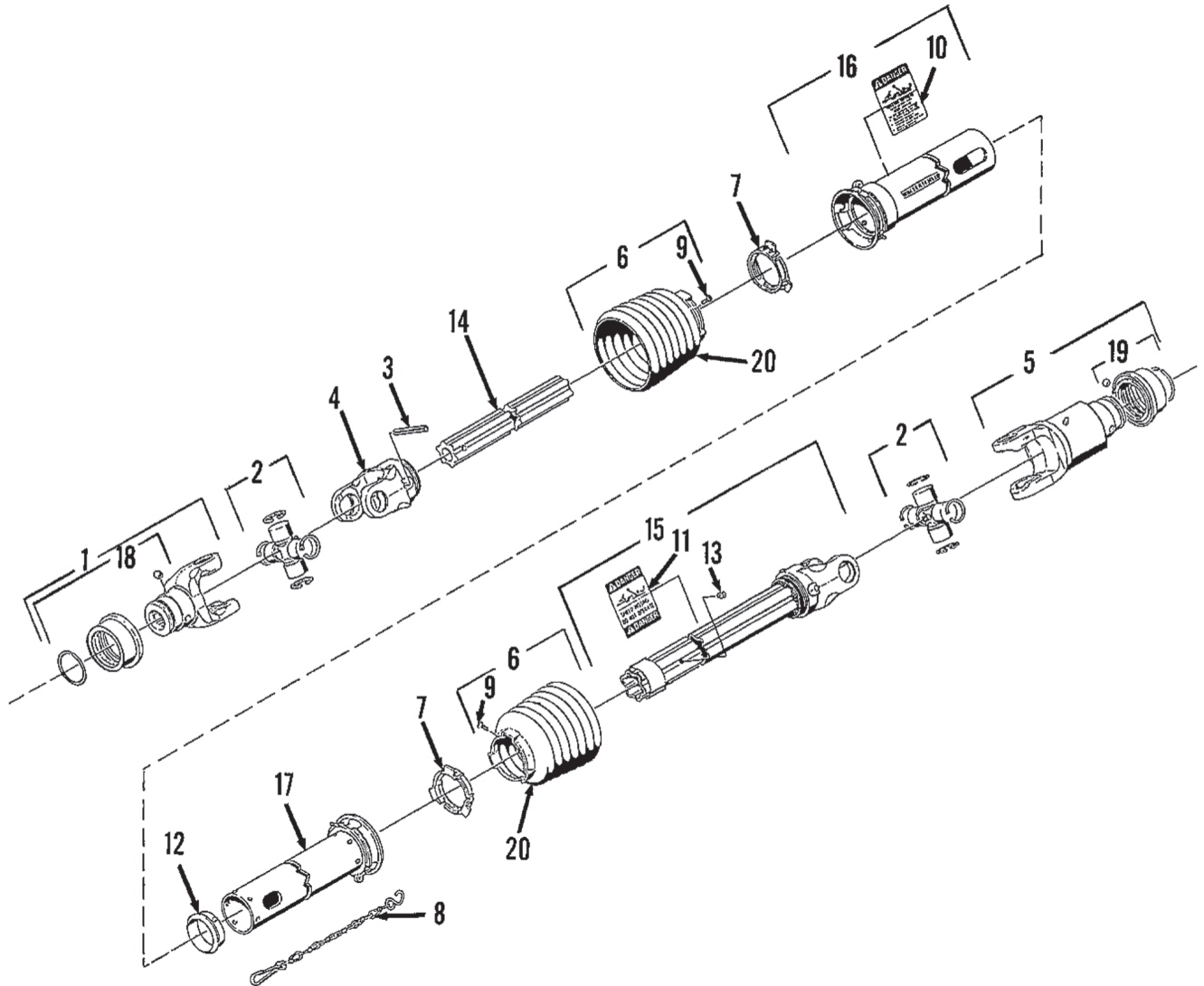


520-02157 3-Point PTO Shaft Assembly

DWG. NO. 2509

| REF. NO. | PART NUMBER | DESCRIPTION | QTY. | REF. NO. | PART NUMBER | DESCRIPTION | QTY. |
|----------|-------------|------------------------|------|----------|-------------|--|------|
| 1 | 520-03158 | Yoke 1 3/8 - 21 Spline | 1 | 11 | 520-03139 | Inner Decal | 1 |
| 2 | 520-03128 | Cross & Bearing Kit | 2 | 12 | 520-03136 | Support Bearing | 1 |
| 3 | 520-03124 | Spring Pin 10 x 90 | 1 | 13 | 520-03140 | Grease Zerk | 1 |
| 4 | 520-03159 | Inboard Yoke | 1 | 14 | 520-03165 | Inner Profile | 1 |
| 5 | 520-03118 | Overrunning Clutch | 1 | 15 | 520-03162 | Inboard Yoke, Outer Profile And Sleeve | 1 |
| 6 | 520-03134 | Shield Cone 7 Rib | 2 | 16 | 520-03163 | Outer Shield Tube | 1 |
| 7 | 520-03129 | Bearing Ring | 2 | 17 | 520-03164 | Inner Shield Tube | 1 |
| 8 | 520-03137 | Chain | 1 | 18 | 520-03141 | Collar Kit | 1 |
| 9 | 520-03135 | Screw | 2 | 19 | 520-03142 | Collar Kit | 1 |
| 10 | 520-03138 | Outer Decal | 1 | | 520-02157 | Complete PTO Shaft Assembly | |

3-POINT HITCH PTO 1 3/8-21
(BLACK SHIELDS)



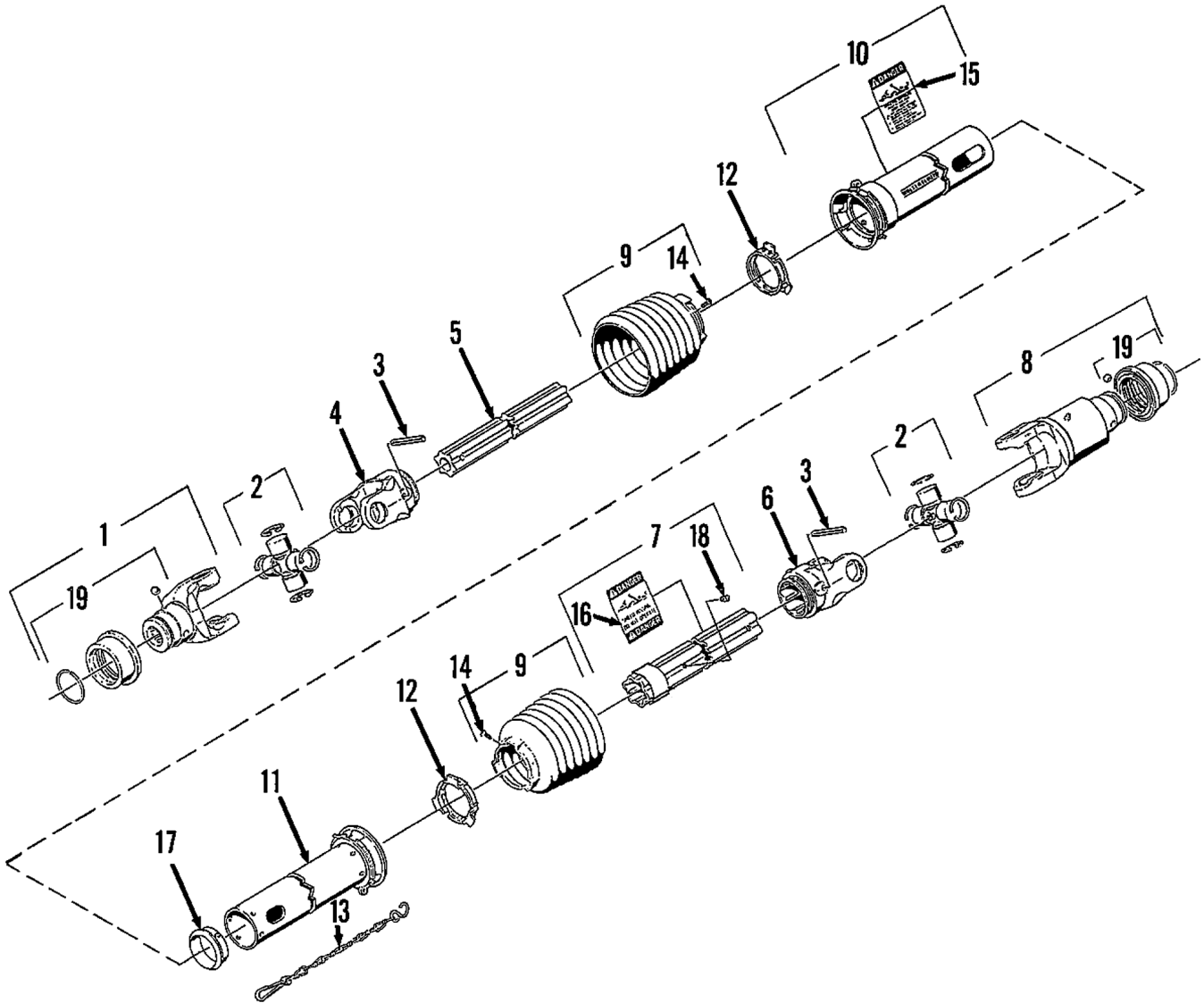
79204096 3-Point PTO Shaft Assembly

DWG. NO. 2509A

| REF. NO. | PART NUMBER | DESCRIPTION | QTY. | REF. NO. | PART NUMBER | DESCRIPTION | QTY. |
|----------|-------------|--|------|----------|-------------|-----------------------------|------|
| 1 | 520-03158 | Yoke 1 3/8 - 21 Spline | 1 | 12 | 520-03136 | Support Bearing | 1 |
| 2 | 79203639 | Cross & Bearing Kit | 2 | 13 | 520-03140 | Grease Zerk | 1 |
| 3 | 520-03124 | Spring Pin 10 x 90 | 2 | 14 | 79204099 | Inner Profile | 1 |
| 4 | 520-03159 | Inboard Yoke | 1 | 15 | 79204115 | Inboard Yoke Outer | 1 |
| 5 | 520-03118 | Overrunning Clutch (See Section 1 Page 10) | 1 | 16 | 520-03163 | Outer Shield Tube | 1 |
| 6 | 52003235 | Shield Cone 7 Rib | 2 | 17 | 520-03164 | Inner Shield Tube | 1 |
| 7 | 520-03129 | Bearing Ring | 2 | 18 | 520-03141 | Collar Kit | 0 |
| 8 | 520-03137 | Chain | 1 | 19 | 520-03142 | Collar Kit | 0 |
| 9 | 520-03135 | Screw | 2 | 20 | 79203403 | Reinforcing Collar | 2 |
| 10 | 520-03138 | Outer Decal | 1 | | 79204096 | Complete PTO Shaft Assembly | |
| 11 | 520-03139 | Inner Decal | 1 | | | | |

HINIKER 1700 SHREDDER

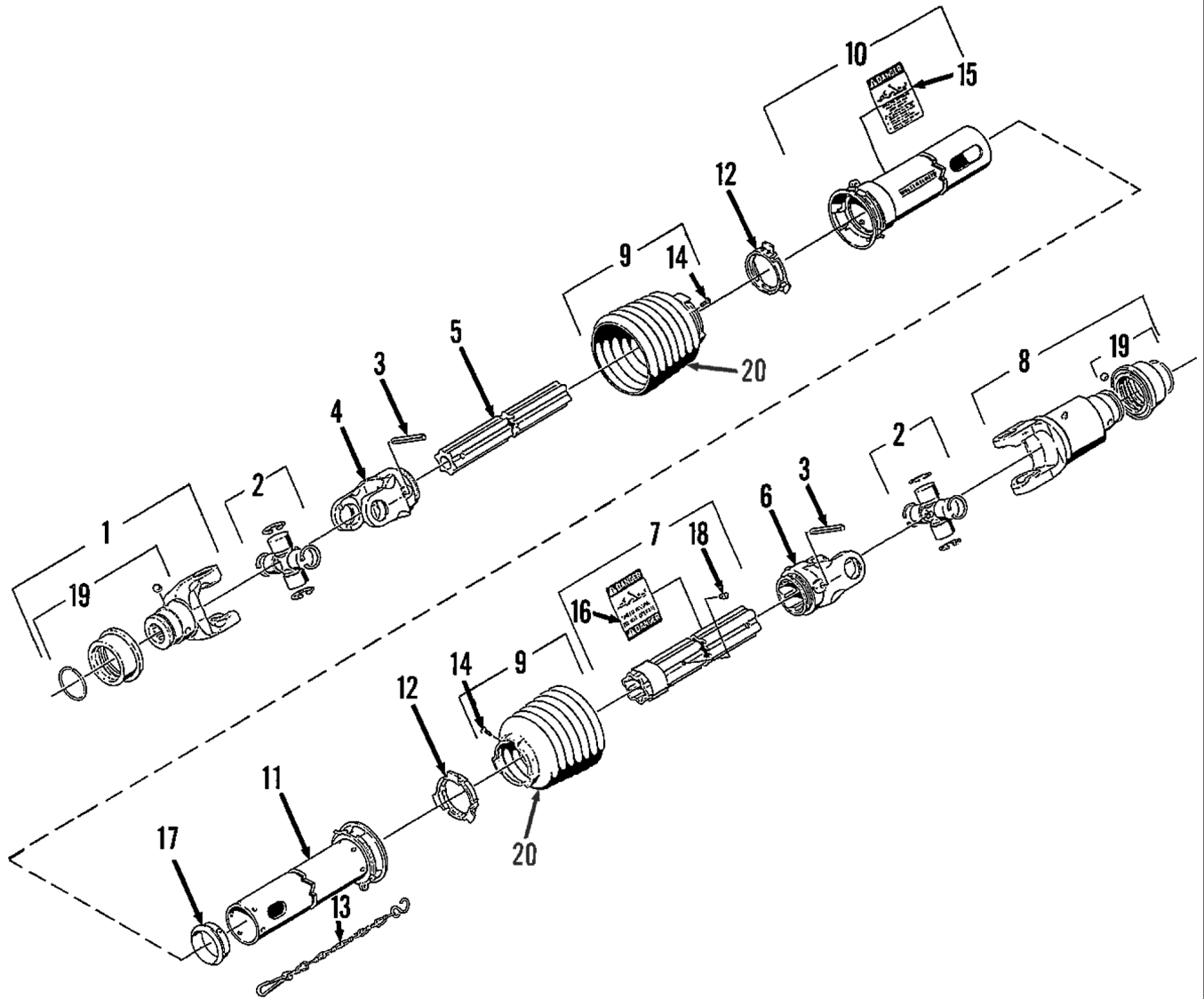
3 POINT HITCH PTO 1 3/4-20
(YELLOW SHIELDS)



DWG. NO. 2515

| REF. NO. | PART NUMBER | DESCRIPTION | QTY. | REF. NO. | PART NUMBER | DESCRIPTION | QTY. |
|----------|-------------|----------------------|------|----------|-------------|-------------------|------|
| 1 | 520-03170 | Yoke 1 3/4-20 Spline | 1 | 11 | 520-03174 | Inner Shield Tube | 1 |
| 2 | 520-03128 | Cross & Bearing Kit | 2 | 12 | 520-03129 | Bearing Ring | 2 |
| 3 | 520-03124 | Spring Pin | 2 | 13 | 520-03137 | Chain | 1 |
| 4 | 520-03159 | Inboard Yoke | 1 | 14 | 520-03135 | Screw | 2 |
| 5 | 520-03165 | Inner Profile | 1 | 15 | 520-03138 | Outer Decal | 1 |
| 6 | 520-03127 | Inboard Yoke | 1 | 16 | 520-03139 | Inner Decal | 1 |
| 7 | 520-03172 | Outer Profile | 1 | 17 | 520-03136 | Support Bearing | 1 |
| 8 | 520-03118 | Overrunning Clutch | 1 | 18 | 520-03140 | Grease Zerk | 1 |
| 9 | 520-03134 | Shield Cone | 2 | 19 | 520-03142 | Collar Kit | 2 |
| 10 | 520-03173 | Outer Shield Tube | 1 | | | | |

3-POINT HITCH PTO 1 3/4-20
(BLACK SHIELDS)



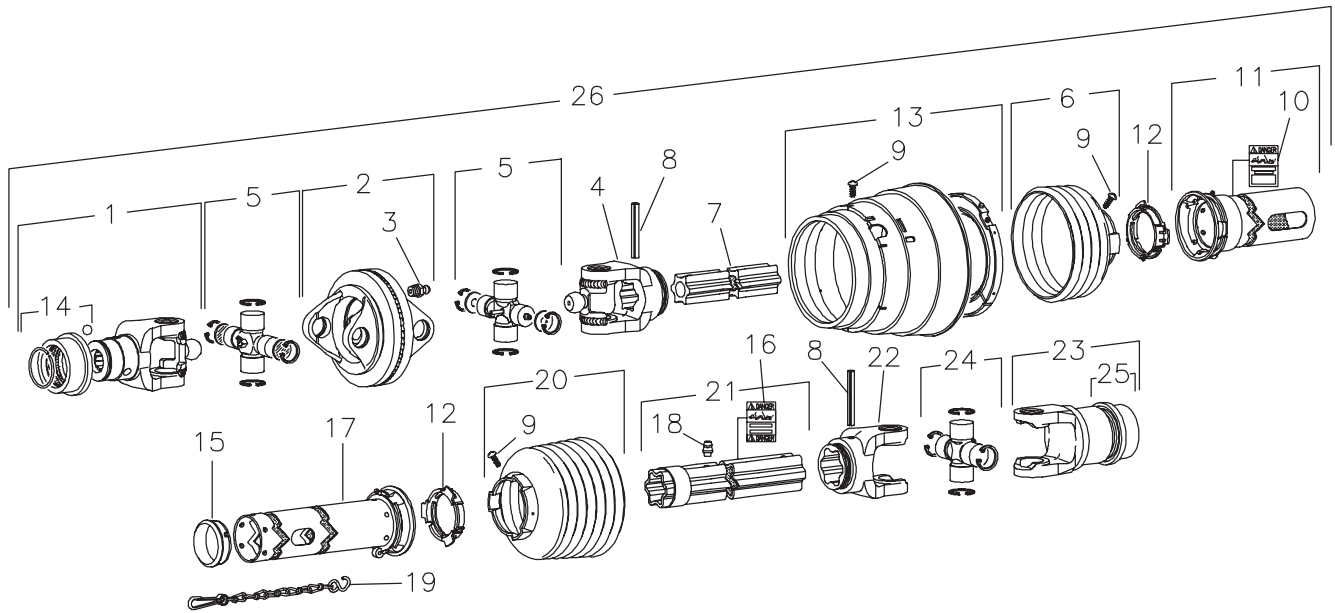
79204095 3-Point PTO Shaft Assembly

DWG. NO. 2515A

| REF. NO. | PART NUMBER | DESCRIPTION | QTY. | REF. NO. | PART NUMBER | DESCRIPTION | QTY. |
|----------|-------------|--|------|----------|-------------|-------------------------------|------|
| 1 | 520-03170 | Yoke 1 3/4-20 Spline | 1 | 12 | 520-03129 | Bearing Ring | 2 |
| 2 | 79203639 | Cross & Bearing Kit | 2 | 13 | 520-03137 | Chain | 1 |
| 3 | 520-03124 | Spring Pin | 2 | 14 | 520-03135 | Screw | 2 |
| 4 | 520-03159 | Inboard Yoke | 1 | 15 | 520-03138 | Danger Decal | 1 |
| 5 | 79204099 | Inner Profile | 1 | 16 | 520-03139 | Danger Decal | 1 |
| 6 | 520-03127 | Inboard Yoke | 1 | 17 | 520-03136 | Support Bearing | 1 |
| 7 | 79204100 | Outer Profile | 1 | 18 | 520-03140 | Grease Zerk | 1 |
| 8 | 520-03118 | Overrunning Clutch (See Section 1 Page 10) | 1 | 19 | 520-03142 | Collar Kit | 2 |
| 9 | 520-03235 | Shield Cone | 2 | 20 | 79203403 | Reinforcing Collar | 5 |
| 10 | 520-03173 | Outer Shield Tube | 1 | | 79204095 | Complete 3 Point PTO Assembly | |
| 11 | 520-03174 | Inner Shield Tube | 1 | | | | |

HINIKER 1700 SHREDDER

1 3/8-21 1000 RPM CV PTO (YELLOW SHIELDS)



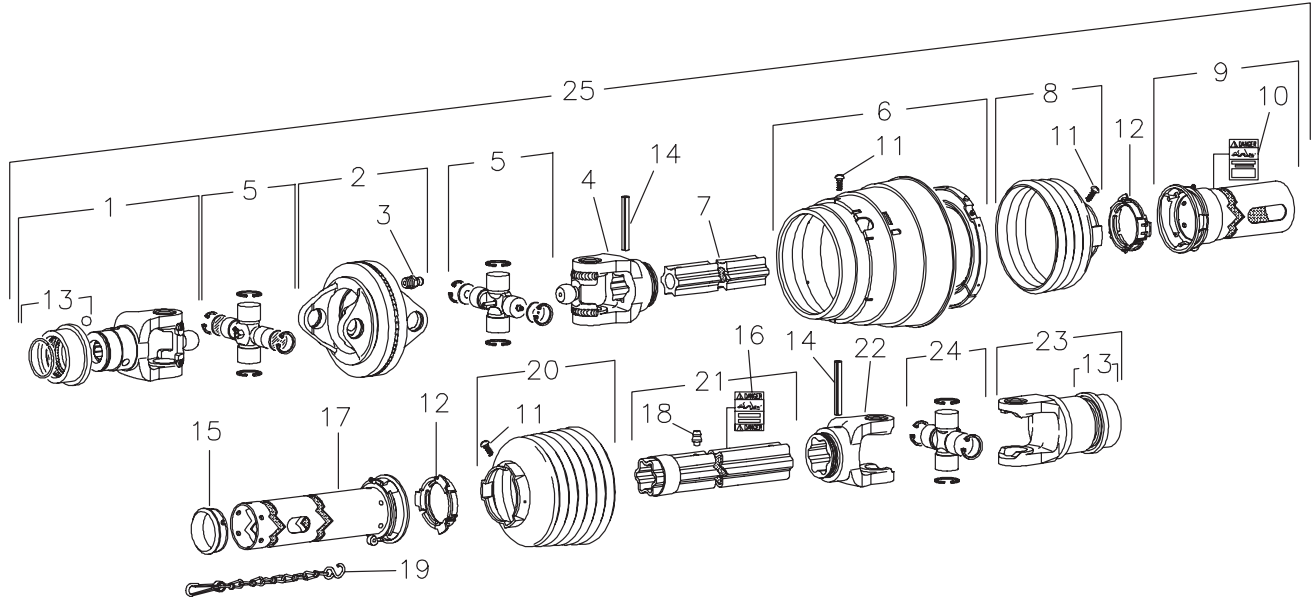
DWG. NO. 2518

| REF. NO. | PART NUMBER | DESCRIPTION | QTY. | REF. NO. | PART NUMBER | DESCRIPTION | QTY. |
|----------|-------------|----------------------------|------|----------|-------------|---|------|
| 1 | 520-03119 | Yoke 1 3/8-21 Spline | 1 | 14 | 520-03141 | Collar Kit | 1 |
| 2 | 520-03120 | Double Yoke | 1 | 15 | 520-03136 | Support Bearing | 1 |
| 3 | 520-03121 | Grease Zerk | 1 | 16 | 520-03139 | Inner Decal | 1 |
| 4 | 520-03122 | Inboard Yoke | 1 | 17 | 520-03131 | Inner Shield | 1 |
| 5 | 520-03123 | Cross & Bearing Kit | 2 | 18 | 520-03140 | Grease Zerk | 1 |
| 6 | 520-03133 | Shield Cone 3 Rib | 1 | 19 | 520-03137 | Safety Chain | 1 |
| 7 | 520-03125 | Inner Profile | 1 | 20 | 520-03134 | Shield Cone 7 Rib | 1 |
| 8 | 520-03124 | Spring Pin | 2 | 21 | 520-03126 | Profile & Sleeve Weldment | 1 |
| 9 | 520-03135 | Screw | 8 | 22 | 520-03127 | Inboard Yoke | 1 |
| 10 | 520-03138 | Outer Decal | 1 | 23 | 520-03118 | Overrunning Clutch | 1 |
| 11 | 520-03130 | Outer Shield | 1 | 24 | 520-03128 | Cross & Bearing Kit | 1 |
| 12 | 520-03129 | Bearing Ring | 2 | 25 | 520-03142 | Collar Kit | 1 |
| 13 | 520-03132 | CV Cone & Bearing Assembly | 1 | 26 | 520-03115 | Complete Front Half, 1 3/8-21 CV Assembly | |

HINIKER 1700 SHREDDER

SECTION
1

1 3/4-20 1000 RPM CV PTO (YELLOW SHIELDS)

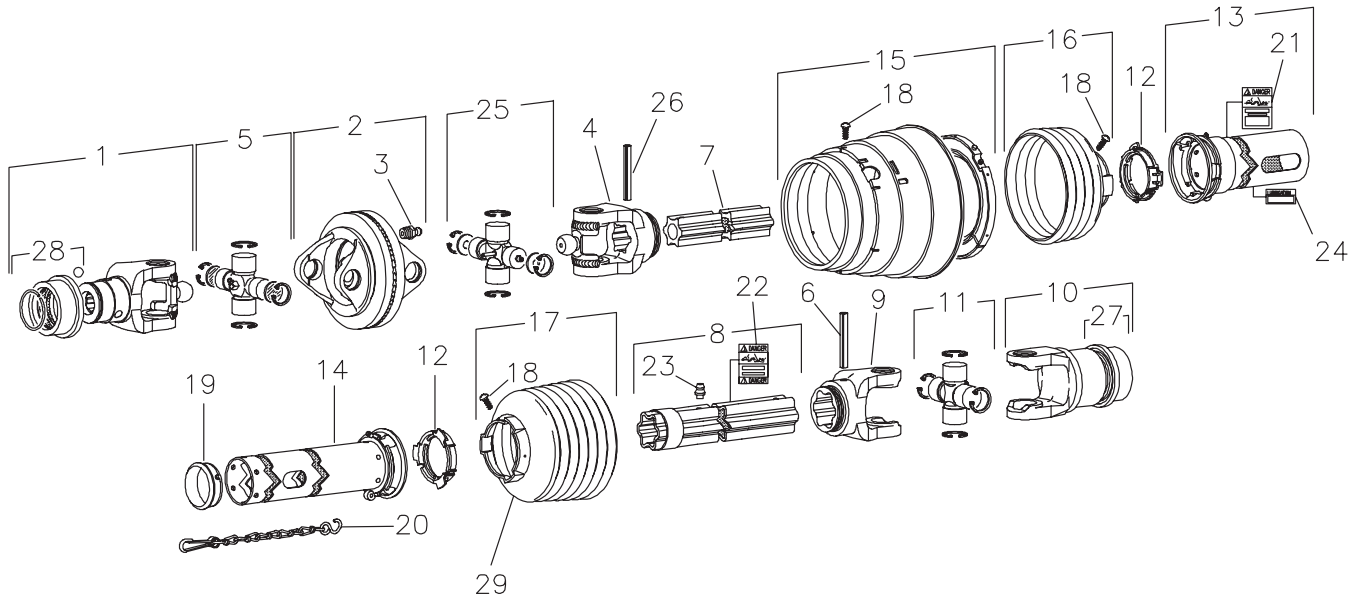


DWG. NO. 2671

| REF. NO. | PART NUMBER | DESCRIPTION | QTY. | REF. NO. | PART NUMBER | DESCRIPTION | QTY. |
|----------|-------------|-----------------------|------|----------|-------------|--|------|
| 1 | 520-03143 | Yoke 1 3/4-20 Spline | 1 | 14 | 520-03124 | Spring Pin | 2 |
| 2 | 520-03120 | Double Yoke | 1 | 15 | 520-03136 | Support Bearing | 1 |
| 3 | 520-03121 | Grease Zerk | 1 | 16 | 520-03139 | Inner Decal | 1 |
| 4 | 520-03122 | Inboard Yoke | 1 | 17 | 520-03177 | Inner Shield | 1 |
| 5 | 520-03123 | Cross & Bearing Kit | 2 | 18 | 520-03140 | Grease Zerk | 1 |
| 6 | 520-03132 | Cv Cone & Bearing Kit | 1 | 19 | 520-03137 | Safety Chain | 1 |
| 7 | 520-03144 | Inner Profile | 1 | 20 | 520-03134 | Shield Cone 7 Rib | 1 |
| 8 | 520-03133 | Shield Cone, 3 Rib | 1 | 21 | 520-03176 | Profile & Sleeve Weldment | 1 |
| 9 | 520-03145 | Outer Shield | 1 | 22 | 520-03127 | Inboard Yoke | 1 |
| 10 | 520-03138 | Outer Decal | 1 | 23 | 520-03118 | Overrunning Clutch | 1 |
| 11 | 520-03125 | Screw | 8 | 24 | 520-03128 | Cross & Bearing Kit | 1 |
| 12 | 520-03129 | Bearing Ring | 2 | 25 | 520-03117 | Complete Front Half 1 3/4-20 CV Assembly | |
| 13 | 520-03142 | Collar Kit | 2 | | | | |

HINIKER 1700 SHREDDER

1 3/8-21 1000 RPM CV PTO (BLACK SHIELDS)



79202278 PTO 1 3/8-21 GKN 395564

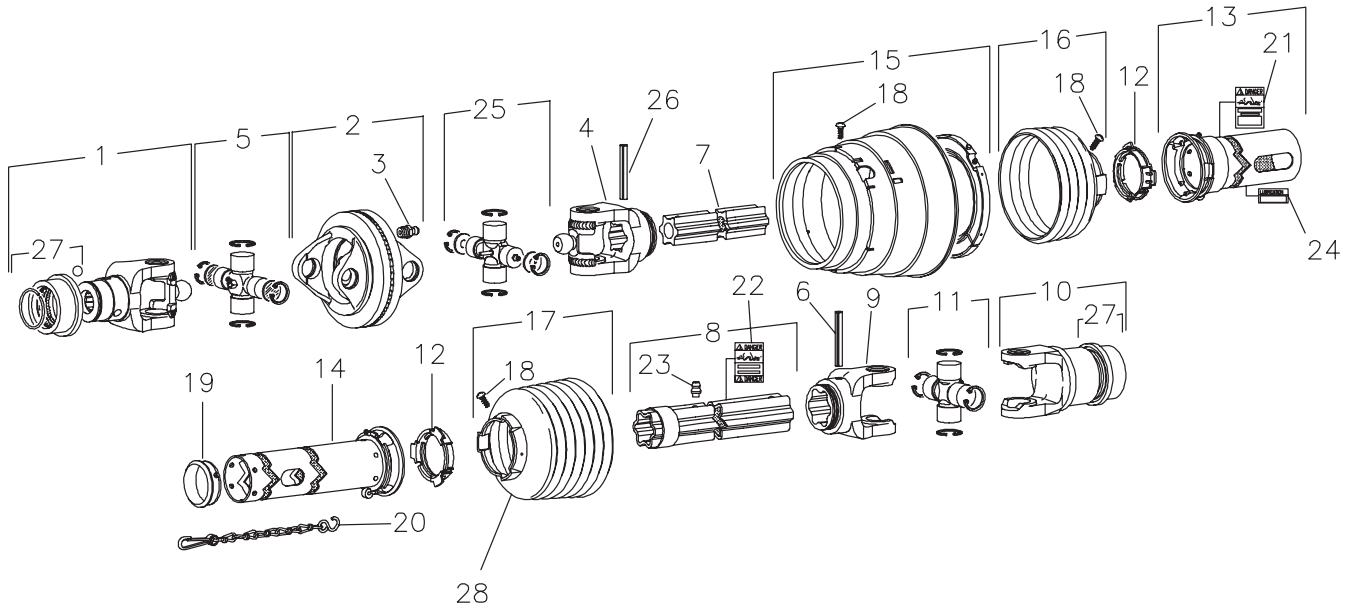
DWG. NO. 5936

| REF. NO. | PART NUMBER | DESCRIPTION | QTY. | REF. NO. | PART NUMBER | DESCRIPTION | QTY. |
|----------|-------------|--|------|----------|-------------|------------------------|------|
| 1 | 520-03119 | Yoke, 1 3/8-21 Spline | 1 | 16 | 52003234 | Shield Cone 4 Rib | 1 |
| 2 | 520-03120 | Double Yoke | 1 | 17 | 52003235 | Shield Cone 7 Rib | 1 |
| 3 | 520-03121 | Grease Zerk | 1 | 18 | 520-03135 | Screw | 10 |
| 4 | 52003230 | Inboard Yoke S4 | 1 | 19 | 520-03136 | Support Bearing | 1 |
| 5 | 520-03123 | Cross & Bearing Kit | 1 | 20 | 520-03137 | Safety Chain | 1 |
| 6 | 520-03124 | Spring Pin 10 x 90 | 1 | 21 | 520-03138 | Outer Decal | 1 |
| 7 | 520-03144 | Inner Profile | 1 | 22 | 520-03139 | Inner Decal | 1 |
| 8 | 520-03176 | Profile & Sleeve Weldment | 1 | 23 | 520-03140 | Grease Zerk | 1 |
| 9 | 520-03127 | Inboard Yoke S5 | 1 | 24 | 52003236 | Lubrication Decal | 1 |
| 10 | 520-03118 | Overrunning Clutch | 1 | 25 | 52003237 | Cross & Bearing Kit | 1 |
| 11 | 52003243 | Cross & Bearing Kit | 1 | 26 | 52003242 | Spring Pin 10 x 75 | 1 |
| 12 | 520-03129 | Bearing Ring | 2 | 27 | 520-03142 | Collar Kit (In Item 7) | 1 |
| 13 | 52003246 | Out Shield Tube OVL | 1 | 28 | 520-03141 | Collar Kit (In Item 1) | 1 |
| 14 | 52003247 | In Shield Tube Round | 1 | 29 | 79203403 | Reinforcing Collar | 1 |
| 15 | 52003233 | CV Cone & Bearing Assembly | 1 | | | | |
| | 52003244 | CV Cone & Bearing Assembly (With Flex Net) | 1 | | | | |

HINIKER 1700 SHREDDER

SECTION
1

1 3/4-20 1000 RPM CV PTO (BLACK SHIELDS)



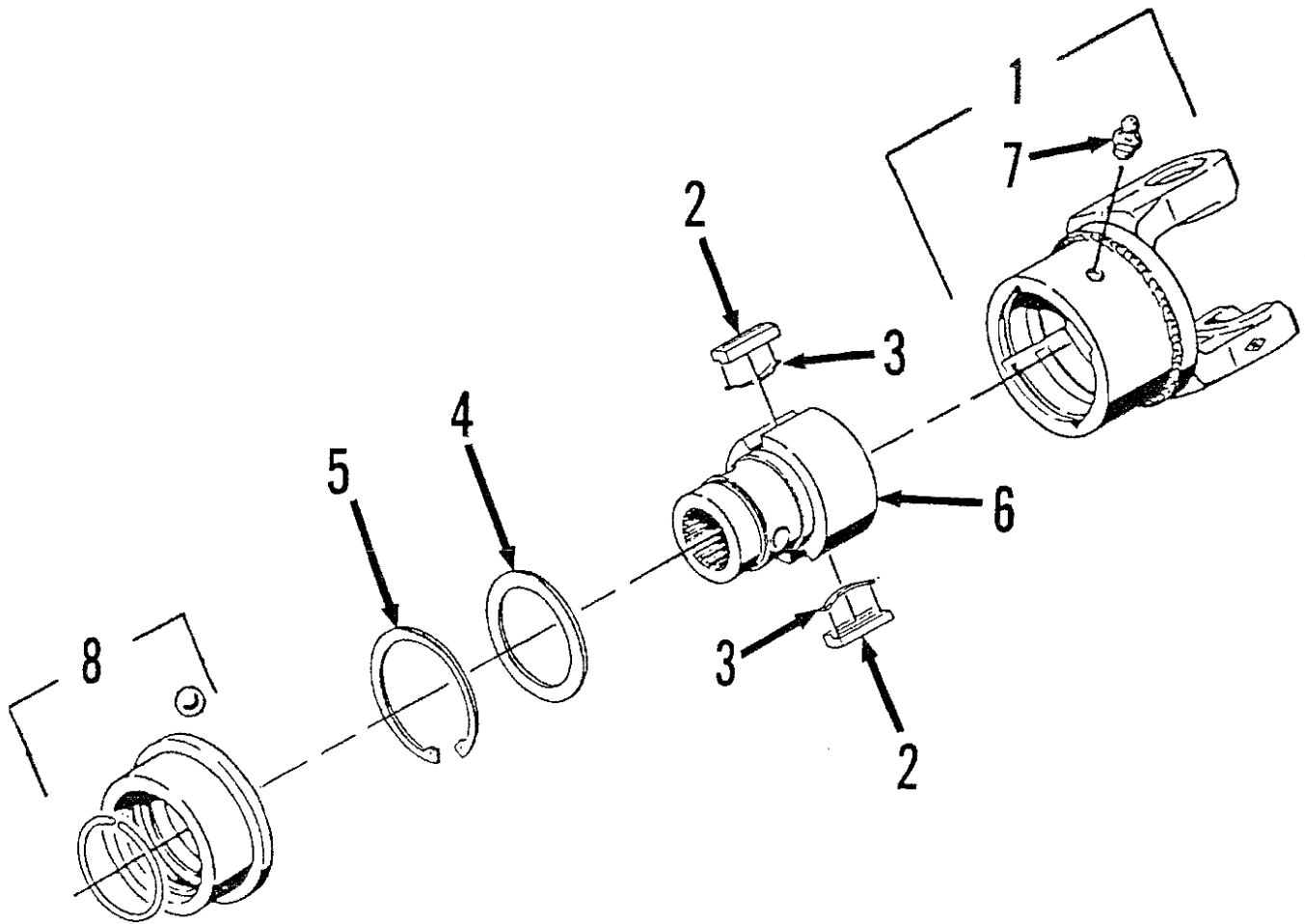
79202277 PTO 1 3/4-20 GKN 396073

DWG. NO. 5937

| REF. NO. | PART NUMBER | DESCRIPTION | QTY. | REF. NO. | PART NUMBER | DESCRIPTION | QTY. |
|----------|-------------|--|------|----------|-------------|---------------------------|------|
| 1 | 520-03143 | Yoke, 1 3/4-20 Spline | 1 | 16 | 52003234 | Shield Cone 4 Rib | 1 |
| 2 | 520-03120 | Double Yoke | 1 | | 52003245 | Flex Net & Guard Assembly | 1 |
| 3 | 520-03121 | Grease Zerk | 1 | 17 | 52003235 | Shield Cone 7 Rib | 1 |
| 4 | 52003230 | Inboard Yoke S4 | 1 | 18 | 520-03135 | Screw | 10 |
| 5 | 520-03123 | Cross & Bearing Kit | 1 | 19 | 520-03136 | Support Bearing | 1 |
| 6 | 520-03124 | Spring Pin 10 x 90 | 1 | 20 | 520-03137 | Safety Chain | 1 |
| 7 | 520-03144 | Inner Profile | 1 | 21 | 520-03138 | Outer Decal | 1 |
| 8 | 520-03176 | Profile & Sleeve Weldment | 1 | 22 | 520-03139 | Inner Decal | 1 |
| 9 | 520-03127 | Inboard Yoke S5 | 1 | 23 | 520-03140 | Grease Zerk | 1 |
| 10 | 520-03118 | Overrunning Clutch | 1 | 24 | 52003236 | Lubrication Decal | 1 |
| 11 | 52003243 | Cross & Bearing Kit | 1 | 25 | 52003237 | Cross & Bearing Kit | 1 |
| 12 | 520-03129 | Bearing Ring | 2 | 26 | 52003242 | Spring Pin 10 x 75 | 1 |
| 13 | 52003246 | Out Shield Tube Oval | 1 | 27 | 520-03142 | Collar Kit | 2 |
| 14 | 52003247 | Inn Shield Tube Round | 1 | 28 | 79203403 | Reinforcing Collar | 1 |
| 15 | 52003233 | CV Cone & Bearing Assembly | 1 | | | | |
| | 52003244 | CV Cone & Bearing Assembly (With Flex Net) | 1 | | | | |

HINIKER 1700 SHREDDER

OVERRUNNING CLUTCH 1000 RPM



520-03118 Overrunning Clutch

DWG. NO. 2512

| REF. NO. | PART NUMBER | DESCRIPTION | QTY. | REF. NO. | PART NUMBER | DESCRIPTION | QTY. |
|----------|-------------|-----------------|------|----------|-------------|------------------------|------|
| 1 | 520-03146 | Clutch Housing | 1 | 5 | 520-03150 | Retaining Ring | 1 |
| 2 | 520-03147 | Key | 2 | 6 | 520-03151 | Hub, 1 3/4 - 20 Spline | 1 |
| 3 | 520-03148 | Leaf Spring | 2 | 7 | 520-03121 | Grease Zerk | 1 |
| 4 | 520-03149 | Supporting Ring | 2 | 8 | 520-03142 | Collar Kit | 1 |

SECTION 2

GEARBOX

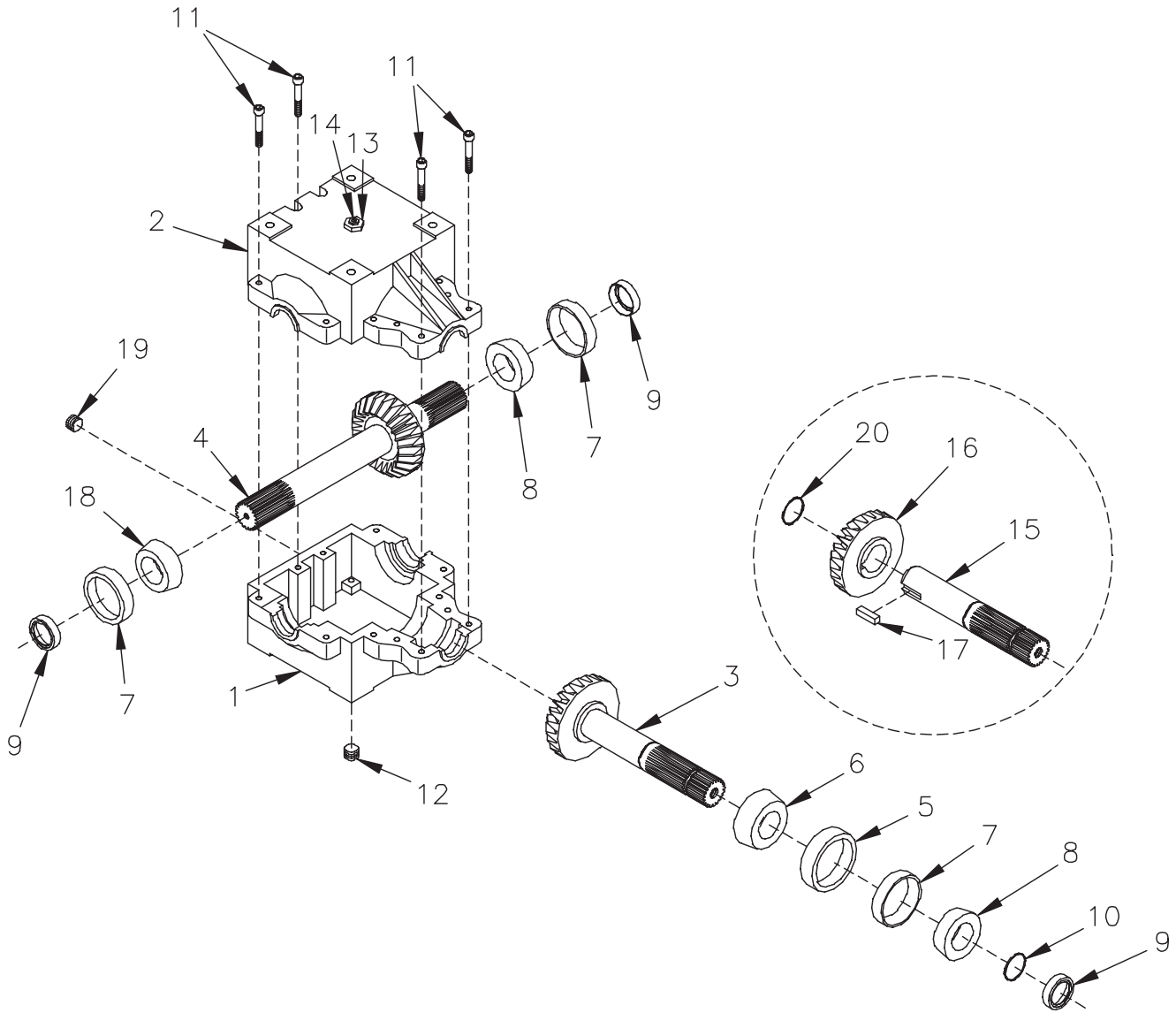
PAGE 2

GEARBOX ASSEMBLY, 1000 RPM

HINIKER 1700 SHREDDER

GEARBOX ASSEMBLY, 1000 RPM

SEC 2



51700216 1000 RPM Gearbox Assembly

DWG. NO. 2505C

| REF. NO. | PART NUMBER | DESCRIPTION | QTY. | REF. NO. | PART NUMBER | DESCRIPTION | QTY. |
|----------|-------------|---|------|----------|-------------|--------------------------------------|------|
| 1 | 400-17205 | Casting (Tapped Holes) | 1 | 11 | 950-011-032 | Socket Head Cap Screw 3/8-16 x 2 1/4 | 12 |
| 2 | 400-17206 | Casting (Thru Holes) | 1 | 12 | 203-51156 | Plug, 1/2 NPT Hex Socket Head | 1 |
| 3 | 50106488 | Pinion Shaft/Gear (Replaces 15, 16, 17, 20) S/N-103 | 1 | 13 | 203-51074 | Bushing, 1/2 NPT - 1/8 NPT | 1 |
| 4 | 50106489 | Cross Shaft/Gear | 1 | 14 | 203-50308 | Pressure Relief | 1 |
| 5 | 601-05002 | Bearing Cup (Large) #3720 | 1 | 15 | 501-06483 | Pinion Shaft | 1 |
| 6 | 601-02075 | Bearing Cone (Large) #3782 | 1 | 16 | 517-11099 | Gear 1:1 Ratio | 2 |
| 7 | 601-05001 | Bearing Cup (Small) #25520 | 3 | 17 | 702-53219 | 3/8 Square x 1.45 Long Keys | 2 |
| 8 | 601-03003 | Bearing Cone (Small) #25581 | 2 | 18 | 601-02001 | Bearing Cone 625580 | 1 |
| 9 | 650-06056 | Seal (1 3/4 Shaft) | 3 | 19 | 79201412 | Plain Plug 1/4 NPT | 1 |
| 10 | 702-05093 | Retaining Ring (1 3/4 Shaft) | 1 | 20 | 702-05093 | Retaining Ring (1 3/4 Shaft) | 1 |

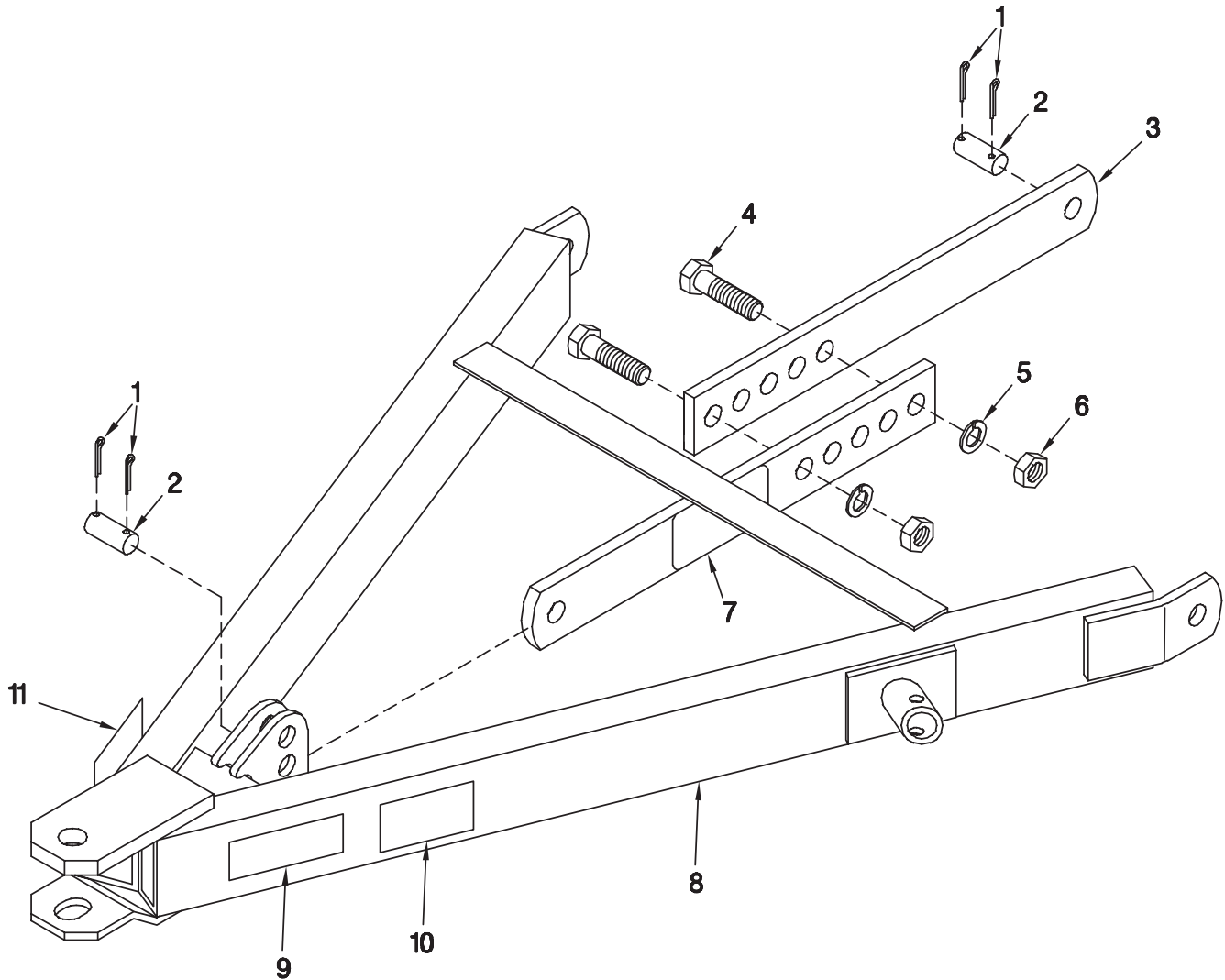
SECTION 3

HITCH ASSEMBLIES

| | |
|---------------|---------------------------------|
| PAGE 2 | TRAIL HITCH ASSEMBLY |
| PAGE 3 | 3 - POINT HITCH ASSEMBLY |

TRAIL HITCH ASSEMBLY

SEC
3

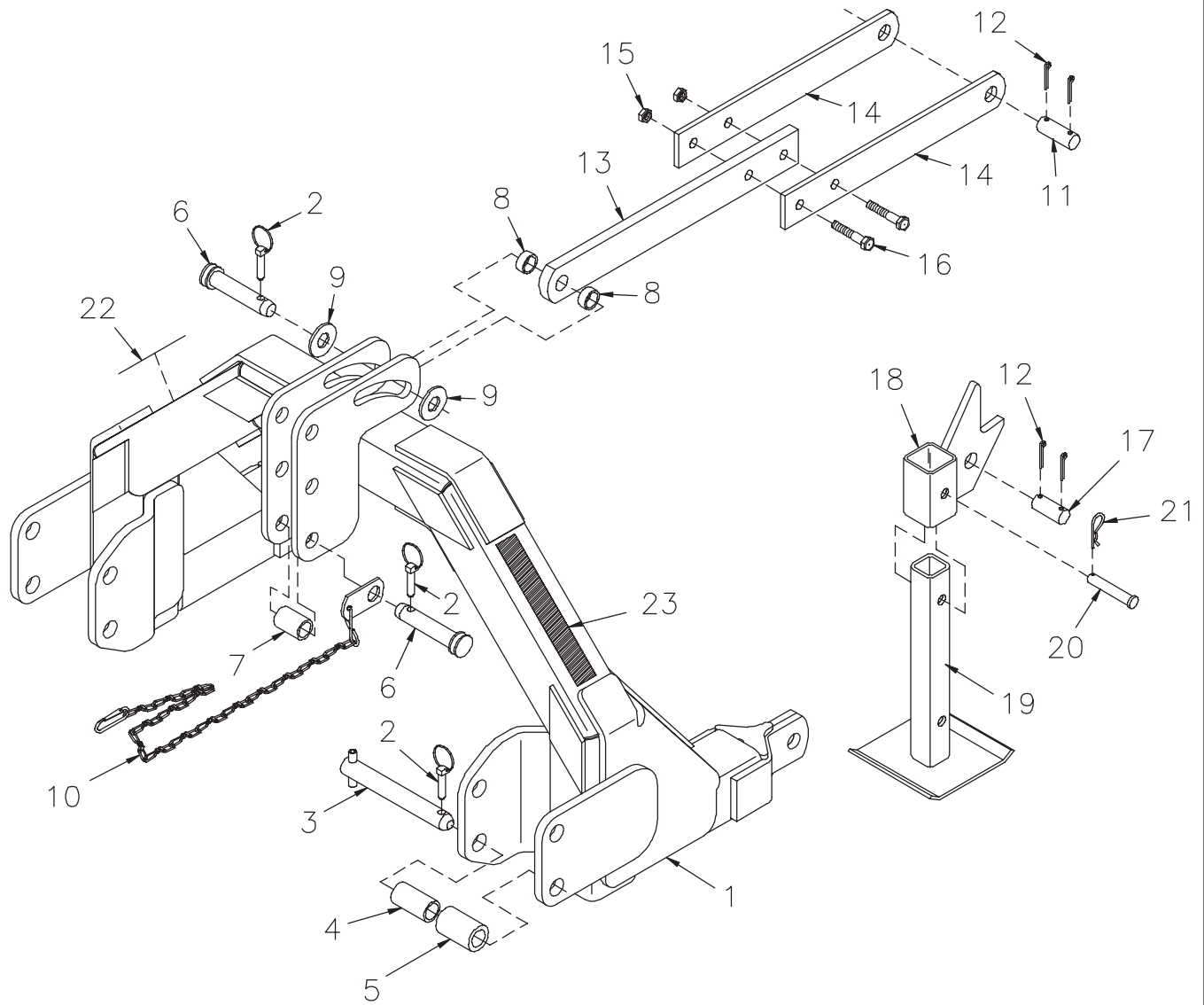


79201775 Trail Hitch Assembly

DWG. NO. 3174

| REF. NO. | PART NUMBER | DESCRIPTION | QTY. | REF. NO. | PART NUMBER | DESCRIPTION | QTY. |
|----------|-------------|----------------------------------|------|----------|-------------|-----------------------|------|
| 1 | 035-42065 | Cotter Pin 1/4 x 1 3/4 | 4 | 7 | 71505172 | Decal, "Warning" | 1 |
| 2 | 79200993 | Hitch Pin | 2 | 8 | 79201776 | Hitch Assembly | 1 |
| 3 | 79201772 | Bar Level | 2 | 9 | 850-001-285 | Tape Yellow Reflector | 1 |
| 4 | 031-06459 | Hex Head Cap Screw 1-8 x 3 Gr. 5 | 2 | 10 | 85501787 | Decal, 'Caution" | 1 |
| 5 | 952-001-009 | Lock Washer 1 Inch | 2 | 11 | 850-001-305 | Tape Red Reflector | 1 |
| 6 | 951-001-011 | Hex Nut 1-8 | 2 | | | | |

3-POINT HITCH ASSEMBLY



79203325 3-Point Hitch Assembly

DWG. NO. 2494A

| REF. NO. | PART NUMBER | DESCRIPTION | QTY. | REF. NO. | PART NUMBER | DESCRIPTION | QTY. |
|----------|-------------|------------------------|------|----------|-------------|---|------|
| 1 | 79203326 | 3-Point Hitch Weldment | 1 | 13 | 79200880 | Top Link | 1 |
| 2 | 25010319 | Klik Pin | 4 | 14 | 79200881 | Link | 2 |
| 3 | 79203173 | Lower Pin Assembly | 2 | 15 | 034-05172 | Stover Lock Nut 5/8-11 | 2 |
| 4 | 117-010-008 | Small Spacer | 2 | 16 | 950-001-147 | Hex Head Cap Screw 5/8-11 x 2 1/2 Gr. 5 | 2 |
| 5 | 117-010-009 | Larger Spacer | 2 | 17 | 79200993 | Lower Trail Hitch Pin | 1 |
| 6 | 875-001-123 | Top Link Pin | 2 | 18 | 79201083 | Stand Mount Weldment | 1 |
| 7 | 890-001-009 | Spacer | 1 | 19 | 79201081 | Stand Tube Weldment | 1 |
| 8 | 79200965 | Spacer Collar | 2 | 20 | 953-002-021 | Clevis Pin 5/8 x 3 1/2 | 1 |
| 9 | 952-002-010 | Flat Washer 1 Inch | 2 | 21 | 953-005-001 | Cotter Pin .120 x 2 3/8 | 1 |
| 10 | 79200990 | PTO Chain Assembly | 1 | 22 | 850-001-305 | Tape Red Reflector (Side Opposite) | 1 |
| 11 | 79200964 | Center Link Pin | 1 | 23 | 850-001-285 | Tape Yellow Reflector | 1 |
| 12 | 035-42064 | Cotter Pin 1/4 x 1 1/2 | 4 | | 79203325 | Complete 3-Point Hitch Assembly | |

SECTION 4

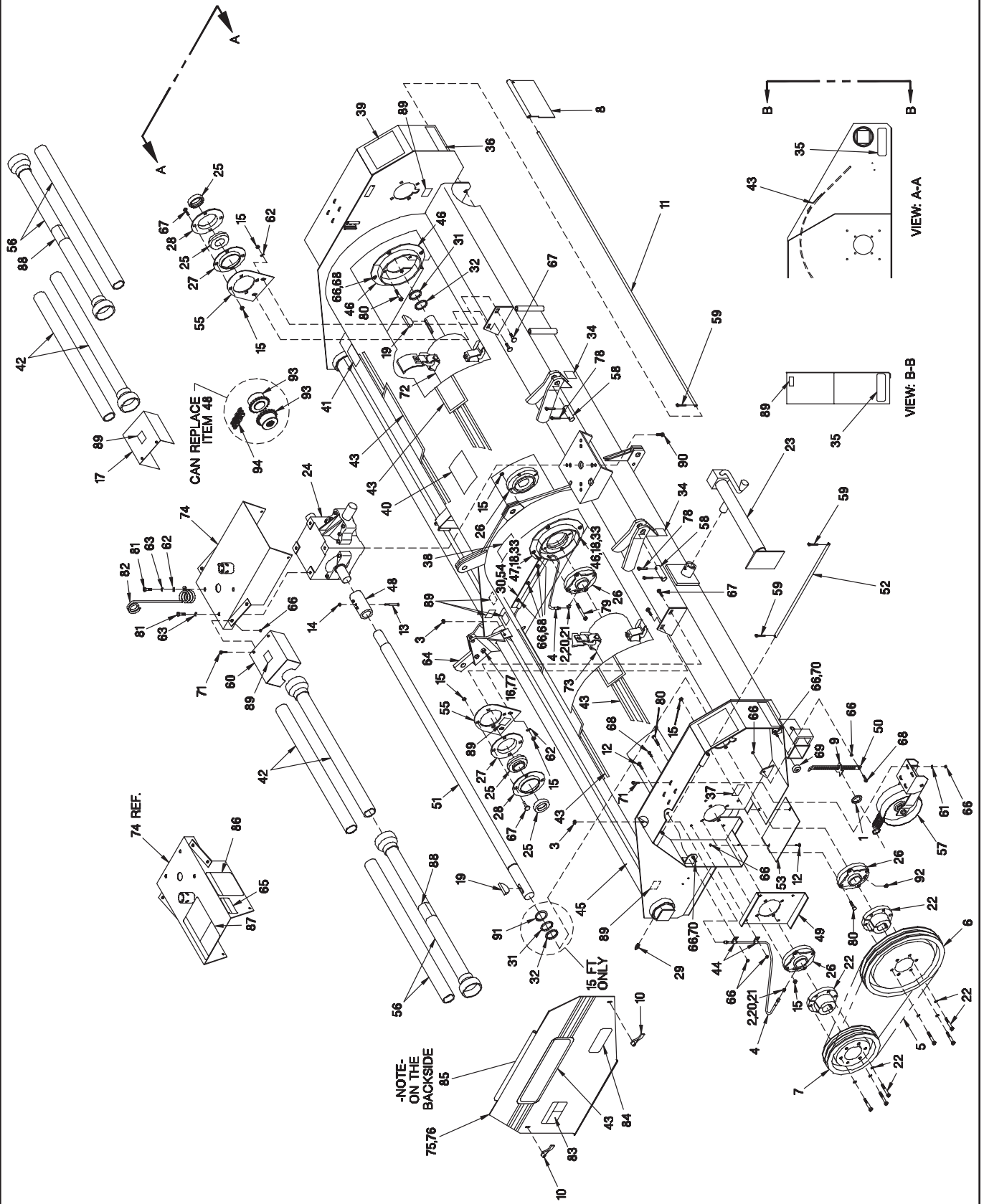
BODY ASSEMBLIES

| | |
|---------------|--|
| PAGE 2 | 12 FT. & 15 FT. BODY ASSEMBLY |
| PAGE 4 | 18 & 20 FT. BODY ASSEMBLY |
| PAGE 6 | ROTOR BEARING 2" SHAFT |

HINIKER 1700 SHREDDER

12 FT. & 15 FT. BODY ASSEMBLY

4 C M S



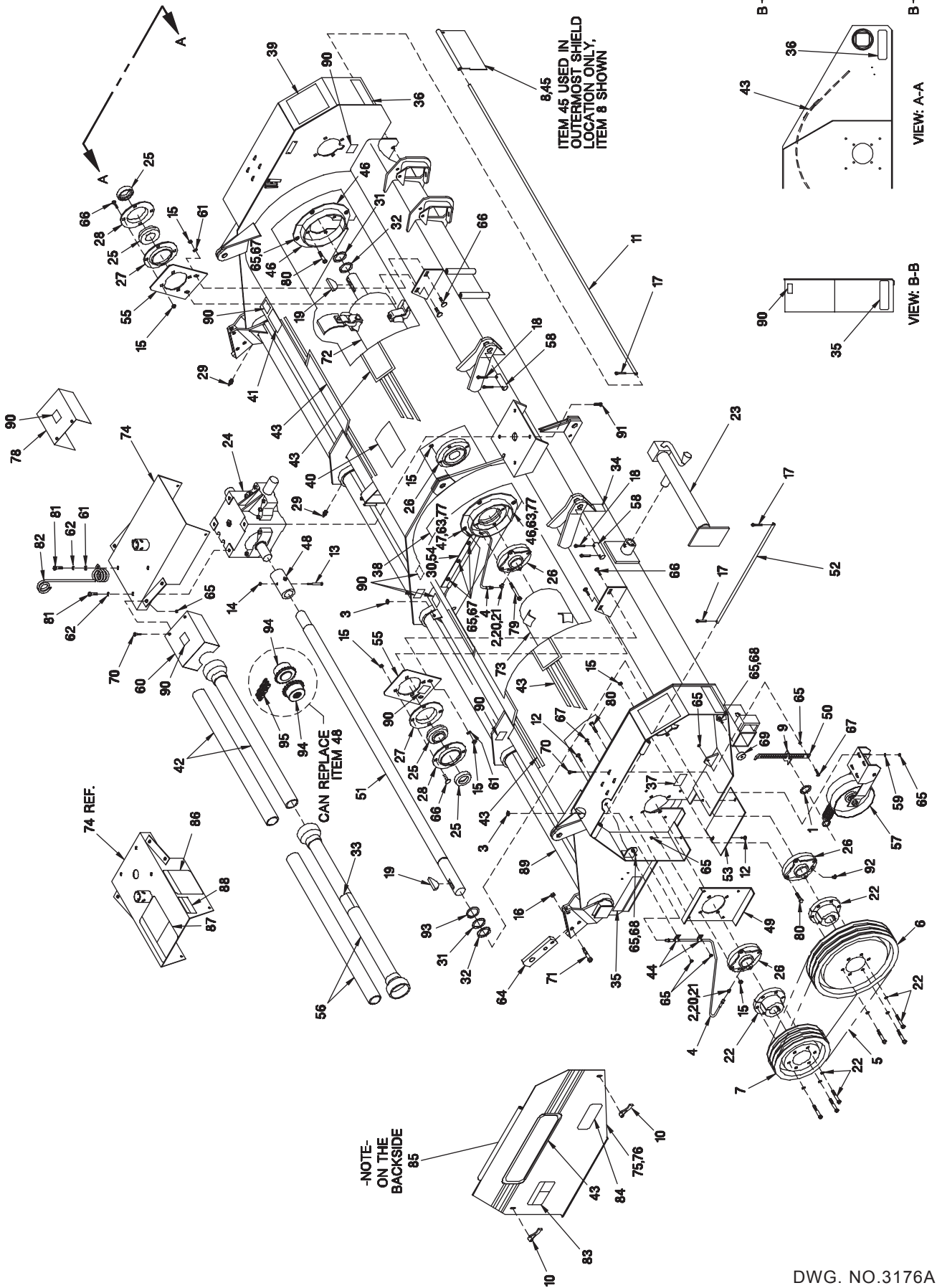
DWG. NO. 3175A

HINIKER 1700 SHREDDER

| REF. NO. | PART NUMBER | DESCRIPTION | QTY. | REF. NO. | PART NUMBER | DESCRIPTION | QTY. |
|----------|-------------|--|------|----------|-------------|---|------|
| 1 | 000-20179 | 1 3/8 Machinery Bushing | 2 | 52 | 79200920 | Shield Rod | 2 |
| 2 | 000-20192 | Adapter Fitting 1/4-28 To 1/8 NPT | A/R | 53 | 79200923 | Bottom Cover (7" Wide Drive Shield) | 2 |
| 3 | 000-24063 | Lock Nut | 4 | | 79203377 | Bottom Cover (8" Wide Drive Shield) | 2 |
| 4 | 79202316 | Grease Hose | 4 | 54 | 79201398 | LH Hose Shield | 1 |
| 5 | 516-15001 | "HC" V-Belt Set Of 2 | 2 | 55 | 79201758 | Bearing Support | 2 |
| 6 | 515-18008 | Sheave, 2 Groove, Type "6" | 2 | 56 | 79201810 | Outside Shield (Used On 12 Ft. Shredders) | 2 |
| 7 | 51599032 | Sheave, 2 Groove, Type "1" | 2 | | 79201793 | Inside Shield (15 Ft Shredders) (W/Reducer Ends) | 2 |
| 8 | 000-64011 | Shield Plate | A/R | | 79203718 | Inside Shield (15 Ft Shredders) (WO/Reducer Ends) | 2 |
| 9 | 000-65186 | Spring Anchor | 2 | 57 | 79200956 | Idler Assembly | 2 |
| 10 | 000-65223 | Threaded Handle | 4 | 58 | 79200967 | Lower Hitch Pin | 2 |
| 11 | 000-65411 | Flipper Shield Rod (Used On 12 Ft. Shredders Only) | 2 | 59 | 953-001-002 | 1/8 x 1 Square Cut Cotter Pin | 6 |
| | 79200976 | Flipper Shield Rod (Used On 15 Ft. Shredders Only) | 2 | 60 | 79201779 | RH Line Shield | 1 |
| 12 | 950-003-054 | Carriage Bolt 3/8-16 x 3/4 SS Gr. 5 | 6 | 61 | 952-003-006 | Flat Washer 3/8 SAE | 8 |
| 13 | 950-001-013 | Hex Head Cap Screw 3/8-16 x 3 Gr. 8 | 2 | 62 | 952-004-067 | Flat Washer 1/2 Hardened | 5 |
| 14 | 034-05168 | Uni-Torque Lock Nut 3/8-16 | 2 | 63 | 952-001-004 | Lock Washer 1/2 Inch | A/R |
| 15 | 034-05170 | Uni-Torque Lock Nut 1/2-13 | 32 | 64 | 79201780 | Cylinder Lug | 1 |
| 16 | 034-05172 | Uni-Torque Lock Nut 5/8-11 | 3 | 65 | 71504129 | Caution Decal | 1 |
| 17 | 79201778 | LH Line Shield | 1 | 66 | 951-005-003 | Mac Lock Nut 3/8-16 | 48 |
| 18 | 79202088 | Shield Spacer 1/16" Thick | A/R | 67 | 950-003-028 | Carriage Bolt 1/2-13 x 1 1/4 | 20 |
| 19 | 035-60063 | Woodruff Key 1/2 x 2 3/4 | 4 | 68 | 950-002-014 | Hex Head Flanged Whiz Lock Bolt 3/8-16 x 1 1/4 | 17 |
| 20 | 203-51251 | 45° Elbow Lube Line 1/4-28 To 1/8 NPT | A/R | 69 | 79201120 | Shield Bumper | 4 |
| 21 | 203-51254 | 45° Elbow 1/8 NPT To 1/8 NPT | A/R | 70 | 950-002-010 | Hex Head Flanged Whiz Lock Bolt 3/8-16 x 1 1/2 | 4 |
| 22 | 400-27038 | Q.D. Hub, Type "SF", 2 Bore | 4 | 71 | 950-002-009 | Hex Head Flanged Whiz Lock Bolt 3/8-16 x 1 | 12 |
| 23 | 400-34074 | Tubular Mount Jack | 1 | 72 | 79201808 | LH 12' Cylinder Assembly Cup Knife | 1 |
| 24 | 51700216 | Gear Box Assembly, 1000 RPM | 1 | | 79201884 | LH 12' Cylinder Assembly Side Slice | 1 |
| 25 | 79203223 | 2" Spherical Bearing | A/R | | 79203198 | LH 15' Cylinder Assembly Cup Knife | 1 |
| 26 | | Flange Bearing, 2" Shaft (See Page 6, Sec. 4) | A/R | | 79203206 | LH 15' Cylinder Assembly Side Slice | 1 |
| 27 | 60400524 | Relube Flange WO/Fitting | A/R | | 79203208 | LH 15' Cylinder Assembly Cup Knife & Side Slice | 1 |
| 28 | 60400525 | Relube Flange W/Fitting | A/R | 73 | 79201809 | RH 12' Cylinder Assembly Cup Knife | 1 |
| 29 | 203-50003 | Grease Zerk 1/4-28 | 3 | | 79201883 | RH 12' Cylinder Assembly Side Slice | 1 |
| 30 | 79201397 | RH Hose Shield (Shown) | 1 | | 79203204 | RH 15' Cylinder Assembly Cup Knife | 1 |
| 31 | 710-05332 | Washer | A/R | | 79203205 | RH 15' Cylinder Assembly Side Slice | 1 |
| 32 | 710-05333 | Washer | A/R | | 79203207 | RH 15' Cylinder Assembly Cup Knife & Side Slice | 1 |
| 33 | 79202087 | Shield Spacer 1/8" Thick | A/R | 74 | 79201037 | Shield Assembly | 1 |
| 34 | 715-03174 | Lift Here Decal | 2 | 75 | 79201861 | RH Cover Assembly | 1 |
| 35 | 850-001-305 | Red Reflective Strip | 3 | 76 | 79201860 | LH Cover Assembly (Not Shown) | 1 |
| 36 | 850-001-285 | Amber Reflective Strip | 2 | 77 | 950-001-024 | Hex Head Cap Screw 5/8-11 x 2 1/2 Gr. 8 | 3 |
| 37 | 79203023 | Decal Spring Instruction | 2 | 78 | 953-001-010 | Square Cut Cotter Pin 1/4 x 1 1/2 | 4 |
| 38 | 71504126 | Important Decal | 1 | 79 | 950-001-301 | Hex Head Cap Screw 1/2-13 x 4 1/4 Gr. 5 | 4 |
| 39 | 71505171 | Warning Decal | 2 | 80 | 950-001-112 | Hex Head Cap Screw 1/2-13 x 2 Gr. 5 | A/R |
| 40 | 71504131 | Danger Decal | 1 | 81 | 950-001-111 | Hex Head Cap Screw 1/2-13 x 1 1/4 Gr. 5 | A/R |
| 41 | 71504136 | Important Decal | 2 | 82 | 000-69096 | Hose Carrier (Used On Trail Shredders) | 1 |
| 42 | 79201811 | Inside Shield (Used On 12 Ft Shredders) | 2 | 83 | 71505169 | Warning Decal | 2 |
| | 79201794 | Inside Shield (15 Ft Shredders) (W/Reducer Ends) | 2 | 84 | 71505167 | Decal 1700 | 2 |
| | 79204112 | Inside Shield (15 Ft Shredders) (WO/Reducer Ends) | 2 | 85 | 71505170 | Warning Decal | 2 |
| 43 | 71505168 | "Hiniker" Decal | 6 | 86 | 71504133 | Important Decal | 1 |
| 44 | 720-02399 | 3/8 Cable Clamp | 4 | 87 | 71504132 | Caution Decal | 1 |
| 45 | 79201213 | Rockshaft Repair Kit 15 Ft. | 1 | 88 | 520-03138 | Outer Decal | 2 |
| 46 | 79200825 | Anti-Wrap Ring | 6 | 89 | 79203259 | Grease Decal | A/R |
| 47 | 79203157 | Anti-Wrap Shield Weldment | 2 | 90 | 950-002-013 | Hex Head Flanged Whiz Lock Bolt 1/2-13 x 1 1/2 | 4 |
| 48 | 79200836 | Splined Coupler W/Fittings | 2 | 91 | 79203951 | External Snap Ring 2" Heavy Duty | 2 |
| 49 | 79200860 | Bearing Support | 2 | 92 | 955-001-010 | Grease Fitting 1/8-27 x 90° | 2 |
| 50 | 79200866 | Take Up Bar | 2 | 93 | 79203969 | Chain Coupling Weldment (Can Replace Item 48) | 4 |
| 51 | 79200912 | 12' Solid Line Shaft (Used On 12 Ft. Shredders) | 2 | 94 | 79203966 | #60 Double Chain | 2 |
| | 79200911 | 15' Solid Line Shaft (Used On 15 Ft. Shredders) | 2 | | | | |

HINIKER 1700 SHREDDER

18 & 20 FT BODY ASSEMBLY



4 CMS

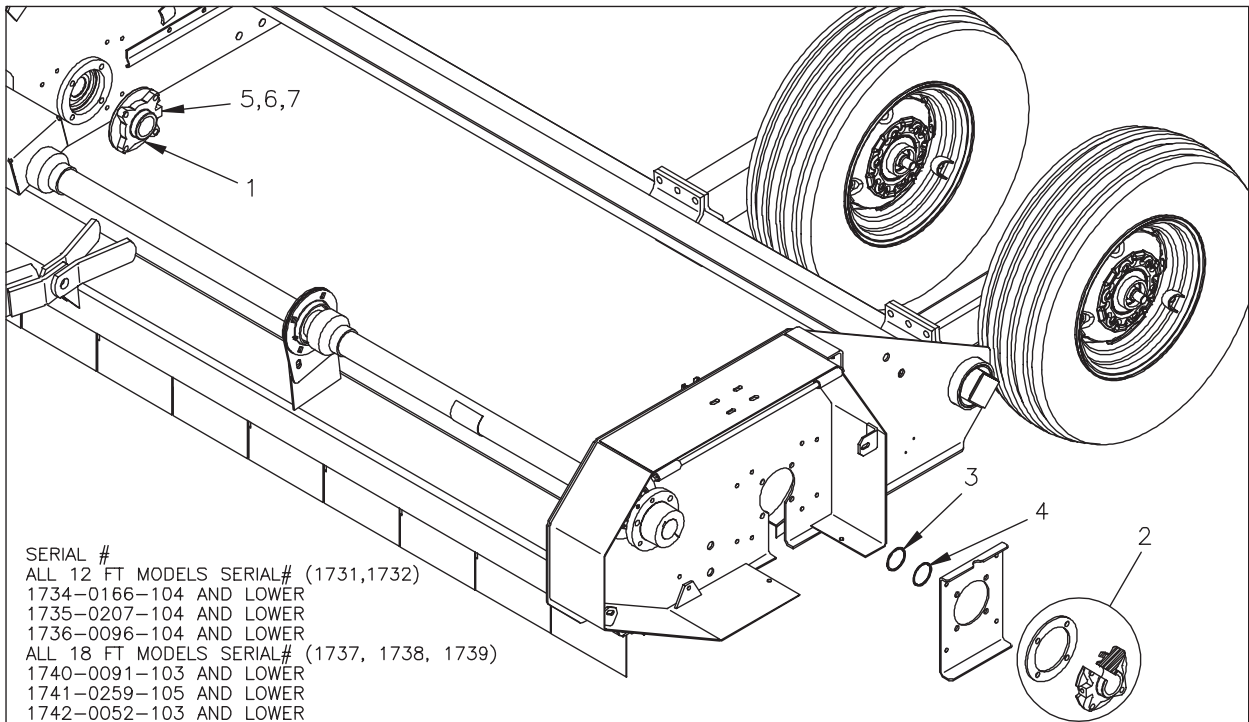
DWG. NO.3176A

HINIKER 1700 SHREDDER

| REF. NO. | PART NUMBER | DESCRIPTION | QTY. | REF. NO. | PART NUMBER | DESCRIPTION | QTY. |
|----------|-------------|---|------|----------|-------------|---|------|
| 1 | 000-20179 | 1 3/8 Machinery Bushing | 2 | 53 | 79200923 | Bottom Cover (7" Wide Drive Shield) | 2 |
| 2 | 000-20192 | Adapter Fitting 1/4-28 To 1/8 NPT | A/R | | 79203377 | Bottom Cover (8" Wide Drive Shield) | 2 |
| 3 | 000-24063 | Lock Nut | 4 | 54 | 79201398 | LH Hose Shield | 2 |
| 4 | 79202316 | Grease Hose | 4 | 55 | 79201758 | Bearing Support | 2 |
| 5 | 000-25168 | "HC" V-Belt Set Of 3 | 2 | 56 | 79201817 | Outside Shield (Used On 18 Ft. Shredders) | 2 |
| 6 | 000-28511 | Drive Shaft Sheave | 2 | | 79203504 | Outside Shield (18 Ft. Shredders) (WO/Reducers) | 2 |
| 7 | 79201781 | Cylinder Sheave | 2 | | 79201819 | Outside Shield (20 Ft. Shredders) (W/Reducer) | 2 |
| 8 | 000-64011 | Shield Plate | A/R | | 79204114 | Outside Shield (20 Ft. Shredders) (WO/Reducer) | 2 |
| 9 | 000-65186 | Spring Anchor | 2 | 57 | 79200956 | Idler Assembly | 2 |
| 10 | 000-65223 | Threaded Handle | 4 | 58 | 79200967 | Lower Hitch Pin | 2 |
| 11 | 79201071 | 18' Flipper Shield Rod (Used On 18 Ft. Shredder Only) | 2 | 59 | 952-003-006 | SAE Washer 3/8 Inch | 8 |
| | 000-65627 | Rod (Used On 20 Ft. Shredder Only) | 2 | 60 | 79201779 | RH Line Shield | 1 |
| 12 | 950-003-054 | Carriage Bolt 3/8-16 x 3/4 SS Gr. 5 | 6 | 61 | 952-004-067 | Flat Washer 1/2 Inch Hardened | 5 |
| 13 | 950-001-013 | Hex Head Cap Screw 3/8-16 x 3 Gr. 8 | 2 | 62 | 952-001-004 | Lock Washer 1/2 Inch | A/R |
| 14 | 034-05168 | Uni-Torque Lock Nut 3/8-16 | 2 | 63 | 79202088 | Shield Spacer 1/16" Thick | A/R |
| 15 | 034-05170 | Uni-Torque Lock Nut 1/2-13 | 32 | 64 | 79201780 | Cylinder Lug | 2 |
| 16 | 034-05172 | Uni-Torque Lock Nut 5/8-11 | 6 | 65 | 951-005-003 | Mac Lock Nut 3/8-16 | 48 |
| 17 | 953-001-002 | Square Cut Cotter Pin, 1/8 x 1 | 6 | 66 | 950-003-028 | Carriage Bolt 1/2-13 x 1 1/4 | A/R |
| 18 | 953-001-010 | Square Cut Cotter Pin, 1/4 x 1 1/2 | 4 | 67 | 950-002-014 | Hex Head Flanged Whiz Lock Bolt 3/8-16 x 1 1/4 | 17 |
| 19 | 035-60063 | Woodruff Key 1/2 x 2 3/4 | 4 | 68 | 950-002-010 | Hex Head Flanged Whiz Lock Bolt 3/8-16 x 1 1/2 | 4 |
| 20 | 203-51251 | 45° Elbow Lube Line 1/4-28 To 1/8 NPT | A/R | 69 | 79201120 | Shield Bumper | 4 |
| 21 | 203-51254 | 45° Elbow 1/8 NPT To 1/8 NPT | A/R | 70 | 950-002-009 | Hex Head Flanged Whiz Lock Bolt 3/8-16 x 1 | 12 |
| 22 | 400-27039 | Q.D. Hub, Type "E", 2 Bore | 4 | 71 | 950-001-024 | Hex Head Cap Screw 5/8-11 x 2 1/2 Gr. 8 | 6 |
| 23 | 400-34074 | Tubular Mount Jack | 1 | 72 | 79201815 | LH 18' Cylinder Assembly Cup Knife | 1 |
| 24 | 51700216 | Gear Box Assembly, 1000 RPM | 1 | | 79201880 | LH 18' Cylinder Assembly Side Slice | 1 |
| 25 | 79203223 | 2" Spherical Bearing | A/R | | 79203209 | LH 20' Cylinder Assembly Cup Knife | 1 |
| 26 | | Flange Bearing, 2" Shaft (See Page 6, Sec. 4) | A/R | | 79203214 | LH 20' Cylinder Assembly Side Slice | 1 |
| 27 | 60400524 | Relube Flange WO/Fitting | A/R | | 79203212 | LH 20' Cylinder Assembly Cup Knife & Side Slice | 1 |
| 28 | 60400525 | Relube Flange W/Fitting | A/R | 73 | 79201816 | RH 18' Cylinder Assembly Cup Knife | 1 |
| 29 | 203-50003 | Grease Zerk 1/4-28 | 5 | | 79201879 | RH 18' Cylinder Assembly Side Slice | 1 |
| 30 | 79201397 | RH Hose Shield (Shown) | 1 | | 79203197 | RH 20' Cylinder Assembly Cup Knife | 1 |
| 31 | 710-05332 | Washer | A/R | | 79203213 | RH 20' Cylinder Assembly Side Slice | 1 |
| 32 | 710-05333 | Washer | A/R | | 79203211 | RH 20' Cylinder Assembly Cup Knife & Side Slice | 1 |
| 33 | 520-03138 | Outer Decal | 2 | 74 | 79201037 | Shield Assembly | 1 |
| 34 | 715-03174 | Lift Here Decal | 2 | 75 | 79201861 | RH Cover Assembly | 1 |
| 35 | 850-001-305 | Red Reflective Strip | 3 | 76 | 79201860 | LH Cover Assembly (Not Shown) | 1 |
| 36 | 850-001-285 | Amber Reflective Strip | 3 | 77 | 79202087 | Shield Spacer 1/8" Thick | A/R |
| 37 | 79203023 | Decal Spring Instruction | 2 | 78 | 79201778 | LH Line Shield | 1 |
| 38 | 71504126 | Important Decal | 1 | 79 | 950-001-301 | Hex Head Cap Screw 1/2-13 x 4 1/4 Gr. 5 | 4 |
| 39 | 71505171 | Warning Decal | 2 | 80 | 950-001-112 | Hex Head Cap Screw 1/2-13 x 2 Gr. 5 | A/R |
| 40 | 71504131 | Danger Decal | 1 | 81 | 950-001-111 | Hex Head Cap Screw 1/2-13 x 1 1/4 Gr. 5 | A/R |
| 41 | 71504136 | Important Decal | 2 | 82 | 000-69096 | Hose Carrier (Used On Trail Shredders) | 1 |
| 42 | 79201818 | Inside Shield (Used On 18 Ft Shredders) | 2 | 83 | 71505169 | Warning Decal | 2 |
| | 7904120 | Inside Shield (18 Ft Shredders) (WO/Reducers) | 2 | 84 | 71505167 | Decal 1700 | 2 |
| | 79201820 | Inside Shield (20 Ft Shredders) (W/Reducers) | 2 | 85 | 71505170 | Warning Decal | 2 |
| | 79204113 | Inside Shield (20 Ft Shredders) (WO/Reducers) | 2 | 86 | 71504133 | Important Decal | 1 |
| 43 | 71505168 | "Hiniker" Decal | 6 | 87 | 71504132 | Caution Decal | 1 |
| 44 | 720-02399 | 3/8 Cable Clamp | 4 | 88 | 71504129 | Caution Decal | 1 |
| 45 | 79201928 | 18 Ft. Shield Plate (Used On 18 Ft. Shredder Only) | 2 | 89 | 79201218 | Rockshaft Repair Kit 18 Ft | 1 |
| 46 | 79200825 | Anti-Wrap Ring | 6 | | 79201216 | Rockshaft Repair Kit 20 Ft | 1 |
| 47 | 79203157 | Anti-Wrap Shield Weldment | 2 | 90 | 79203259 | Grease Decal | A/R |
| 48 | 79200836 | Splined Coupler W/Fittings | 2 | 91 | 950-002-013 | Hex Head Flanged Whiz Lock Bolt 1/2-13 x 1 1/2 | 4 |
| 49 | 79200860 | Bearing Support | 2 | 92 | 955-001-010 | Grease Fitting 1/8-27 x 90° | 2 |
| 50 | 79200866 | Take Up Bar | 2 | 93 | 79203951 | External Snap Ring 2" Heavy Duty | 2 |
| 51 | 79200913 | 18' Solid Line Shaft | 2 | 94 | 79203969 | Chain Coupling Weldment (Can Replace Item 48) | 4 |
| | 79200914 | 20' Solid Line Shaft | 2 | 95 | 79203966 | #60 Double Chain | 2 |
| 52 | 79200920 | Shield Rod | 2 | | | | |

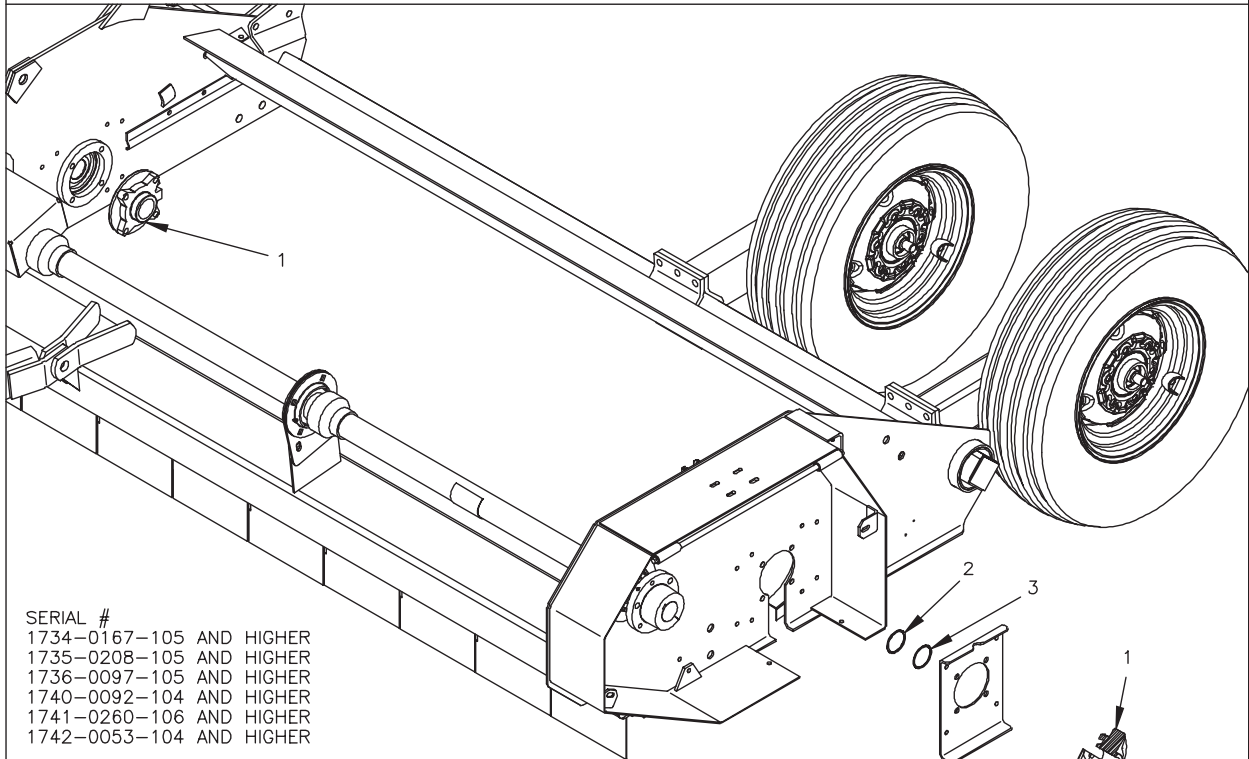
HINIKER 1700 SHREDDER

SEC 4



SERIAL #
 ALL 12 FT MODELS SERIAL# (1731,1732)
 1734-0166-104 AND LOWER
 1735-0207-104 AND LOWER
 1736-0096-104 AND LOWER
 ALL 18 FT MODELS SERIAL# (1737, 1738, 1739)
 1740-0091-103 AND LOWER
 1741-0259-105 AND LOWER
 1742-0052-103 AND LOWER

| REF. NO. | PART NUMBER | DESCRIPTION | QTY | REF. NO. | PART NUMBER | DESCRIPTION | QTY |
|----------|-------------|------------------------------|-----|----------|-------------|---------------------------------------|-----|
| 1 | 79203218 | FLANGE BEARING 2" SHAFT | A/R | 5 | 000-20192 | ADAPTER STRAIGHT, 1/4-28 TO 1/8 NPT | A/R |
| 2 | 79203243 | 2" ROTOR BRG REPLACEMENT KIT | A/R | 6 | 203-51251 | ADAPTER 45° ELBOW, 1/4-28 TO 1/8 NPT | A/R |
| 3 | 710-05333 | SHIM WASHER, 16 GA. | A/R | 7 | 203-51254 | ADAPTER 45° ELBOW, 1/8 NPT TO 1/8 NPT | A/R |
| 4 | 710-05332 | SHIM WASHER, 10 GA. | A/R | | | | |



SERIAL #
 1734-0167-105 AND HIGHER
 1735-0208-105 AND HIGHER
 1736-0097-105 AND HIGHER
 1740-0092-104 AND HIGHER
 1741-0260-106 AND HIGHER
 1742-0053-104 AND HIGHER

| REF. NO. | PART NUMBER | DESCRIPTION | QTY |
|----------|-------------|-------------------------|-----|
| 1 | 79203218 | FLANGE BEARING 2" SHAFT | A/R |
| 2 | 710-05333 | SHIM WASHER, 16 GA. | A/R |
| 3 | 710-05332 | SHIM WASHER, 10 GA. | A/R |

DWG. NO.6735

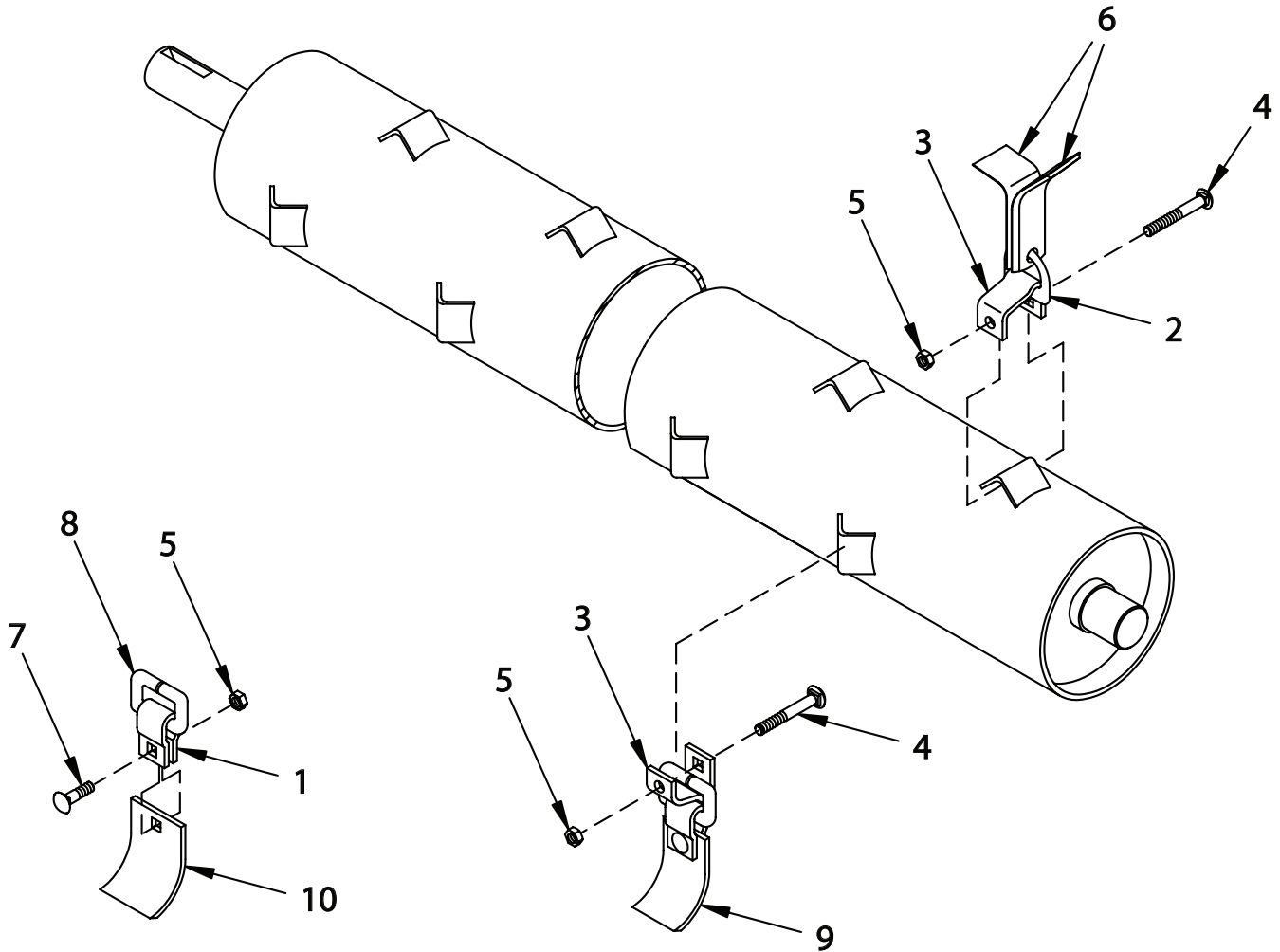
SECTION 5

COMPONENT PARTS

| | |
|---------------|--|
| PAGE 2 | KNIFE & ROTOR ASSEMBLY |
| PAGE 3 | IDLER ASSEMBLY |
| PAGE 3 | SMV SIGN ASSEMBLY |
| PAGE 4 | TIRE, RIM, & WHEEL LEG ASSEMBLY |

HINIKER 1700 SHREDDER

KNIFE & ROTOR ASSEMBLY CUP KNIFE & SIDE SLICER



SEC 5

DWG. NO. 3185

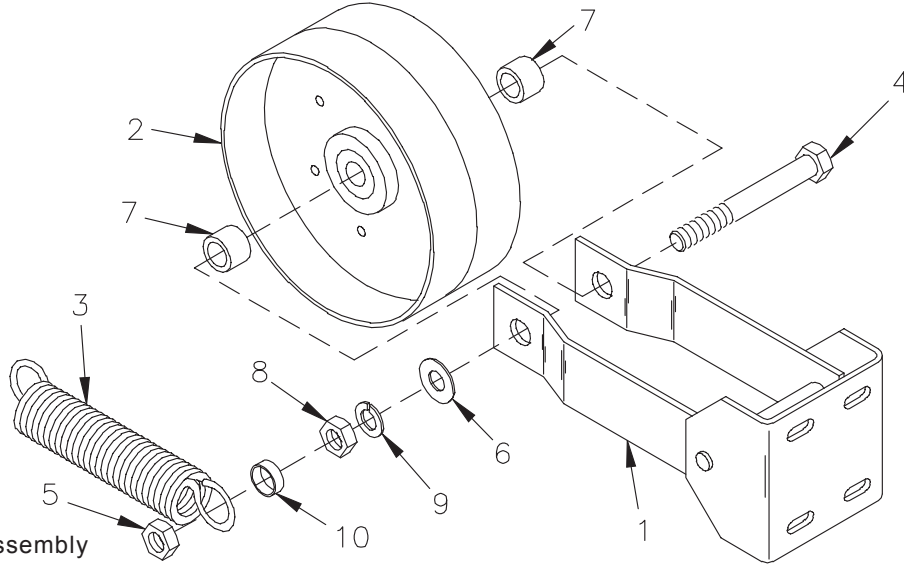
| REF. NO. | QUANTITY ONLY CUP KNIFE OR SIDE SLICER | | | | * QUANTITY COMBINATION CUP KNIFE & SIDE SLICER | | |
|----------|--|-----|-----|-----|--|-----|-----|
| | 12' | 15' | 18' | 20' | 15' | 18' | 20' |
| 1 | 48 | 72 | 72 | 96 | 48 | 48 | 64 |
| 2 | 48 | 72 | 72 | 96 | 24 | 24 | 32 |
| 3 | 48 | 72 | 72 | 96 | 72 | 72 | 96 |
| 4 | 48 | 72 | 72 | 96 | 72 | 72 | 96 |
| 5 | 96 | 144 | 144 | 192 | 120 | 120 | 160 |
| 6 | 96 | 144 | 144 | 192 | 48 | 48 | 64 |
| 7 | 48 | 72 | 72 | 96 | 48 | 48 | 64 |
| 8 | 48 | 72 | 72 | 96 | 48 | 48 | 64 |
| 9 | 48 | 72 | 72 | 96 | 48 | 48 | 64 |
| 10 | 48 | 72 | 72 | 96 | 48 | 48 | 64 |

* Note: See operators manual (assembly section) for proper knife arrangement.

| REF. NO. | PART NUMBER | DESCRIPTION | QTY. | REF. NO. | PART NUMBER | DESCRIPTION | QTY. |
|----------|-------------|---------------------------------|------|----------|-------------|---|------|
| 1 | 000-65227 | Knife Hanger | A/R | 7 | 030-16132 | Carriage Bolt 1/2 x 1 1/2 Gr. 5 | A/R |
| 2 | 000-65142 | D-Ring | A/R | 8 | 000-65144 | Square Ring | A/R |
| 3 | 000-65141 | Knife Pivot | A/R | 9 | 79203812 | 3" Cup Knife Assembly (Includes Items 1, 5, 7, 8, 10) | A/R |
| 4 | 030-16139 | Carriage Bolt 1/2 x 3 1/4 Gr. 5 | A/R | | 79203811 | 3" Cup Knife Assembly Hard Surfaced (Includes Items 1, 5, 7, 8, 10) | A/R |
| 5 | 034-05170 | Lock Nut | A/R | 10 | 79201431 | Cup Knife | A/R |
| 6 | 000-65143 | Side Knife | A/R | | 79203349 | Cup Knife Hard Surfaced | A/R |

HINIKER 1700 SHREDDER

IDLER ASSEMBLY



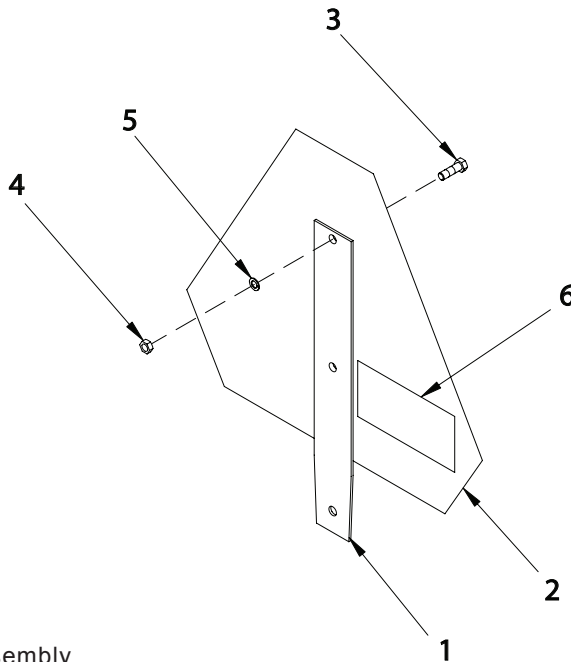
79200956 Idler Assembly

DWG. NO. 2514

| REF. NO. | PART NUMBER | DESCRIPTION | QTY. | REF. NO. | PART NUMBER | DESCRIPTION | QTY. |
|----------|-------------|--------------------------------------|------|----------|-------------|---------------------------|------|
| 1 | 79200955 | Idler Weldment | 1 | 7 | 400-10466 | Spacer | 2 |
| 2 | 51599031 | 8" Idler Pulley | 1 | 8 | 951-001-009 | Hex Nut 3/4-10 | 1 |
| 3 | 725-03047 | Extension Spring | 1 | 9 | 952-001-006 | Lock Washer 3/4 Inch | 1 |
| 4 | 031-06365 | Hex Head Cap Screw 3/4 -10 x 5 Gr. 5 | 1 | 10 | 79202310 | Spacer 5/16 x 3/4 Conduit | 1 |
| 5 | 951-005-037 | Lock Nut 3/4-10 2-Way | 1 | | 79200956 | Complete Idler Assembly | |
| 6 | 033-12013 | Flat Washer 3/4 Inch | 1 | | | | |

S E C 5

SMV SIGN ASSEMBLY



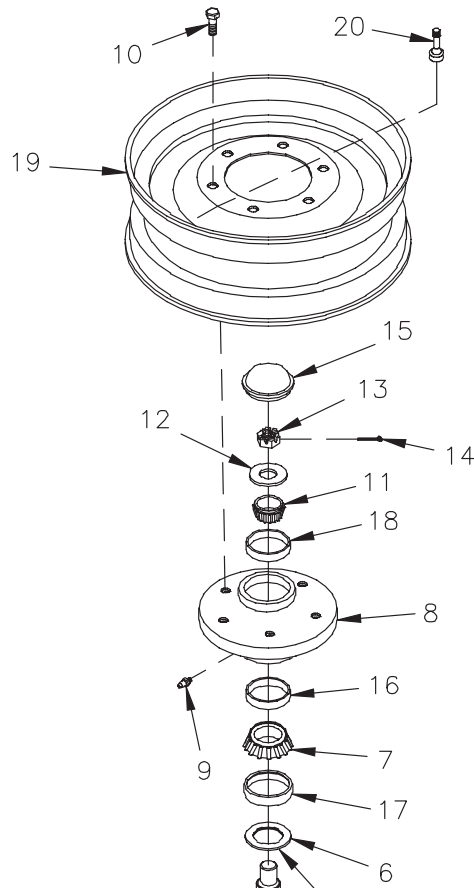
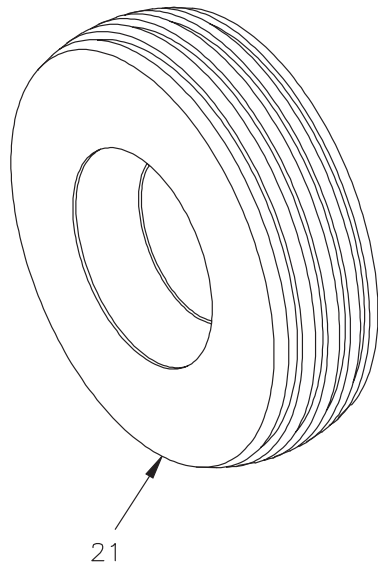
790-41218 SMV And Mount Assembly

DWG. NO. 2521

| REF. NO. | PART NUMBER | DESCRIPTION | QTY. | REF. NO. | PART NUMBER | DESCRIPTION | QTY. |
|----------|-------------|---|------|----------|-------------|----------------------------|------|
| 1 | 400-22083 | Mount | 1 | 5 | 033-22007 | Lock Washer #10 | 2 |
| 2 | 850-001-354 | SMV Emblem | 1 | 6 | 715-03056 | Caution Decal | 1 |
| 3 | 031-10599 | Machine Screw #10-24 x 1/2 Slotted Round Head | 2 | | 790-41218 | Complete SMV Sign Assembly | |
| 4 | 951-001-002 | Hex Nut #10-24 | 2 | | | | |

HINIKER 1700 SHREDDER

TIRE, RIM, & WHEEL LEG ASSEMBLY



NOTE:
SMOOTH SIDE OF SEAL
TO BE ON THIS SIDE

DWG. NO. 5607

| REF. NO. | PART NUMBER | DESCRIPTION | QTY. | REF. NO. | PART NUMBER | DESCRIPTION | QTY. |
|----------|-------------|---|------|----------|-------------|---|------|
| 1 | 79203210 | Wheel Leg Weldment (See Drawing Above) | 1 | 13 | 951-005-002 | Slotted Nut 7/8-14 | 1 |
| 2 | 79203647 | Clamp Plate Weldment | 1 | 14 | 953-001-017 | Square Cut Cotter Pin 5/32 x 1 1/2 | 1 |
| 3 | 951-001-008 | Hex Nut 5/8-11 | 6 | 15 | 850-001-155 | Dust Cap | 1 |
| 4 | 952-001-005 | Lock Washer 5/8 | 6 | 16 | 850-001-159 | Rear Cup JL 69310 | 1 |
| 5 | 950-001-023 | Hex Head Cap Screw 5/8-11 x 2 Gr. 5 | 6 | 17 | 850-001-555 | Wear Sleeve | 1 |
| 6 | 850-001-164 | Triple Lip Seal | 1 | 18 | 850-001-158 | Front Cup LM 67010 | 1 |
| 7 | 850-001-154 | Cone JL69349 | 1 | 19 | 850-001-828 | 5" x 15 Rim - 6 Bolt Black (Not Part Of Assembly) | 1 |
| 8 | 850-003-053 | Hub W/Wear Sleeve (Includes 16, 17, 18) | 1 | | 79203368 | 8" x 15 Rim 6-Bolt (Not Part Of Assembly) | 1 |
| 9 | 955-001-001 | Grease Fitting 1/8-27 NPT | 1 | 20 | 80504793 | Tire Valve (Not Part Of Assembly) | 1 |
| 10 | 950-011-006 | Wheel Bolt 1/2-20 x 1 | 6 | 21 | 805-001-154 | 7.6 x 15 Tire 8 Ply | 1 |
| 11 | 850-001-153 | Cone LM67048 | 1 | | 850-002-669 | 9.5L x 15 Tire 8 Ply | 1 |
| 12 | 802-000-007 | Flat Washer 7/8 Inch | 1 | | 79203649 | Wheel Leg Assembly (Includes Items 1-18) | 1 |

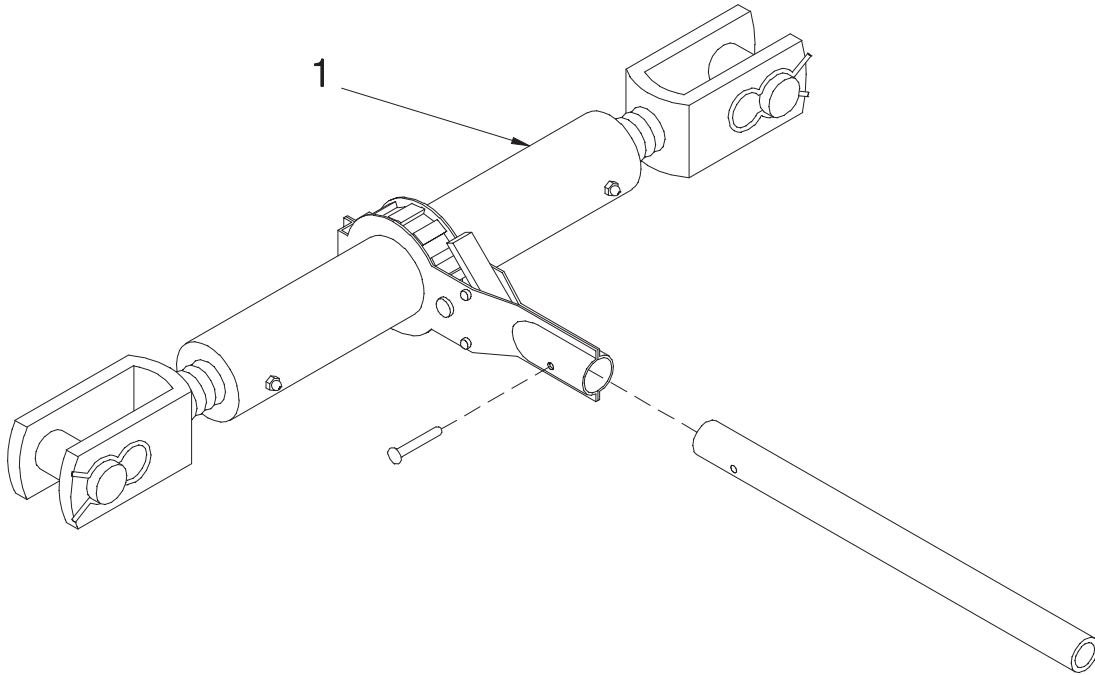
SECTION 6

OPTIONAL EQUIPMENT

| | |
|--------|---|
| PAGE 2 | RATCHET JACK ASSEMBLY |
| PAGE 2 | GRASS DIVIDER |
| PAGE 3 | MANUAL END TRANSPORT KIT |
| PAGE 4 | MANUAL END TRANSPORT HUB & SPINDLE ASSEMBLY |
| PAGE 4 | HYDRAULIC CYLINDER STOP BLOCK SET |
| PAGE 5 | HYDRAULIC END TRANSPORT (20' ONLY) |
| PAGE 6 | PTO SHAFT HOLDER |
| PAGE 6 | SKID SHOES |
| PAGE 7 | SAFETY LIGHTING FIELD USE ONLY |
| PAGE 7 | SAFETY LIGHTING END TRANSPORT/FIELD USE |
| PAGE 8 | HYDRAULIC LIFT KIT 18' AND 20' |
| PAGE 8 | HYDRAULIC LIFT KIT 15' |
| PAGE 9 | HYDRAULIC CYLINDER 2 1/2 X 8 |
| PAGE 9 | HYDRAULIC CYLINDER 3 X 8 |

HINIKER 1700 SHREDDER

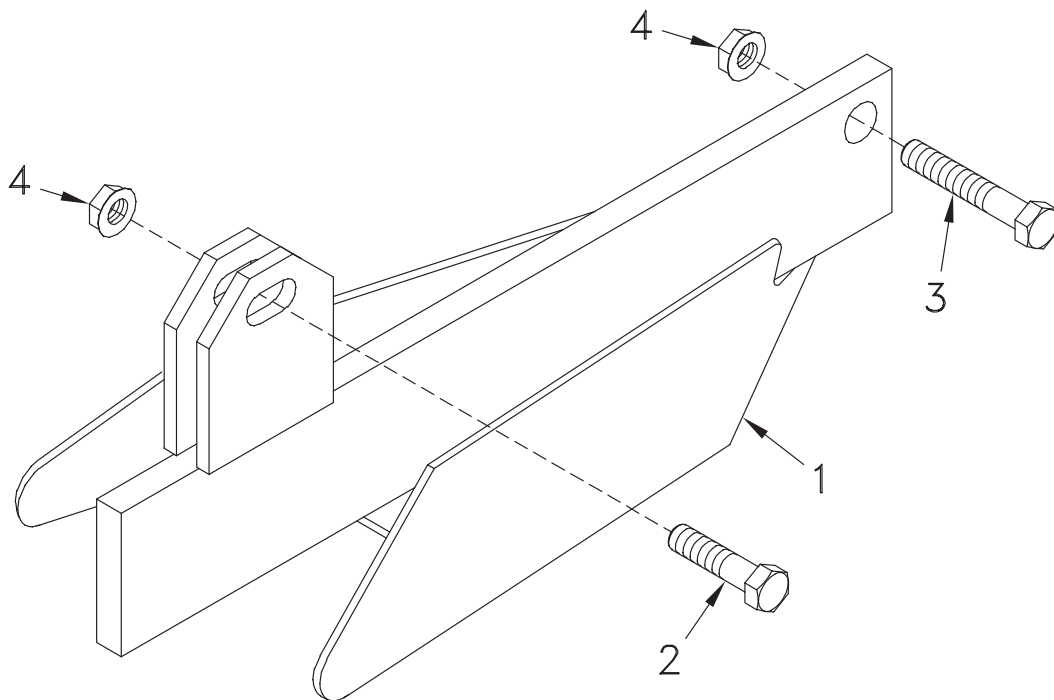
RACHET JACK ASSEMBLY



DWG. NO. 2502

| REF. NO. | PART NUMBER | DESCRIPTION | QTY. | REF. NO. | PART NUMBER | DESCRIPTION | QTY. |
|----------|-------------|-----------------------|------|----------|-------------|-------------|------|
| 1 | 000-04067 | Ratchet Jack Assembly | 1 | | | | |

GRASS DIVIDER



79201854 Grass Divider Assembly

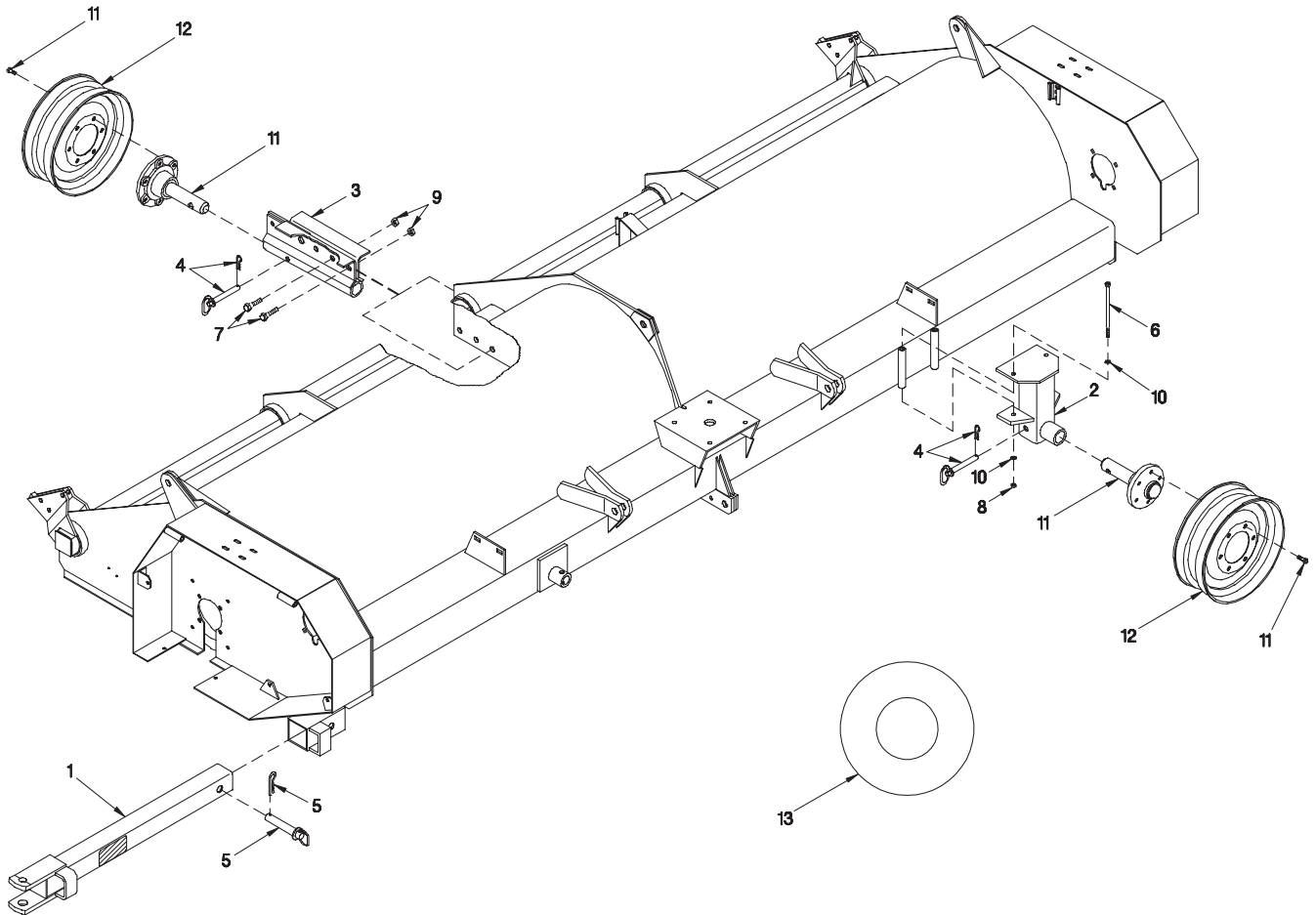
DWG. NO. 3172

| REF. NO. | PART NUMBER | DESCRIPTION | QTY. | REF. NO. | PART NUMBER | DESCRIPTION | QTY. |
|----------|-------------|---|------|----------|-------------|--|------|
| 1 | 79201851 | Grass Divider Weldment | 1 | 3 | 031-06208 | Hex Head Cap Screw 1/2-13 x 2 1/4 Gr.5 | 1 |
| 2 | 950-002-013 | Hex Head Flanged Lock Bolt 1/2-13 x 1 1/2 | 1 | 4 | 951-005-055 | Mac Lock Nut 1/2-13 | 2 |

STEP 6

HINIKER 1700 SHREDDER

MANUAL END TRANSPORT KIT FOR USE ON 12', 15', 18' AND (20' SN 1740-0090-103 AND LOWER) (20' SN 1741-0244-103 AND LOWER) (20' SN 1742-0047-103 AND LOWER)



6

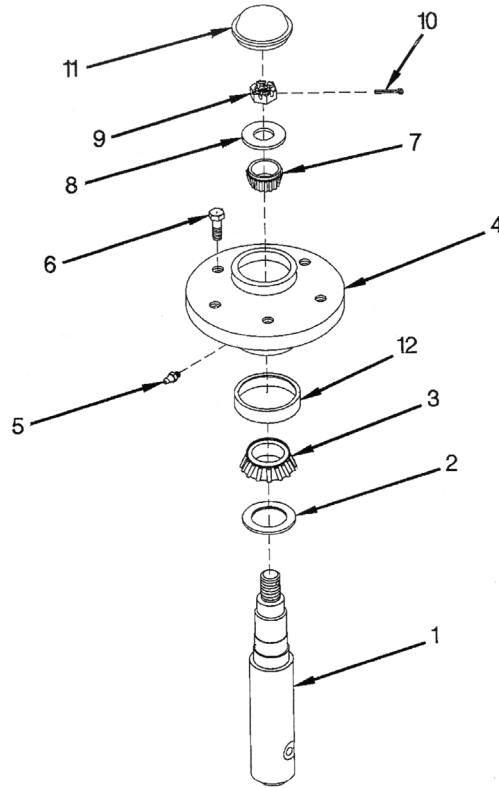
1751 End Transport Kit

DWG. NO. 3186

| REF. NO. | PART NUMBER | DESCRIPTION | QTY. | REF. NO. | PART NUMBER | DESCRIPTION | QTY. |
|----------|-------------|---|------|----------|-------------|--------------------------------|------|
| 1 | 79201040 | Transport Tongue Assembly | 1 | 8 | 034-05170 | UNI-Torque Lock Nut 1/2-13 | 2 |
| 2 | 79201887 | Front Transport Mount Weldment | 1 | 9 | 034-05173 | UNI-Torque Lock Nut 3/4-10 | 3 |
| 3 | 79200977 | Rear Transport Weldment | 1 | 10 | 952-003-004 | SAE Flat Washer 1/2 Inch | 4 |
| 4 | 850-001-309 | Hitch Pin Assembly | 2 | 11 | 79201044 | End Transport Spindle Assembly | 2 |
| 5 | 000-20255 | Clevis Pin Assembly | 1 | 12 | 850-001-828 | 5 x 15 Rim - 6 Bolt | 2 |
| 6 | 950-001-246 | Hex Head Cap Screw 1/2-13 x 7 1/2 Gr. 5 | 2 | 13 | 805-001-154 | 7.60 x 15 Tire 8 Ply | A/R |
| 7 | 950-001-166 | Hex Head Cap Screw 3/4-10 x 2 Gr. 5 | 3 | | | | |

HINIKER 1700 SHREDDER

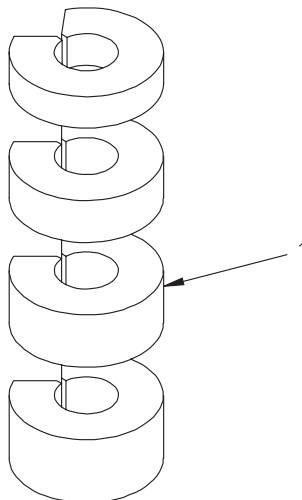
MANUAL END TRANSPORT HUB & SPINDLE ASSEMBLY



DWG. NO. 2519

| REF. NO. | PART NUMBER | DESCRIPTION | QTY. | REF. NO. | PART NUMBER | DESCRIPTION | QTY. |
|----------|-------------|--------------------------------------|------|----------|-------------|------------------------------------|------|
| 1 | 79201028 | Spindle End Transport | 1 | 8 | 802-000-007 | Washer 7/8 | 1 |
| 2 | 850-001-164 | Triple Lip Seal | 1 | 9 | 951-005-002 | Slotted Nut 7/8-14 | 1 |
| 3 | 850-001-154 | Cone JL69349 | 1 | 10 | 953-001-017 | Square Cut Cotter Pin 5/32 x 1 1/2 | 1 |
| 4 | 850-003-053 | Hub W/Wear Sleeve (Includes Item 12) | 1 | 11 | 850-001-155 | Dust Cap | 1 |
| 5 | 955-001-001 | Grease Fitting 1/8-27 NPT | 1 | 12 | 850-001-555 | Wear Sleeve | 1 |
| 6 | 950-011-006 | Wheel Bolt 1/2-20 x 1 | 6 | | 79201044 | Complete Spindle Assembly | |
| 7 | 850-001-153 | Cone LM67048 | 1 | | | | |

HYDRAULIC CYLINDER STOP BLOCK SET



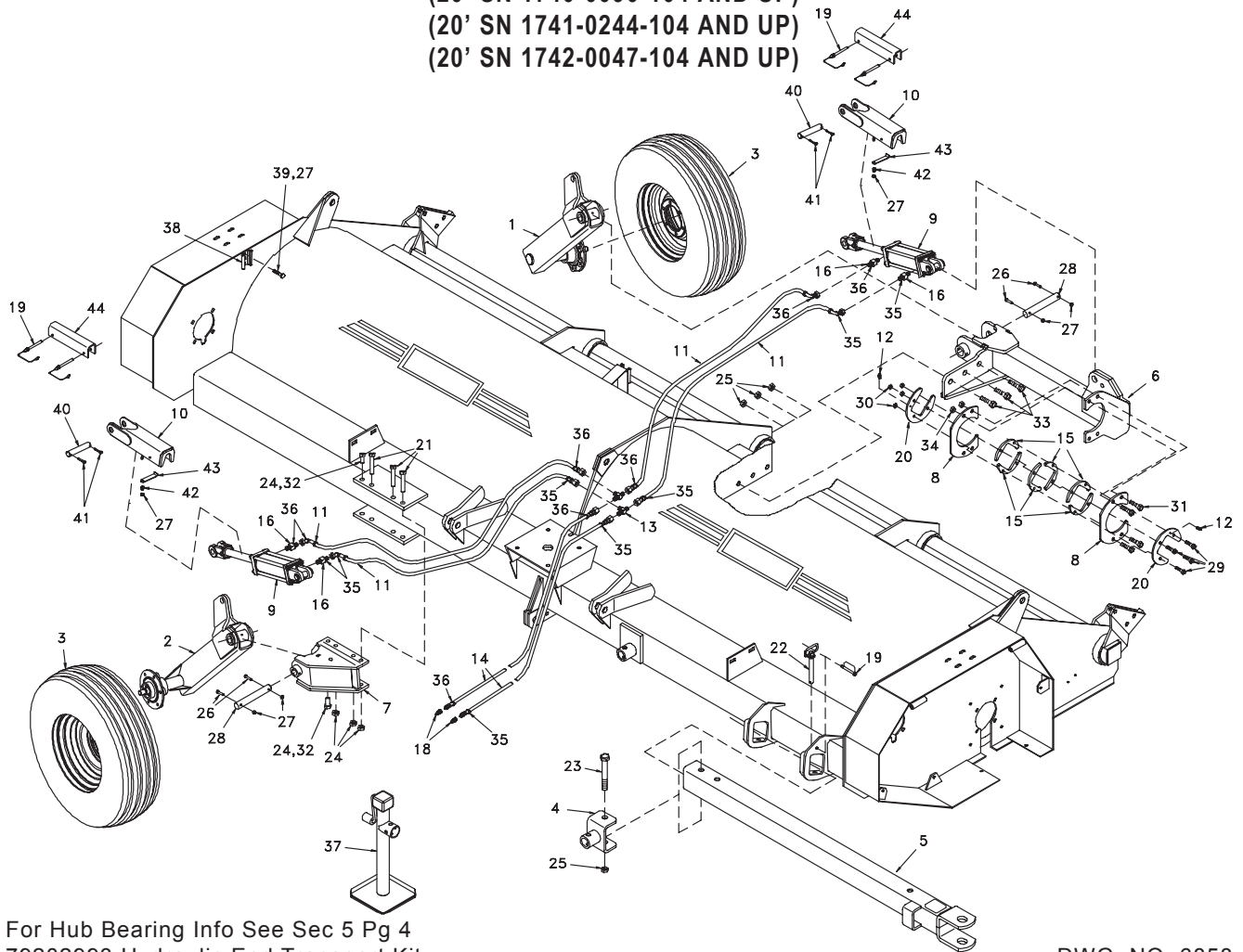
DWG. NO. 6857

| REF. NO. | PART NUMBER | DESCRIPTION | QTY. | REF. NO. | PART NUMBER | DESCRIPTION | QTY. |
|----------|-------------|-----------------------------------|------|----------|-------------|-------------|------|
| 1 | 79203414 | Hydraulic Cylinder Stop Block Set | 1 | | | | |

6 CEMS

HINIKER 1700 SHREDDER

HYDRAULIC END TRANSPORT KIT FOR USE ON 20' ONLY (20' SN 1740-0090-104 AND UP) (20' SN 1741-0244-104 AND UP) (20' SN 1742-0047-104 AND UP)



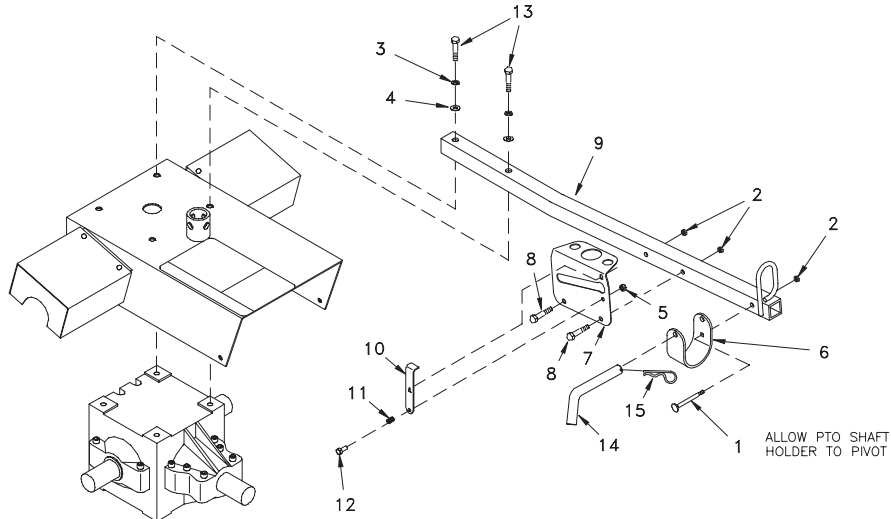
For Hub Bearing Info See Sec 5 Pg 4
79202993 Hydraulic End Transport Kit

DWG. NO. 6858

| REF. NO. | PART NUMBER | DESCRIPTION | QTY. | REF. NO. | PART NUMBER | DESCRIPTION | QTY. |
|----------|-------------|--|------|----------|-------------|--|------|
| 1 | 79202985 | Rear Wheel Leg Assembly | 1 | 23 | 950-001-152 | Hex Head Cap Screw 3/4-10 x 6 Gr. 5 | 1 |
| 2 | 79202669 | Front Wheel Leg Assembly | 1 | 24 | 060756 | Lock Nut 5/8-11 Nylon Insert | 5 |
| 3 | 79203351 | Tire & Rim Assembly 9.5L-15 x 12 Ply | 2 | 25 | 034-05173 | Lock Nut 3/4-10 Gr. B Uni-Torque | 4 |
| 4 | 79202987 | Jack Clevis Weldment | 1 | 26 | 950-001-097 | Hex Head Cap Screw 5/16-18 x 2 1/2 Gr. 5 | 4 |
| 5 | 79203388 | End Trans Hitch W/Decal Assembly | 1 | 27 | 951-005-036 | Lock Nut 5/16-18 Mac Loc | 8 |
| 6 | 79202978 | Rear Transport Pivot Weldment | 1 | 28 | 79202681 | Pin | 2 |
| 7 | 79203378 | Front Weldment | 1 | 29 | 950-001-092 | Hex Head Cap Screw 3/8-16 x 1 3/4 Gr. 5 | 4 |
| 8 | 79202988 | Bracket, Pivot Clamp | 2 | 30 | 951-005-051 | Lock Nut 3/8-16, 2 Way | 4 |
| 9 | 79202368 | Hydraulic Cylinder 3 x 8 (See Sec 6 Pg 9) Lion | 2 | 31 | 950-001-125 | Hex Head Cap Screw 1/2-13 x 1 1/2 Gr. 5 | 4 |
| 10 | 79203419 | Cylinder Stop | 2 | 32 | 950-001-023 | Hex Head Cap Screw 5/8-11 x 2 Gr. 5 | 2 |
| 11 | 957-021-001 | Hose Assembly 1/4 x 54" | 4 | 33 | 950-001-166 | Hex Head Cap Screw 3/4-10 x 2 Gr. 5 | 3 |
| 12 | 955-001-002 | Grease Fitting 1/4-28 | 2 | 34 | 034-05170 | Lock Nut 1/2 Gr. B Stover | 4 |
| 13 | 956-007-023 | Bulkhead Fitting-Tee 9/16 JIC | 2 | 35 | 921-001-490 | Green Cable Tie | 8 |
| 14 | 957-029-001 | Hose Assembly 1/4 x 120" | 2 | 36 | 921-001-487 | Red Cable Tie | 8 |
| 15 | 79202989 | Rockshaft Bearing | 6 | 37 | 79203524 | Tubular Mount Jack 10" Travel | 1 |
| 16 | 956-003-001 | Straight Adapter 9/16 To 3/4, .297 ID | 4 | 38 | 400-11027 | Bracket | 1 |
| 17 | 921-001-144 | 14" Plastic Cable Tie | 8 | 39 | 030-16041 | Carriage Bolt 5/16-18 x 3/4 Gr. 5 | 2 |
| 18 | 956-008-036 | Male Hydraulic 3/4 ORB Connector ISO | 2 | 40 | 85501557 | Cylinder Pin | 2 |
| 19 | 623011 | Lynch Pin 5/16 x 2 3/4 | 5 | 41 | 953-001-007 | Cotter Pin 3/16 x 1 1/2 EP Square Cut | 4 |
| 20 | 79202990 | Rockshaft Bearing Cap | 2 | 42 | 79203444 | Compression Spring | 2 |
| 21 | 950-001-165 | Hex Head Cap Screw 5/8-11 x 7 1/2 Gr. 5 | 3 | 43 | 79203436 | Latch | 2 |
| 22 | 79202967 | Hitch Pin | 3 | 44 | 79202686 | Cylinder Stop | 2 |

HINIKER 1700 SHREDDER

PTO HOLDER

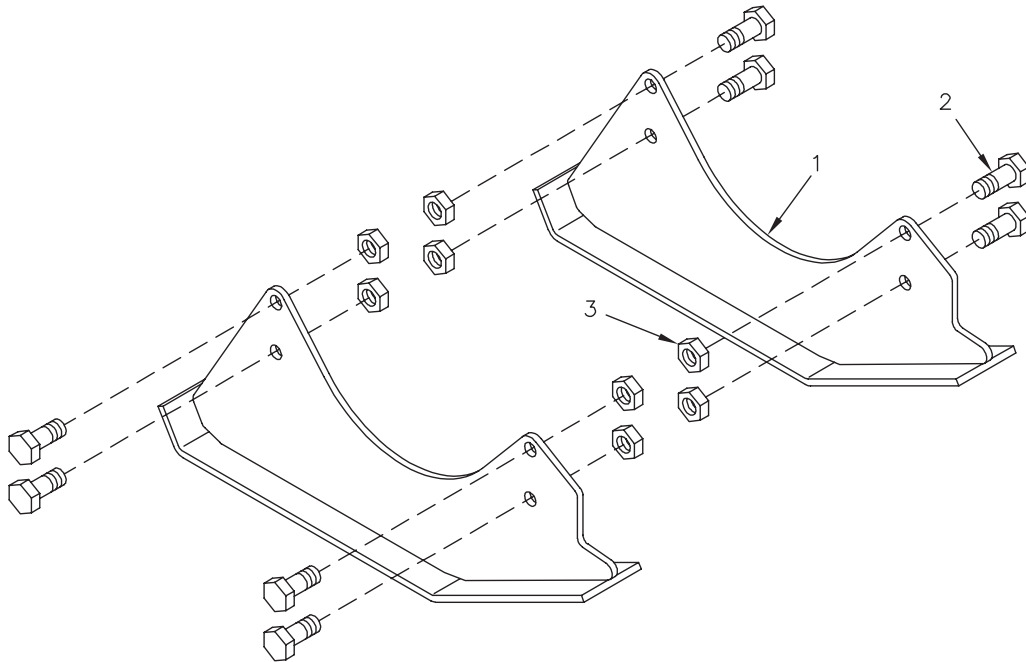


DWG. NO. 6382

| REF. NO. | PART NUMBER | DESCRIPTION | QTY. | REF. NO. | PART NUMBER | DESCRIPTION | QTY. |
|----------|-------------|---|------|----------|-------------|--|------|
| 1 | 950-003-012 | Carriage Bolt 3/8-16 x 2 1/4 Gr. 5 | 1 | 9 | 79202639 | PTO Holder | 1 |
| 2 | 951-005-051 | Lock Nut 3/8-16 2-Way | 3 | 10 | 79203434 | Hose Stop | 1 |
| 3 | 952-001-004 | Lock Washer 1/2 Inch | 2 | 11 | 79203444 | Compression Spring | 1 |
| 4 | 952-004-067 | Flat Washer 1/2 Inch | 2 | 12 | 950-001-200 | Hex Head Cap Screw 5/16-18 x 1 1/4 Gr. 5 | 1 |
| 5 | 951-005-036 | Lock Nut 5/16-18 Mac Loc | 1 | 13 | 950-001-135 | Hex Head Cap Screw 1/2-13 x 2 3/4 Gr. 5 | 2 |
| 6 | 79202740 | PTO Holder | 1 | 14 | 79202739 | Pin | 1 |
| 7 | 79202638 | Mount Plate | 1 | 15 | 953-005-001 | Hair Pin | 1 |
| 8 | 031-06110 | Hex Head Cap Screw 3/8-16 x 2 1/4 Gr. 5 | 2 | | | | |

SEC 6

SKID PLATE KIT



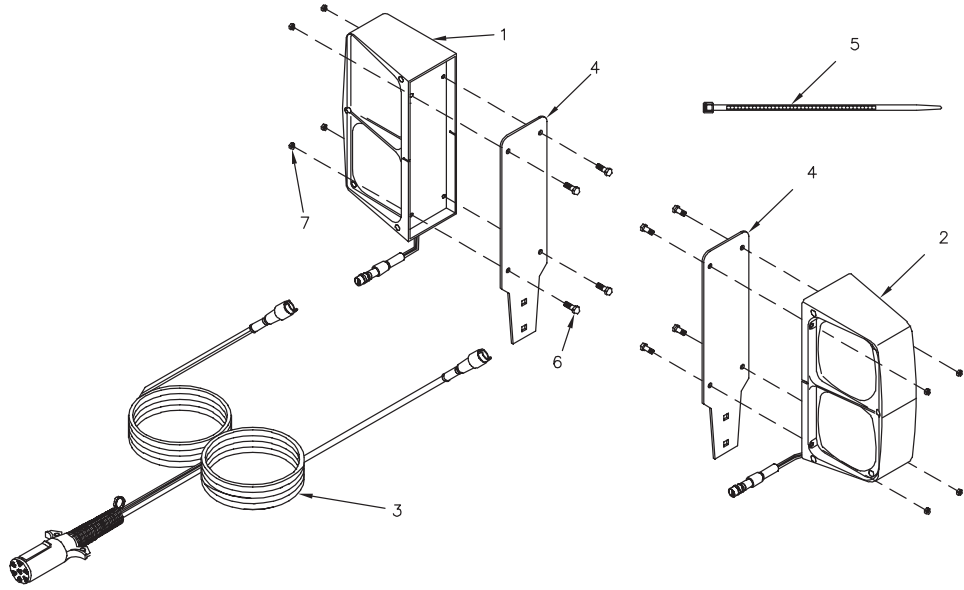
79202306 Skid Plate Kit

DWG. NO. 5941

| REF. NO. | PART NUMBER | DESCRIPTION | QTY. | REF. NO. | PART NUMBER | DESCRIPTION | QTY. |
|----------|-------------|---|------|----------|-------------|--------------------------|------|
| 1 | 79202281 | Skid Weldment | 2 | 3 | 951-005-097 | Lock Nut 3/4-10 Mac-Lock | 8 |
| 2 | 950-001-029 | Hex Head Cap Screw 3/4-10 x 1 3/4 Gr. 5 | 8 | | | | |

HINIKER 1700 SHREDDER

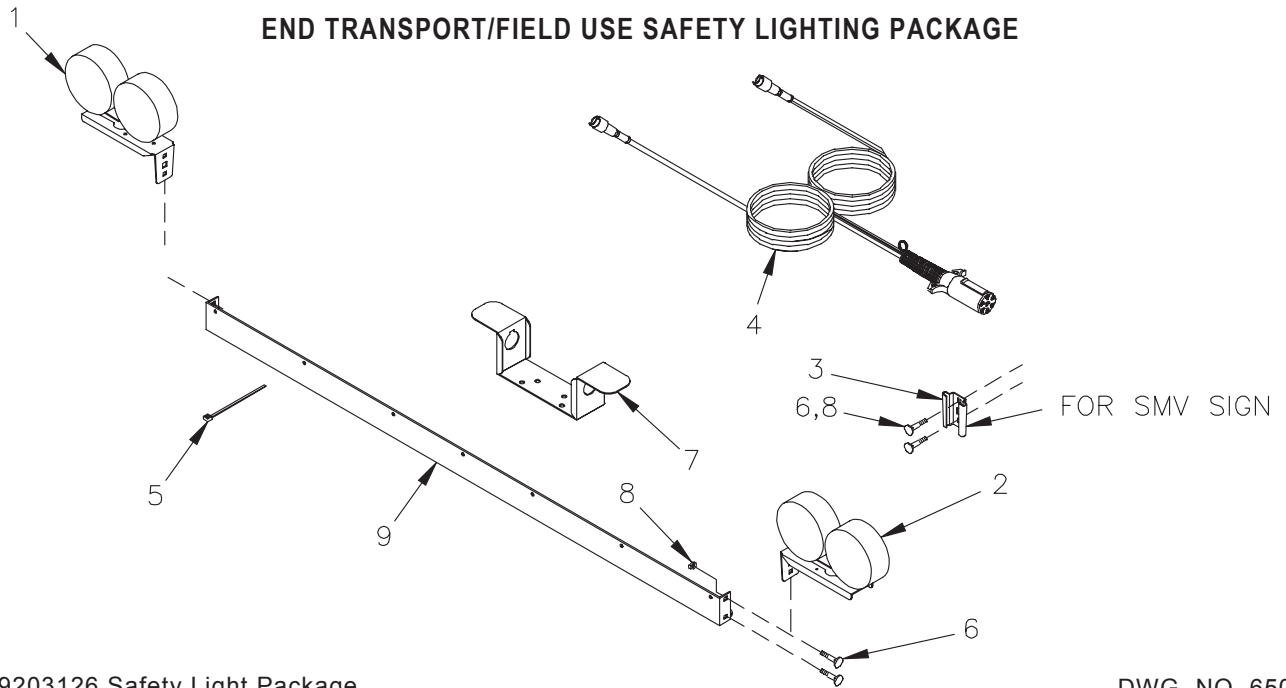
SAFETY LIGHT FIELD USE ONLY



DWG. NO. 5940

| REF. NO. | PART NUMBER | DESCRIPTION | QTY. | REF. NO. | PART NUMBER | DESCRIPTION | QTY. |
|----------|-------------|-------------------------------|------|----------|-------------|-------------------------------------|------|
| 1 | 36100000 | Light, Implement, LH Assembly | 1 | 5 | 367-001-014 | Cable Tie, Black 8 Inch | 12 |
| 2 | 36100001 | Light, Implement, RH Assembly | 1 | 6 | 031-06006 | Hex Head Cap Screw 1/4-20 x 1 Gr. 5 | 8 |
| 3 | 38809028 | Harness, Lighting | 1 | 7 | 951-005-089 | Hex Nut 1/4-20 2-Way | 8 |
| 4 | 79202294 | Light Bracket | 2 | | | | |

END TRANSPORT/FIELD USE SAFETY LIGHTING PACKAGE



79203126 Safety Light Package

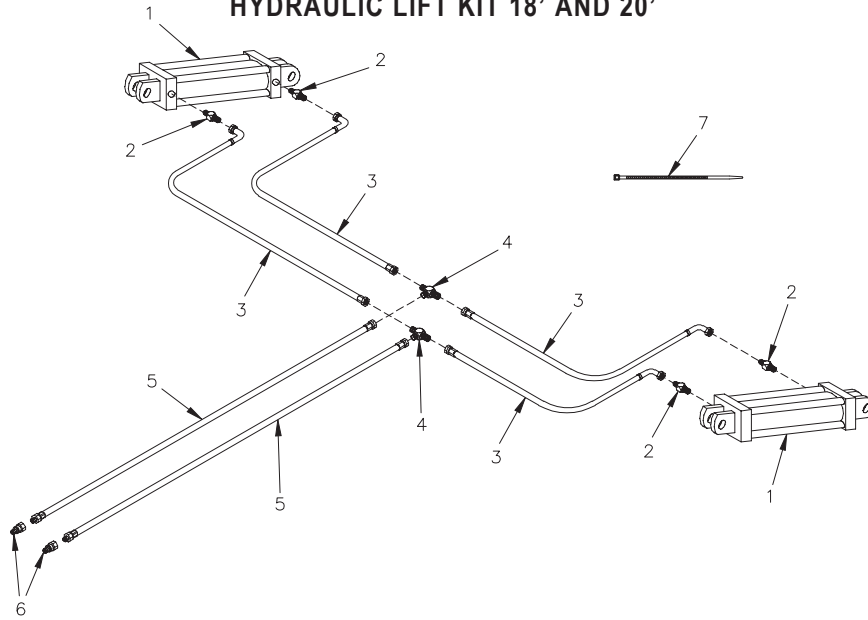
DWG. NO. 6506

| REF. NO. | PART NUMBER | DESCRIPTION | QTY. | REF. NO. | PART NUMBER | DESCRIPTION | QTY. |
|----------|-------------|-------------------------|------|----------|-------------|-----------------------------------|------|
| 1 | 79203124 | Light Assembly Left | 1 | 6 | 030-16041 | Carriage Bolt 5/16-18 x 3/4 Gr. 5 | 6 |
| 2 | 79203125 | Light Assembly Right | 1 | 7 | 79203129 | Wire Holder | 1 |
| 3 | 400-11027 | Bracket | 1 | 8 | 951-005-036 | Mac Lock Nut 5/16-18 | 6 |
| 4 | 38809035 | Lighting Harness | 1 | 9 | 79203128 | Long Light Bar | 1 |
| 5 | 367-001-014 | Cable Tie, Black 8 Inch | 20 | | | | |

SECTION 6

HINIKER 1700 SHREDDER

HYDRAULIC LIFT KIT 18' AND 20'



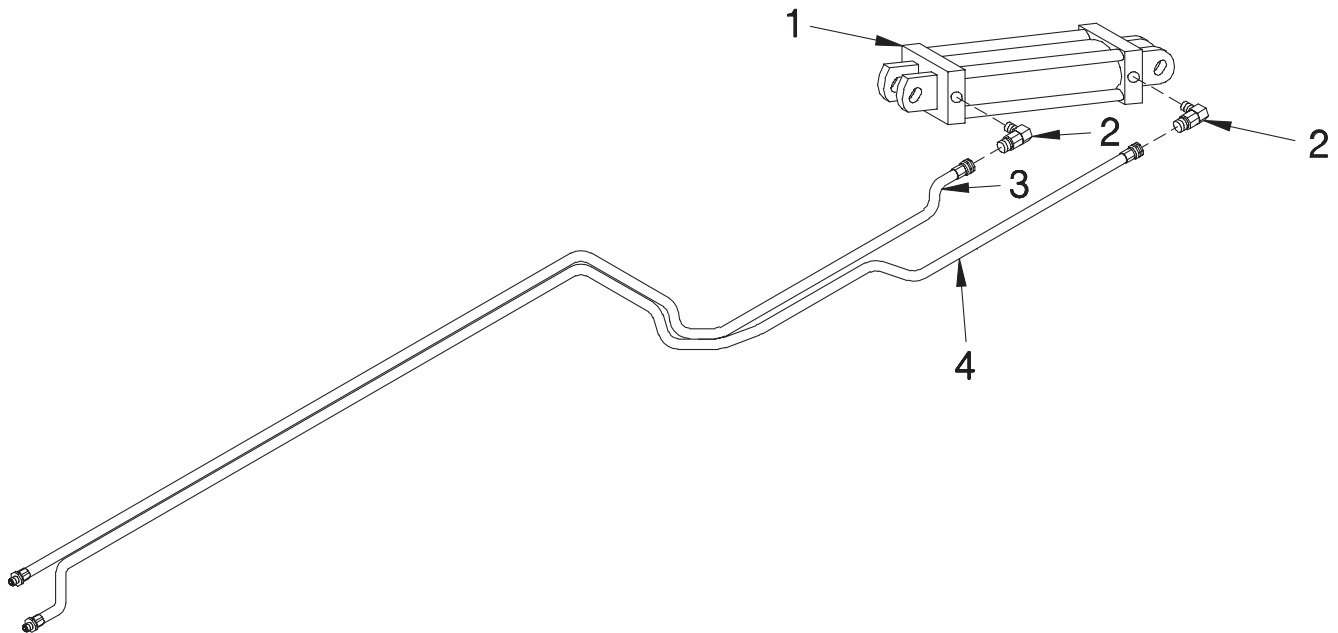
79202349 Hydraulic Lift Kit 18' and 20'

DWG. NO. 5943

| REF. NO. | PART NUMBER | DESCRIPTION | QTY. | REF. NO. | PART NUMBER | DESCRIPTION | QTY. |
|----------|-------------|---|------|----------|-------------|--------------------------------------|------|
| 1 | 79202351 | Hydraulic Cylinder 2 1/2 x 8 (See Sec 6 Pg 9) | 2 | 5 | 957-028-011 | Hose Assembly 3/8 x 150" | 2 |
| 2 | 956-003-001 | Straight Adapter 9/16 M To 3/4 M .297ID | 4 | 6 | 956-008-036 | Connector ISO Male Hydraulic 3/4 ORB | 2 |
| 3 | 957-022-014 | Hose Assembly 1/4 x 126" | 4 | 7 | 921-001-144 | 14" Plastic Cable Tie | 8 |
| 4 | 956-007-023 | Fitting-Tee Bulkhead 9/16 JIC | 2 | | | | |

SEC 6

HYDRAULIC LIFT KIT 15'



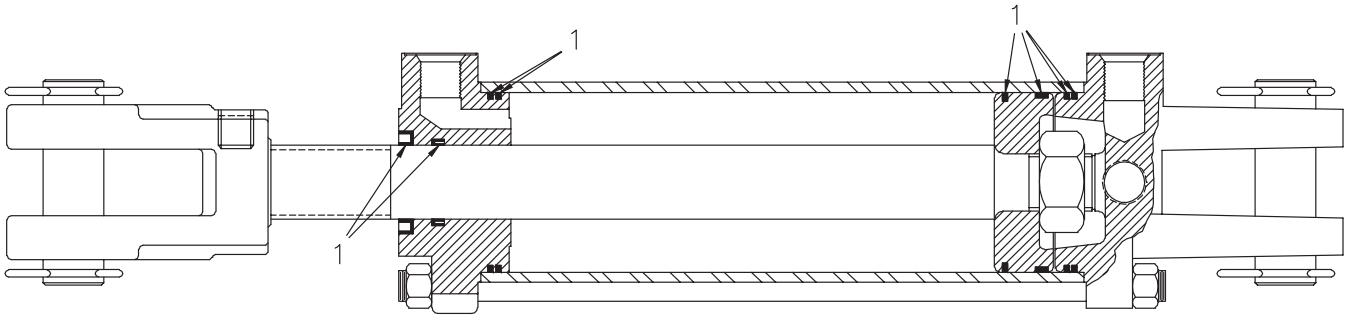
79201616 Hydraulic Cylinder Package

DWG. NO. 6531

| REF. NO. | PART NUMBER | DESCRIPTION | QTY. | REF. NO. | PART NUMBER | DESCRIPTION | QTY. |
|----------|-------------|-------------------------|------|----------|-------------|--------------------------|------|
| 1 | 79202368 | 3 x 8 Cylinder Assembly | 1 | 3 | 957-004-006 | Hose Assembly 3/8 x 156" | 1 |
| 2 | 956-005-001 | 90° Elbow | 2 | 4 | 957-004-007 | Hose Assembly 3/8 x 172" | 1 |

HINIKER 1700 SHREDDER

2 1/2 X 8 CYLINDER

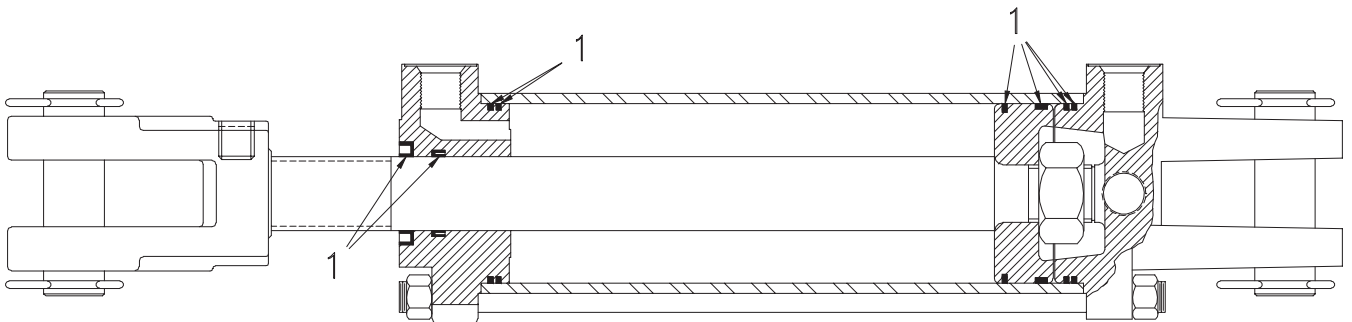


79202351 2 1/2 x 8 Cylinder

DWG. NO. 6567

| REF. NO. | PART NUMBER | DESCRIPTION | QTY. | REF. NO. | PART NUMBER | DESCRIPTION | QTY. |
|----------|-------------|-------------|------|----------|-------------|-------------|------|
| 1 | 79202366 | Seal Kit | 1 | | | | |

3 X 8 CYLINDER



79202368 3 x 8 Cylinder

DWG. NO. 5949

| REF. NO. | PART NUMBER | DESCRIPTION | QTY. | REF. NO. | PART NUMBER | DESCRIPTION | QTY. |
|----------|-------------|-------------|------|----------|-------------|-------------|------|
| 1 | 79202380 | Seal Kit | 1 | | | | |