

HINIKER PNEUMATIC SEED APPLICATOR PARTS BOOK

FOR MODEL NUMBERS 7020, 7030, 7040, 7055
MODEL YEAR 2016 - 2019

- SECTION 1 HOPPER ASSEMBLY COMPONENTS
(MODELS 7020, 7030, 7040, 7055)
- SECTION 2 DRIVE ASSEMBLY OPTIONS
- SECTION 3 MOUNTING OPTIONS
- SECTION 4 HOPPER ACCESSORIES

PARTS

It is the policy of Hiniker Company to constantly improve its products whenever it is practical to do so.

Hiniker Company must therefore reserve the right to redesign or change its equipment or component parts thereof without incurring the obligation to install or furnish such changes on the equipment previously delivered.

HINIKER COMPANY
58766 240th St.
P.O. BOX 3407
MANKATO, MN 56002-3407 USA
Phone: (800) 433-5620
Fax: (800) 637-3991
E-Mail: hiniker@hiniker.com

INSTRUCTIONS FOR ORDERING PARTS

1. The reference numbers (Ref. No.) in the illustrations correspond to the same reference numbers (Ref. No.) in the description list. An assembly having a part number can be ordered. All other parts must be ordered individually. The quantity in the "Qty." column is the number of parts used in this area of the machine. The term "A/R" for number required indicates "as required" where the quantity may vary. Order all parts by their part number and description. Do not use the reference number (Ref. No.).
2. All references to left and right, front and rear apply to the machine as viewed from the rear of the machine, facing forward in the direction of travel.
3. Always mention the identification number of the model and serial numbers found on the name plate of the unit on which the part is to be used. Much delay and confusion can be avoided when correct numbers are specified on parts order and correspondence.

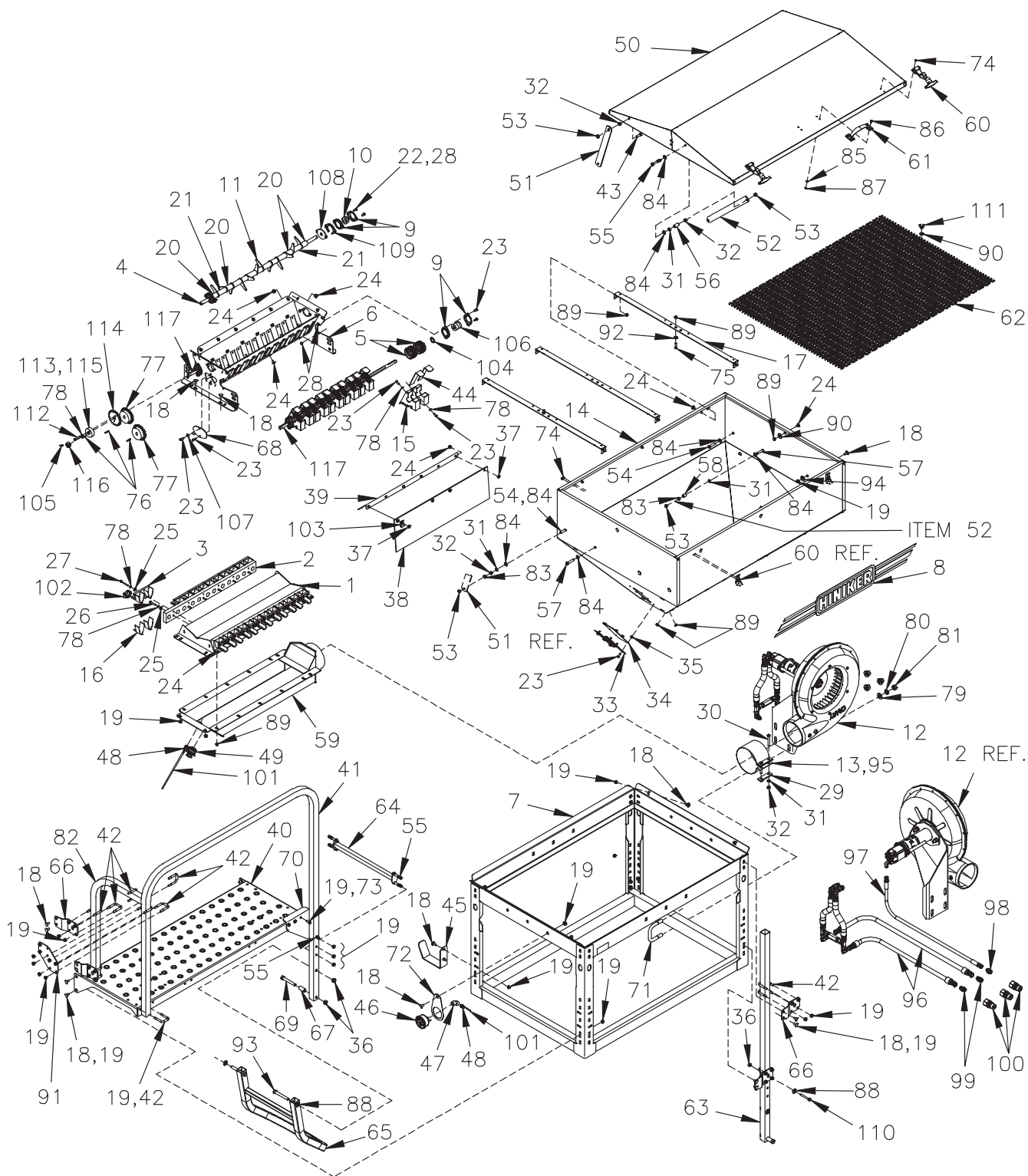
SECTION 1 HOPPER ASSEMBLY COMPONENTS

MODELS:
7020, 7030, 7040, 7055

PAGE 2-3	MODEL 7020 - 20 CU. FT. HOPPER ASSEMBLY
PAGE 4-5	MODEL 7030 - 30 CU. FT. HOPPER ASSEMBLY
PAGE 6-7	MODEL 7040/7055 - 40 & 55 CU. FT. HOPPER ASSEMBLY

HOPPER ASSEMBLY COMPONENTS

20 CU. FT. HOPPER ASSEMBLY



DWG. NO. 7539

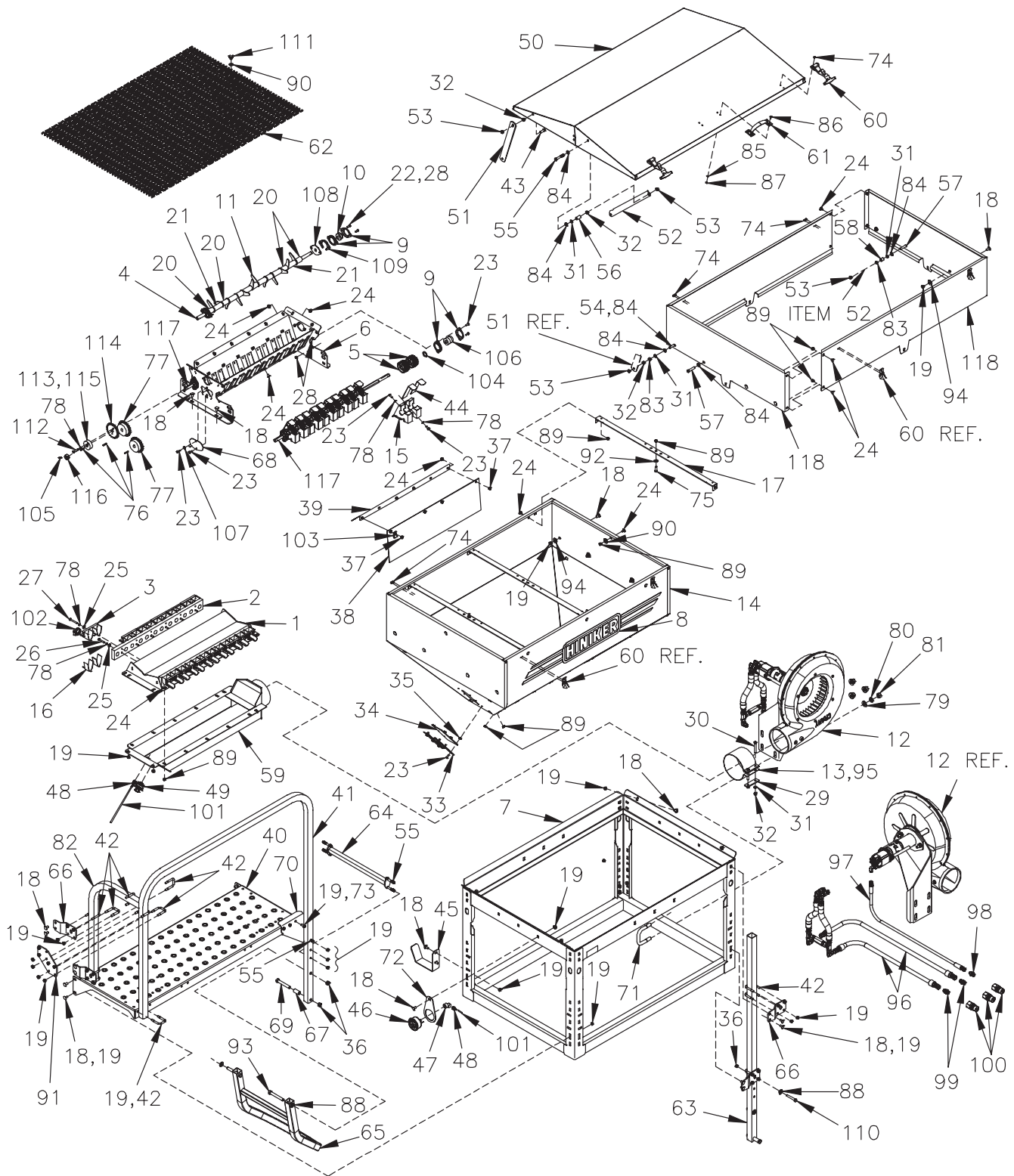
HOPPER ASSEMBLY COMPONENTS

S E C T I O N 1

REF. NO.	PART NUMBER	DESCRIPTION	QTY.	REF. NO.	PART NUMBER	DESCRIPTION	QTY.
1	81006943	Air Manifold Top Weldment	1	59	81006963	Air Chamber Weldment	1
2	81006944	Venturi Block	2	60	79204183	Rubber Latch Assembly	2
3	81007018	Seed Tube Anchor Assembly SS	12	61	81006964	Handle	1
4	81006945	Drive Shaft	1	62	81006965	Hopper Grid	1
5	80302327	Black Metering Wheel	24	63	81006966	Tube	1
	80305772	Gray Metering Wheel	24	64	81005090	Step Weldment	1
6	81006946	Seed Metering Weldment	1	65	81005095	Bottom Step Weldment	1
7	81006947	Frame Weldment	1	66	81006967	Offset Mounting Bracket	4
8	79204094	Decal Hiniker	2	67	81006968	Spacer Bushing	2
9	80302057	Flangette, Painted	12	68	81007000	End Cap	2
10	60303057	Bearing 5/8	2	69	950-001-142	Hex Head Cap Screw 1/2-13 x 3 1/2 Gr. 5	2
11	81006948	Fert Agitator Plate	12	70	81006969	Ladder Mount Bracket	1
12	81006949	Hydraulic Fan Assembly	1	71	81006970	U-Bolt 5/8-11 3 5/8 x 3 1/4	2
13	81005721	6" Dia. Band	1	72	81006971	Pressure Gauge Mount Bracket	1
14	81006950	Hopper Assembly 20 Cu. Ft.	1	73	950-001-089	Hex Head Cap Screw 3/8-16 x 3/4 Gr. 5	3
15	81006951	Support Assembly SS	12	74	954-002-009	Pop Rivet 3/16 x 1/8 Stainless OEDH	12
16	81007017	Hose Anchor SS	24	75	950-001-110	Hex Head Cap Screw 5/16-18 x 1 Gr. 5	2
17	81007007	Cross Brace	3	76	702-53002	Key 3/16 x 1"	3
18	950-003-054	Carriage Bolt 3/8-16 x 3/4 G5 Short Shank	30	77	81006973	Sprocket 40B21	2
19	951-002-003	Nut Flanged Whiz Lock 3/8-16	64	78	952-001-001	Lock Washer 1/4 Med Split SAE	49
20	81005118	Spacer 1 3/4	7	79	952-003-003	Flat Washer 5/8 SAE	4
21	81006953	Spacer 2 1/2	6	80	952-001-005	Lock Washer 5/8 Med Split SAE	4
22	031-06006	Hex Head Cap Screw 1/4-20 x 1 Gr. 5	4	81	951-001-008	Hex Nut 5/8-11	4
23	950-001-233	Hex Head Cap Screw 1/4-20 x 5/8 Gr. 5	48	82	81007078	Guardrail End	1
24	950-003-002	Carriage Bolt 5/16-18 x 1/2 G5 Short Shank	42	83	034-05117	Hex Jam Nut 3/8	4
25	952-002-011	Flat Washer 1/4 Inch Wrt	24	84	952-003-006	Flat Washer 3/8 SAE	13
26	950-001-234	Hex Head Cap Screw 1/4-20 x 1 1/2 Gr. 5	12	85	033-02004	Flat Washer 3/16 Inch Standard	4
27	031-06010	Hex Head Cap Screw 1/4-20 x 2 Gr. 5	12	86	950-002-002	Hex Head Flanged Whiz Lock Bolt #10-24 x 1/2	4
28	951-005-089	Lock Nut 1/4-20 2-Way	12	87	392-010-010	Lock Nut 10-24 Nylon Insert	4
29	81005717	Mount Plate	2	88	952-003-004	Flat Washer 1/2 Sae	3
30	031-06111	Hex Head Cap Screw 3/8-16 x 2 1/2 Gr. 5	2	89	951-002-002	Nut 5/16-18 Flanged Whiz Lock	36
31	952-001-007	Lock Washer 3/8 Med Split SAE	8	90	952-002-003	Flat Washer 3/8 Wrt	4
32	951-001-005	Hex Nut 3/8-16	8	91	81007079	Guardrail Mount Bracket	1
33	80302193	Window Bracket	4	92	952-002-002	Flat Washer 5/16 Wrt	2
34	80302194	Window Glass	2	93	031-06214	Hex Head Cap Screw 1/2-13 x 3 3/4 Gr. 5	2
35	951-002-001	Nut Flanged Whiz Lock 1/4-20	12	94	952-002-021	Flat Washer 7/16 SS	4
36	10304	Lock Nut 1/2-13	5	95	81005813	Foam Pad	1
37	951-005-036	Lock Nut 5/16-18 Mac	8	96	957-006-020	1/2 x 162 Hose Assembly	2
38	81007083	Debris Shield 20 Cu. Ft.	2	97	957-022-018	1/4 x 162 Hose Assembly	1
39	81007082	Debris Shield Mounting Bracket 20 Cu. Ft.	2	98	956-003-001	Straight Adapter 9/16M To 3/4 Male .297 Id	1
40	81006955	Platform	1	99	956-003-006	Straight Adapter 3/4-16 37° x 3/4 ORB	2
41	81006987	Guardrail Weldment 20/30 Cu. Ft.	1	100	956-008-036	Connector ISO Male Hydraulic 3/4 ORB	3
42	81002741	U-Bolt 3/8-16 x 1 1/2 x 1 1/4	13	101	921-001-342	Hose 5/32 Vacuum Tubing	3 FT
43	950-001-105	Hex Head Cap Screw 3/8-16 x 1 Gr. 5	2	102	601638	Hose Clamp 1 1/2	24
44	81006957	Metering Slide SS	24	103	720-02399	Cable Clamp 3/8	1
45	81006958	Hose Routing Bracket	1	104	952-004-049	Machine Bushing 1 x 5/8 x 18 Ga.	4
46	80305047	Pressure Gauge	1	105	953-003-038	Spring Pin 3/16 x 7/8	1
47	625-001-821	Fitting PVC Sch 80 Elbow 1/4 Thread 45°	1	106	80302171	Bearing	4
48	958-005-010	Adapter 1/4 NPT 3/16 Hose Barb	2	107	952-003-010	Flat Washer 1/4 Inch SAE	2
49	80302112	1 7/8 Dia. Exp Rubber Plug	1	108	81006397	Poly Seal	2
50	81006959	Cover Assembly 20 Cu. Ft.	1	109	81006396	Poly Spacer	2
51	80302043	Strap	2	110	950-001-159	Hex Head Cap Screw 1/2-13 x 2 1/2 Gr. 5	1
52	81006960	Cover Control Lever	2	111	951-005-102	Wing Nut 5/16-18 SS	2
53	951-005-003	Hex Lock Nut 3/8-16	8	112	031-06007	Hex Head Cap Screw 1/4-20 x 1 1/4 Gr. 5	1
54	950-001-108	Hex Head Cap Screw 3/8-16 x 1 1/2 Gr. 5	2	113	950-008-015	Socket Head Set Screw 1/4-20 x 1/4 Knurled Cup	2
55	031-06110	Hex Head Cap Screw 3/8-16 x 2 1/4 Gr. 5	8	114	81007025	Sprocket 40A21	1
56	81006961	Spacer Bushing	2	115	81007022	Shear Hub	1
57	950-001-092	Hex Head Cap Screw 3/8-16 x 1 3/4 Gr. 5	2	116	81007021	Shaft Nut 5/8	1
58	81006962	Spacer Bushing	2	117	81007419	Drive Shaft 7020/7030	2

HOPPER ASSEMBLY COMPONENTS

30 CU. FT. HOPPER ASSEMBLY



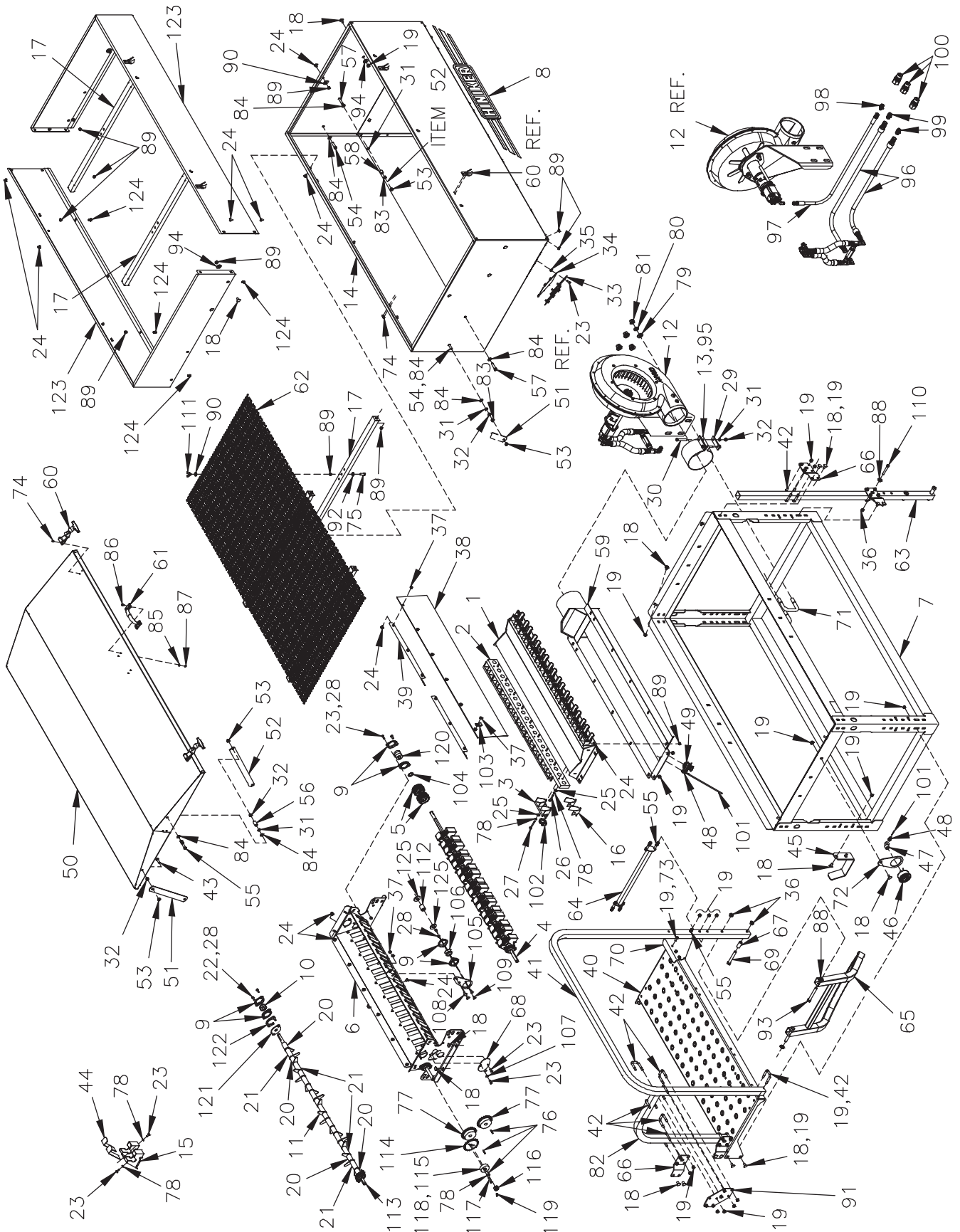
HOPPER ASSEMBLY COMPONENTS

SECTION 1

REF. NO.	PART NUMBER	DESCRIPTION	QTY.	REF. NO.	PART NUMBER	DESCRIPTION	QTY.
1	81006943	Air Manifold Top Weldment	1	60	79204183	Rubber Latch Assembly	2
2	81006944	Venturi Block	2	61	81006964	Handle	1
3	81007018	Seed Tube Anchor Assembly SS	12	62	81006965	Hopper Grid	1
4	81006945	Drive Shaft	1	63	81006966	Tube	1
5	80302327	Black Metering Wheel	24	64	81005090	Step Weldment	1
	80305772	Gray Metering Wheel	24	65	81005095	Bottom Step Weldment	1
6	81006946	Seed Metering Weldment	1	66	81006967	Offset Mounting Bracket	4
7	81006947	Frame Weldment	1	67	81006968	Spacer Bushing	2
8	79204094	Decal Hiniker	2	68	81007000	End Cap	2
9	80302057	Flangette, Painted	12	69	950-001-142	Hex Head Cap Screw 1/2-13 x 3 1/2 Gr. 5	2
10	60303057	Bearing 5/8	2	70	81006969	Ladder Mount Bracket	1
11	81006948	Fert Agitator Plate	12	71	81006970	U-Bolt 5/8-11 3 5/8 x 3 1/4	2
12	81006949	Hydraulic Fan Assembly	1	72	81006971	Pressure Gauge Mount Bracket	1
13	81005721	6" Dia. Band	1	73	950-001-089	Hex Head Cap Screw 3/8-16 x 3/4 Gr. 5	3
14	81006950	Hopper Assembly 20 Cu. Ft.	1	74	954-002-009	Pop Rivet 3/16 x 1/8 Stainless OEDH	20
15	81006951	Support Assembly SS	12	75	950-001-110	Hex Head Cap Screw 5/16-18 x 1 Gr. 5	2
16	81007017	Hose Anchor SS	24	76	702-53002	Key 3/16 x 1"	3
17	81007007	Cross Brace	3	77	81006973	Sprocket 40B21	2
18	950-003-054	Carriage Bolt 3/8-16 x 3/4 G5 Short Shank	38	78	952-001-001	Lock Washer 1/4 Med Split SAE	49
19	951-002-003	Nut Flanged Whiz Lock 3/8-16	73	79	952-003-003	Flat Washer 5/8 SAE	4
20	81005118	Spacer 1 3/4	7	80	952-001-005	Lock Washer 5/8 Med Split SAE	4
21	81006953	Spacer 2 1/2	6	81	951-001-008	Hex Nut 5/8-11	4
22	031-06006	Hex Head Cap Screw 1/4-20 x 1 Gr. 5	4	82	81007078	Guardrail End	1
23	950-001-233	Hex Head Cap Screw 1/4-20 x 5/8 Gr. 5	48	83	034-05117	Hex Jam Nut 3/8	4
24	950-003-002	Carriage Bolt 5/16-18 x 1/2 G5 Short Shank	46	84	952-003-006	Flat Washer 3/8 SAE	13
25	952-002-011	Flat Washer 1/4 Inch Wrt	24	85	033-02004	Flat Washer 3/16 Inch Standard	4
26	950-001-234	Hex Head Cap Screw 1/4-20 x 1 1/2 Gr. 5	12	86	950-002-002	Hex Head Flanged Whiz Lock Bolt #10-24 x 1/2	4
27	031-06010	Hex Head Cap Screw 1/4-20 x 2 Gr. 5	12	87	392-010-010	Lock Nut 10-24 Nylon Insert	4
28	951-005-089	Lock Nut 1/4-20 2-Way	12	88	952-003-004	Flat Washer 1/2 Sae	3
29	81005717	Mount Plate	2	89	951-002-002	Nut 5/16-18 Flanged Whiz Lock	40
30	031-06111	Hex Head Cap Screw 3/8-16 x 2 1/2 Gr. 5	2	90	952-002-003	Flat Washer 3/8 Wrt	4
31	952-001-007	Lock Washer 3/8 Med Split SAE	8	91	81007079	Guardrail Mount Bracket	1
32	951-001-005	Hex Nut 3/8-16	8	92	952-002-002	Flat Washer 5/16 Wrt	2
33	80302193	Window Bracket	4	93	031-06214	Hex Head Cap Screw 1/2-13 x 3 3/4 Gr. 5	2
34	80302194	Window Glass	2	94	952-002-021	Flat Washer 7/16 SS	12
35	951-002-001	Nut Flanged Whiz Lock 1/4-20	12	95	81005813	Foam Pad	1
36	10304	Lock Nut 1/2-13	5	96	957-006-020	1/2 x 162 Hose Assembly	2
37	951-005-036	Lock Nut 5/16-18 Mac	8	97	957-022-018	1/4 x 162 Hose Assembly	1
38	81007083	Debris Shield 20 Cu. Ft.	2	98	956-003-001	Straight Adapter 9/16M To 3/4 Male .297 Id	1
39	81007082	Debris Shield Mounting Bracket 20 Cu. Ft.	2	99	956-003-006	Straight Adapter 3/4-16 37° x 3/4 ORB	2
40	81006955	Platform	1	100	956-008-036	Connector ISO Male Hydraulic 3/4 ORB	3
41	81006987	Guardrail Weldment 20/30 Cu. Ft.	1	101	921-001-342	Hose 5/32 Vacuum Tubing	3 FT
42	81002741	U-Bolt 3/8-16 x 1 1/2 x 2 1/4	13	102	601638	Hose Clamp 1 1/2	24
43	950-001-105	Hex Head Cap Screw 3/8-16 x 1 Gr. 5	2	103	720-02399	Cable Clamp 3/8	1
44	81006957	Metering Slide SS	24	104	952-004-049	Machine Bushing 1 x 5/8 x 18 Ga.	4
45	81006958	Hose Routing Bracket	1	105	953-003-038	Spring Pin 3/16 x 7/8	1
46	80305047	Pressure Gauge	1	106	80302171	Bearing	4
47	625-001-821	Fitting PVC Sch 80 Elbow 1/4 Thread 45°	1	107	952-003-010	Flat Washer 1/4 Inch SAE	2
48	958-005-010	Adapter 1/4 NPT 3/16 Hose Barb	2	108	81006397	Poly Seal	2
49	80302112	1 7/8 Diameter Exp Rubber Plug	1	109	81006396	Poly Spacer	2
50	81006959	Cover Assembly 20 Cu. Ft.	1	110	950-001-159	Hex Head Cap Screw 1/2-13 x 2 1/2 Gr. 5	1
51	80302043	Strap	2	111	951-005-102	Wing Nut 5/16-18 SS	2
52	81006960	Cover Control Lever	2	112	031-06007	Hex Head Cap Screw 1/4-20 x 1 1/4 Gr. 5	1
53	951-005-003	Hex Lock Nut 3/8-16	8	113	950-008-015	Socket Head Set Screw 1/4-20 x 1/4 Knurled Cup	2
54	950-001-108	Hex Head Cap Screw 3/8-16 x 1 1/2 Gr. 5	2	114	81007025	Sprocket 40A21	1
55	031-06110	Hex Head Cap Screw 3/8-16 x 2 1/4 Gr. 5	8	115	81007022	Shear Hub	1
56	81006961	Spacer Bushing	2	116	81007021	Shaft Nut 5/8	1
57	950-001-092	Hex Head Cap Screw 3/8-16 x 1 3/4 Gr. 5	2	117	81007419	Drive Shaft 7020/7030	2
58	81006962	Spacer Bushing	2	118	81006938	Extension Panel	2
59	81006963	Air Chamber Weldment	1				

HOPPER ASSEMBLY COMPONENTS

7040 - 40 CU. FT. HOPPER ASSEMBLY
7055 - 55 CU. FT. HOPPER ASSEMBLY



DWG. NO. 7552

HOPPER ASSEMBLY COMPONENTS

SECTION 1

REF. NO.	PART NUMBER	DESCRIPTION	QTY.	REF. NO.	PART NUMBER	DESCRIPTION	QTY.
1	81007002	Air Manifold Top Weldment	1	63	81006966	Tube	1
2	81007003	Venturi Block	2	64	81005090	Step Weldment	1
3	81007018	Seed Tube Anchor Assembly SS	18	65	81005095	Bottom Step Weldment	1
4	81007004	Hex Metering Shaft, 40 Cu. Ft.	2	66	81006967	Offset Mounting Bracket	4
5	80302327	Black Metering Wheel	36	67	81006968	Spacer Bushing	2
	80305772	Gray Metering Wheel	36	68	81007000	End Cap	2
6	81007010	Seed Metering Weld	1	69	950-001-142	Hex Head Cap Screw 1/2-13 x 3 1/2 Gr. 5	2
7	81007005	Frame Weld	1	70	81006969	Ladder Mount Bracket	1
8	79204094	Decal Hiniker	2	71	81006970	U-Bolt 5/8-11 3 5/8 x 3 1/4	2
9	80302057	Flangette, Painted	16	72	81006971	Pressure Gauge Mount Bracket	1
10	60303057	Bearing 5/8	2	73	950-001-089	Hex Head Cap Screw 3/8-16 x 3/4 Gr. 5	3
11	81006948	Fert Agitator Plate	18	74	954-002-009	Pop Rivet 3/16 x 1/8 Stainless Oedh	12
12	81006949	Hydraulic Fan Assembly	1	75	950-001-110	Hex Head Cap Screw 5/16-18 x 1 Gr. 5	2
13	81005721	6" Dia. Band	1	76	702-53002	Key 3/16 x 1	3
14	81007006	Hopper Assembly 40 Cu. Ft.	1	77	81006973	Sprocket 40B21	2
15	81006951	Support Assembly SS	18	78	952-001-001	Lock Washer 1/4 Med Split SAE	73
16	81007017	Hose Anchor SS	36	79	952-003-003	Flat Washer 5/8 Inch SAE	4
17	81007007	Cross Brace 40 Cu. Ft.	A/R	80	952-001-005	Lock Washer 5/8 Inch Med Split SAE	4
18	950-003-054	Carriage Bolt 3/8-16 x 3/4 G5 Short Shank	A/R	81	951-001-008	Hex Nut 5/8-11	4
19	951-002-003	Nut Flanged Whiz Lock 3/8-16	A/R	82	81007078	Guardrail End	1
20	81005118	Spacer 1 3/4	10	83	034-05117	Hex Jam Nut 3/8	4
21	81006953	Spacer 2 1/2	9	84	952-003-006	Flat Washer 3/8 SAE	13
22	031-06006	Hex Head Cap Screw 1/4-20 x 1 Gr. 5	4	85	033-02004	Flat Washer 3/16 Inch Standard	4
23	950-001-233	Hex Head Cap Screw 1/4-20 x 5/8 Gr. 5	60	86	950-002-002	Hex Head Flanged Whiz Lock Bolt #10-24 x 1/2	4
24	950-003-002	Carriage Bolt 5/16-18 X 1/2 G5 Short Shank	A/R	87	392-010-010	Lock Nut 10-24 Nylon Insert	4
25	952-002-011	Flat Washer 1/4 Wrt	36	88	952-003-004	Flat Washer 1/2 SAE	3
26	950-001-234	Hex Head Cap Screw 1/4-20 x 1 1/2 Gr. 5	18	89	951-002-002	Nut 5/16-18 Flanged Whiz Lock	A/R
27	031-06010	Hex Head Cap Screw 1/4-20 x 2 Gr. 5	18	90	952-002-003	Flat Washer 3/8 Inch Wrt	4
28	951-005-089	Lock Nut 1/4-20 2-Way	16	91	81007079	Guardrail Mount Bracket	1
29	81005717	Mount Plate	2	92	952-002-002	Flat Washer 5/16 Inch Wrt	2
30	031-06111	Hex Head Cap Screw 3/8-16 x 2 1/2 Gr. 5	2	93	031-06214	Hex Head Cap Screw 1/2-13 x 3 3/4 Gr. 5	2
31	952-001-007	Lock Washer 3/8 Inch Med Split SAE	8	94	952-002-021	Flat Washer 7/16 SS	A/R
32	951-001-005	Hex Nut 3/8-16	8	95	81005813	Foam Pad	1
33	80302193	Window Bracket	4	96	957-006-020	1/2 x 162 Hose Assembly	2
34	80302194	Window Glass	2	97	957-022-018	1/4 x 162 Hose Assembly	1
35	951-002-001	Nut Flanged Whiz Lock 1/4-20	12	98	956-003-001	Straight Adapter 9/16M To 3/4 Male .297 Id	1
36	10304	Lock Nut 1/2-13	5	99	956-003-006	Straight Adapter 3/4-16 37° x 3/4 ORB	2
37	951-005-036	Lock Nut 5/16-18 Mac Lock	16	100	956-008-036	Connector ISO Male Hydraulic 3/4 ORB	3
38	81007081	Debris Shield 40 Cu. Ft.	2	101	921-001-342	Hose 5/32 Vacuum Tubing	3 FT
39	81007080	Debris Shield Mount Bracket 40 Cu. Ft.	4	102	601638	Hose Clamp 1 1/2	36
40	81007008	Platform	1	103	720-02399	Cable Clamp 3/8	1
41	81007032	Guardrail Weld 40 Cu. Ft.	1	104	952-004-049	Machine Bushing 1 x 5/8 x 18 Ga.	4
42	81002741	U-Bolt 3/8-16 x 1 1/2 x 2 1/4	13	105	81007015	Bearing Support	2
43	950-001-105	Hex Head Cap Screw 3/8-16 x 1 Gr. 5	2	106	80305229	Bearing Short	2
44	81006957	Metering Slide SS	36	107	952-003-010	Flat Washer 1/4 SAE	2
45	81006958	Hose Routing Bracket	1	108	950-003-060	Carriage Bolt 5/16-18 x 5/8 Gr. 5	4
46	80305047	Pressure Gauge	1	109	950-003-065	Carriage Bolt 1/4-20 x 5/8 Gr. 5	4
47	625-001-821	Fitting PVC Sch 80 Elbow 1/4 Thread 45°	1	110	950-001-159	Hex Head Cap Screw 1/2-13 x 2 1/2 Gr. 5	1
48	958-005-010	Adapter 1/4 NPT 3/16 Hose Barb	2	111	951-005-102	Wing Nut 5/16-18 SS	2
49	80302112	1 7/8 Dia. Exp Rubber Plug	1	112	81007426	Hex Bushing, Plated	2
50	81007011	Cover Assembly 40 Cu. Ft.	1	113	81007034	Hex Shaft Agitator 40 Cu. Ft.	1
51	80302043	Strap	2	114	81007025	Sprocket 40A21	1
52	81006960	Cover Control Lever	2	115	81007022	Shear Hub	1
53	951-005-003	Hex Lock Nut 3/8-16	8	116	81007021	Shaft Nut 5/8	1
54	950-001-108	Hex Head Cap Screw 3/8-16 x 1 1/2 Gr. 5	2	117	031-06007	Hex Head Cap Screw 1/4-20 x 1 1/4 Gr. 5	1
55	031-06110	Hex Head Cap Screw 3/8-16 x 2 1/4 Gr. 5	8	118	950-008-015	Socket Head Set Screw 1/4-20 x 1/4 Knurled Cup	2
56	81006961	Spacer Bushing	2	119	953-003-038	Slotted Spring Pin 3/16 x 7/8	1
57	950-001-092	Hex Head Cap Screw 3/8-16 x 1 3/4 Gr. 5	2	120	80302171	Bearing	4
58	81006962	Spacer Bushing	2	121	81006397	Poly Seal	2
59	81007012	Air Chamber Weldment	1	122	81006396	Poly Spacer	2
60	79204183	Rubber Latch Assembly	2	123	81007405	15 Cu. Ft. Extension	A/R
61	81006964	Handle	1	124	031-06051	Hex Head Cap Screw 5/16-18 x 1/2 Gr. 5	A/R
62	81007013	Hopper Grid	1	125	81007420	Hex Washer	4

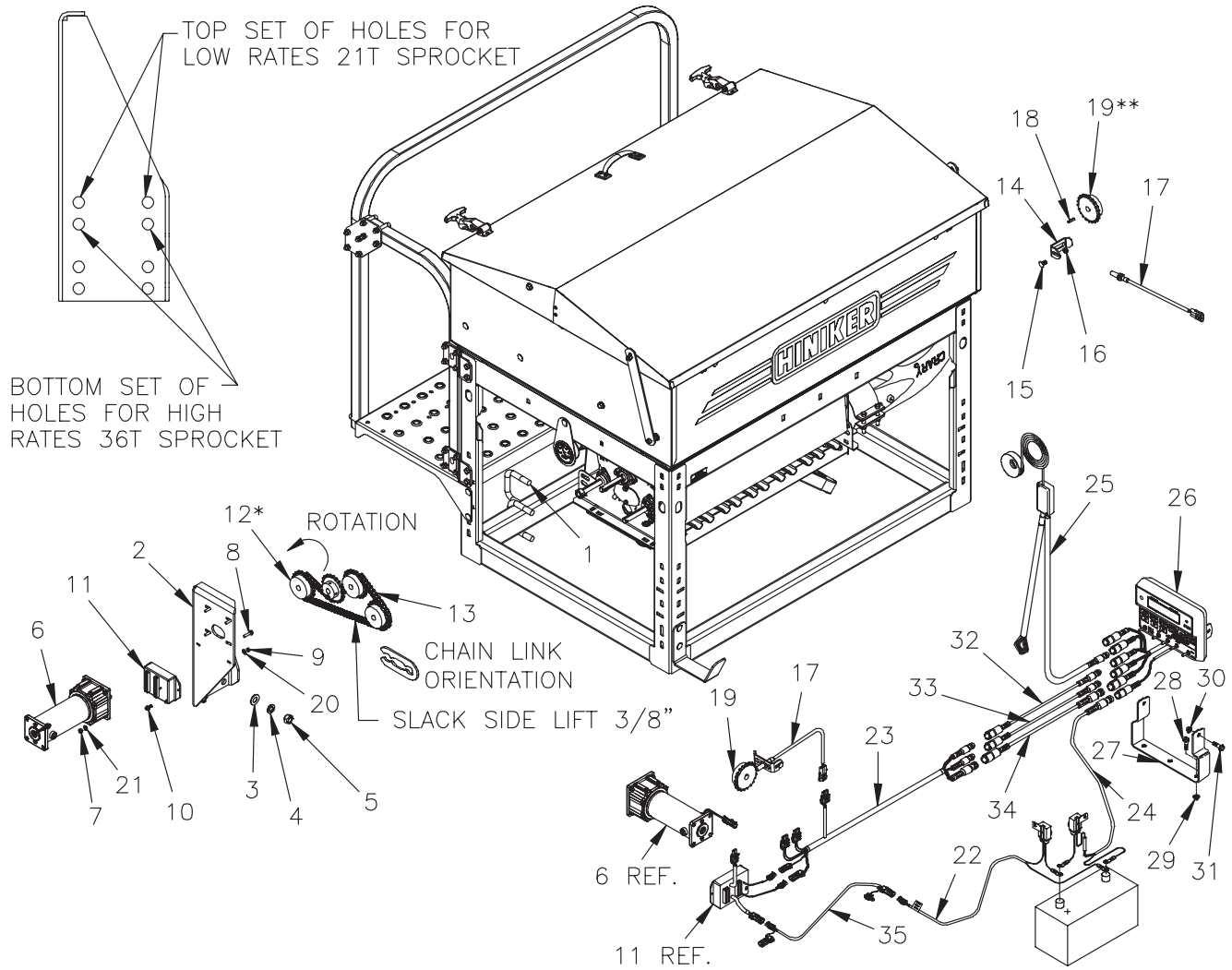
SECTION 2 DRIVE ASSEMBLY OPTIONS

PAGE 2	ELECTRIC DRIVE WITH CONSOLE
PAGE 3	ELECTRIC TRANSMISSION DRIVE WITH CONSOLE
PAGE 4	ELECTRIC TRANSMISSION DRIVE WITHOUT CONSOLE
PAGE 5	HYDRAULIC DRIVE
PAGE 6	ELECTRIC CLUTCH OPTION

DRIVE ASSEMBLY OPTIONS

ELECTRIC DRIVE WITH CONSOLE

SEC 2

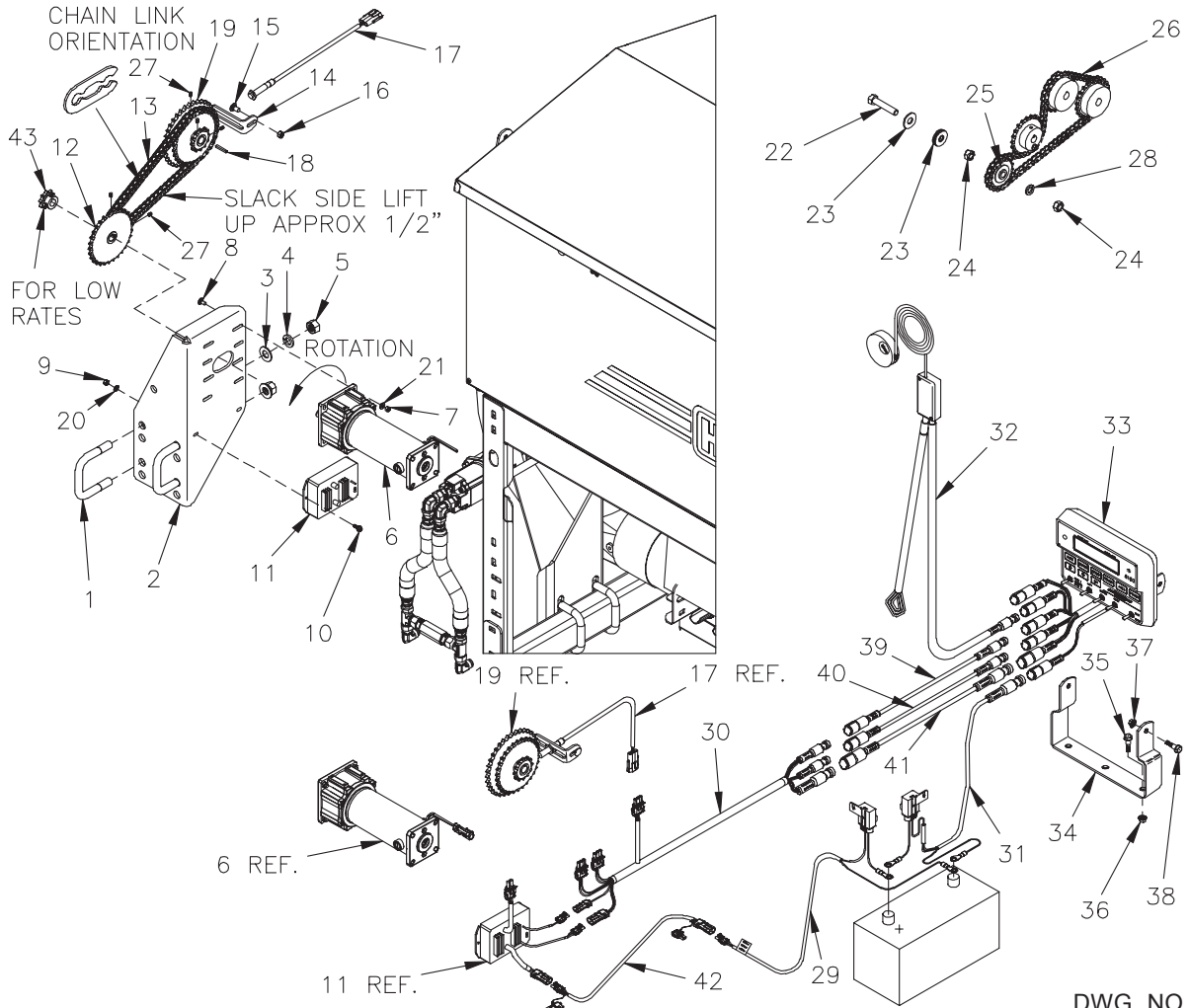


DWG. NO. 7551

REF. NO.	PART NUMBER	DESCRIPTION	QTY.	REF. NO.	PART NUMBER	DESCRIPTION	QTY.
1	81006970	U-Bolt 5/8-11 3 5/8 x 3 1/4	2	20	952-002-001	Flat Washer #10 Wrt	2
2	81007119	Mount Bracket Electric Motor	1	21	952-003-010	Flat Washer 1/4	4
3	952-003-003	Flat Washer 5/8 SAE	4	22	38819002	Power Cable Cover Crop	1
4	952-001-005	Lock Washer 5/8 Inch Med Split SAE	4	23	38819001	Harness 8160 Cover Crop	1
5	951-001-008	Hex Nut 5/8-11	4	24	388-003-042	15' 3 Conductor 20A Power Cable	1
6	81007114	Drive Motor Assembly	1	25	8614	GPS1 Speed Sensor	1
7	951-005-089	Lock Nut 1/4-20 2-Way	4	26	36015005	8160 Console Assembly	1
8	030-12020	Carriage Bolt 1/4-20 x 1	4	27	365-004-004	Console Mount Bracket 8150/8100	1
9	392-010-010	Lock Nut 10-24 Nylon Insert	2	28	950-002-006	Hex Head Flange Whiz Lock Bolt 5/16-18 x 3/4	2
10	950-002-015	Hex Flanged Head Bolt #10-24 x 3/4	2	29	951-002-002	Flanged Whiz Lock Nut 5/16-18	2
11	81007115	Standard Electric Motor Driver 40 Amp	1	30	951-002-001	Flanged Whiz Lock Nut 1/4-20	2
12	81007118	Sprocket #40B36	A/R	31	950-002-004	Hex Head Flanged Whiz Lock Bolt 1/4-20 x 1	2
	81006973	Sprocket #40B21	A/R	32	388-003-004	10' Flowmeter Extension Cable	A/R
13	81007117	Roller Chain #40 97 Links	1		388-003-008	20' Flowmeter Extension Cable	A/R
14	81007116	Mount Bracket Sensor	1	33	388-003-040	10' Servo Extension Cable	A/R
15	030-16041	Carriage Bolt 5/16-18 x 3/4 Gr. 5	1		388-003-041	20' Servo Extension Cable	A/R
16	951-005-036	Lock Nut 5/16-18 Mac Lock	1	34	38815015	Cable 10' 8160 Boom Ext 7 Cond	A/R
17	38819000	Shaft Speed Sensor Assembly	1		38815016	Cable 20' 8160 Boom Ext 7 Cond	A/R
18	702-53002	Key 3/16 x 1	1	35	38812042	Power Cable Motor Ext Cable 10'	A/R
19	81006973	Sprocket #40B21	A/R				
	81007118	Sprocket #40B36	A/R				

DRIVE ASSEMBLY OPTIONS

ELECTRIC TRANSMISSION DRIVE WITH CONSOLE



DWG. NO. 7555

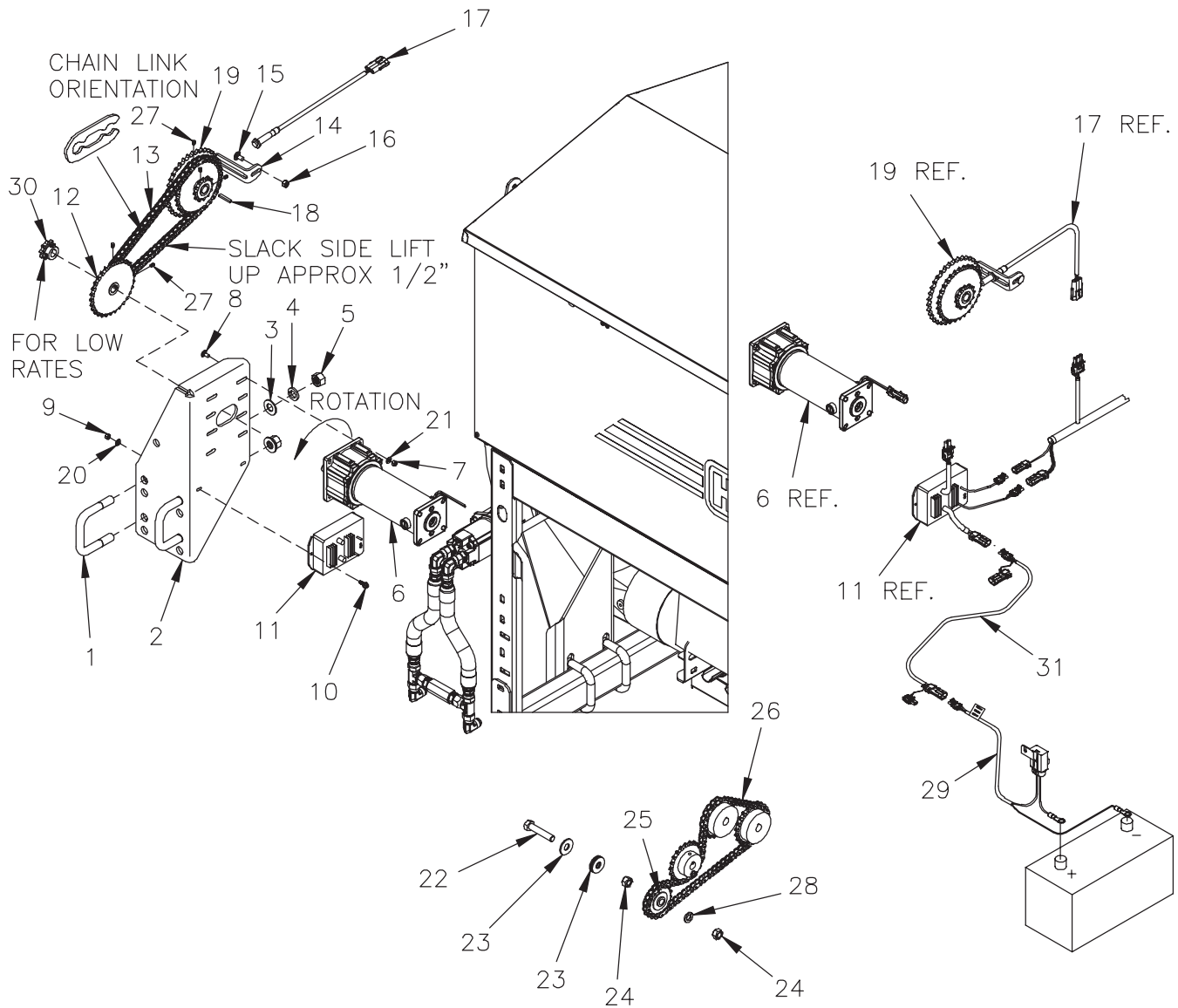
REF. NO.	PART NUMBER	DESCRIPTION	QTY.	REF. NO.	PART NUMBER	DESCRIPTION	QTY.
1	81006970	U-Bolt 5/8-11 3 5/8 x 3 1/4	2	25	81006939	Idler Sprocket #40	1
2	81007119	Mount Bracket Electric Motor	1	26	81006954	Roller Chain #40 71 Links	1
3	952-003-003	Flat Washer 5/8 SAE	4	27	392-010-023	Set Screw #10-32 x 3/16	6
4	952-001-005	Lock Washer 5/8 Inch Med Split SAE	4	28	952-001-004	Lock Washer 1/2 Inch	1
5	951-001-008	Hex Nut 5/8-11	4	29	38819002	Power Cable Cover Crop	1
6	81007114	Drive Motor Assembly	1	30	38819001	Harness 8160 Cover Crop	1
7	951-005-089	Lock Nut 1/4-20 2-Way	4	31	388-003-042	15' 3 Conductor 20A Power Cable	1
8	030-12020	Carriage Bolt 1/4-20 x 1	4	32	8614	GPS1 Speed Sensor	1
9	392-010-010	Lock Nut 10-24 Nylon Insert	2	33	36015005	8160 Console Assembly	1
10	950-002-015	Hex Flanged Head Bolt #10-24 x 3/4	2	34	365-004-004	Console Mount Bracket 8150/8100	1
11	81007115	Std Electric Motor Driver 40 Amp	1	35	950-002-006	Hex Head Flanged Whiz Lock Bolt 5/16-18 x 3/4	2
12	81007346	Sprocket Weldment 12/30	1	36	951-002-002	Flanged Whiz Lock Nut 5/16-18	2
13	81007347	#40 Roller Chain Electric Drive	1	37	951-002-001	Flanged Whiz Lock Nut 1/4-20	2
14	81007116	Mount Bracket Sensor	1	38	950-002-004	Hex Head Flanged Whiz Lock Bolt 1/4-20 x 1	2
15	030-16041	Carriage Bolt 5/16-18 x 3/4 Gr. 5	1	39	388-003-004	10' Flowmeter Extension Cable	A/R
16	951-005-036	Lock Nut 5/16-18 Mac Lock	1	388-003-008	20' Flowmeter Extension Cable	A/R	
17	38819000	Shaft Speed Sensor Assembly	1	40	388-003-040	10' Servo Extension Cable	A/R
18	702-53002	Key 3/16 x 1	1	388-003-041	20' Servo Extension Cable	A/R	
19	81007345	Sprocket Weldment 12/30/36	1	41	38815015	Cable 10' 8160 Boom Ext 7 Cond	A/R
20	952-002-001	Flat Washer #10 Wrt	2	38815016	Cable 20' 8160 Boom Ext 7 Cond	A/R	
21	952-003-010	Flat Washer 1/4 Inch	4	42	38812042	Power Cable Motor Ext Cable 10'	A/R
22	950-001-359	Hex Head Cap Screw 1/2-13 x 2 1/2 Full Thread	1	43	79203302	Sprocket 9 Tooth	1
23	952-002-005	Flat Washer 1/2 Inch	A/R	81006937	Electric Drive Kit With Console		
24	951-001-007	Hex Nut 1/2-13	2				

SECTION 2

DRIVE ASSEMBLY OPTIONS

ELECTRIC TRANSMISSION DRIVE WITHOUT CONSOLE

SEC 2



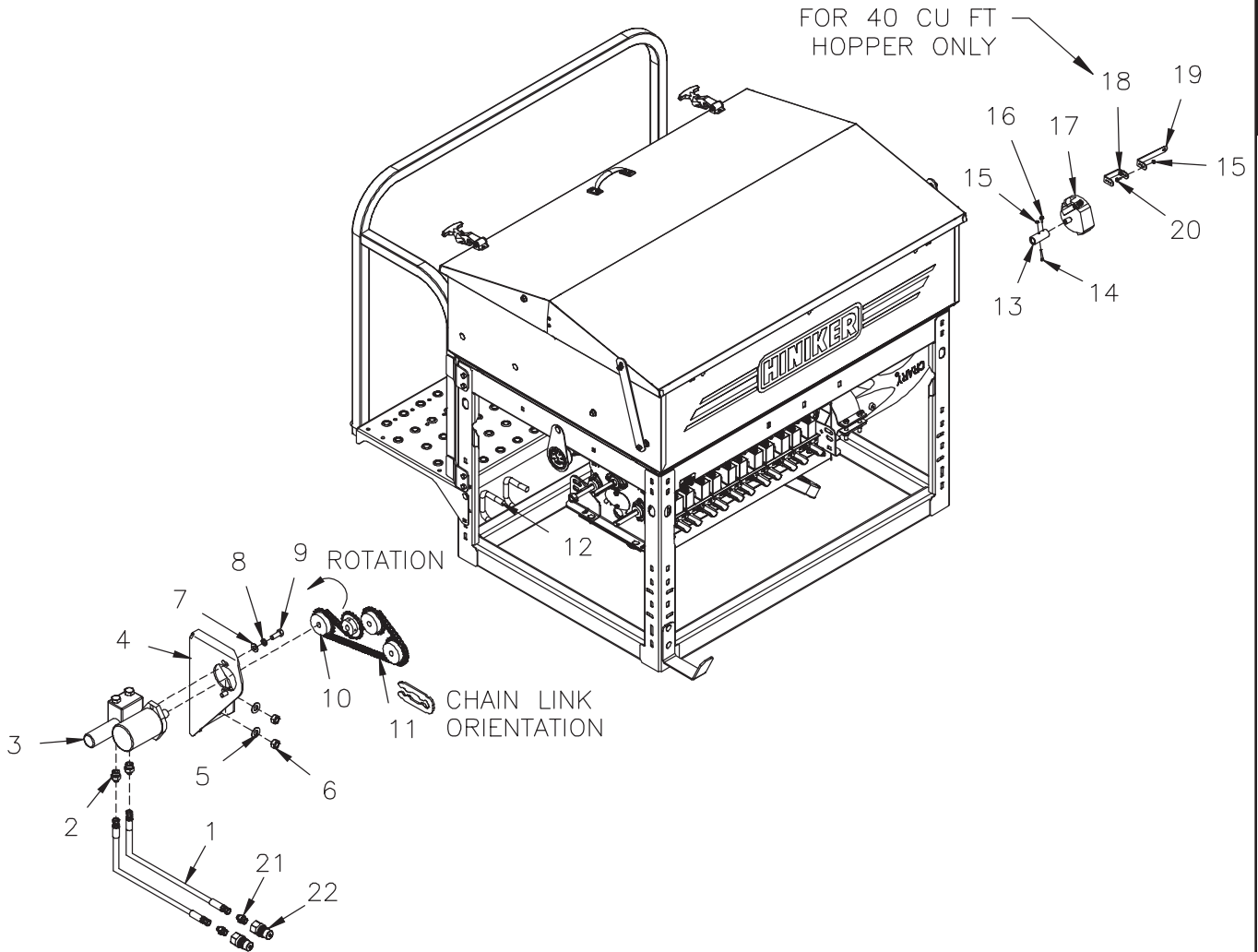
DWG. NO. 7554

REF. NO.	PART NUMBER	DESCRIPTION	QTY.	REF. NO.	PART NUMBER	DESCRIPTION	QTY.
1	81006970	U-Bolt 5/8-11 3 5/8 x 3 1/4	2	17	38819000	Shaft Speed Sensor Assembly	1
2	81007119	Mount Bracket Electric Motor	1	18	702-53002	Key 3/16 x 1	1
3	952-003-003	Flat Washer 5/8 SAE	4	19	81007345	Sprocket Weldment 12/30/36	1
4	952-001-005	Lock Washer 5/8 Inch Med Split SAE	4	20	952-002-001	Flat Washer #10 Wrt	2
5	951-001-008	Hex Nut 5/8-11	4	21	952-003-010	Flat Washer 1/4 Inch	4
6	81007114	Drive Motor Assembly	1	22	950-001-359	Hex Head Cap Screw 1/2-13 x 2 1/2 Full Thread	1
7	951-005-089	Lock Nut 1/4-20 2-Way	4	23	952-002-005	Flat Washer 1/2 Inch	A/R
8	030-12020	Carriage Bolt 1/4-20 x 1	4	24	951-001-007	Hex Nut 1/2-13	2
9	392-010-010	Lock Nut 10-24 Nylon Insert	2	25	81006939	Idler Sprocket #40	1
10	950-002-015	Hex Flanged Head Bolt #10-24 x 3/4	2	26	81006954	Roller Chain #40 71 Links	1
11	81007115	Std Electric Motor Driver 40 Amp	1	27	392-010-023	Set Screw #10-32 x 3/16	6
12	81007346	Sprocket Weldment 12/30	1	28	952-001-004	Lock Washer 1/2 Inch	1
13	81007347	#40 Roller Chain Electric Drive	1	29	38819002	Power Cable Cover Crop	1
14	81007116	Mount Bracket Sensor	1	30	79203302	Sprocket 40B9 5/8 Bore	1
15	030-16041	Carriage Bolt 5/16-18 x 3/4 Gr. 5	1	31	38812042	Power Cable Motor Extension Cable 10'	1
16	951-005-036	Lock Nut 5/16-18 Mac Lock	1		81007111	Electric Drive Kit Without Console	

DRIVE ASSEMBLY OPTIONS

HYDRAULIC DRIVE

SECTION
2



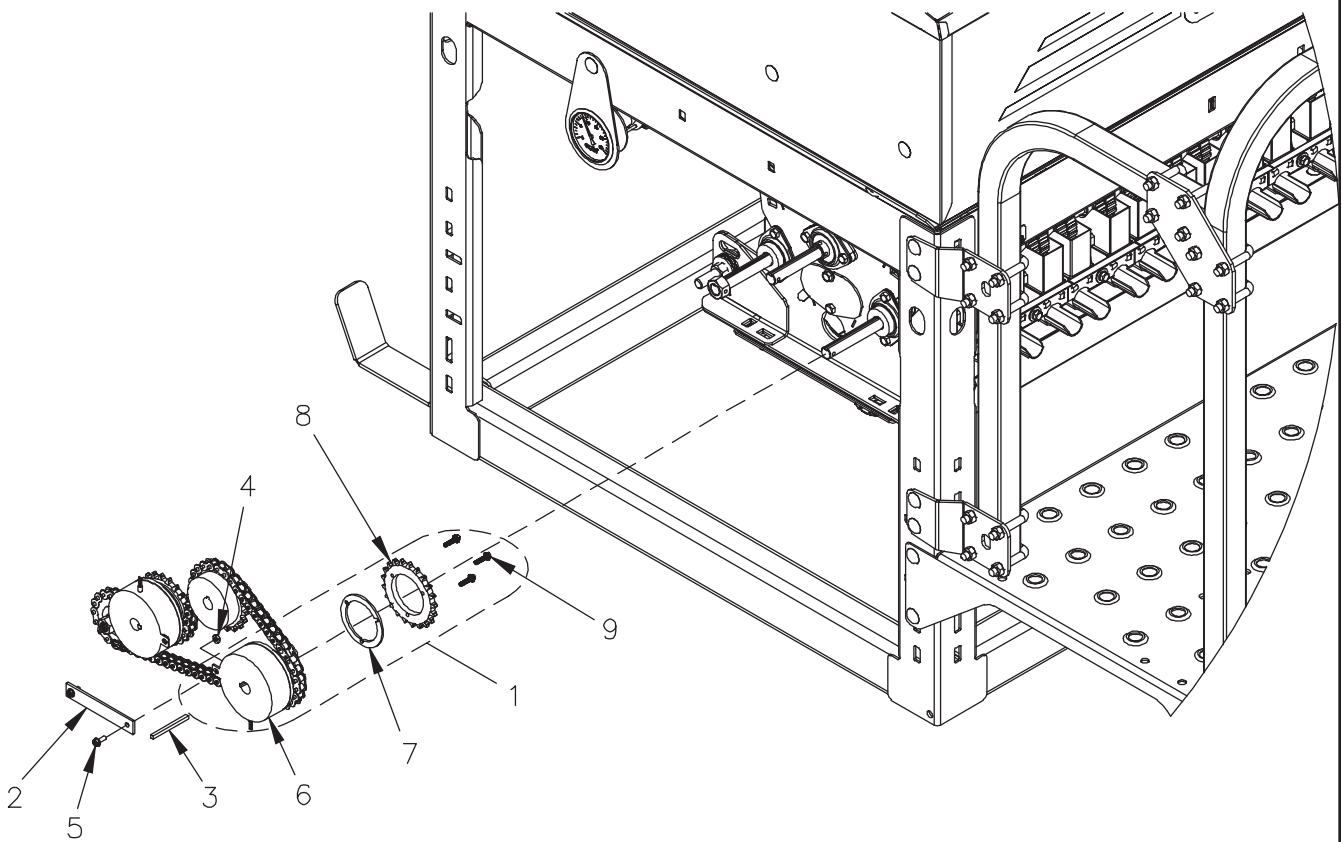
DWG. NO. 7544

REF. NO.	PART NUMBER	DESCRIPTION	QTY.	REF. NO.	PART NUMBER	DESCRIPTION	QTY.
1	957-001-030	Hose Assy 3/8 x 164"	2	13	81007048	Sensor Shaft Coupling	1
2	956-003-031	Straight Adapter 9/16 M To 7/8 M	2	14	950-004-110	Socket Head Cap Screw #10-24 x 1 1/4	1
3	81006004	HD4180 Hydraulic Drive W/Valve	1	15	392-010-010	Lock Nut #10-24 Nylon Insert	3
4	81007051	Blower Mounting Bracket	1	16	060926	Slotted Hex Head Machine Screw #10-24 x 1/2	1
5	952-003-003	Flat Washer 5/8 Inch SAE	4	17	81006003	Application Rate Sensor	1
6	951-005-082	Lock Nut 5/8-11 Uni-Torque	4	18	81007047	Sensor Extension Bracket	1
7	952-003-004	Flat Washer Inch 1/2 SAE	2	19	81007046	L-Mounting Bracket	1
8	952-001-004	Lock Washer 1/2	2	20	950-002-002	Whiz Lock Bolt #10-24 x 1/2	2
9	950-001-111	Hex Head Cap Screw 1/2-13 x 1 1/4 Gr. 5	2	21	956-003-001	Adapter 9/16 M To 3/4 M ORB	2
10	80504708	Sprocket #40B21 Teeth	1	22	956-008-036	Connector ISO Male 3/4 ORB	2
11	81007049	#40 Roller Chain 79 Links	1		81006929	Hydraulic Drive Kit	
12	81006970	U-Bolt 5/8-11 x 3 5/8 x 3 1/4	2				

DRIVE ASSEMBLY OPTIONS

ELECTRIC CLUTCH OPTION

SEC
2



DWG. NO. 7547

REF. NO.	PART NUMBER	DESCRIPTION	QTY.	REF. NO.	PART NUMBER	DESCRIPTION	QTY.
1	81007192	Electric Clutch Assembly 12V (Includes Items 6-9)	2	6	81007189	Electric Clutch W/Connector	A/R
2	81007190	Clutch Stop	1	7	81007194	Clutch Spacer	A/R
3	81007191	Key 3/16 x 2 3/8	2	8	81007193	Sprocket 40A21 With 2.13 Bore	A/R
4	951-005-009	Lock Nut #10-24 2-Way	2	9	392-010-020	Whiz Lock Bolt #8-32 x 3/4 Gr. 5	A/R
5	950-002-002	Whiz Lock Bolt #10-24 x 1/2	2		81007112	Electric Clutch Kit	

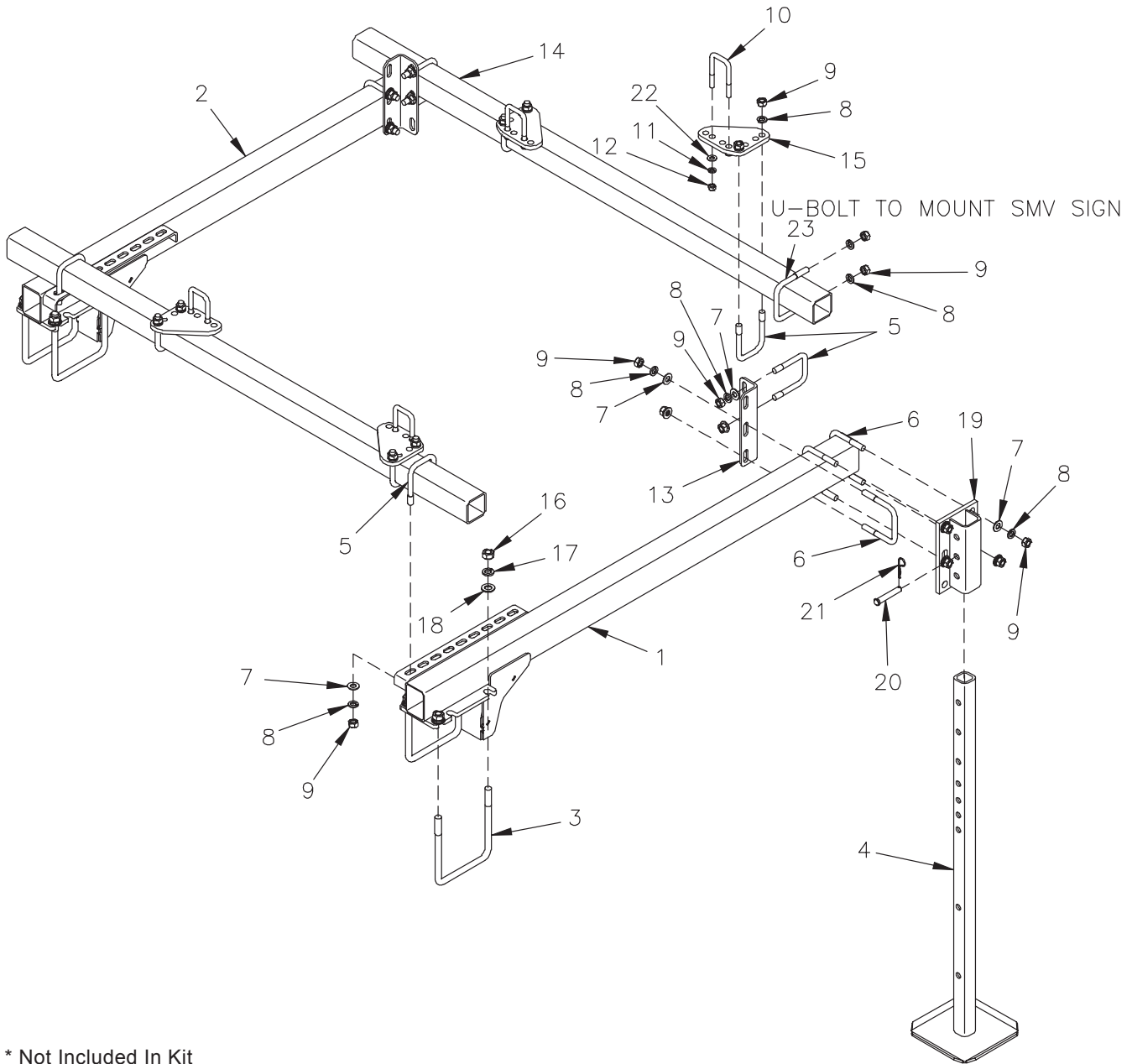
SECTION 3

MOUNTING OPTIONS

PAGE 2	TOOLBAR MOUNT KIT
PAGE 3	UNIVERSAL MOUNT KIT
PAGE 4	RISER KIT

MOUNTING OPTIONS

TOOLBAR MOUNT KIT



* Not Included In Kit

Will Fit On 7x7, 5x7, 5x5 Toolbars

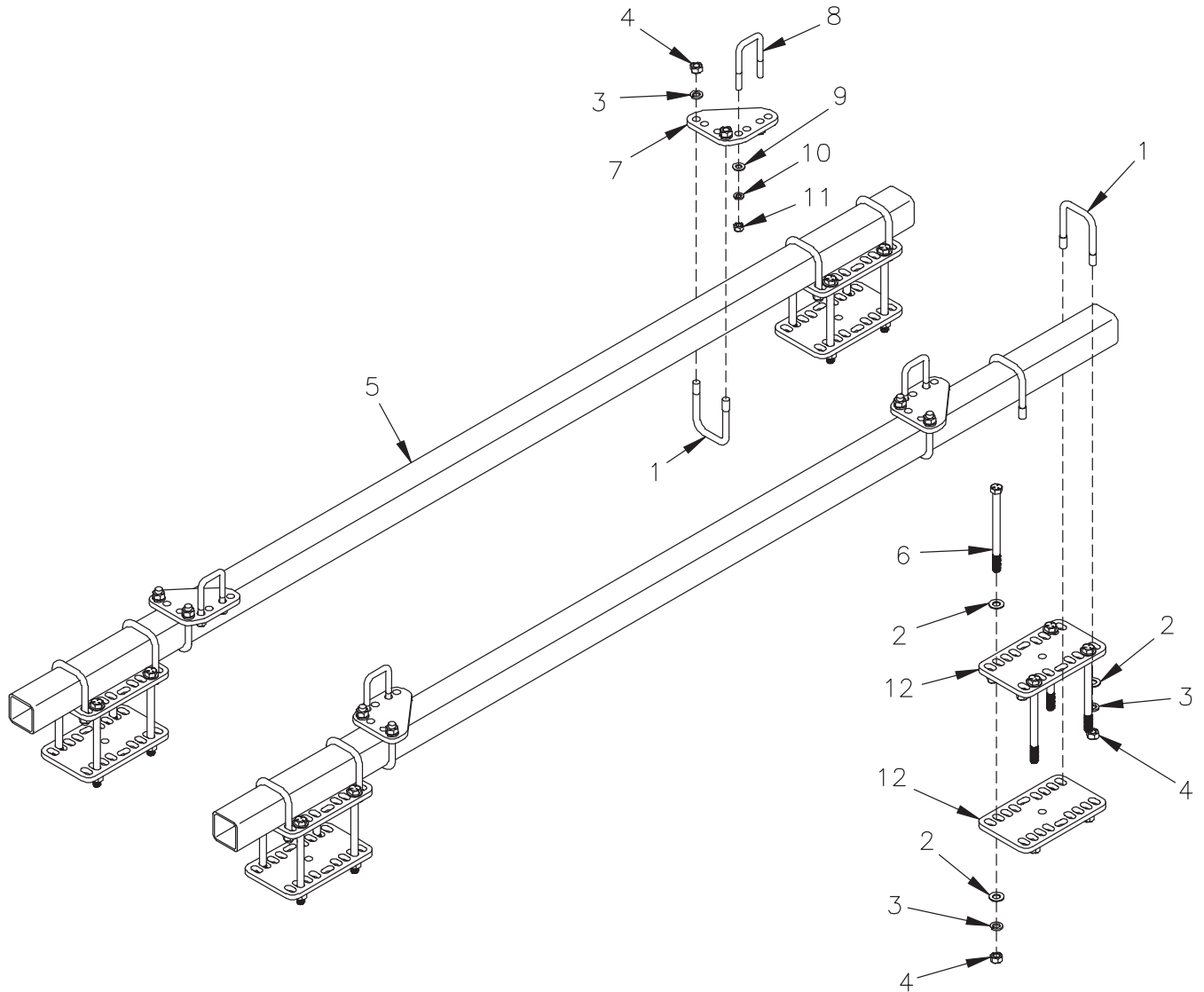
DWG. NO. 7543

REF. NO.	PART NUMBER	DESCRIPTION	QTY.	REF. NO.	PART NUMBER	DESCRIPTION	QTY.
1	81007260	LH Mounting Tube Weldment	1	13	81007261	Mounting Bar	2
2	81007259	RH Mounting Tube Weldment	1	14	81007262	Mounting Tube	2
3	875-001-038	U-Bolt 3/4-10 x 7 x 8 3/4 (7 x 7 Tube)	A/R	15	81007072	Mount Plate	4
	875-001-076*	U-Bolt 3/4-10 x 5 x 9 (5 x 7 Tube)	A/R	16	951-001-009	Hex Nut 3/4-10	8
4	885-001-037	Stand Weldment	1	17	952-001-006	Lock Washer 3/4 Inch Med Split SAE	8
5	850-001-070	U-Bolt 5/8-11 x 3 x 4 1/2	8	18	033-12013	Flat Washer 3/4 Inch SAE	8
6	855-001-055	U-Bolt 5/8-11 x 4 x 4 1/2	4	19	805-001-847	Mount Bracket Weldment	1
7	952-003-003	Flat Washer 5/8 Inch SAE	16	20	953-002-021	Clevis Pin 5/8 x 3 1/2 Gr. 2	1
8	952-001-005	Lock Washer 5/8 Inch Med Split SAE	26	21	953-005-001	Hair Pin Cotter .120 x 2 3/8	1
9	951-001-008	Hex Nut 5/8-11	26	22	952-003-004	Flat Washer 1/2 Inch	8
10	624441	U-Bolt 1/2-13 x 2 x 4 1/4	4	23	000-20254	U-Bolt 5/8-11 x 3 x 4	1
11	952-001-004	Lock Washer 1/2 Inch Med Split SAE	8		81006936	Toolbar Mount Kit	
12	951-001-007	Hex Nut 1/2-13	8				

SEC 3

MOUNTING OPTIONS

UNIVERSAL MOUNT KIT

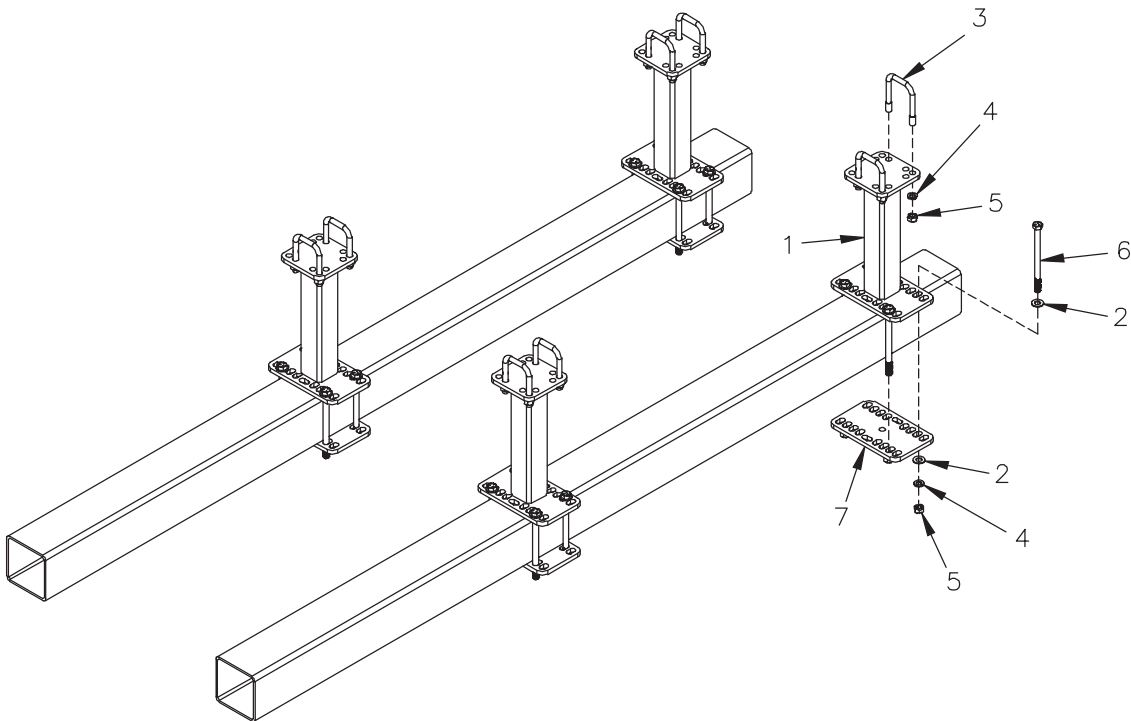
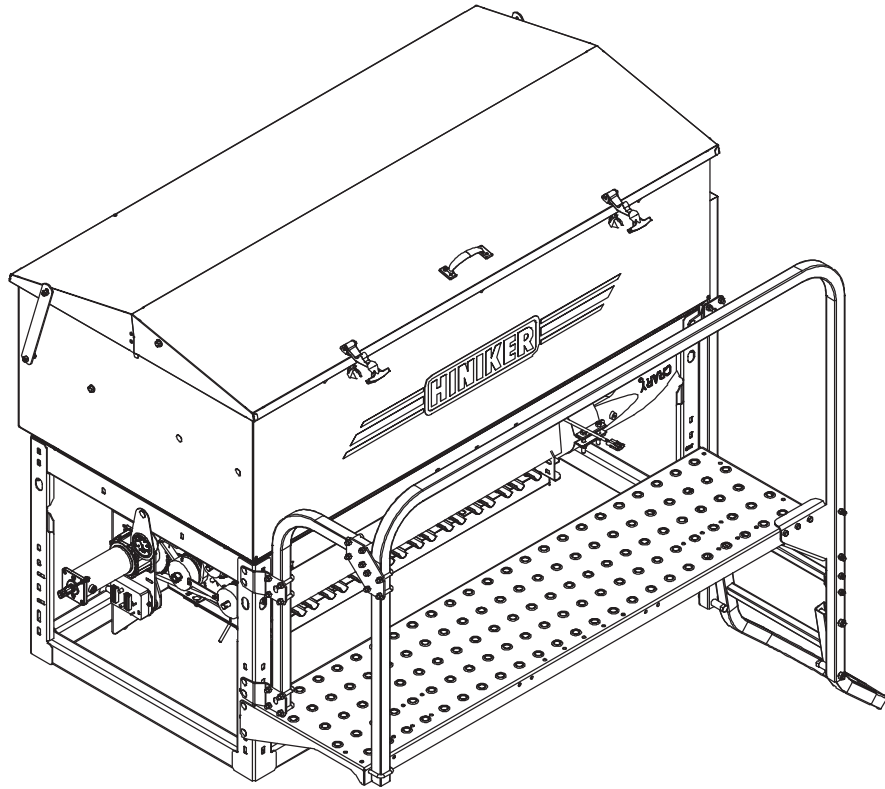


DWG. NO. 7542

REF. NO.	PART NUMBER	DESCRIPTION	QTY.	REF. NO.	PART NUMBER	DESCRIPTION	QTY.
1	850-001-070	U-Bolt 5/8-11 x 3 x 4 1/2	12	8	624441	U-Bolt 1/2-13 x 2 x 4 1/4	4
2	952-003-003	Flat Washer 5/8 Inch SAE	48	9	952-003-004	Flat Washer 1/2 Inch SAE	8
3	952-001-005	Lock Washer 5/8 Inch Med Split SAE	40	10	952-001-004	Lock Washer 1/2 Inch	8
4	951-001-008	Hex Nut 5/8-11	40	11	951-001-007	Hex Nut 1/2-13	8
5	81007071	Mounting Tube	2	12	81007070	Mounting Plate	8
6	950-001-181	Hex Head Cap Screw 5/8-11 x 1/2 Gr. 5	16		81007068	Universal Mounting Kit	
7	81007072	Mount Plate	4				

MOUNTING OPTIONS

RISER KIT



DWG. NO. 7541

REF. NO.	PART NUMBER	DESCRIPTION	QTY.	REF. NO.	PART NUMBER	DESCRIPTION	QTY.
1	81007075	Standoff Weldment	4	5	951-001-008	Hex Nut 5/8-11	32
2	952-003-003	Flat Washer 5/8 Inch SAE	32	6	950-001-181	Hex Head Cap Screw 5/8-11 x 8 1/2 Gr. 5	16
3	850-001-070	U-Bolt 5/8-11 x 3 x 4 1/2	8	7	81007070	Mounting Plate	4
4	952-001-005	Lock Washer 5/8 Inch Med Split SAE	32		81007069	Riser Kit	

SECTION 4

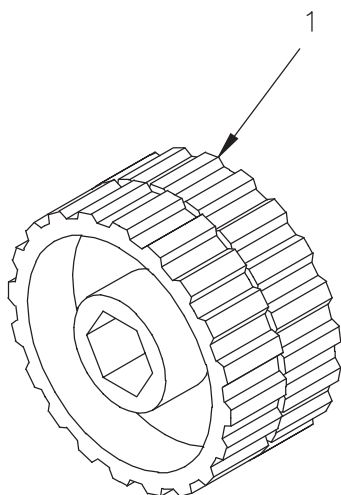
HOPPER ACCESSORIES

PAGE 2	METERING WHEELS
PAGE 3	1 INCH DIAMETER HOSE
PAGE 4	1 INCH SEED DEFLECTOR ASSEMBLIES
PAGE 5	UNIVERSAL DEFLECTOR MOUNT KIT
PAGE 6	10 CU. FT. EXTENSION KIT FOR 7020 HOPPER ONLY
PAGE 7	15 CU. FT. EXTENSION KIT FOR 7040 HOPPER ONLY
PAGE 8	CALIBRATION HOPPER ASSEMBLY
PAGE 9	LOAD CELL KIT COVER CROP

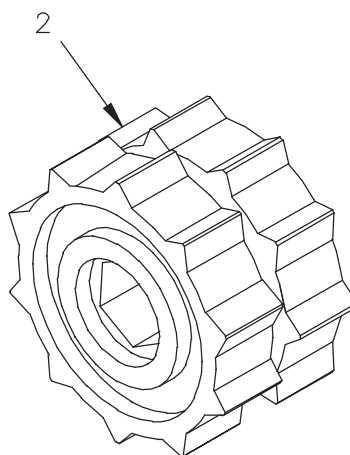
HOPPER ACCESSORIES

METERING WHEELS

SEC
4



RECOMMENDED FOR
 -SMALL SEEDS (UNDER 1/8 INCH DIA.)
 -LOW RATES



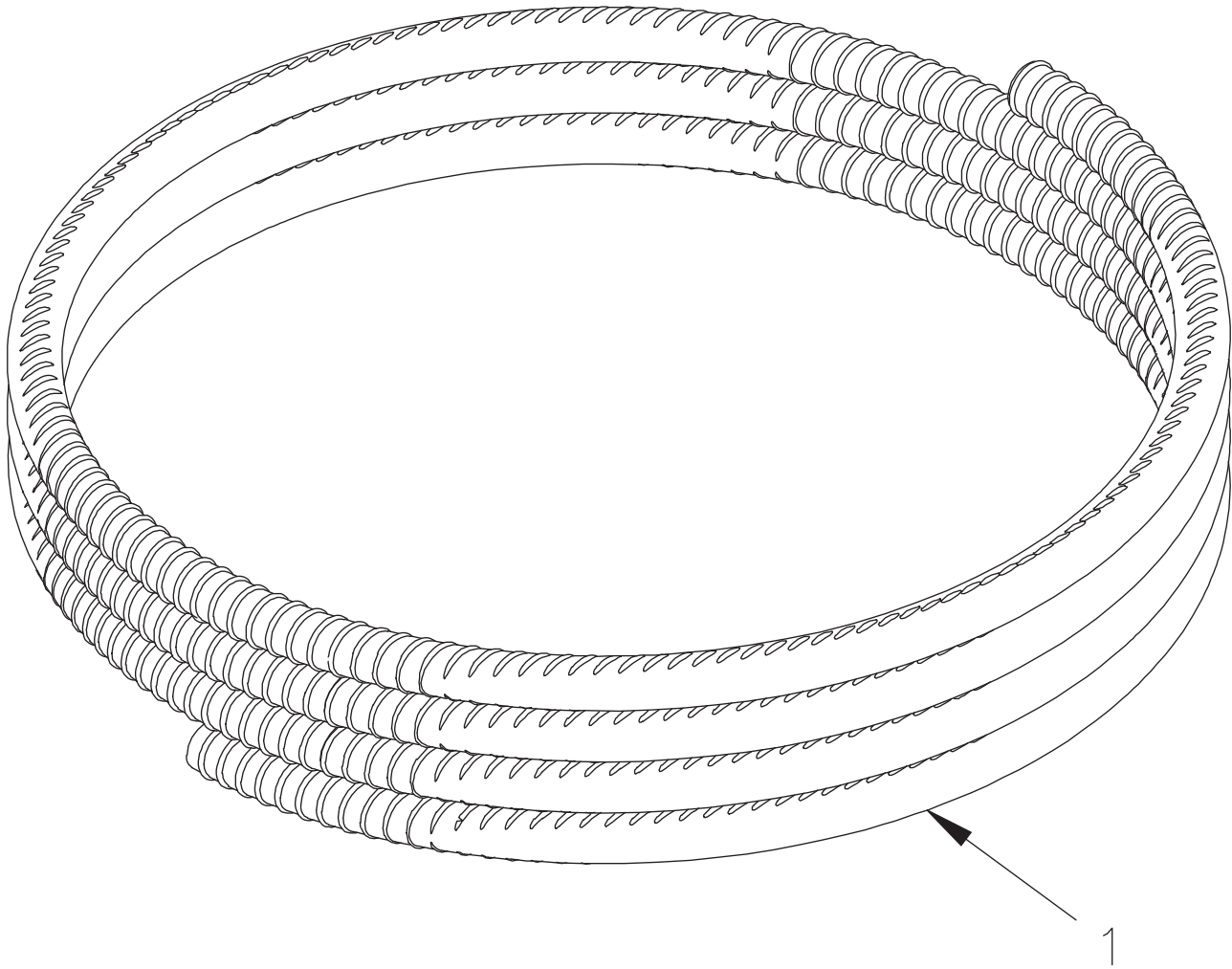
RECOMMENDED FOR
 -LARGE SEEDS (OVER 1/8 INCH DIA.)
 -HIGH RATES FOR SMALL SEEDS
 -FERTILIZER

DWG. NO. 7549

REF. NO.	PART NUMBER	DESCRIPTION	QTY.	REF. NO.	PART NUMBER	DESCRIPTION	QTY.
1	80302327	Black Metering Wheel	A/R	2	80305772	Gray Metering Wheel	A/R

HOPPER ACCESSORIES

1 INCH DIAMETER HOSE



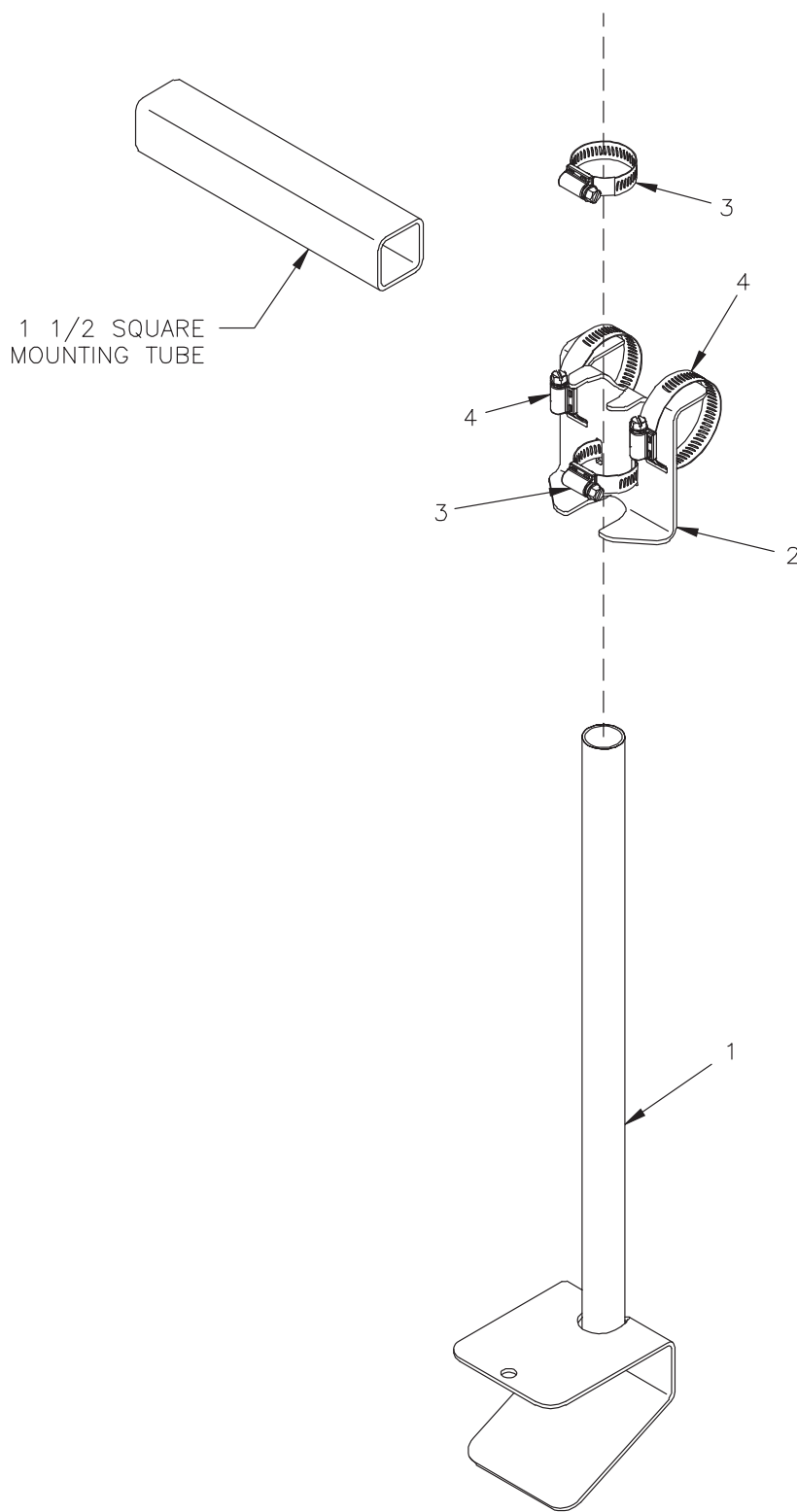
SEC
4

DWG. NO. 7548

REF. NO.	PART NUMBER	DESCRIPTION	QTY.	REF. NO.	PART NUMBER	DESCRIPTION	QTY.
1	81006932	1 Inch Diameter Hose 100 Ft. Roll	1				

HOPPER ACCESSORIES

1 INCH SEED DEFLECTOR ASSEMBLIES

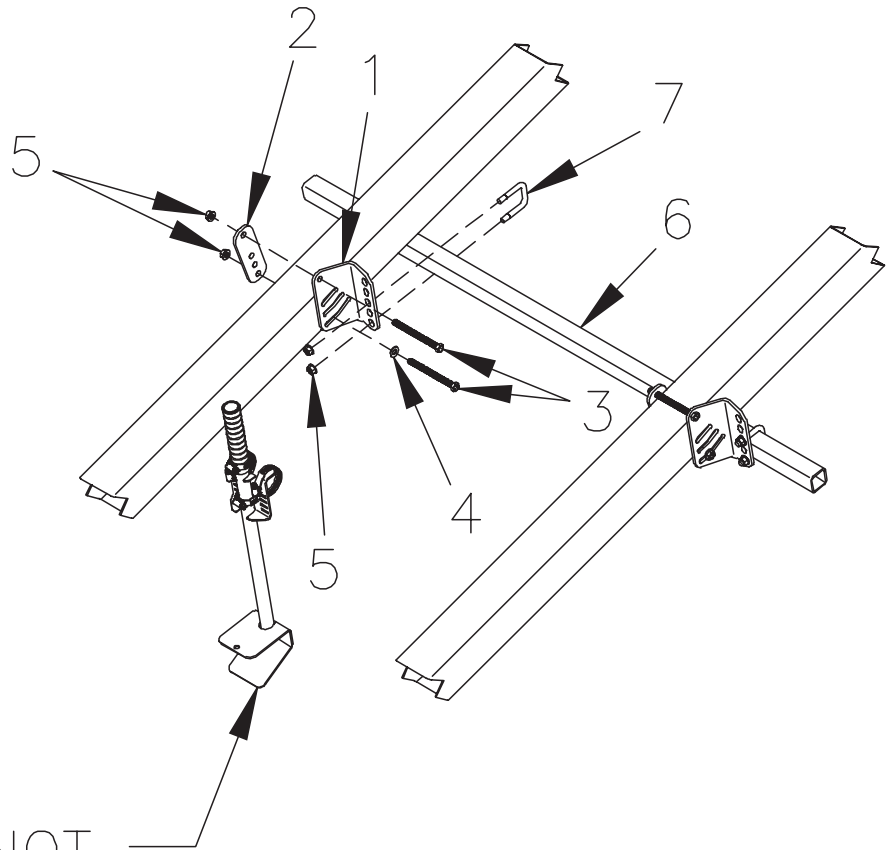


DWG. NO. 7546

REF. NO.	PART NUMBER	DESCRIPTION	QTY.	REF. NO.	PART NUMBER	DESCRIPTION	QTY.
1	81007041	Seed Deflector Weldment	1	4	617176	Hose Clamp 1 1/4" SS	2
2	81007042	Mounting Bracket	1		81006931	1 Inch Seed Deflector Assembly (Items 1-4)	
3	601638	Hose Clamp 1 1/2"	2				

SEC 4

UNIVERSAL DEFLECTOR MOUNT KIT



DEFLECTORS NOT INCLUDED IN KIT.

SEC 4

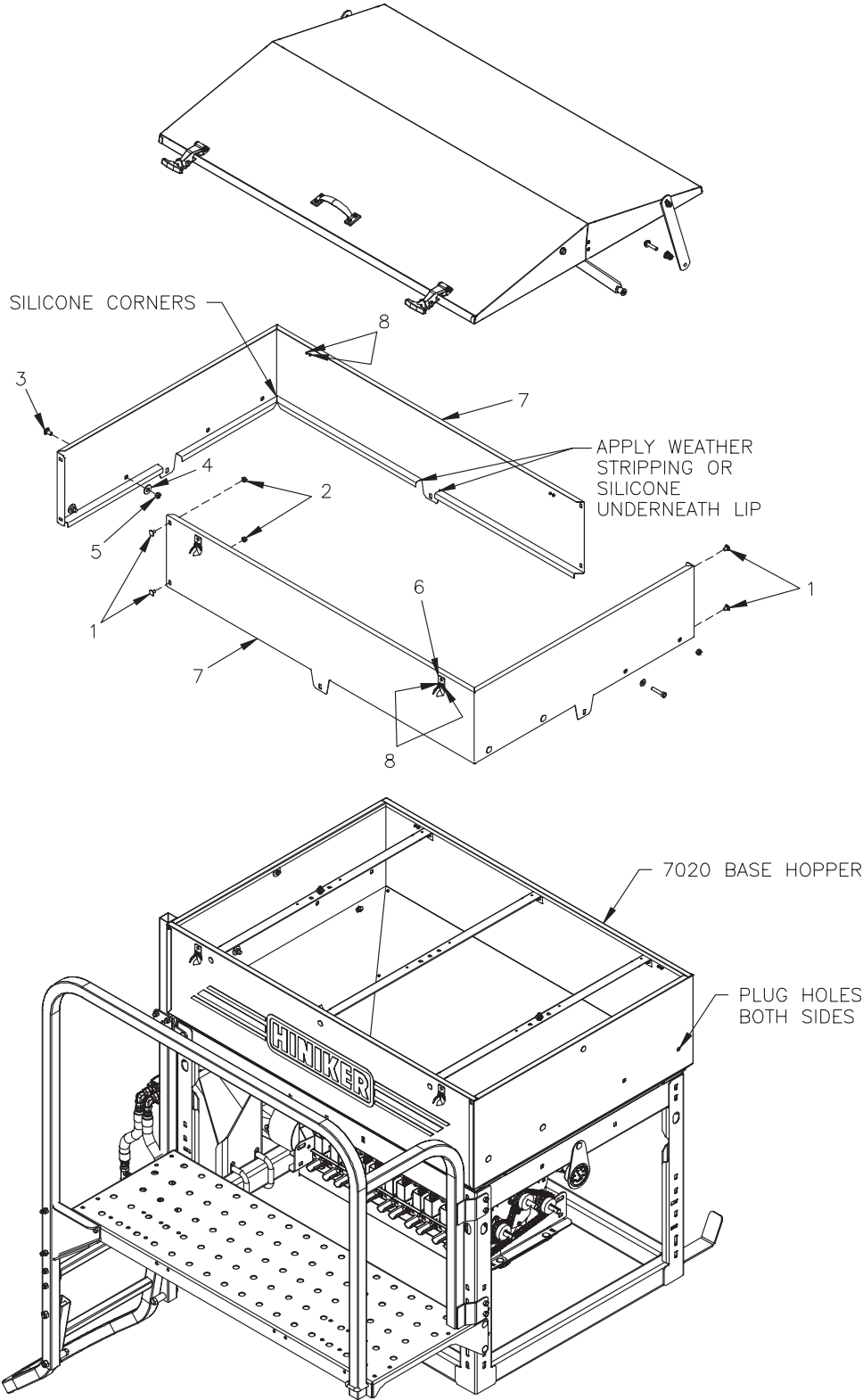
DWG. NO. 7553

REF. NO.	PART NUMBER	DESCRIPTION	QTY.	REF. NO.	PART NUMBER	DESCRIPTION	QTY.
1	81007352	Seed Tube Mount Bracket	8	5	951-005-003	Mac Lock Nut 3/8-16	32
2	81007351	Backup Bar	8	6	81007350	Cross Tube	4
3	950-001-362	Hex Head Cap Screw 3/8-16 x 5 Full Thread Gr. 5	16	7	81002741	U-Bolt 3/8-16 x 1 1/2 x 2 1/4	8
4	952-003-006	Flat Washer 3/8 Inch SAE	8		81007348	Universal Deflector Mount Kit	

HOPPER ACCESSORIES

10 CU. FT. EXTENSION KIT FOR 7020 HOPPER ONLY

SEC
4

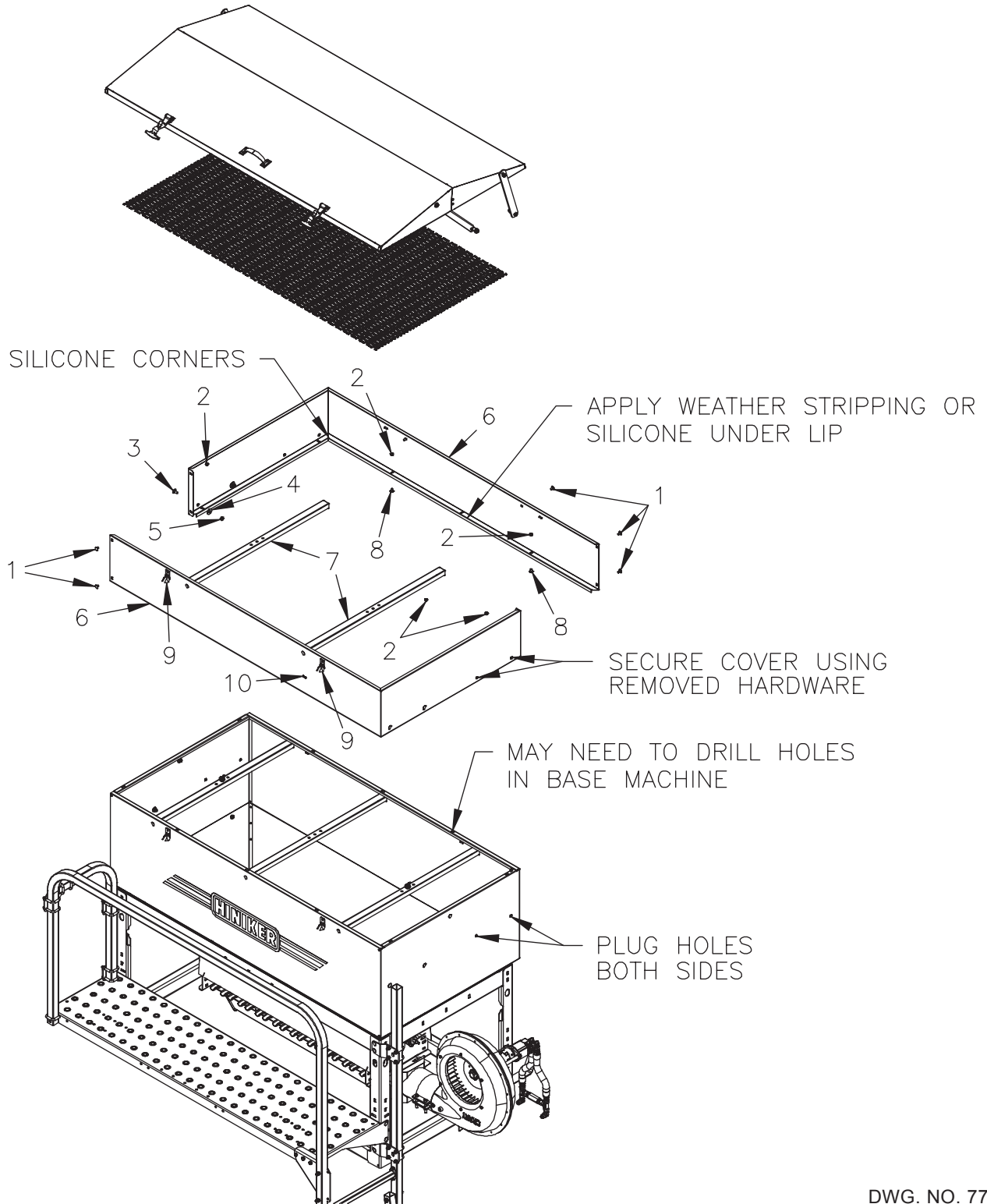


DWG. NO. 7550

REF. NO.	PART NUMBER	DESCRIPTION	QTY.	REF. NO.	PART NUMBER	DESCRIPTION	QTY.
1	950-003-002	Carriage Bolt 5/16-18 x 1/2 Gr. 5	4	6	720-02123	Clevis Bracket	2
2	951-002-002	Whiz Lock Nut 5/16-18	4	7	81006938	Extension Panel	2
3	950-003-054	Carriage Bolt 3/8-16 x 3/4 SHS	8	8	954-002-009	Pop Rivet 3/16 x 1/8 SS	8
4	952-002-021	Washer 7/16 Inch	8		81007001	10 Cu. Ft. Extension Kit	
5	951-002-003	Whiz Lock Nut 3/8-16	8				

HOPPER ACCESSORIES

15 CU. FT. EXTENSION KIT FOR 7040 HOPPER ONLY



SEC 4

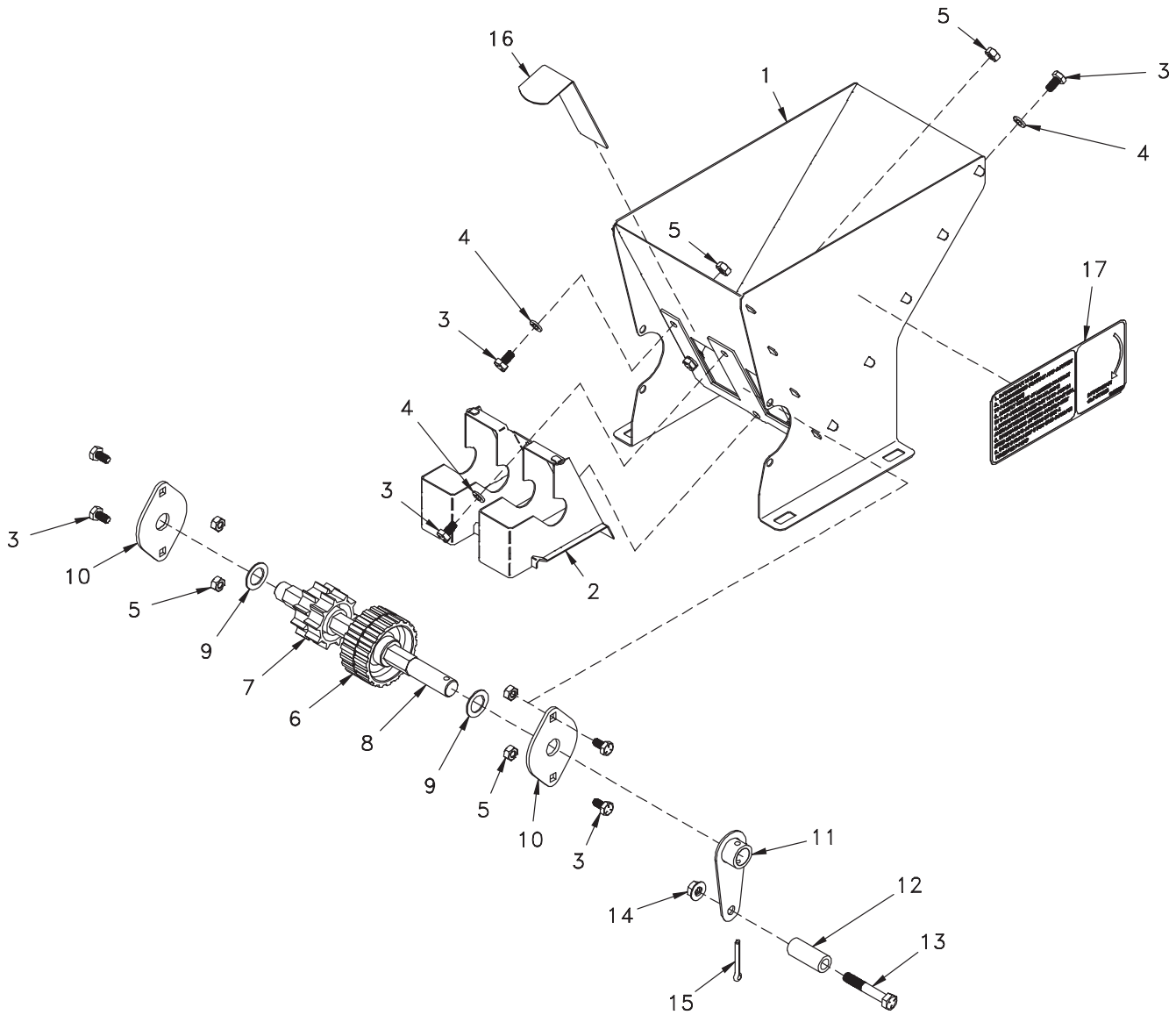
DWG. NO. 7713

REF. NO.	PART NUMBER	DESCRIPTION	QTY.	REF. NO.	PART NUMBER	DESCRIPTION	QTY.
1	950-003-002	Carriage Bolt 5/16-18 x 1/2 Gr. 5	8	7	81007007	Cross Brace	2
2	951-002-002	Whiz Lock Nut 5/16-18	16	8	031-06051	Hex Head Cap Screw 5/16-18 x 1/2 Gr. 5	8
3	950-003-054	Carriage Bolt 3/8-16 x 3/4 SHS	8	9	720-02123	Clevis Bracket	2
4	952-002-021	Washer 7/16	8	10	954-002-009	Pop Rivet 3/16 x 1/8 OEDH	4
5	951-002-003	Whiz Lock Nut 3/8-16	8		81007385	15 Cu. Ft. Extension Kit	
6	81007405	15 Cu. Ft. Extension	2				

HOPPER ACCESSORIES

CALIBRATION HOPPER ASSEMBLY

SEC
4



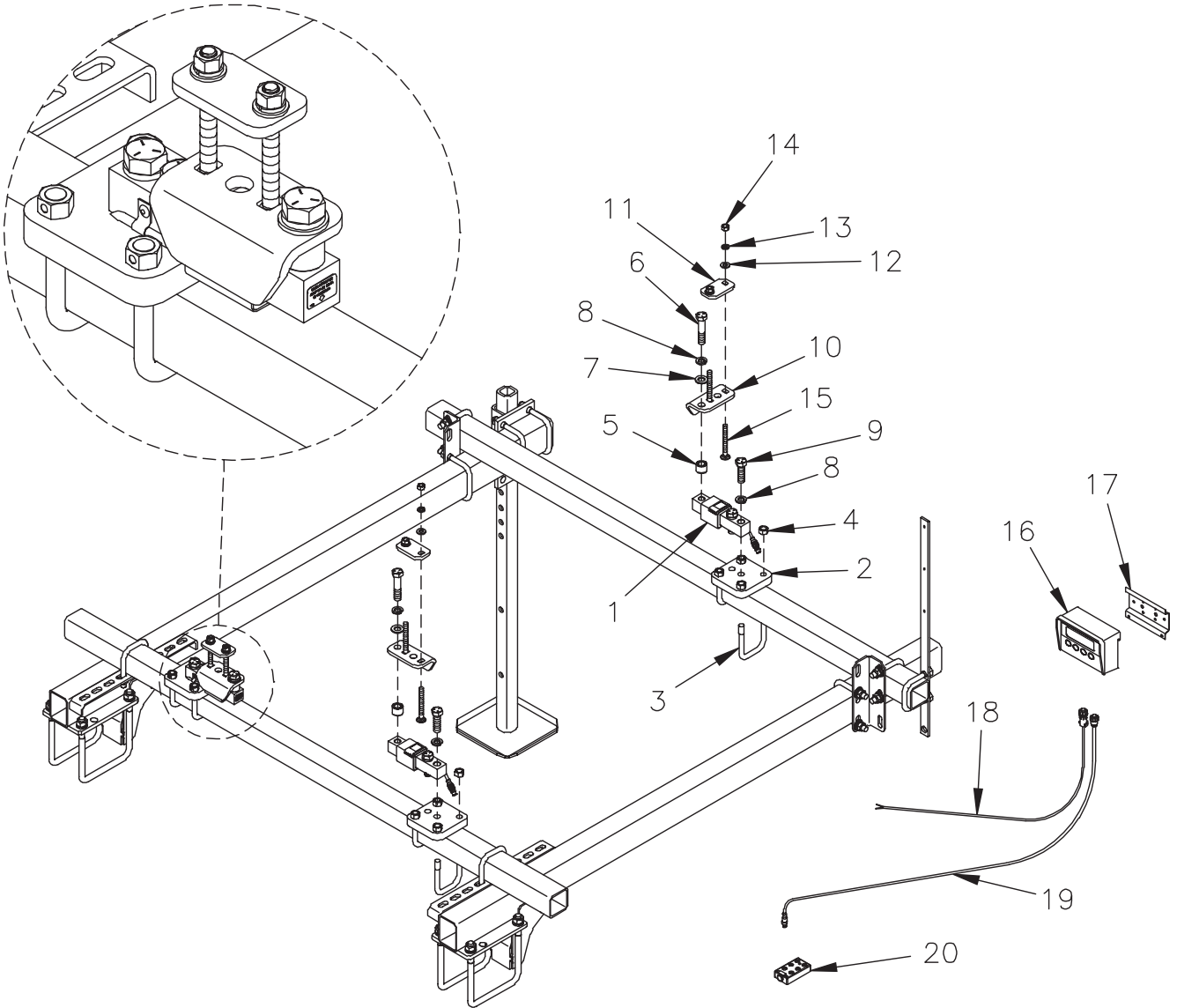
DWG. NO. 7558

REF. NO.	PART NUMBER	DESCRIPTION	QTY.	REF. NO.	PART NUMBER	DESCRIPTION	QTY.
1	81007374	Seed Metering Housing Weldment	1	10	81006397	Poly Seal	2
2	81006951	Support Assy	1	11	81007372	Arm Weldment	1
3	950-001-235	Hex Head Cap Screw 1/4-20 x 1/2 Gr. 5	10	12	81007371	Bushing	1
4	952-001-001	Lock Washer 1/4 Inch Med Split SAE	6	13	031-06059	Hex Head Cap Screw 5/16-18 x 2 Gr. 5	1
5	951-002-001	Flanged Whiz Lock Nut 1/4-20	9	14	951-005-036	Lock Nut 5/16-18 Mac Lock	1
6	80302327	Black Metering Wheel	1	15	035-42033	Cotter Pin 5/32 x 1 1/4	1
7	80305772	Gray Metering Wheel	1	16	81006957	Metering Slide SS	1
8	81007373	Hex Shaft Calibration	1	17	81007370	Decal Calibration Sequence	1
9	952-004-049	Machine Bushing 1 x 5/8 x 18 Ga.	2		81007363	Calibration Hopper Assembly	

HOPPER ACCESSORIES

LOAD CELL INSTALLATION COVER CROP

SEC 4



DWG. NO. 7714

REF. NO.	PART NUMBER	DESCRIPTION	QTY.	REF. NO.	PART NUMBER	DESCRIPTION	QTY.
1	81007180	Load Cell 1.5 Db-16 [®] EZ Mate	3	12	952-003-004	Flat Washer 1/2 SAE	6
2	81007407	Mount Plate Load Cell CC	3	13	952-001-004	Lock Washer 1/2	6
3	850-001-070	U-Bolt 5/8-11 x 3 5/8 x 4 9/16	6	14	951-001-007	Hex Nut 1/2-13	6
4	951-005-044	Lock Nut 5/8-11 2-Way	12	15	950-003-088	Carriage Bolt 1/2-13 x 4 1/2 Full Thread	6
5	81007338	Spacer Tank Mount	3	16	81007181	Console EZ 400 Digistar	1
6	950-001-360	Hex Head Cap Screw 3/4-16 x 3 1/2 Gr. 5	3	17	81007263	Console Mount Bracket	1
7	033-12013	Flat Washer 3/4 SAE	3	18	81007184	Cable Power 17' 2 Wire	1
8	952-001-006	Lock Washer 3/4 Split SAE	9	19	81007183	Cable EZ Mate Amp 50'	1
9	950-001-361	Hex Head Cap Screw 3/4-16 x 2 1/2 Gr. 5	6	20	81007182	J-Block-6 Port EZ Mate	1
10	81007409	Load Cell Mount Bottom	3		81007362	Load Cell Kit Cover Crop	
11	81007408	Load Cell Mount Top	3				