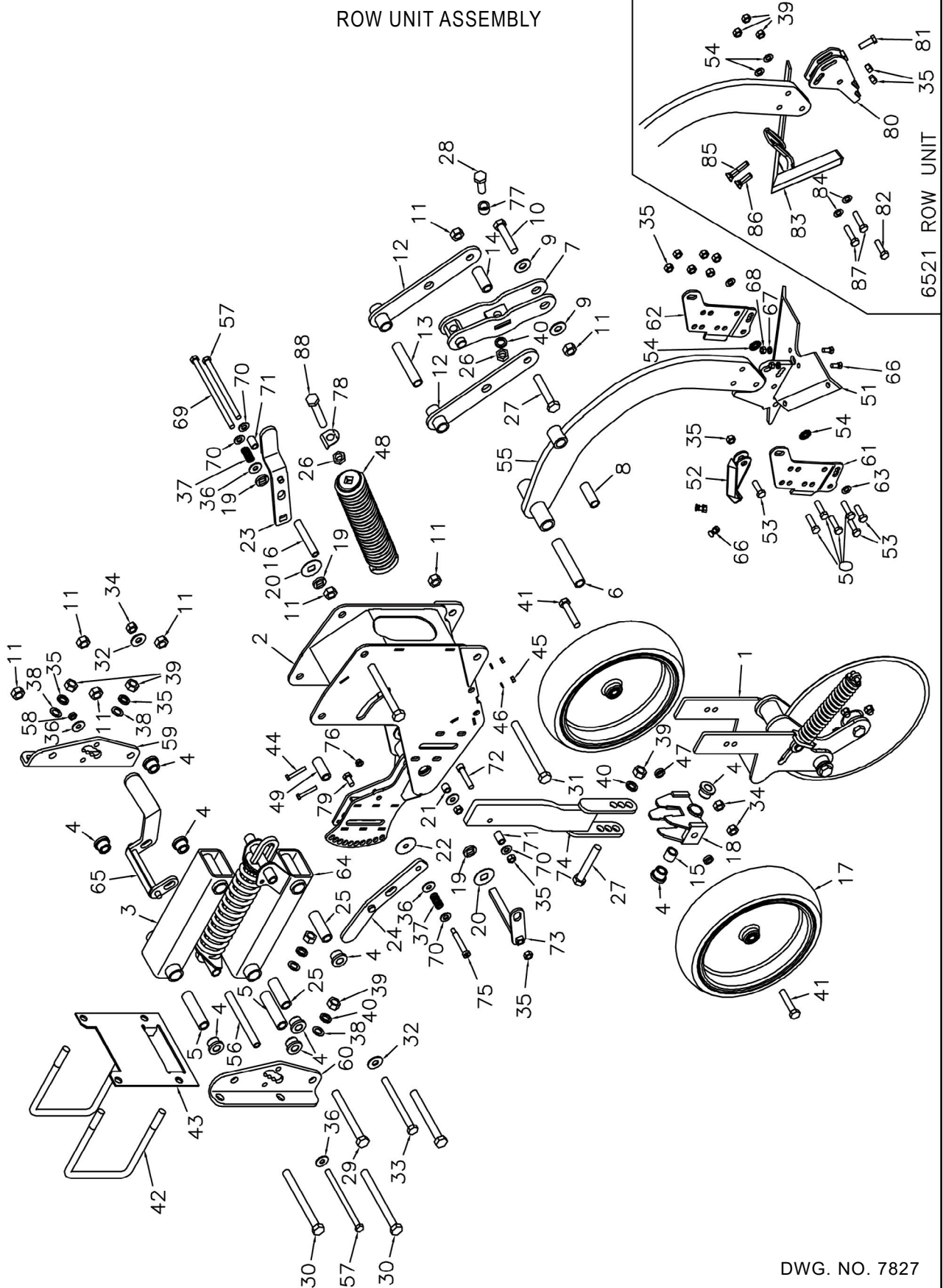


HINIKER
CULTI-PRO
MODEL 6501 & 6521
PARTS BOOK

PART NUMBER 81007635

CULTI-PRO MODEL 6501 & 6521

ROW UNIT ASSEMBLY



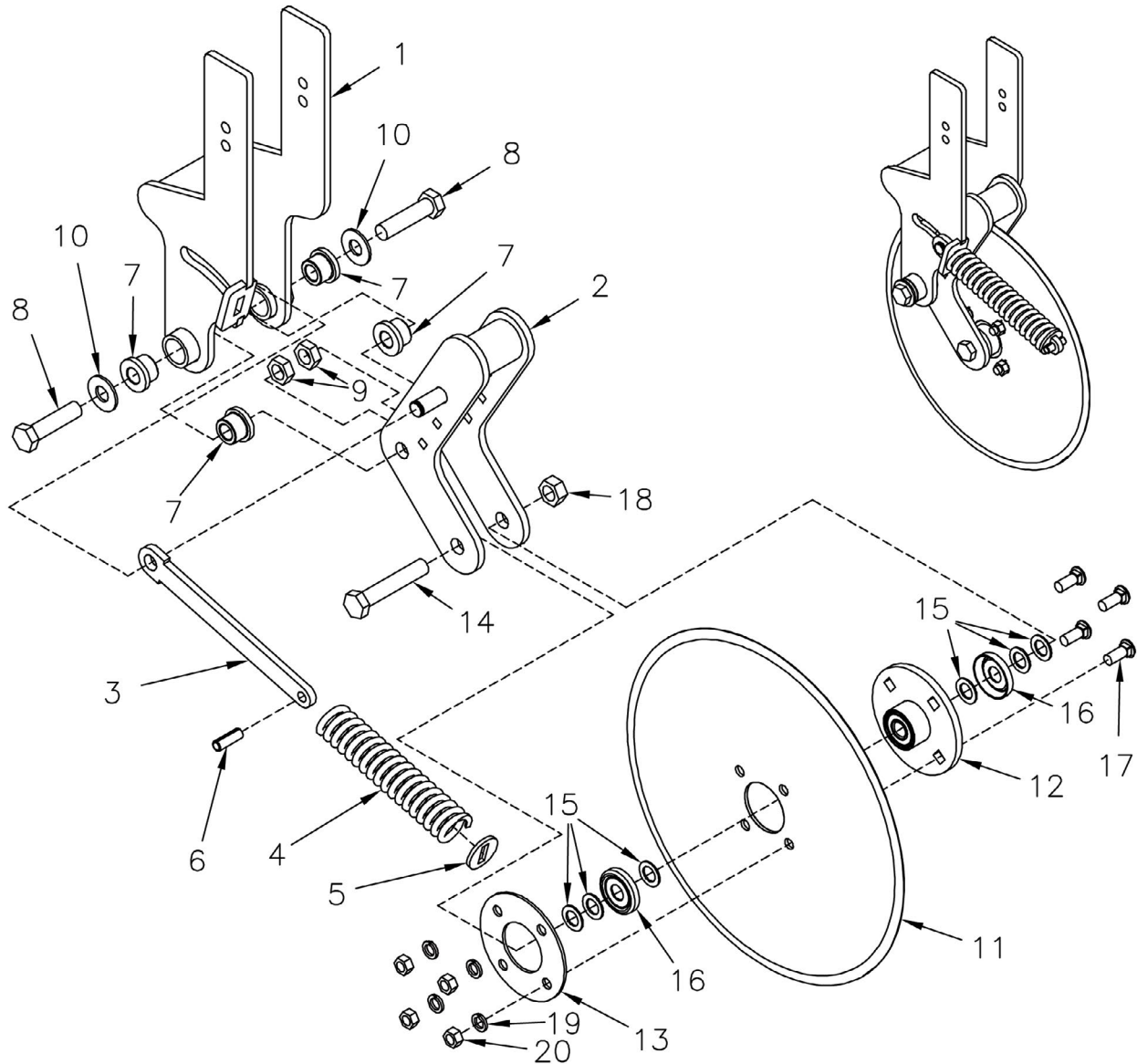
DWG. NO. 7827

CULTI-PRO MODEL 6501 & 6521

ITEM 1

REF. NO.	PART NUMBER	DESCRIPTION	QTY.	REF. NO.	PART NUMBER	DESCRIPTION	QTY.
1	81007493	COULTER PIVOT ASSEMBLY	1	61	81007522	LH SHARE SUPPORT MOUNT	1
2	81007494	FRAME WELD	1	62	81007523	RH SHARE SUPPORT MOUNT	1
3	81007495	UPPER LINK WELD	1	63	952-004-037	MACHINE BUSHING 1/2 X 7/8 X 18 GA. PLT	2
4	81004019	FLANGE BEARING	10	64	81007524	LOWER LINK ASSEMBLY	1
5	81004008	INNER BUSHING	2	65	81007664	HANDLE WELD	1
6	81007496	SHANK PIVOT BUSHING	1	66	950-007-001	PLOW BOLT 3/8-16 X 1" GR. 5 PLT	4
7	81007497	LOWER TRIP LINK WELD	1	67	952-001-007	LOCKWASHER 3/8 MED SPLIT SAE	4
8	81007498	SHANK TRIP BUSHING	1	68	951-001-005	HEX NUT 3/8-16	4
9	033-12013	WASHER FLAT 3/4 SAE PLT	2	69	950-001-372	HEX HEAD CAP SCREW 1/2-13 X 9/12 GR. 5 PLT	1
10	950-001-174	HEX HEAD CAP SCREW 3/4-10 X 3 1/2 GR. 5 PLT	1	70	952-003-004	FLAT WASHER 1/2 SAE	4
11	951-005-037	LOCK NUT 3/4-10 2-WAY	8	71	81007687	BUSHING	2
12	81007499	UPPER TRIP LINK WELD	2	72	950-004-130	SOCKET HEAD CAP SCREW 1/2-13 UNC X 2 1/2	1
13	81007500	TRIP TOP BUSHING	1	73	81007659	SQUARE TUBE WELD	1
14	81007501	TRIP STOP BUSHING	1	74	81007662	WHEEL SUPPORT WELD	1
15	81007503	SPACER	1	75	950-006-010	SHOULDER BOLT 3/8-16 X 1/2 X 2 3/4 LG	1
16	81007504	TUBE	1	76	951-002-003	FLANGE NUT 3/8-16 WZLK	1
17	81006126	4 X 16 TIRE ASSEMBLY	2	77	81007688	TRIP BUSHING	1
18	81007505	WHEEL PIVOT WELD	1	78	81007690	LOCK PLATE	1
19	81007507	SQUARE ID WASHER	3	79	950-001-231	HEX HEAD CAP SCREW 1/2-13NC X 1" GR. 5 PLT	1
20	81007508	WASHER SQUARE ID	2	80	81007640	SWEEP MOUNT WELD	1
21	81007509	BUSHING SHORT	1	81	950-001-125	HEX HEAD CAP SCREW 1/2-13NC X 1 1/2 GR. 5 PLT	1
22	81007512	WASHER	1	82	950-001-183	HEX HEAD CAP SCREW 1/2-13NC X 1 3/4 GR. 5 PLT	1
23	81007513	ADJUSTMENT HANDLE ASSY	1	83	81007639	SWEEP 14"	1
24	81007514	ADJUSTMENT STRAP ASSY	1	84	952-004-087	WASHER .531 ID X 1" OD X .060 THICK	4
25	81007630	INNER BUSHING SHORT	2	85	950-007-007	PLOW BOLT 1/2-13 X 2 1/2 GR. 5 PLT	1
26	951-005-052	NUT JAM 3/4-10	3	86	950-007-013	PLOW BOLT 1/2-13 X 1 3/4 GR. 5 PLT	1
27	950-001-244	HEX HEAD CAP SCREW 3/4-10NC X 4 GR. 5 PLT	2	87	950-001-112	HEX HEAD CAP SCREW 1/2-13NC X 2 GR. 5 PLT	2
28	950-001-166	HEX HEAD CAP SCREW 3/4-10NC X 2 GR. 5 PLT	1	88	950-001-371	HEX HEAD CAP SCREW 3/4-10UNC X 5 PLT FULL THREAD	1
29	950-001-272	HEX HEAD CAP SCREW 3/4-10NC X 6 3/4 GR. 5 PLT	1				
30	950-001-229	HEX HEAD CAP SCREW 3/4-10NC X 8 GR. 5 PLT	2				
31	950-001-153	HEX HEAD CAP SCREW 3/4-10NC X 7 1/2 GR. 5	1				
32	952-002-007	WASHER FLAT 5/8 WRT	2				
33	950-001-143	HEX HEAD CAP SCREW 5/8-11NC X 7 GR. 5 PLT	1				
34	951-005-044	LOCKNUT 5/8-11 2-WAY	3				
35	10304	LOCKNUT 1/2-13 UNC	11				
36	952-002-005	FLAT WASHER 1/2 WRT	6				
37	81007567	COMPRESSION SPRING	2				
38	952-004-003	MACHINE BUSHING 49/64 X 1 1/4 X .075	4				
39	951-001-009	HEX NUT 3/4-10	5				
40	952-001-006	LOCKWASHER 3/4 MED SPLIT SAE	2				
41	950-001-141	HEX HEAD CAP SCREW 5/8-11NC X 3 GR. 5 PLT	2				
42	875-001-038	U-BOLT PLATED	2				
43	81005577	SUPPORT PLATE	1				
44	031-06059	HEX HEAD CAP SCREW 5/16-18NC X 2 GR. 5 PLT	2				
45	951-001-004	HEX NUT 5/16-18	2				
46	952-001-002	LOCKWASHER 5/16 MED SPLIT SAE	2				
47	81007689	WHEEL SPACER	2				
48	81007515	SPRING ASSEMBLY	1				
49	81007516	HEAVY SPRING BUSHING	1				
50	950-001-183	HEX HEAD CAP SCREW 1/2-13NC X 1 3/4 GR. 8 PLT	4				
51	81007517	SHARE SUPPORT WELD	1				
52	81004425	POINT WELD	1				
53	950-001-125	HEX HEAD CAP SCREW 1/2-13NC X 1 1/2 GR. 5 PLT	3				
54	952-004-057	LOCKWASHER 1/2 INT-EXT	2				
55	81007518	SHANK WELD	1				
56	81007519	FRONT SPRING BUSHING	1				
57	950-001-259	HEX HEAD CAP SCREW 1/2-13NC X 8 GR. 5 PLT	1				
58	951-005-061	HEX JAM NUT 1/2-13	1				
59	81007520	RH MOUNT ANGLE	1				
60	81007521	LH MOUNT ANGLE	1				

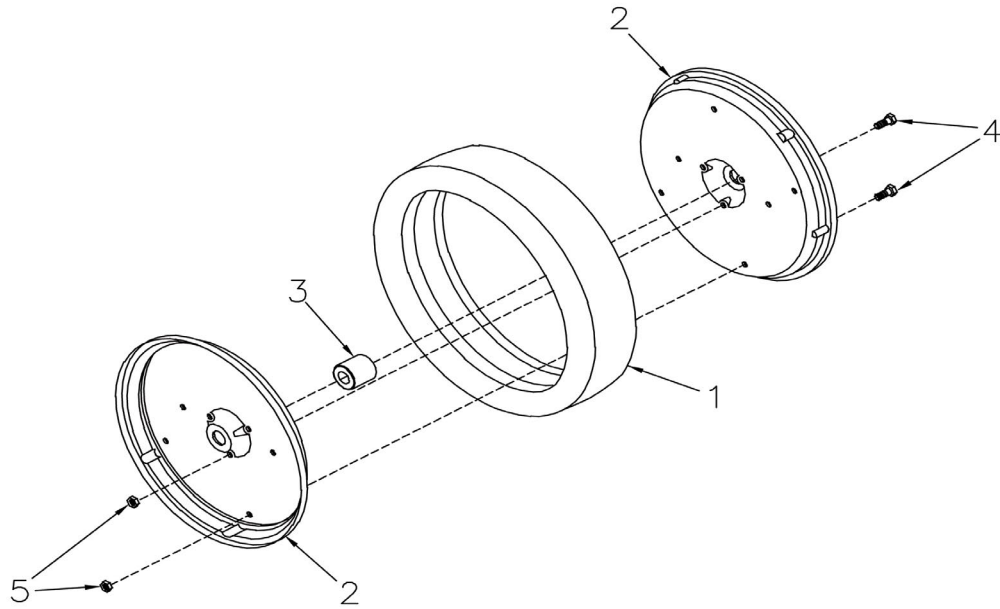
COULTER PIVOT ASSEMBLY



DWG. NO. 7787

REF. NO.	PART NUMBER	DESCRIPTION	QTY.	REF. NO.	PART NUMBER	DESCRIPTION	QTY.
1	81007477	Coulters Support Weld	1	11	810-001-001	Coulters Blade Straight	1
2	81007478	Coulters Pivot Weld	1	12	81004407	Hub with Bearing Assembly	1
3	81007491	Spring Strap	1	13	805-001-015	Backup Washer	1
4	000-69059	Compression Spring	1	14	950-001-244	Hex Head Cap Screw 3/4-10NC x 4 Gr. 5 PLT	1
5	81007492	Spring Washer	1	15	952-004-003	Machine Bushing 49/64 x 1 1/4 x .075	6
6	953-003-019	Slotted Spring Pin 1/2 x 2 ZP	1	16	81004802	Dust Cap	2
7	81004019	Flange Bearing	3	17	950-003-028	Carriage Bolt 1/2-13 x 1 1/4 Gr. 5	4
8	950-001-031	Hex Head Cap Screw 3/4-10NC x 3 Gr. 5 PLT	2	18	951-005-037	Locknut 3/4-10 2-Way	1
9	951-003-019	Locknut 3/4-10UNC Nylon Insert PLT	2	19	952-001-004	Lockwasher 1/2 MED Split SAE	4
10	033-12013	Washer Flat SAE 3/4 PLT	2	20	951-001-007	Hex Nut 1/2-13	4

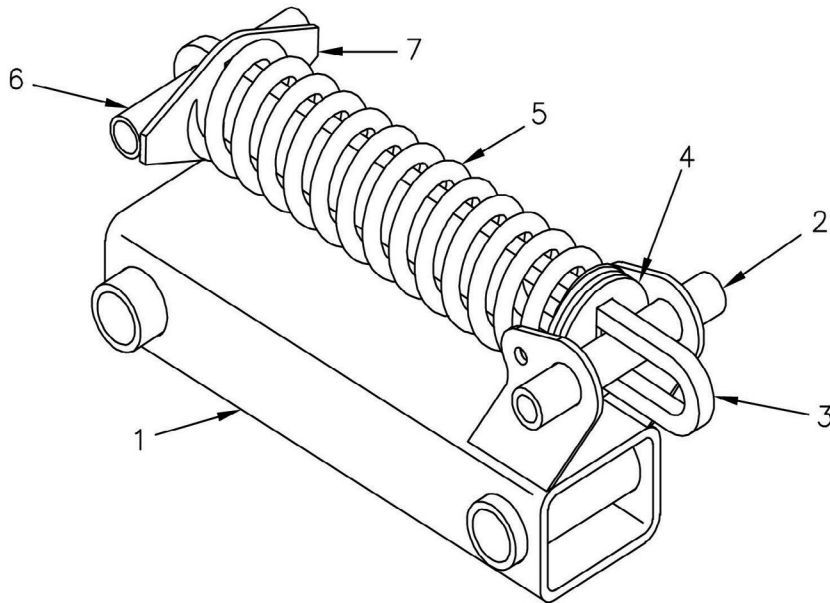
4 X 16 TIRE ASSEMBLY



DWG. NO. 7788

REF. NO.	PART NUMBER	DESCRIPTION	QTY.	REF. NO.	PART NUMBER	DESCRIPTION	QTY.
1	81004123	Tire 4 x 16	1	4	950-001-232	Hex Head Cap Screw 5/16-18 x 5/8 Gr. 5	7
2	81003196	Half Wheel	2	5	951-005-064	2-Way Lock Nut 5/16-18	7
3	81003504	40MM Bearing	1				

LOWER LINK ASSEMBLY

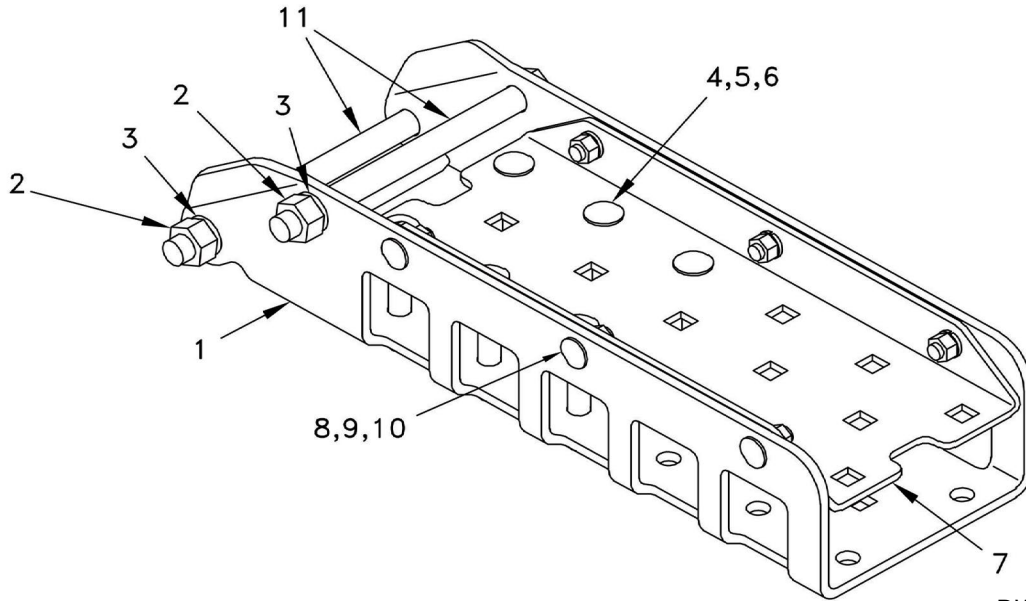


DWG. NO. 7828

REF. NO.	PART NUMBER	DESCRIPTION	QTY.	REF. NO.	PART NUMBER	DESCRIPTION	QTY.
1	81007532	Lower Link Weld	1	5	25011324	Compression Spring	1
2	81007536	Stop Bushing	1	6	81007661	Spring Strap Bushing	1
3	81007537	Spring Strap	1	7	81007660	Spring Washer Front	1
4	81007538	Spring Washer	3				

CULTI-PRO MODEL 6501 & 6521

MOUNT CHANNEL ASSEMBLY



DWG. NO. 7829

REF. NO.	PART NUMBER	DESCRIPTION	QTY.	REF. NO.	PART NUMBER	DESCRIPTION	QTY.
1	81007705	CUTAWAY MOUNT CHANNEL	1	7	81007706	CLAMP CHANNEL	1
2	951-001-008	HEX NUT 5/8-11 UNC	2	8	950-003-029	CARRIAGE BOLT 3/8-16 X 1' GR. 5 PLT	6
3	952-001-005	LOCKWASHER 5/8	2	9	952-001-007	LOCKWASHER 3/8	6
4	952-001-004	LOCKWASHER 1/2	6	10	951-001-005	HEX NUT 3/8-16 UNC	6
5	951-001-007	HEX NUT 1/2-13 UNC	6	11	950-001-165	HEX NUT 5/8-11 UNC X 7 1/2 GR. 5 PLT	2
6	030-16139	CARRIAGE BOLT 1/2-13 X 3 1/4 GR. 5 PLT	6				

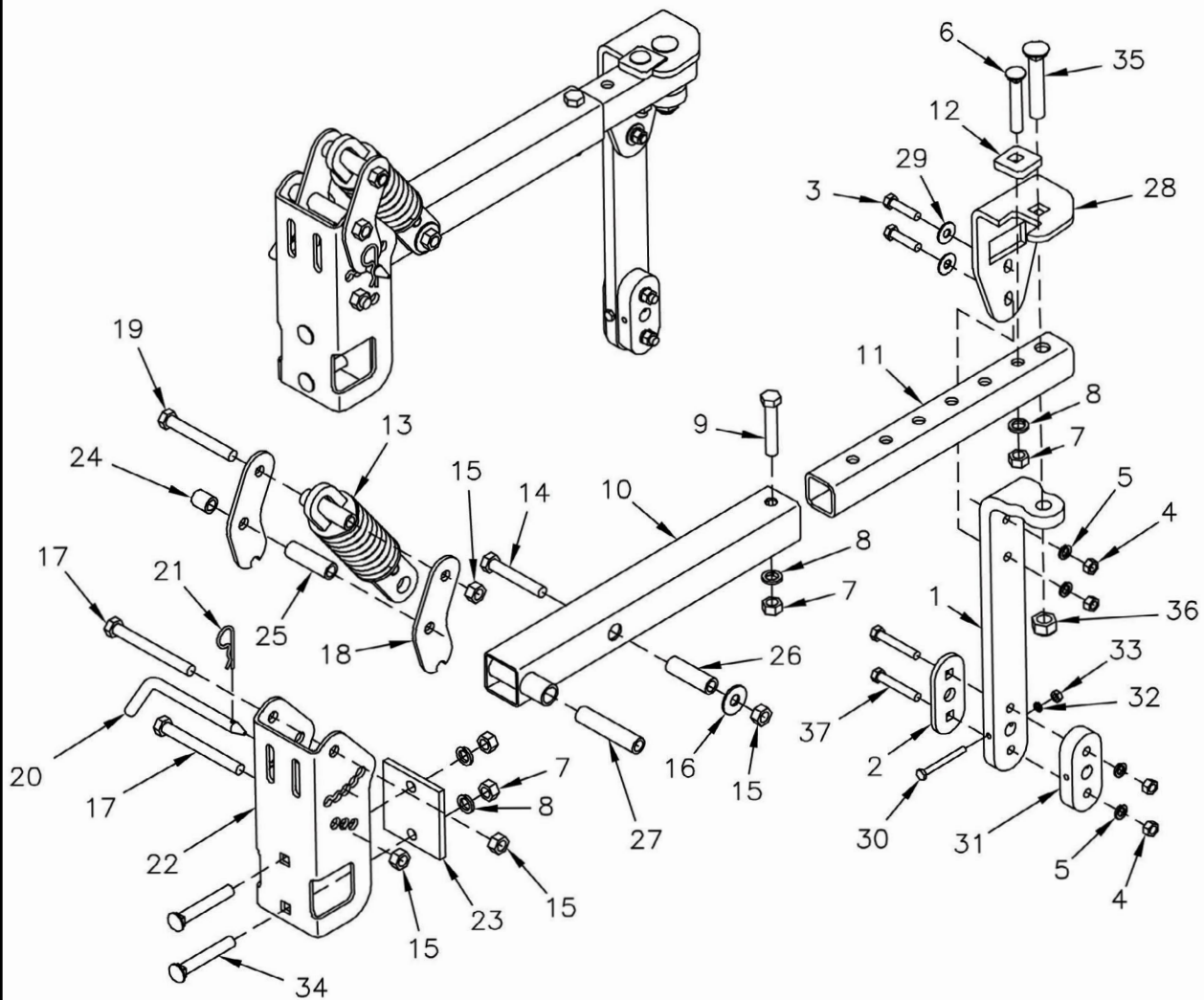
MOUNT KIT 24 R 20"

Please contact our service department about these parts.

DWG. NO. 7828

REF. NO.	PART NUMBER	DESCRIPTION	QTY.	REF. NO.	PART NUMBER	DESCRIPTION	QTY.
1			1	5			1
2			1	6			1
3			1	7			1
4			3				

RH ARM ASSEMBLY

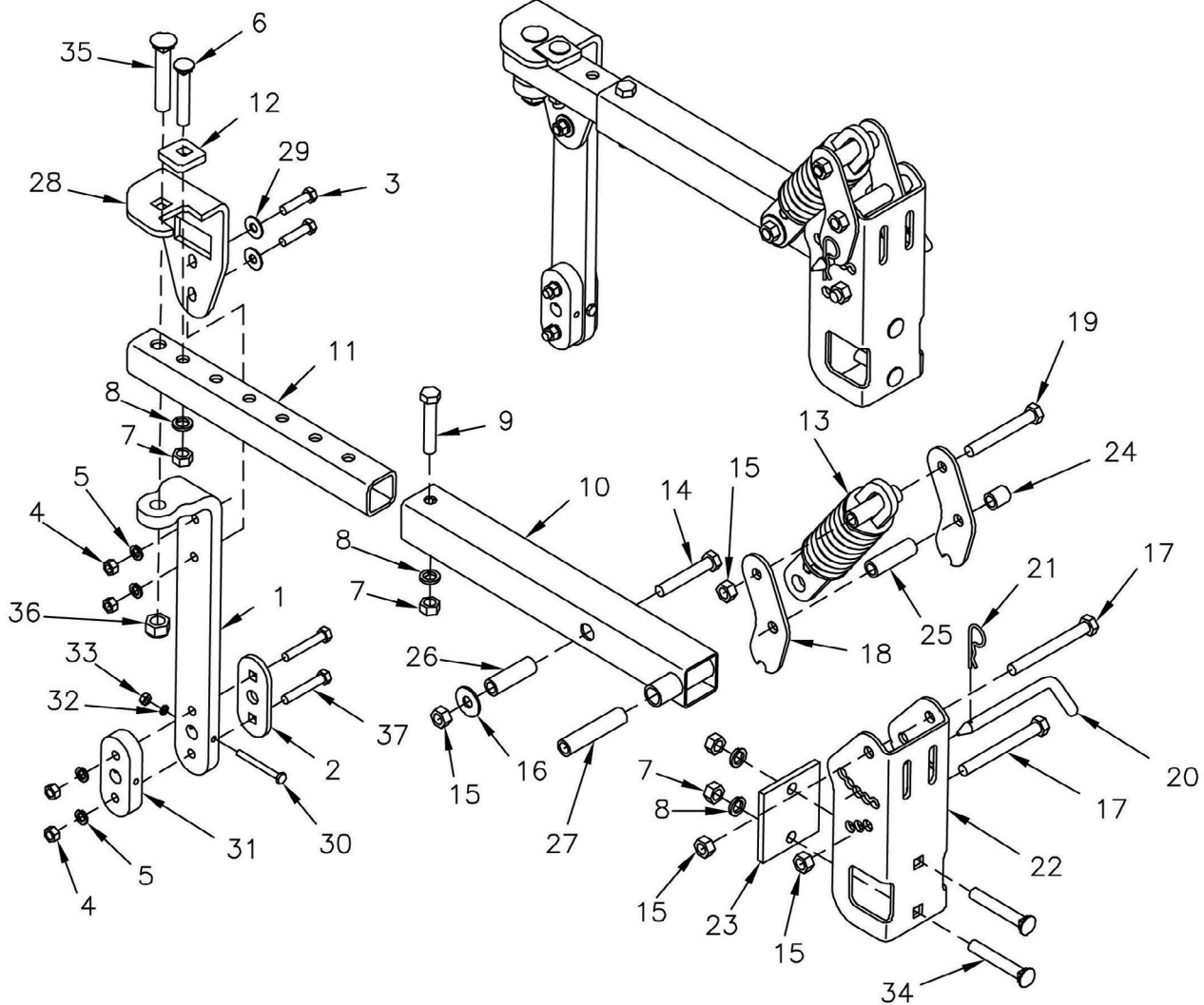


DWG. NO. 7830

REF. NO.	PART NUMBER	DESCRIPTION	QTY.	REF. NO.	PART NUMBER	DESCRIPTION	QTY.
1	81007590	Wheel Arm	1	19	950-001-142	Hex Head Cap Screw 1/2-13 NC x 3 1/2 Gr. 5	1
2	81007591	Cutaway Mount	2	20	81007602	Pin	1
3	950-001-108	Hex Head Cap Screw 3/8-16 NC x 1 1/2 Gr. 5	2	21	953-005-001	Hair Cotter Pin .120 x 2 3/8	1
4	951-001-005	Hex Nut 3/8-16	4	22	81007603	Mount Channel	1
5	952-001-007	Lock Washer 3/8 Med Split SAE	4	23	81007604	Clamp Plate	1
6	030-16138	Carriage Bolt 1/2-13 x 3 Gr. 5	1	24	81007605	Spacer	1
7	951-001-007	Hex Nut 1/2-13	4	25	81007606	Spacer Long	1
8	952-001-004	Lock Washer 1/2 Med Split SAE	4	26	81007607	Pivot Bushing	1
9	950-001-135	Hex Head Cap Screw 1/2-13 NC x 2 3/4 Gr. 5	1	27	81007608	Pivot Spacer	1
10	81007592	Shield Tube Weld	1	28	81007609	LH Shield Adjustment Plate	1
11	81007595	Shield Rear Tube	1	29	952-002-003	Flat Washer 3/8 WRT	2
12	81007576	Cutaway Adjustment Plate	1	30	031-06012	Hex Head Cap Screw 1/4-20 NC x 2 1/2 Gr. 5	1
13	81007597	Spring Assembly	1	31	030-16071	Carriage Bolt 3/8-16 x 1 3/4 Gr. 5	2
14	950-001-075	Hex Head Cap Screw 1/2-13 NC x 3 Gr. 5	1	32	952-001-001	Lock Washer 1/4 Med Split SAE	1
15	10304	Lock Nut 1/2-13 UNC	4	33	951-001-003	Hex Nut 1/4-20	1
16	952-002-005	Flat Washer 1/2 WRT	1	34	030-16139	Carriage Bolt 1/2-13 x 3 1/4 Gr. 5	2
17	950-001-126	Hex Head Cap Screw 1/2-13 UNC x 4 1/2 Gr. 5	2	35	950-003-035	Carriage Bolt 5/8-11 x 3 1/2 Gr. 5	1
18	81007601	Adjustment Plate Top	2	36	951-005-044	Lock Nut 5/8-11 2-Way	1
				37	031-06110	Hex head cap screw 3/8-16 x 2 1/4 GR. 5	2

CULTI-PRO MODEL 6501 & 6521

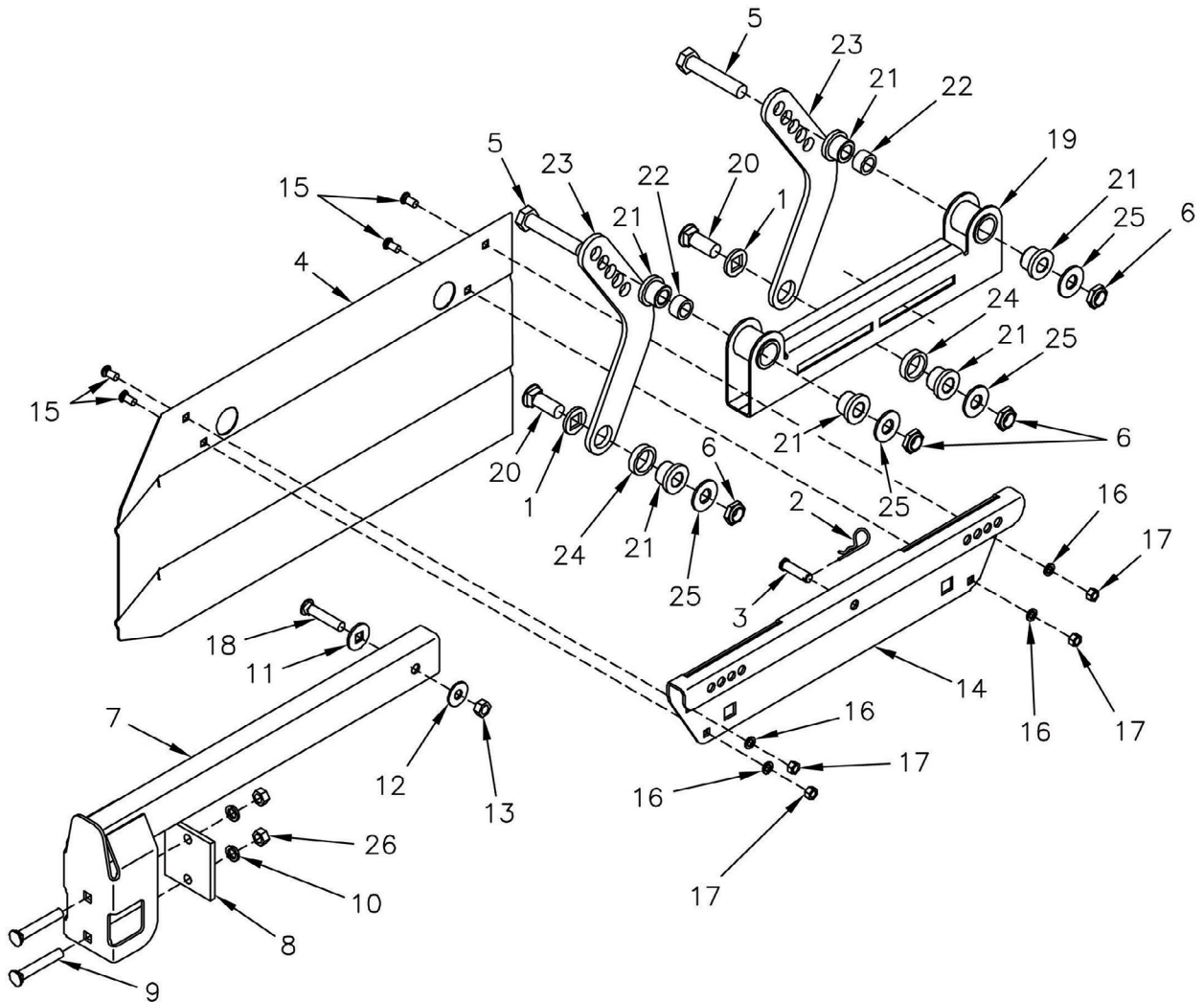
LH ARM ASSEMBLY



DWG. NO. 7831

REF. NO.	PART NUMBER	DESCRIPTION	QTY.	REF. NO.	PART NUMBER	DESCRIPTION	QTY.
1	81007590	WHEEL ARM	1	22	81007603	MOUNT CHANNEL	1
2	81007591	CUTAWAY MOUNT	1	23	81007604	CLAMP PLATE	1
3	950-001-108	HEX HEAD CAP SCREW 3/8-16 NC X 1 1/2 GR. 5 PLT	2	24	81007605	SPACER	1
4	951-001-005	NEX NUT 3/8-16	4	25	81007606	SPACER LONG	1
5	952-001-007	LOCK WASHER 3/8 MED SPLIT SAE	4	26	81007607	PIVOT BUSHING	1
6	030-16138	CARRIAGE BOLT 1/2-13 X 3 GR. 5	1	27	81007608	PIVOT SPACER	1
7	951-001-007	HEX NUT 1/2-13	4	28	81007695	LH SHIELD ADJUSTMENT PLATE	1
8	952-001-004	LOCK WASHER 1/2 MED SPLIT SAE	4	29	952-002-003	FLAT WASHER 3/8 WRT	2
9	950-001-135	HEX HEAD CAP SCREW 1/2-13 NC X 2 3/4 GR. 5 PLT	1	30	031-06012	5 PLT	1
10	81007592	SHIELD TUBE WELD	1	31	81007694	CUTAWAY MOUNT BLOCK 3/4 THK	1
11	81007595	SHIELD REAR TUBE	1	32	952-001-001	LOCK WASHER 1/4 MED SPLIT SAE	1
12	81007576	CUTAWAY ADJUSTMENT PLATE	1	33	951-001-003	HEX NUT 1/4-20	1
13	81007597	SPRING ASSEMBLY	1	34	030-16139	CARRIAGE BOLT 1/2-13 X 3 1/4 GR. 5 PLT	2
14	950-001-075	HEX HEAD CAP SCREW 1/2-13 NC X 3 GR. 5 PLT	1	35	950-003-035	CARRIAGE BOLT 5/8-11 X 3 1/2 GR. 5	1
15	10304	LOCK NUT 1/2-13 UNC	4	36	060756	LOCK NUT 5/8-11 UNC NYLON INSERT	1
16	952-002-005	FLAT WASHER 1/2 WRT	1	37	031-06110	HEX HEAD CAP SCREW 3/8-16 X 2 1/4 GR. 5	2
17	950-001-126	HEX HEAD CAP SCREW 1/2-13 UNC X 4 1/2 GR. 5	2				
18	81007601	ADJUSTMENT PLATE TOP	2				
19	950-001-142	HEX HEAD CAP SCREW 1/2-13 NC X 3 1/2 GR. 5 PLT	1				
20	81007602	CUTAWAY MOUNT BLOCK 3/4 THK	1				
21	953-005-001	HAIR PIN COTTER .120 X 2 3/8	1				

RH OPEN TOP SHIELD ASSEMBLY

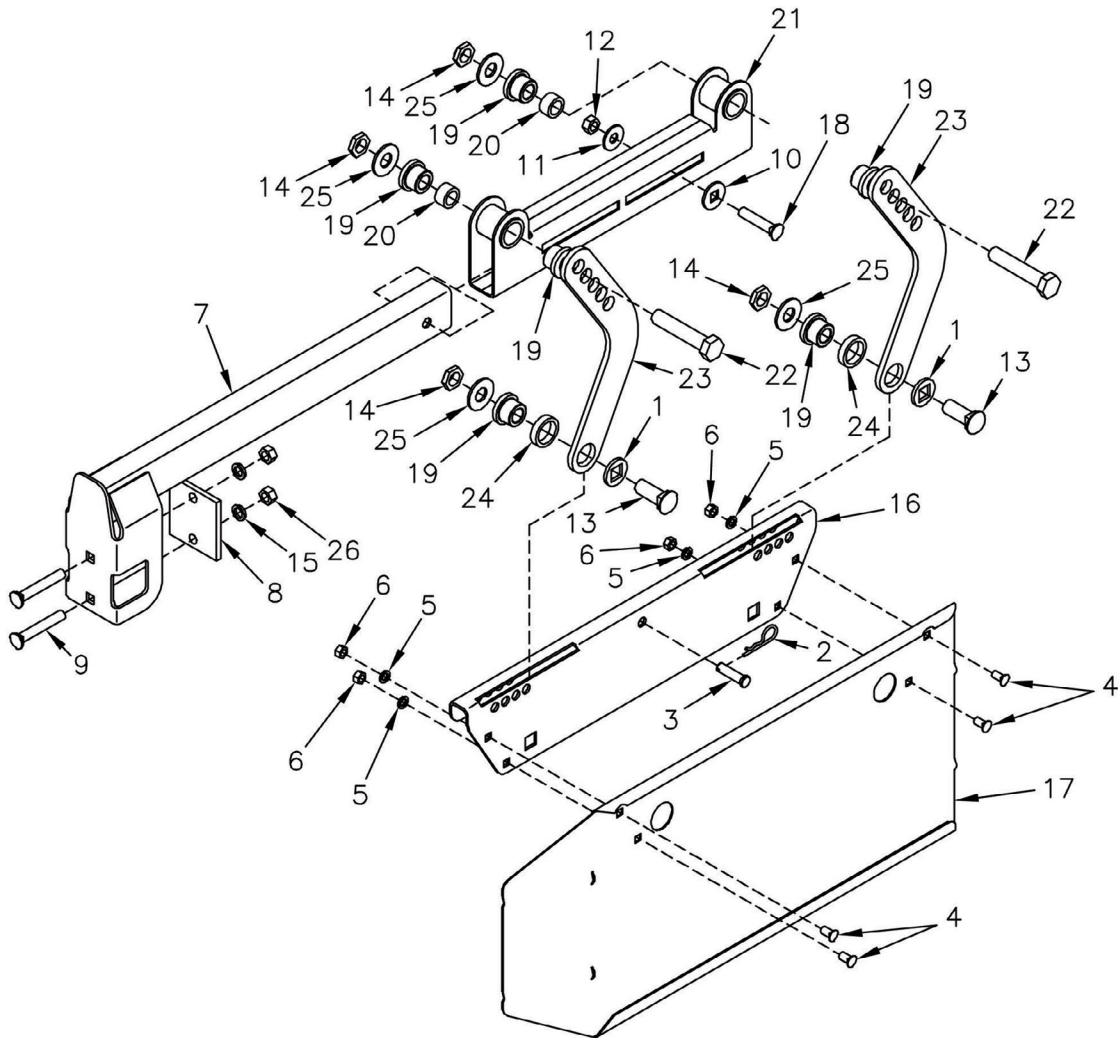


DWG. NO. 7833

REF. NO.	PART NUMBER	DESCRIPTION	QTY.	REF. NO.	PART NUMBER	DESCRIPTION	QTY.
1	81007216	SHIELD WASHER	2	14	81007394	Shield Mount	1
2	953-005-001	HAIR PIN COTTER .120 X 2 3/8	1	15	030-16067	Carriage Bolt 3/8-16 x 3/4 Gr. 5 PLT	4
3	81004499	CLEVIS PIN	1	16	952-001-007	Lock Washer 3/8 Med Split SAE	4
4	81007397	RH SHIELD	1	17	951-001-005	Hex Nut 3/8-16	4
5	950-001-244	HEX HEAD CAP SCREW 3/4-10 NC X 4 GR. 5 PLT	2	18	030-16136	Carriage Bolt 1/2-13 x 2 1/2 Gr. 5	1
6	951-003-019	3/4-10 UNC NYLOCK NUT THIN	4	19	81007232	Adjustment Channel Weld	1
7	81007616	OPEN TOP MOUNT WELD	1	20	950-003-056	Carriage Bolt 3/4-10 x 2 Gr. 5	2
8	81007604	CLAMP PLATE	1	21	81004019	Flange Bearing	6
9	030-16139	CARRIAGE BOLT 1/2-13 UNC X 3 1/4 GR. 5	2	22	81007434	Spacer Sleeve	2
10	950-001-004	LOCK WASHER 1/2	2	23	81007226	Dog Leg	2
11	81007236	WASHER 17/32 SQ HOLE	1	24	81007433	Spacer	2
12	952-002-005	FLAT WASHER 1/2 WRT	1	25	033-12013	Flat Washer 3/4 SAE PLT	4
13	10304	LOCK NUT 1/2-13 UNC	1	26	951-001-007	Hex Nut 1/2-13 UNC	2

CULTI-PRO MODEL 6501 & 6521

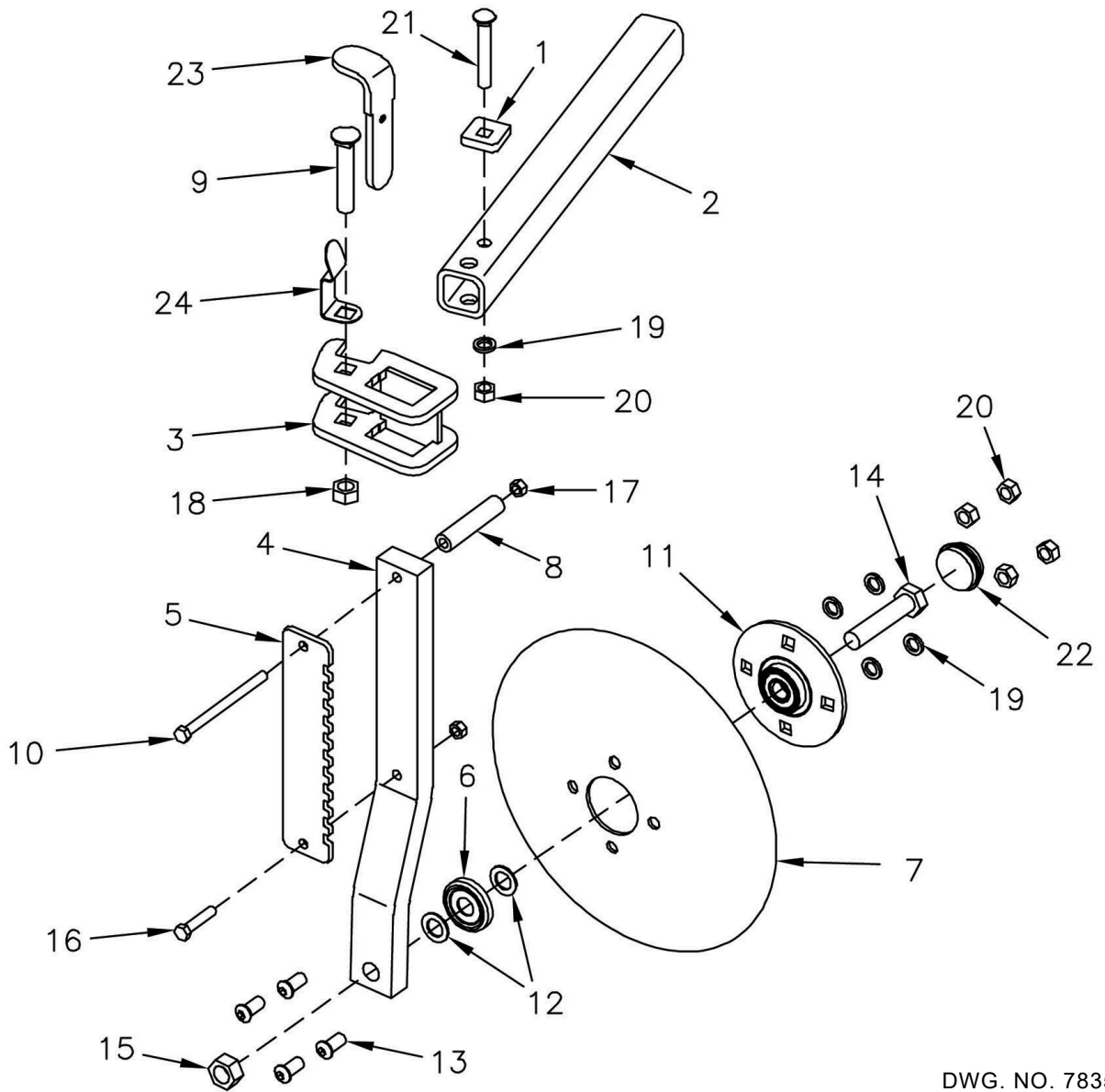
LH OPEN TOP SHIELD ASSEMBLY



DWG. NO. 7834

REF. NO.	PART NUMBER	DESCRIPTION	QTY.	REF. NO.	PART NUMBER	DESCRIPTION	QTY.
1	81007216	Shield Washer	2	14	81007394	Shield mount	1
2	953-005-001	Hair Pin Cotter .120 x 2 3/8	1	15	030-16067	Carriage bolt 3/8-16 x 3/4 GR 5 PLT	4
3	81004499	Clevis Pin	1	16	952-001-007	Lock Washer 3/8 med slit SAE	4
4	81007398	LH Shield	1	17	951-001-005	Hex nut 3/8-16	4
5	950-001-244	Hex Head Cap Screw 3/4-10 N?C x 4 GR. 5 PLT	2	18	030-16136	Carriage Bolt 1/2-13 x 2 1/2 Gr. 5	1
6	951-003-019	3/4-10 UNC Nylock Nut thin	4	19	91007232	Adjustment channel weld	1
7	81007616	Open Top Mount Weld	1	20	950-003-056	Carriage bolt 3/4-10 x 2 GR. 5	2
8	81007604	Clamp Plate	1	21	81004019	Flange bearing	6
9	030-16139	Carriage Bolt 1/2-13 UNC x 3 1/4 Gr. 5	2	22	81007434	Spacer sleeve	2
10	950-001-004	Lock washer 1/2	1	23	81007226	Dog Leg	2
11	81007236	Washer 17/32 sq hole	1	24	81007433	Spacer	2
12	952-002-005	Flat Washer 1/2 WRT	1	25	033-12013	Flat Washer 3/4 SAE PLT	4
13	10304	Lock nut 1/2-13 UNC	1	26	951-001-007	Hex Nut 1/2-13 UNC	2

RH CUTAWAY ASSEMBLY

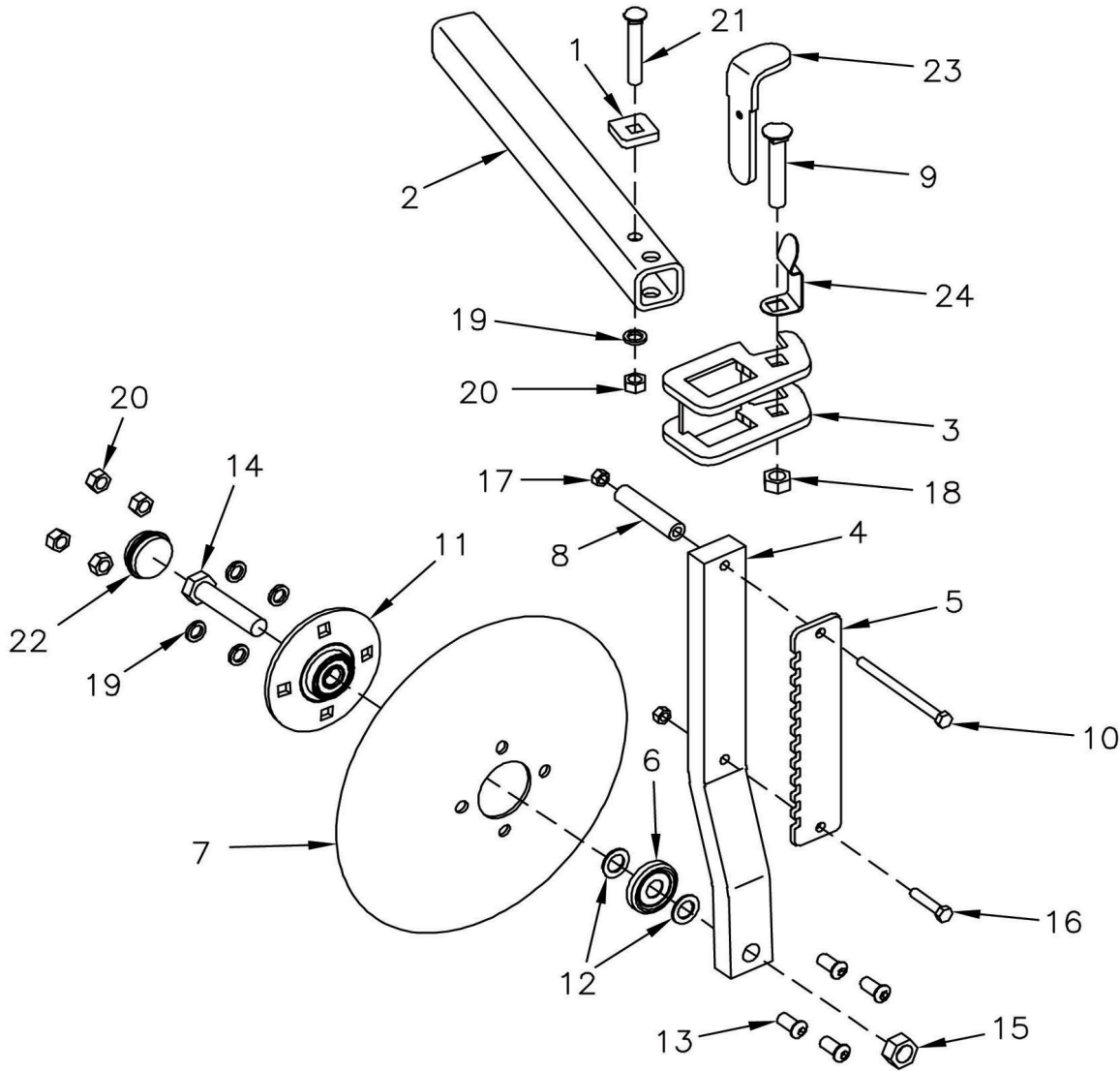


DWG. NO. 7835

REF. NO.	PART NUMBER	DESCRIPTION	QTY.	REF. NO.	PART NUMBER	DESCRIPTION	QTY.
1	81007576	Cutaway Adjustment Plate	1	13	950-004-007	Socket Head Cap Screw 1/2-13 UNC x 1 1/4 Gr. 5	4
2	81007698	CUTAWAY TUBE 20"-22"	1	14	950-001-174	Hex Head Cap Screw 3/4-10 UNC x 3 1/2 Gr. 5	1
	81007697	CUTAWAY TUBE 30"	1	15	951-005-037	Lock Nut 3/4-10 UNC 2-Way	1
	81007577	CUTAWAY TUBE 36"-38"	1	16	950-001-092	Hex Head Cap Screw 3/8-16 UNC x 1 3/4 Gr. 5	1
3	81007578	Cutaway Mount Weld	1	17	951-005-051	Lock Nut 3/8-16 UNC 2-Way	1
4	81007579	Cutaway Shank	1	18	951-005-044	Lock Nut 5/8-11 UNC 2-Way	1
5	81007580	Notched Plate	1	19	952-001-004	Lock Washer 1/2	5
6	81004802	Dust Cap	1	20	951-001-007	Hex Nut 1/2-13 UNC	5
7	805-001-002	Concave Disc	1	21	030-16139	Carriage Bolt 1/2-13 UNC x 3 1/4 Gr. 5	1
8	81007581	Cutaway Tube Handle	1	22	805-001-476	Hub Cap	1
9	950-003-035	Carriage Bolt 5/8-11 UNC x 3 1/2 Gr. 5	1	23	81007582	Lock Strap Assy	1
10	950-001-209	Hex Head Cap Screw 3/8-16 UNC x 5 Gr. 5	1	24	81007644	Spring Clip	1
11	81004620	Hub Assembly	1				
12	952-004-003	Machine Bushing .765 ID x 1 1/4 OD x .75 THK	2				

CULTI-PRO MODEL 6501 & 6521

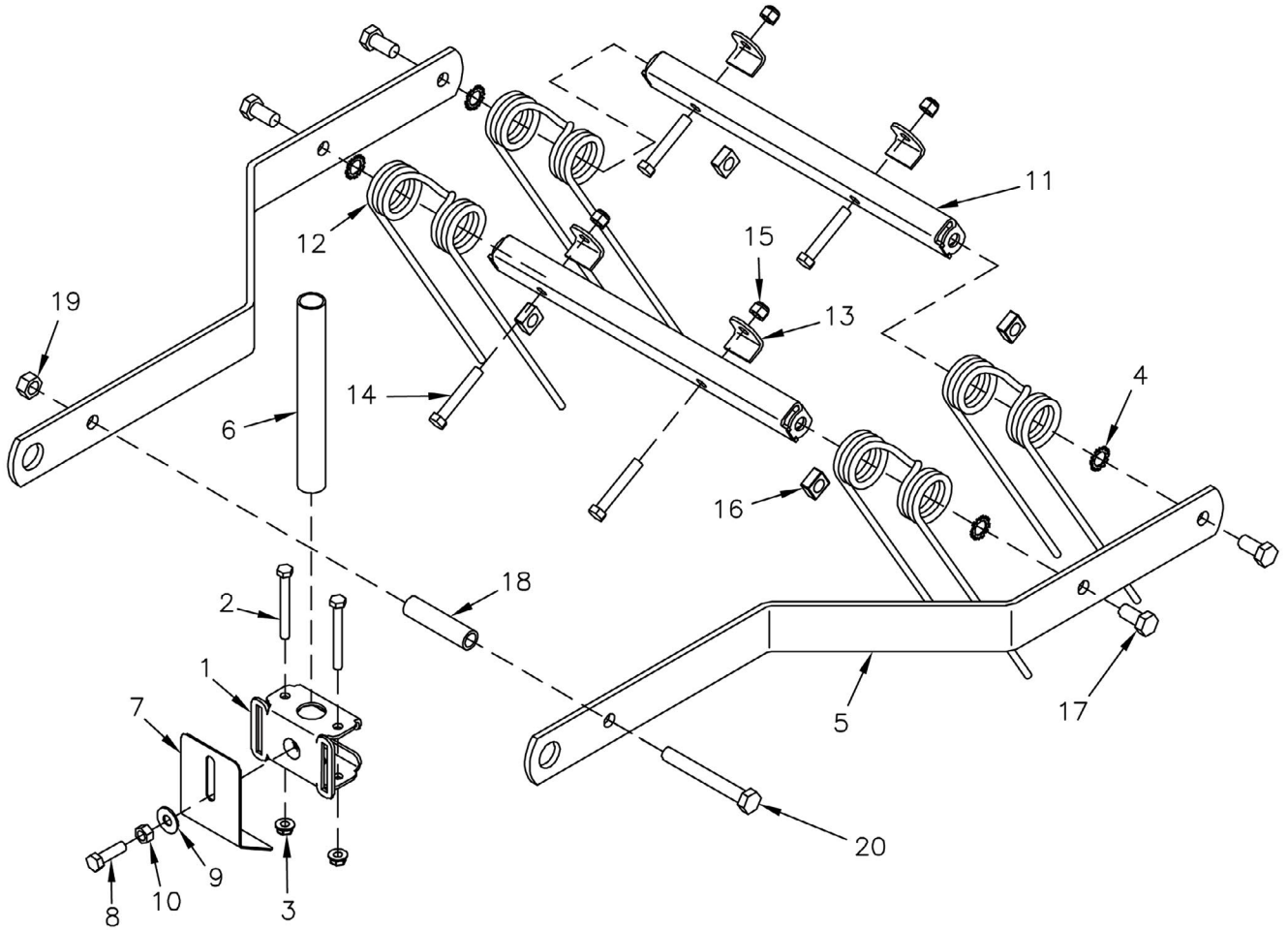
LH CUTAWAY ASSEMBLY



DWG. NO. 7836

REF. NO.	PART NUMBER	DESCRIPTION	QTY.	REF. NO.	PART NUMBER	DESCRIPTION	QTY.
1	81007576	Cutaway Adjustment Plate	1	13	950-004-007	Socket Head Cap Screw 1/2-13 UNC x 1 1/4 Gr. 5	4
2	81007577	Cutaway Tube	1	14	950-001-174	Hex Head Cap Screw 3/4-10 UNC x 3 1/2 Gr. 5	1
3	81007578	Cutaway Mount Weld	1	15	951-005-037	Lock Nut 3/4-10 UNC 2-Way	1
4	81007579	Cutaway Shank	1	16	950-001-092	Hex Head Cap Screw 3/8-16 UNC x 1 3/4 Gr. 5	1
5	81007580	Notched Plate	1	17	951-005-051	Lock Nut 3/8-16 UNC 2-Way	1
6	81004802	Dust Cap	1	18	951-005-044	Lock Nut 5/8-11 UNC 2-Way	1
7	805-001-002	Concave Disc	1	19	952-001-004	Lock Washer 1/2	5
8	81007581	Cutaway Tube Handle	1	20	951-001-007	Hex Nut 1/2-13 UNC	5
9	950-003-035	Carriage Bolt 5/8-11 UNC x 3 1/2 Gr. 5	1	21	030-16139	Carriage Bolt 1/2-13 UNC x 3 1/4 Gr. 5	1
10	950-001-209	Hex Head Cap Screw 3/8-16 UNC x 5 Gr. 5	1	22	805-001-476	Hub Cap	1
11	81004620	Hub Assembly	1	23	81007582	Lock Strap Assy	1
12	952-004-003	Machine Bushing .765 ID x 1 1/4 OD x .75 THK	2	24	81007644	Spring Clip	1

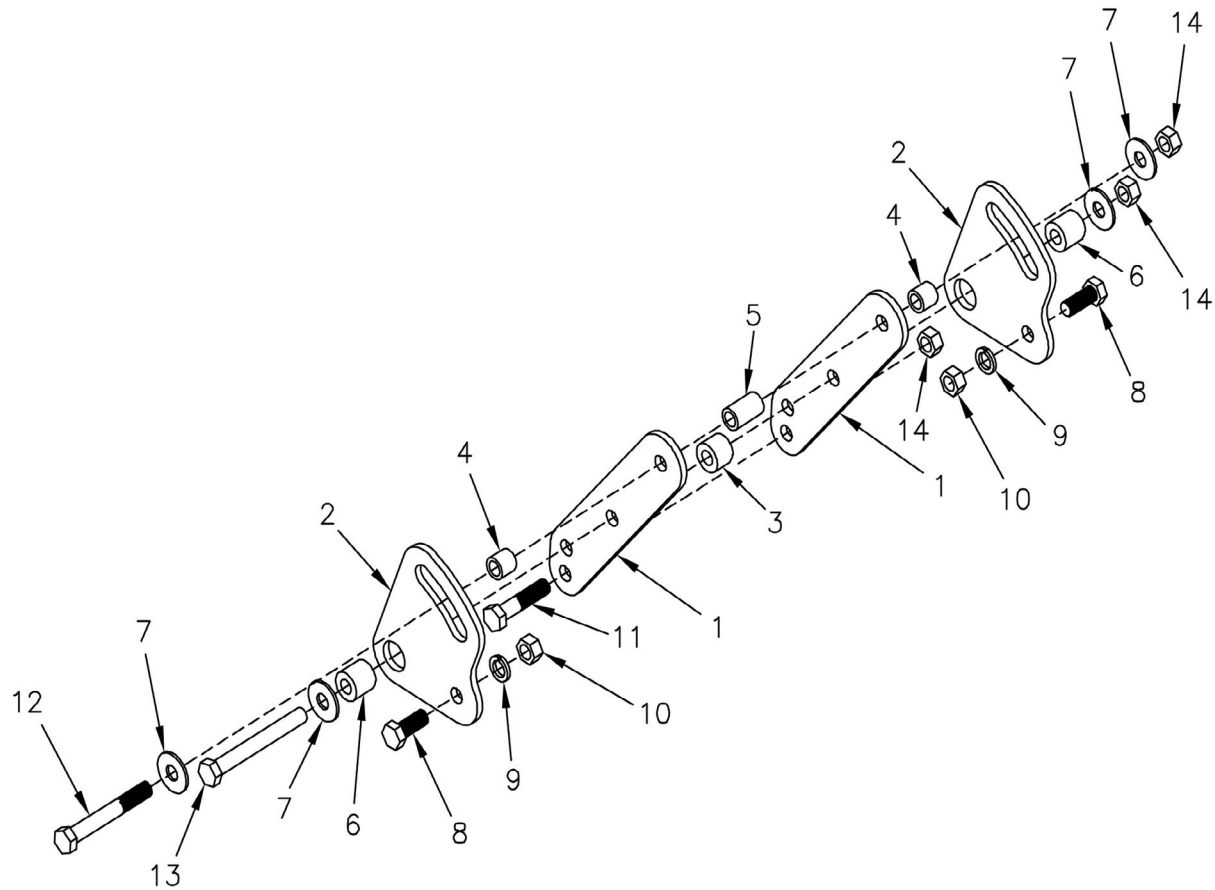
HARROW MOUNT ASSEMBLY



DWG. NO. 7806

REF. NO.	PART NUMBER	DESCRIPTION	QTY.	REF. NO.	PART NUMBER	DESCRIPTION	QTY.
1	81007142	Seed Tube Mount	1	11	951-001-005	Harrow Tine Channel	2
2	031-06062	Hex Head Cap Screw 5/16-18 NC x 2 3/4 Gr. 5	2	12	81007146	Harrow Tine 1 1/2 ID	4
3	951-002-002	Flanged Whiz Lock Nut 5/16-18	2	13	81007148	Harrow Tine Cup	4
4	033-33013	External Star Lock Washer 1/2	4	14	031-06110	Hex Head Cap Screw 3/8-16 NC x 2 1/4 Gr. 5	4
5	81007143	Harrow Strap	2	15	951-003-002	Nut Nylon Insert 3/8-16	4
6	81007144	Seed Tube	1	16	034-12005	Square Nut 1/2 UNC PLT	4
7	81007145	Seed Deflector	1	17	950-001-231	Hex Head Cap Screw 1/2-13 NC x 1" Gr. 5	4
8	950-001-106	Hex Head Cap Screw 3/8-16 NC x 1 1/4 Gr. 5	1	18	81007629	Shipping Spacer	1
9	952-002-003	Flat Washer 3/8 WRT	1	19	951-001-007	Hex Nut 1/2-13	1
10	951-001-005	Hex Nut 3/8-16	1	20	950-001-124	Hex Head Cap Screw 1/2-13 NC x 4 Gr. 5	1

HARROW MOUNT ASSEMBLY



DWG. NO. 7807

REF. NO.	PART NUMBER	DESCRIPTION	QTY.	REF. NO.	PART NUMBER	DESCRIPTION	QTY.
1	81007623	Harrow Mount Plate	2	8	950-001-111	Hex Head Cap Screw 1/2-13 NC x 1 1/4 Gr. 5	2
2	81007624	Harrow Pivot Plate	2	9	952-001-004	Lock Washer 1/2 Med Split SAE	2
3	81007625	Inner Bushing	1	10	951-001-007	Hex Nut 1/2-13	2
4	81007626	Stop Bushing	2	11	031-06208	Hex Head Cap Screw 1/2-13 NC x 2 1/4 Gr. 5	1
5	81007627	Harrow Bushing	1	12	031-06214	Hex Head Cap Screw 1/2-13 NC x 3 3/4 Gr. 5	1
6	81007628	Outer Bushing	2	13	950-001-301	Hex Head Cap Screw 1/2-13 NC x 4 1/4 Gr. 5	1
7	952-002-005	Flat Washer 1/2 WRT	2	14	10304	Lock Nut 1/2-13 UNC	3